

Christmas program set for next week

LANCASTER, Pa. - The Lancaster County Cooperative Extension Service of Penn State University will hold its Annual Christmas Program on November 8 at the Farm and Home Center, 1383 Arcadia Road. All interested individuals are invited to attend. The schedule of activities for the day are as follows:

9:30 a.m. - "Craft and Gift Ideas For The Holidays" - A demonstration on how to use your sewing machine to

make holiday crafts and gifts. The program will be presented by the Extension home economists.

10:30 a.m. - "Let's Have A Holiday Party" - A demonstration of food ideas for the holiday season will be presented by Susan L. Doyle (former Metropolitan Edison home economist and Extension nutrition assistant). Food prepared will be given as door prizes.

10:00 a.m. to 4:00 p.m. - Viewing of exhibits and bazaar tables prepared by the Farm Women Societies.

1:30 p.m. - "Creative Decorating For The Holidays" - a presentation on making creative holiday decorations for the home using fresh flowers and greens. The program will be given by Mrs. George C. Makin, III, who is a noted lecturer and flower show judge.

There is no need to preregister. Mark your calendars and plan to attend. A donation of \$1 per person attending will be requested to cover expenses.

Women's Calendar

- Saturday, November 6**
Lancaster County Farm Women Society Convention at the Farm and Home Center, Lancaster.
- Tuesday, November 9**
Dauphin County Society 1 meeting at home of Daisy Cassel. 7:30 p.m.
- Wednesday, November 10**
Lancaster County Society 14 meeting at Bird-in-Hand Restaurant. 6:30 p.m. Mark Martin, speaker.
- Thursday, November 11**
Lancaster County Society 9 meeting at 12:30 p.m.
- Friday, November 12**
Lancaster County Society 13 meeting at 7:30 p.m. Book review program.
- Saturday, November 13**
Lancaster County Society 19 meeting. 1:30 p.m. Faye Stoner speaking.
- Lancaster County Society 1**
meeting. 1:30 p.m. Book review.
- Lancaster County Society 7**
meeting at 2 p.m.
- Lancaster County Society 25**
meeting 1:30 p.m. Helen Metz, hostess; Jane King, speaker.
- Lancaster County Society 6**
meeting at 2 p.m.

Combine elegance with traditional Thanksgiving meal

UNIVERSITY PARK, Pa. - Families observe Thanksgiving in different ways. For some, it means sharing a bounty of good food with lots of friends and relatives in a simple, casual way. For others it means elegance with food served from a table set with the finest china, glassware and linen. The same warm feelings toward others can prevail, regardless of the situation.

If the group isn't too large maybe this is the year for elegance. Set the table with fine china, glassware and flatware. Dress up the table with an attractive centerpiece and place cards children can make.

Serve the meal with elegance, too. Serve appetizers in the living room first. Then move to the dining room for the main course. Pass bowls of food around the table country style. Or use compromise service where meats and vegetables are served onto dinner plates by the host or hostess from bowls and platters. The food is served from the place where the host or hostess sits and filled plates are passed from hand to hand until all have been served.

Don't forget that children are an important part of tradition. Let them in on the elegance of dining, too. They need to learn to feel comfortable about elegant dining. And they'll like the opportunity to help in the serving of the food, too.



- Lancaster County Society 32 meeting. 25th Anniversary banquet.
- Lancaster County Society 2 meeting. 1:30 p.m. Bring pumpkin product to sell.

AGWAY

12TH ANNIVERSARY ANNUAL MEETING

AGWAY INC.
GARDEN SPOT ZONE

MONDAY EVENING,
NOVEMBER 15, 1976

7:30 P.M. FARM & HOME CENTER, LANCASTER, PA.

PROGRAM

- Reports by Agway Management -
Mr. Mark Hess - Garden Spot Stores
Mr. Elwin Peet - Petroleum Manager
Mr. James Esbenshade - Supply Center
- Election of Committeemen
- Vocal Music by Kay Weaver
- Guest Speaker - Arthur Cochran, Area Manager, Agway Inc.

---- 30 DOOR PRIZES & REFRESHMENTS ----

Hunting calendar

November 7 - General trapping season opens, 7 a.m.

November 9 - Dove, rail, gallinule season closes.

November 11 - Snow and blue geese season closes.

November 20 - Turkey season closes, eastern and western Pennsylvania.

November 20 - Duck, sea duck, coot, merganser season closes.

November 22 - One-day bear season, turkeys closed.

November 23 - Turkey season reopens, central Pennsylvania.

November 25 - Mink and

TRY A CLASSIFIED AD!

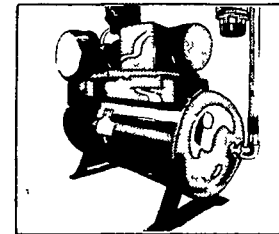
muskrat trapping season reopens.

November 27 - Small game season closes.

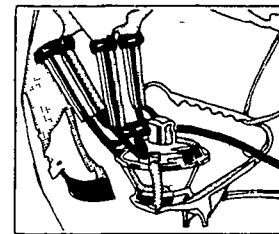
November 29 - Antlered deer season opens.

There are a lot of reasons you should buy a Surge pipeline.

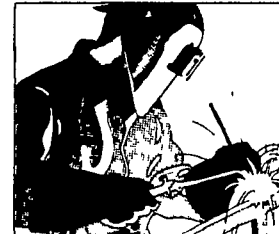
Planning to stick with stanchions, but want to eliminate bucket backache? Save time and labor by moving up to a Surge Stanchion Pipeline



• Famous Alamo Vacuum Pump
A big dependable pump with important design differences. Features flood-type lubrication, filtered air intake, a large oil reserve, plus many more efficiency advantages.



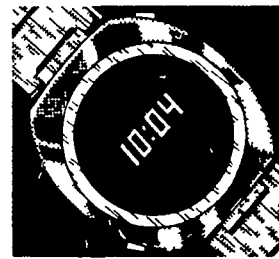
• Tug & Pull Milking Action
One of the most important features of a Surge pipeline is famous "tug & pull" milking, the milking action that's helping thousands of dairymen get the best their cows can produce. All Surge milkers offer large capacity visible milk flow, plus a special design feature that prevents the backwashing of milk from one quarter to another, greatly reducing the spread of mastitis.



• Rugged, welded stainless construction makes the Surge Pipeline vacuum tight and easy to clean. It's more economical to install and maintain, too.

When you add to these features self-adjusting milk valves, the compactness and efficiency of the Surge Pacemaker's receiver panel, and dependable service from the best trained dealers in the industry, you'll see why so many stanchion operators have chosen Surge.

A free \$100 watch is one more.



Place your pipeline order before Dec. 31, 1976 and receive a handsome digital watch valued at \$100 absolutely free!

SURGE We make your cows worth more.

Longacre Electrical Svc. Inc.
Bally, PA
Phone (215) 845-2261

Glenn E. Hurst
RD2, East Earl, PA
Ph. (215) 445-6865

H. Daniel Wenger & Bro. Inc.
RD1, Hamburg, PA
Phone (215) 488-6574

Pen. W. Hostetter
RD2, Annville, PA
Ph: (717) 867-2896

Jim's Sales & Service
Oak Bottom RD Box 37
Quarryville, PA
Phone (717) 786-1533

Lester B. Boll
RD1, Lititz, PA
Ph. (717) 626-6198



Brandt's Farm Supply, Inc.
601 E. High St
Elizabethtown, PA
Ph. (717) 367-1221