

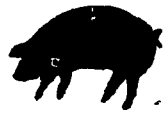
## Hog Markets

### Lancaster Market

Monday, Nov. 1, 1976  
HOGS: Barrows and gilts 1.00-1.50 lower than last Wednesday.  
BARROWS AND GILTS: Few head US 1 205-235 lb. 36.25-36.50; US 1-2 200-240 lb. 34.60-35.50; US 2-3 200-240 lb. 33.85-34.25, 245-270 lb. 31.85-32.50.

### Lancaster Auction

Wednesday, Nov. 3, 1976  
HOGS: Barrows and gilts 1.00-1.25 higher.  
BARROWS AND GILTS: us 1-2 200-240 lb. 35.75-36.35, Few head US 1 37.25 US 2-3 200-240 lb. 34.75-35.75, 240-255 lb. 34.25-34.75, 255-275 lb. 32.25-34.25.



### GREEN DRAGON LIVESTOCK SALES

1 mile North of Ephrata, PA

#### SALE EVERY FRIDAY

Bulls, Steers, Slaughter Cows, Lambs and veal calves.

11:00 A.M. - Beef Sale Stockers & Feeders 200 to 250 each week.

12:30 P.M. - Dairy Cows  
7:00 P.M. - Small Animal Sale

We will have consignments from Alfred Albright, Bob Kennedy, Ray Keiper, Kelly Bowser, and Dale Brewer.

Bring a Load and Buy a Load.  
For Special Sales and Herd Dispersals on the farm or at our barn or other market information call: Office 717-733-2444.

Walter H. Risser, Proprietor

### Vintage

Vintage Sales Stables  
Saturday, October 30  
No. 1 34.85 - 35.35; No. 2 34.25 - 34.75; No. 3 33.60 - 34.10; Heavyweights 250 - 260 lbs. 32.00 - 34.25; Lightweight 150 - 180 lbs. 22.00 - 31.25; Sows 300 - 500 lbs. 23.50 - 28.75; Boars 200 - 240 lbs. 20.50 - 22.50.

Wednesday, Nov. 3, 1976

612 Head.  
No. 1 35.75-36.00; No. 2 35.00-35.60; No. 3 34.10-34.75; Heavy Hogs 250-280 31.50-35.60; Light Hogs 160-180 30.00; Sows 350-500 22.50-24.50; Boars 22.50-23.75.

### New Holland

New Holland Sales Stables  
HOGS: 1412  
Retail 34.00 - 35.00  
Heavyweight 31.50 - 33.00  
Lightweight 30.50 - 33.00  
Wholesale 33.00 - 34.00  
Sows 21.00 - 27.00  
Boars 20.00 - 25.00  
Shoats: 445

No. 1 and 2 37 - 51 lb. 49.00 - 56.00; No. 2 35 - 40 lbs. 47.00 - 53.50; 41 - 69 lbs. 45.00 - 50.00; No. 2 and 3 32 - 41 lbs. 42.00 - 47.00; 42 - 60 lbs. 42.00 - 47.00; No. 3 28 - 38 lbs. 43.00 - 45.00, 41 - 59 lbs. 42.00 - 45.00; Utility 32 - 39 lbs. 35.00 - 38.00.

### Indianapolis

Thursday Nov. 4, 1976  
INDIANAPOLIS HOGS: 1000

Barrows & gilts active, 50 to mostly 75 higher with full advance on weights under 240 lb. US 1-2 200-230 lb. 34.00-34.25, US 1-3 200-240 lb. 33.75-34.00, US 2-3 240-255 lb. 33.00-33.75.

### St. Louis

Thursday Nov. 4, 1976  
ST. LOUIS HOGS: 5500  
Barrows & gilts active, 50-1.00 higher, large share 75-1.00 higher. US 1-2 200-235 lb. 33.75 to mostly 34.00; about 100 head 34.10-34.25; US 1-3 200-240 lb. 33.25-33.75.

### Peoria Auction

Thursday, Nov. 4, 1976  
PEORIA HOGS: 3000  
Barrows & gilts fairly active, opening 50 higher. US 1-2 200-230 lb. 33.50-34.00; 35 head 34.25 US 1-3 200-240 lb. 33.00-33.50.

### New Holland Horse

New Holland Sales Stables  
New Holland, Pa.  
Monday, Nov. 1

Reported receipts of 494 horses, mules, and ponies. Market steady with last week's market.

Load of riding horses out of Tennessee 380 - 725; Load of driving horses out of Tennessee 550 - 1000.

Local work horses 380 - 660; mules 300 - 480; driving horses 175 - 350; riding horses 150 - 250; better riding horses 265 - 610; lightweight killers 15 - 18; heavyweight killers 22 - 24; mares 15 - 35; colts 10 - 20; geldings 15 - 35; and larger ponies 50 - 80.

Try A Classified Ad  
It Pays!

have a  
nice weekend...



## Futures Trading

Closing bids as of Thursday, Nov. 4

	Chicago Cattle	Chicago Hogs	New York Maine Potatoes	New York Fresh Eggs
November			5.01	
December	41.20	31.32		67.35
January				62.40
February	41.77	31.42		58.00
March			5.69	57.75
April	41.85	30.92	6.26	54.00
May			8.10	
June	43.87	34.00		
July		34.97		
Aug.	44.05	34.52		

Trend—Cattle are higher, Hogs are higher, Potatoes are lower, and Eggs are higher.

Markets Provided by Commodity Department  
Reynolds Securities, Inc.

## CHICAGO GRAIN FUTURES

(Closing bids as of Thursday, Nov. 4)

	Corn	Wheat	Soybeans	Soybean Meal
November			6.65	
December	2.53	2.74		186.20
January			6.71½	188.40
March	2.62	2.84¾	6.75½	190.50
May	2.67¾	2.90	6.75½	190.20
July	2.71¾	2.92¾	6.71	184.50
Aug.			6.66	187.00
Sept.	2.68	2.97½	6.34	179.10

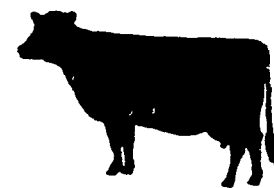
Trend—Corn is stronger, Wheat is stronger, Soybeans are higher, and Soybean Meal is higher.

Markets Provided by Commodity Department  
Reynolds Securities, Inc.

## U.S. Inspected Livestock Slaughter

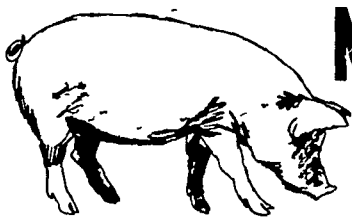
Estimated Daily Livestock Slaughter  
Under Federal Inspection

	CATTLE	HOGS	SHEEP
Week to Date	574,000	1,315,000	107,000
Same Period Last Week	559,000	1,199,000	50,000
Same Period Last Year	622,000	994,000	117,000



## ATTENTION CATTLE FEEDERS

Do you want to make buying your stockers and feeders easy. It can be very simple. Just call and give us your order. All orders filled to your exact specifications. Call us anytime. We can be very helpful.



## NEXT FEEDER PIG SALE TUESDAY, NOV. 9, 1 P.M.



Consign all your feeder pigs to Walter M. Dunlap & Sons  
where they will be handled by a capable and experienced staff.

Feeder pigs received from 6 A.M. to 11 A.M.

## WALTER M. DUNLAP & SONS

### LANCASTER STOCK YARDS

Consignors can get state tags at our office, thereby saving 25c marketing expense

For Further Information, Call 717-397-5136

## J. M. HOOBER INC.

As you know there are no easy ways to farm and to raise livestock. You work hard with your hands & back & you try to use all the knowledge your parents taught you, then you trust in the Lord.

Our business has no short cuts or easy ways either. We just work hard to supply you with quality feeder cattle & stand ready to assist you when your livestock is ready for market.

## NEXT FEEDER PIG SALE

NOVEMBER 9, 1976

Please Call Us Soon

PH (717) 397-6191, 569-2084, 626-5659