

FARMERS - DEALERS

TONS OF NEW BELTING - 1" TO 6' WIDE,
2 TO 8 PLY-ALL LENGTHS
SOLD SINGLY OR LARGE LOTS

1 LB. TO 1,000 LBS. \$1.00 per lb.
1,000 to 2,000 lbs. \$.75 per lb.
2,000 lbs. and up \$.50 per lb.

HARTZELL'S AUCTION GALLERY LOCATED
ON THE BANGOR-RICHMOND RD. JUST
OUTSIDE BANGOR BORO. CALL 215-588-5831
FOR FURTHER INFORMATION.
DON'T PASS UP THIS FINE OFFER.

MELVIN AND RAYMOND HARTZELL
AUCTIONEERS

Rough & Tumble holds banquet

BLUE BALL, Pa. - Approximately 270 members attended the 16th annual membership banquet held by the Rough and Tumble Engineer Historical Association at the Blue Ball Fire Hall last month.

The following officers were elected for 1976-77: President, Amos B. Stauffer; first vice president, Otis A. Astle; second vice president, Harry K. Frey, Jr.; secretary, Mrs. Patricia L. Frey; treasurer, Scott Lefever; chaplin, Paul M. Nolt; and curator, C. Daniel Brubaker, outgoing president.

The organization reduced the number of directors from

30 to 12. Elected were Lewis Frantz, Ira Hall, Walter Harris, Robert Hartzel, Raymond Herr, Sam Kreible, A. D. Mast, R. J. Montgomery, John Railing, Paul Seachrist, Paul Stoltzfus and Everett Young.

Daniel Brubaker, president for the past 12 years, was given a standing ovation as he left office, for "the fine work and improvements made to the museum during his reign."

He was named to the newly-created position of curator of the museum.

Ed Margerum, chairman of the by-laws committee, explained a new set of by-laws and amendments, the

first changes since the organization was founded some 30 years ago. The revised by-laws were adopted.

Margerum also gave a report on the success of the Bicentennial program held in July, in which the museum hosted the wagon train on its way to Valley Forge. More

than 3,000 people attended the programs, which included 56 covered wagons. Everett Young, chairman of the nominating committee, had charge of the election.

Amos Stauffer, incoming president reported on tractor pulls held during the year on the museum grounds.

JESUS HEALS THE BLIND



And when Jesus departed thence, two blind men followed him, crying, and saying, Thou son of David, have mercy on us

And when he was come into the house, the blind men came to him and Jesus saith unto them, Believe ye that I am able to do this? They said unto him, Yea, Lord

Then touched he their eyes, saying, According to your faith be it unto you

And their eyes were opened, and Jesus straightly charged them, saying, See that no man know it

St Matthew 9 27-30

Know Where the Activities Will Be?
Read the Farm Women Calendar.

GET THE WHOLE FAMILY INVOLVED

CONSIDER A

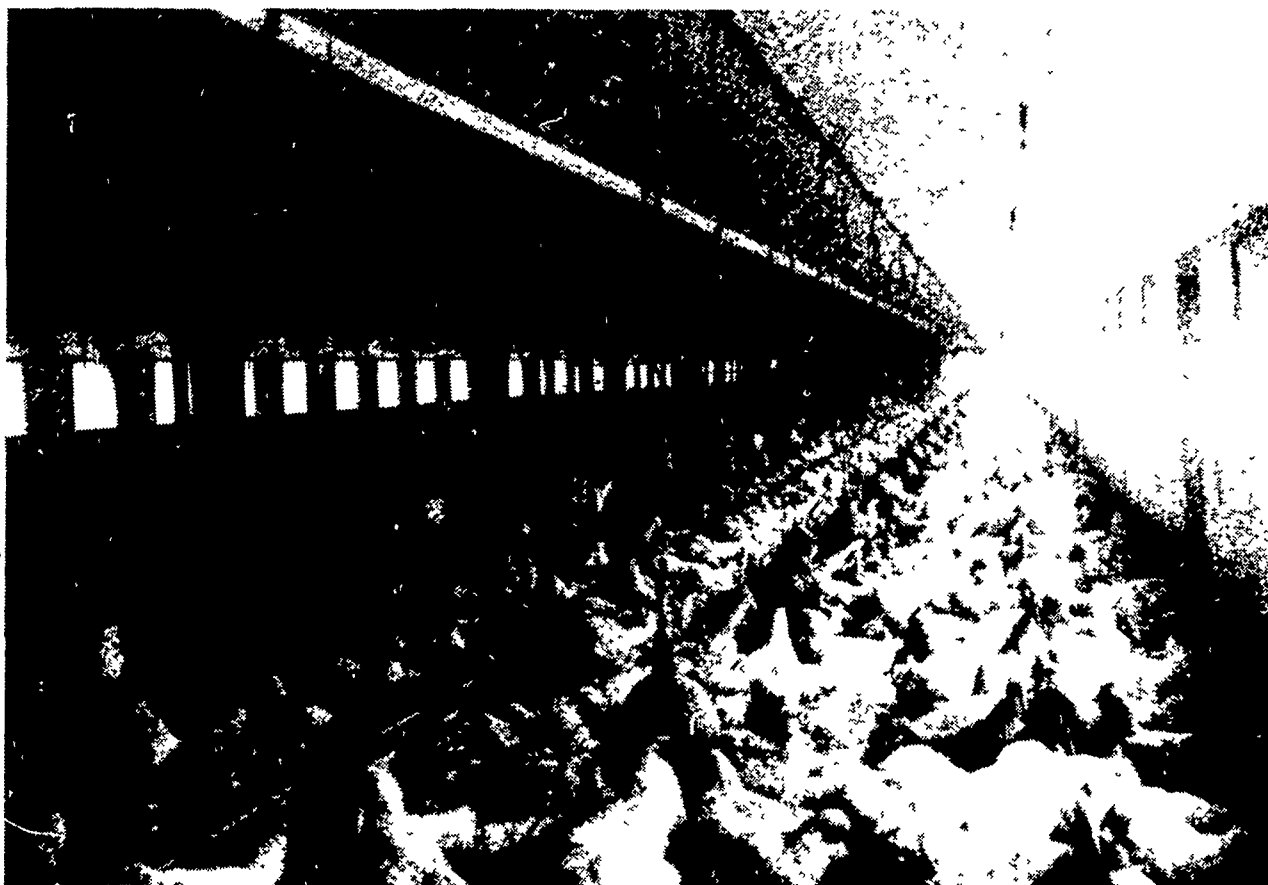
BROILER BREEDING HATCHING EGG UNIT

FOR

LONGENECKER'S HATCHERY, INC.

ELIZABETHTOWN, PA

ESTABLISHED SINCE 1920



LONGENECKER'S HATCHING EGG UNITS ARE SPECIALLY
DESIGNED FOR EFFICIENT OPERATION.

CONTACT

EARL GERLACH — 717-872-4048

FOR MORE INFORMATION

SOW CASTLE

For less than you'd expect to pay for an ordinary non-portable farrowing building, now you can get the famous AGSTAR SOW CASTLE. It's portable, and it also comes complete with stalls, feeders, heating, ventilation . . . everything you'll need to put your sows into the kind of protected environment that can save more pigs. For full details about sizes available, prices, delivery date—just clip this ad and mail with your name, address, and phone, or call us today.

LEASING AVAILABLE

AGSTAR
STAR AGRI PRODUCTS

distributed by

E. M. HERR
EQUIPMENT, INC. 717-464-3321
RD1, Willow Street, PA. 17584
Lancaster County