

Livestock market and auction news

Pa. Auction Summary

Harrisburg, Pa.
October 22, 1976

CATTLE 7707. Compared with 7363 head last week, and 7663 head a year ago. Compared with last week's market, slaughter steers steady to 50 cents lower. Slaughter heifers uneven. Slaughter cows 50 cents to \$2 lower. Slaughter bullocks weak to \$1.50 lower. Slaughter bulls mostly \$1 to \$2 lower. Steers: High Choice & Prime 38.00-40.50, Choice 36.50-40.50, Good 33.00-37.00, Standard 29.00-34.00, Utility 25.00-29.00. Heifers: Choice 34.00-37.75, Good 29.00-34.50, Standard 26.50-30.50, few Utility 22.00-27.00. Cows: Utility & High Dressing Cutter 24.00-26.75, few to 28.00, Cutters 22.50-25.00, Canners 20.00-23.50, Shells down to 15.00. Bullocks: Choice 35.00-38.00, Good 31.25-35.50, few Standard 27.00-29.00, few Utility 22.25-26.75. Bulls: Yield Grade No. 1 1000-2000 lbs. 29.00-35.85; yield grade No. 2 900-1600 lbs. 27.00-32.00. Feeder Cattle: Mostly steady to \$1 higher. Good & Choice 300-750 lbs. feeder steers 29.00-36.75, Medium 21.00-31.00; Good & Choice 300-650 lbs. feeder heifers 22.00-29.00, Medium 27.50-650 lbs. 20.00-26.00; Good & Choice 300-800 lbs. feeder bulls 28.50-33.75, Medium 350-700 lbs. 20.00-28.00. **CALVES** 5227. Compared with 5030 head last week, and 4965 head a year ago. Vealers highly uneven,

extremes \$3 higher to \$3 lower.

VEALERS: Few Prime 59.00-76.00, Choice 49.00-65.00, Good 40.00-54.00, Standard & Good 110-130 lbs. 32.00-40.00, 90-110 lbs. 28.00-34.00, Standard 70-90 lbs. 24.00-31.00, Utility 50-70 lbs. 18.00-26.50. Farm calves, holstein bulls 90-120 lbs. 31.00-42.00.

HOGS 6258. Compared with 6488 head last week, and 7525 head a year ago. Barrows & Gilts 75 cents to \$1.25 lower.

BARROWS & GILTS: US No. 1 200-240 lbs. 34.75-36.50, few to 38.50, No. 1-3 200-250 lbs. 33.50-35.50, No. 2-3 195-270 lbs. 32.50-34.50, No. 2-4 250-320 lbs. 30.00-34.00, No. 1-3 140-190 lbs. 29.25-33.00. Sows: US No. 1-3 300-540 lbs. 26.00-32.50, No. 2-3 300-650 lbs. 25.00-28.25. Boars 20.00-26.50.

FEEDER PIGS 1510. Compared with 1557 head last week, and 1722 head a year ago. Feeder pigs weak to \$3 lower. US No. 1-3 20-25 lbs. feeder pigs 8.50-19.50 per head, No. 1-3 35-50 lbs. 15.00-26.00, No. 1-3 50-75 lbs. 24.00-32.00, Utility 20-50 lbs. 3.00-16.00 per head.

SHEEP 797. Compared with 941 head last week, and 906 head a year ago. Woolled slaughter lambs mostly steady to \$2 lower. Choice 65-100 lbs. woolled slaughter lambs 38.00-44.00, Good 50-105 lbs. 29.00-41.00. Slaughter ewes 7.00-18.00.

Leesport Auction

Oct. 27, 1976

CATTLE 441. Supply included 251 head feeder cattle. Compared with last Wednesday's market, slaughter steers grading Good and Choice \$2 higher. Slaughter cows \$1.50 to \$2.50 lower. Choice slaughter steers 37.00-40.00, Good 35.00-37.00, Standard 32.00-35.00. Utility and High Dressing Cutter slaughter cows 24.00-26.00, couple to 26.25, Cutters 22.00-24.00, Canners 20.00-22.50. Choice 1000-1300 lbs. slaughter bullocks 33.00-36.00, Standard 27.00-30.00, few Utility 23.00-27.00. Yield Grade No. 1, 1300-1700 lbs 30.00-35.00. **CALVES** 135. Vealers mostly \$3 lower. Choice vealers 55.00-65.00, Good

40.00-55.00, Standard and Good 100-120 lbs. 28.00-35.00, 80-100 lbs. 20.00-28.00, few Utility and Standard 60-80 lbs. 15.00-20.00.

HOGS 267. Barrows and gilts 25 cents to 50 cents lower. US No. 1-3 200-250 lbs. barrows and gilts 33.50-34.75, No. 1-3 150-180 lbs. 28.00-32.00. US No. 1-3 300-600 lbs. sows 27.00-31.00, No. 2-3 300-550 lbs. 22.00-27.00. Boars 18.00-26.00.

FEEDER PIGS 247. Feeder pigs \$5 lower per head US No. 1-3 20-35 lbs. feeder pigs 10.00-19.00 per head No. 1-3 35-50 lbs. 19.00-24.00, No. 1-3 50-70 lbs. 24.00-30.00 per head.

SHEEP 5. Not enough of any one grade to establish a market.

Des Moines

October 27, 1976

Compared to Tuesday's close: beef trade continues slow, demand light. Choice steer beef YG 3 1.50 lower, good 1.25-1.50 lower. No sales of Choice heifer beef reported. Choice heifer hinds YG 3 1.25 lower, heifer rounds steady to 1.00 higher. Cow beef Breaking Utility steady.

STEER BEEF
Choice 600-800 lb. YG 3 60.50 1.50 lower; Good 600-800 lb. YG 3 57.25-57.50 1.25-1.50 lower.

HEIFER BEEF
Good 500-700 lb. YG3 Load 55.75.

COW BEEF
Utility (Brkg-Nthrn) YG 3-4 41.00 Steady; Utility (Bng) YG 2-3 42.00-43.00.

CHOICE PRIMAL BEEF CUTS YIELD GRADE 3
Hinds (Heifer) 120-170 lb. 70.75 1.25 lower; Rounds (Heifer) 60-85 lb. 75.00-76.00 Steady to 1.00 higher.

BEEF TRIMMINGS 50 per cent Chem. Lean Fresh 24.00-24.50.

Compared to Tuesday's close: fresh pork cut trade slow early, late moderate. Loins mostly steady, instances 1.00 lower on 17-20 lb. weights. Picnics 4-8 lb. 4.00 lower. Skinned hams under 26 lb. steady to 1.00 higher, 26 lb. & up 25-1.50 lower. Seedless bellies 10-16 lb. steady to 50 higher, 16-20 lb. 50-2.00 lower. Other cuts not well established.

FRESH PORK CUTS
Loins 14 Down lb. 76.00-77.00 Fresh & Frozen, Export; 14 Down lb. 72.00-73.50; 14 down lb. 68.75 Ship next Monday; 14-17 lb. 70.00; 14-17 lb. 73.00 Fresh, Export next week; 17-20 lb. 61.75-62.50 25 to 1.00 lower; 20 & up lb. 59.75-61.00 Steady. Picnics 4-8 lb. 4.00 4.00 lower. Spareribs 3 Down lb. 73.00 Frozen, export; 3 Down lb.

70.75. Skinned Hams 14 Down lb. 84.00 Frozen; 14-17 lb. 71.00-72.00 Steady; 17-20 lb. 65.50-66.00 Steady; 20-26 lb. 63.50-64.50 1.00 higher; 26 & up lb. 51.00-52.25 25 to 1.50 lower. Bellies, Seedless 10-12 lb. 42.50 1.00 higher; 12-14 lb. 40.50-41.00 Steady to 50 higher; 14-16 lb. 40.50-41.00 Steady to 50 higher; 16-18 lb. 36.50-37.00 50 to 1.00 lower; 18-20 lb. 33.00-35.50 50-2.00 lower. Boneless CT Butt 1 1/2-3 lb. 75.50; 3-4 1/2 lb. 75.50.

PORK TRIMMING 80 per cent Lean 47.00 Fresh; 80 per cent Lean 48.00-48.50 Frozen. Pork Shank Meat 65.00 Frozen; Pork Blade Meat 65.50 Frozen, Load 60.00; Pork Head Meat 34.00 Frozen; Offal & Variety; Pork Stomachs 11.25-12.00 Frozen.

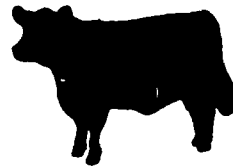
Joliet Cattle

October 27, 1976

CATTLE: 4800. Trading moderate. Slaughter steers opening weak to mostly 50 lower. Heifers weak to instances 50 lower. Larger share of steer supply loadlot yield Grade 4 few mostly 4-5 over 1200 lbs. than Monday.

SLAUGHTER STEERS: Not enough loads high Choice and Prime over 1200 lbs. sold early for a good test. Choice 2-4 97.5-125.00 lbs. 39.00-40.00 load 40.50 and load 40.75. Mixed Good and Choice 2-3 95.0-130.00 lbs. 37.00-39.00.

SLAUGHTER HEIFERS: Mixed High Choice and Prime 3-5 95.0-110.00 lbs. 37.25-38.25. Choice 2-4 87.5-105.00 lbs. 36.50-37.50.



East Coast Carlot Meats

October 27, 1976

Compared to Tuesday's close: demand and commitments light for beef as reported by USDA. Steer beef 1.25-1.50 lower. Choice beef cuts steady to 2.00 lower, most decline on arm chucks. Cow beef in limited test 50 lower. Fresh pork without adequate comparison. Lamb compared to last week steady to 2.00 lower decline on 55-65 lb.

STEER BEEF
Prime 600-800 lb. YG 3 2 Loads 64.00 No Comparison. Choice 600-800 lb. YG 3 64.00 1.50 lower. Good 600-800 lb. YG 3 61.00 1.25 lower.

COW BEEF
Utility (Brkg) YG 3-4 LTD 43.00 Steady. Utility (Bng) 600 lb. up YG 1-2 LTD 45.50 No Comparison. Canner & Cutter 350 lb. up YG 1-2 LTD 46.50 50 lower.

CHOICE PRIMAL BEEF CUTS YIELD GRADE 3
Steer Hinds 145-190 lb. Load 75.00 Generally Steady.

Arm Chucks 90-130 lb. 2 Loads 52.00 2.00 lower. Full Plates 27.00-28.00 1.00 higher. Short Plates 25.00 No Comparison. Briskets 36.00-37.00 No Comparison. Flanks, untrimmed 22.50 50 lower.

LAMB CARCASS YIELD GRADE 3-4
Choice & Prime 55 lb. down 92.00-95.00 Steady; 55-65 lb. 87.00-89.00 Steady to 2.00 lower; 65-75 lb. 80.00-84.00 Steady.

FRESH PORK CUTS
Loins 14 lb. down Load 72.00; 14-17 lb. 72.00-74.50 No Comparison.

SMOKED PORK
Skinned Hams 16-20 lb. 72.00-75.00 50-1.00 higher. No. 1 Sliced Bacon Vacuum Pack 87.00 No Comparison.

BONELESS BEEF 90 per cent Chemical Lean, Fresh LTD 64.50 Steady; 90 per cent Chemical Lean, Frozen 65.50; 85 per cent Chemical Lean, Fresh LTD 62.00 Weak.

BEEFALO CALVES

- Produce tender, lean, full flavored meat, without the fat and cholesterol which is required for taste in regular beef.
- Tremendous amount of true hybrid vigor.
- Can be registered as Beefalo half blood breeding stock for progression to a Purebred herd.
- Good supply of Beefalo x Holstein dairy calves on hand. (healthy, vigorous calves - 1 week old thru weaning age).

Semen \$10 per ampule

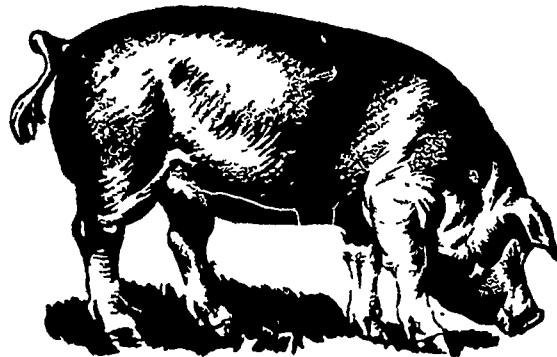
NOVEMBER SPECIAL

Four frisky heifer calves on one nurse cow.

WALNUT HOLLOW FARM

Creek Road, Pipersville, PA 18947
215-795-2452

Member American Beefalo Association



FARMERS . . .

Know what you are going to get for your hogs before they leave your farm.

Every Mon. Tues. & Wed.

8 A.M. to 1 P.M.

SAVE YOUR SELLING COST!

HOGS WEIGHED IMMEDIATELY!

PAID IMMEDIATELY!

PENN PACKING BUYING STATION

AT GREEN DRAGON LIVESTOCK SALE
1 Mile North of Ephrata RD3, Pa.

Call for Market Quotes each morning
717-733-9154 or 717-733-9648

BEEFALO HYBRID

CATTLE

BEEFALO — IT'S GREAT

- Rapid gains on grass and roughage
- 55-65 lb Births - up to 1100 lb yearling
- Test data show 62 percent carcass dress out
- We stock and distribute Pureblood Beefalo Semen and Half-Blood Beefalo heifers and bulls
- Visit our farm and see our animals

SEMEN \$12 an ampule

NOW TAKING ORDERS FOR 3/4 BULLS & HEIFERS

BEEFALO N & J

4270 Quakerbridge Road
Princeton, NJ 08540
609-896-0336

Member World Beefalo Association