

# Hog Markets

## Lancaster Market

Monday, Oct. 25, 1976  
 HOGS: Barrows and gilts 25-75 lower.  
**BARROWS AND GILTS:**  
 Few US 1 200-240 lb. 36.25-36.50; US 1-2 200-240 lb. 35.00-35.25; US 2-3 200-240 lb. 34.00-34.75, Mainly 34.25-34.75; 240-255 lb. 33.50-33.85; One lot 275 lb. 31.85.

## Lancaster Auction

Wednesday, Oct. 27, 1976  
 HOGS: Barrows and gilts 1.00-1.50 higher.  
**BARROWS AND GILTS:**  
 Few US 1 200-240 lb. 37.50; US 1-2 200-240 lb. 36.25-36.85; US 2-3 200-250 lb. 35.50-36.25.



## Joliet Cattle

Joliet, Ill.  
 Oct. 28, 1976

Friday through Wednesday salable receipts 10,618, 5 days last week, 9,098 last year 9,241. Slaughter steers 25 to 50 higher than last Friday. Heifers 50 to 75 higher.

Slaughter Steers: High Choice and Prime 3-5 1150-1325 lbs. 37.00-39.00. 4 and 5 1250-1450 lbs. 35.00-37.00.

### B & R CATTLE CO.

Washington Boro, PA  
 17582  
 Office Phone  
 (717) 872-5491

Specializing in  
 Stockers & Feeders

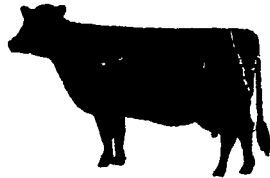
John Bowman

Ph: (717) 653-5728

Ron Ranck

Ph: (717) 656-9849

Load 5 1429 lbs. 34.50 Wednesday. Choice 2-4 975-1250 lbs. mostly 39.25-40.25, up to 41.00 Monday; 40.75 Wednesday. Mixed Good and Choice 2-3 950-1300 lbs. 37.50-39.25. Mixed Good and Choice Holsteins 2-3 1200-1400 lbs. 32.50-34.50. Good Holsteins 2-3 1200-1300 lbs. 30.00-32.50 Monday.  
 Slaughter Heifers: Mixed High Choice and Prime 3-5 950-1100 lbs. 37.25-38.25, up to 38.50 Monday. 4 and 5 1100-1250 lbs. 33.75-35.00 Wednesday. Choice 2-4 850-1050 lbs. 36.00-37.50. Mixed Good and Choice 2-3 750-1000 lbs. 35.00-36.00, up to 36.50 Monday. Good 2-3 700-1000 lbs. 33.50-35.00.



## Vintage

Vintage Hog Sale  
 Saturday, October 23  
 HEAD: 878  
 No. 1 35.85 - 36.75; No. 2 35.00 - 35.75; No. 3 34.00-34.50; Heavyweight 260-280 lbs. 31.00-34.00; 150-185 lbs. 30.00-33.50; Sows 350-600 lbs. 25.50-29.00.

Wednesday, Oct. 27, 1976  
 564 Head.  
 200 - 240 34.25-36.85; 240-270 32.50-36.85; 180-200 34.00-36.25; 140-180 30.00-34.50; Boars 320-710 20.00-22.75 per 100; Sows 350-600 25.00-28.50.

## Peoria Auction

Thursday Oct. 28, 1976  
 HOG: 4000  
 Barrows and gilts opening steady to weak, instances 50 lower, moderately active. Receipts currently 400 over early estimate.

US 1-2 200-230 lb. mostly 32.50-33.00; US 1-3 200-240 lb. 32.00-32.50, few 31.50.

## St. Louis

Thursday Oct. 28, 1976  
 HOGS: 7500  
 Barrows & gilts fairly active, steady to firm instances 25 higher.  
 US 1-2 200-235 lb. 32.25-32.75; US 1-3 200-240 lb. 31.75-32.25.

## Indianapolis

Thursday, Oct. 28, 1976  
 HOGS: 1500  
 Barrows and gilts active, 25 lower.  
 US 1-3 200-240 lb. 32.75-33.25; One lot US 2-3 250 lb. 32.25; One lot near 270 lb. 31.00; Few lots US 2-4 280-300 lb. 29.00-30.00.

## Lancaster Feeder Pigs

Tuesday, Oct. 26, 1976  
 Feeder Pigs  
 Today 2151  
 Two weeks ago 1843

TREND: Feeder pigs compared to two weeks ago 5.00-10.00 lower, instances 15.00 lower. All prices on a per hundred weight basis.  
 US 1-2 125 Head 32-42 lb. 56.00-57.50; 35-50 lb. 46.00-55.00; few 43.50-45.00; 50-70 lb. 39.00-47.00; One lot 54 lb. 51.00; 70-93 lb. 38.50-42.00.  
 US 2-3 80 head 23-31 lb. 56.00-58.00; 30-40 lb. 40.00-51.00; 40-60 lb. 36.00-47.50; 60-85 lb. 35.00-40.00.  
 Utility 65 Head 22-35 lb. 40.00-48.00; 50 Head 35-45 lb. 31.00-34.00

## New Holland

HOGS: 1452  
 Retail: 34.35-35.50  
 Heavyweight: 32.50 - 33.50  
 Lightweight: 31.50 - 33.50  
 Wholesale: 33.50 - 34.25  
 Sows: 22.00 - 29.00  
 Boars: 21.50-27.00  
 SHOATS: 1142  
 No. 1 and 2 36 - 45 lbs. 44 - 45.50, 50 - 66 lbs. 36.00 - 44.00; No. 2 35 - 43 lbs. 38.00 - 44.50, 45 - 56 lbs. 38.00 - 45.50; No. 2 and 3 21 - 35 lbs. 36.00 - 52.00, 40 - 50 lbs. 38.00 - 46.50; No. 3 20 - 30 lbs. 41.00 - 48.00, 40 - 65 lbs. 35.00 - 37.00.

## Danville

Danville  
 October 25, 1976  
**STEERS:** Good to Choice 36.00 to 37.75; Standard to Good 32.00 to 34.25; Other 28.00 to 31.50.  
**FEEDER HEIFERS** Standard to Good 27.00 to 29.25; Other 22.00 to 25.00.  
**BULLS:** 26.10 to 31.25.  
**COWS:** High Choice to Prime 23.00 to 24.35; Good to Standard 21.50 to 23.25; Utility 17.00 to 20.00.  
**CALVES:** High to Choice 40.00 to 54.00; Good to Choice 22.00 to 38.00.  
**HOGS:** 33.80 to 34.60.  
**SOWS:** 25.00 to 29.50.  
**BOARS:** 18.00 to 26.75.

# Futures Trading

Closing bids as of Thursday, October 28

	Chicago Cattle	Chicago Hogs	New York Maine Potatoes	New York Fresh Eggs
November			5.57	67.95
December	40.40	31.30		67.25
January				62.45
February	40.70	30.90		58.45
March			5.81	58.00
April	41.00	30.60	6.41	
May				
June	42.90	34.00		
July		34.40		
Aug.		33.70		

Trend—Cattle are lower, Hogs are lower, potatoes are higher, and Eggs are higher.  
 Markets Provided by Commodity Department  
 Reynolds Securities, Inc.

## CHICAGO GRAIN FUTURES

(Closing bids as of Thursday, October 28)

	Corn	Wheat	Soybeans	Soybean Meal
November			6.57½	
December	2.51¾	2.71½		185.30
January			6.67	187.50
March	2.61¾	2.82½	6.75¾	188.80
May	2.66½	2.88¾	6.76½	190.00
July	2.70¾	2.91	6.61½	189.80
Aug.			6.67	187.50
Sept.	2.68½	2.96½		

Trend—Corn is lower, Wheat is lower, Soybeans are lower, and Soybean Meal is lower.  
 Markets Provided by Commodity Department  
 Reynolds Securities, Inc.

## U.S. Inspected Livestock Slaughter

Estimated Daily Livestock Slaughter Under Federal Inspection

	CATTLE	HOGS	SHEEP
Week to Date	547,000	1,145,000	95,000
Same Period Last Week	622,000	1,285,000	105,000
Same Period Last Year	556,000	914,000	105,000

AUTUMN



### CONTACT:

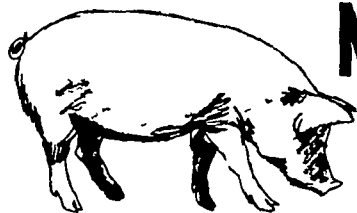
JOHN CAMPBELL  
 Atglen, PA  
 (215) 593-5529

GARY MCGEE  
 Spring Run, PA  
 (717) 349-2340

National Reputation - Local Service

## ATTENTION CATTLE FEEDERS

Do you want to make buying your stockers and feeders easy. It can be very simple. Just call and give us your order. All orders filled to your exact specifications. Call us anytime. We can be very helpful.



## NEXT FEEDER PIG SALE TUESDAY, NOV. 9, - 1 P.M.



Consign all your feeder pigs to Walter M. Dunlap & Sons where they will be handled by a capable and experienced staff.

Feeder pigs received from 6 A.M. to 11 A.M.

## WALTER M. DUNLAP & SONS

### LANCASTER STOCK YARDS

Consignors can get state tags at our office, thereby saving 25c marketing expense

For Further Information, Call 717-397-5136

## J. M. HOOBER INC.

As you know there are no easy ways to farm and to raise livestock. You work hard with your hands & back & you try to use all the knowledge your parents taught you, then you trust in the Lord.

Our business has no short cuts or easy ways either. We just work hard to supply you with quality feeder cattle & stand ready to assist you when your livestock is ready for market.

## NEXT FEEDER PIG SALE NOVEMBER 9, 1976

Please Call Us Soon  
 PH: (717) 397-6191, 569-2084, 626-5659