

THE OLD FARMER'S ALMANAC

OCT. 25-31, 1976

Tote out your overcoat.

Set your clock back one hour before going to bed on Saturday the 30th (Standard Time again) Trick or treaters will ring your bell Sunday Oct 31 First quarter of the moon Oct 29 Veterans Day Oct 25 Average length of days for the week, 10 hours, 31 minutes Stock Market crashed Oct 29, 1929 Chicago train wreck killed 44 Oct 30, 1972 Arrogance diminishes wisdom



history, and the classics of many races from extremely ancient times We never tested it out

Home Hints To keep garden tools in peak condition, rub steel wool over all cutting blades and file with a medium and then a fine file Wipe the blades with a lubricant

OLD FARMER'S WEATHER FORECASTS

New England: Early week partly sunny, then rain on and off, much cooler latter part

Greater New York-New Jersey: Week begins with light rain, then turning much cooler, sunny at week's end

Middle Atlantic Coastal: Cloudy, cold and rainy through mid-week, sunny and warmer latter part

Piedmont & Southeast Coastal: Sunny and very warm at first, then showers, latter part cooler, with some rain at week's end

Florida: Generally clear and slightly warmer than normal entire week

Upstate N.Y.-Toronto & Montreal: Rain early in week, continuing in west and central, cloudy and cold all week in east

(All Rights Reserved Yankee Inc., Dublin N.H. 03444)

Belleville Auction

Belleville, Pa.

October 20, 2976

CATTLE 167. Compared with last Wednesday's market, slaughter cows \$1.50 to \$3 lower. Utility & High Dressing Cutter slaughter cows 22.75-25.10, Cutters 22.00-24.00, Canners 20.00-22.25, few Shells down to 15.00. Few Utility slaughter bullocks 25.50-26.50. Few Yield Grade No. 1 1000-1500 lbs. slaughter bulls 28.25-31.35.

CALVES 186. Vealers grading Standard to Good 70-110 lbs. \$1 to \$3 lower. Few Choice vealers 50.00-57.00, few Good 35.00-55.00. few Standard & Good 110-130 lbs. 31.00-34.00, 90-110 lbs. 25.00-31.00, Standard 70-85 lbs.

18.00-26.00. Farm calves, holstein bulls 90-120 lbs. 31.00-41.50.

HOGS 316. Barrows & Gilts 50 cents to \$1.50 lower. US No. 1-2 200-240 lbs. barrows & gilts 35.00-35.20, No. 1-3 200-235 lbs. 34.00-34.90, few lots No. 2-3 240-255 lbs. 33.10-33.80. Few US No. 1-3 375-675 lbs. sows 25.00-32.50. Few Boars 15.00-18.50.

FEEDER PIGS 377. US No. 1-3 20-35 lbs. feeder pigs 16.50-19.00 per head, No. 1-3 35-50 lbs. 17.00-22.00, No. 1-3 60-85 lbs. 21.00-32.00, Utility 25-50 lbs. 12.50-16.00 per head.

SHEEP 19. Choice 80-110 lbs. woolled slaughter lambs 38.00-40.00 few Slaughter ewes 12.00-24.00.

Peoria Auction

Peoria, Ill.

Oct. 21, 1976

Receipts this week 6300; Last Week 5242; Last Year 4777.

Slaughter Steers through midweek steady to mostly 50 lower, instances 1.00 lower. Heifers fully 50-75, instances 1.00 lower from the same period a week ago. Cows fully 1.00 lower, instances 1.50-2.00 lower. Bulls Steady.

SLAUGHTER STEERS: Few loads high Choice and Prime 3-4, few 5, 1150-1400 lbs. 35.00-37.50, mostly 36.00-37.00; Few 4-5, 1400 lbs. 33.00. Choce 2-4, 950-1250 lbs. 36.50-38.50; mostly 37.00-38.00 on Wednesday with load 39.00 and load 39.25. Monday, Few 39.50 and half load 40.00. Mixed Good and Choice 2-4, 900-1200 lbs. 35.50-36.50. Good 900-1300 lbs. 32.00-36.00. Some Good and Choice 2-3, 1200-1450 lb. Holsteins 34.00 and Good 2, 1225 lbs. 32.00.

SLAUGHTER HEIFERS: High Choice and Prime 3-4, 900-1000 lbs. 35.50-36.50; Some Monday 37.00 and half

load 37.50. Choice 2-4, 825-1050 lbs. 34.50-36.00. Good 750-900 LB 32.00-34.00.

COWS: Utility, few commercial 2-3, late 22.50-24.00; Few 24.25-25.00; Early few to 26.00. Cutter 1-2, Wednesday, 20.00-23.00. Canner 16.00-19.00.

BULLS: Yield grade 1-2, 1100-2000 lbs. 26.00-32.00; Mostly under 31.00 late.

Joliet Cattle

Oct. 29, 1976

CATTLE: 3500. Trading moderate. Slaughter Steers under 1200 lbs. 25 to 75 lower. Over 1200 lbs. 50 to 1.00 lower. Heifers 50 to 75 lower. Supply mostly Choice Steers and Heifers.

SLAUGHTER STEERS: Few loads high Choice and Prime 3-5 1250-1400 lbs. 35.50-38.00. Choice 2-4 1050-1250 lbs. 38.00-39.00, load 39.25. Mixed Good and Choice 2-3 1000-1200 lbs. 36.50-38.00.

SLAUGHTER HEIFERS: Choice, Few Prime, 2-4 850-1050 lbs. 36.00-37.00. Mixed Good and Choice 2-3 750-1000 lbs. 34.50-36.00. Good 2-3 700-950 lbs. 33.00-34.50.

Omaha Cattle

Oct. 21, 1976

Compared with the previous week's close: prices on slaughter steers and heifers were 50-75 lower, instances 1.00 lower through midweek, but limited late sales were steady. Cows were 1.50-2.50 lower, bulls firm to 1.00 higher.

Four day receipts 15,100 as compared 10,500 previous week and 15,900 a year ago. After a stable-initial session, fed cattle prices were forced downward, partially in reaction to the sharp advance scored the previous week as carcass prices declined the forepart of the week. Midweek trading was uneven as a bearish early demand gave way to a mild aggressiveness in reflection of the uptrending carcass trade. Most interests were in need of cattle for immediate requirements early, but were generally cautious and selective as they sought to hold live prices in line with changing carcass realizations. Marketings were moderately increased over previous week but still were of modest proportions. The overall finish was again attractive with a liberal percentage choice steers and heifers included, and still several loads 3-5 1300-1600 lb. steers. Slaughter steers made up approximately 8 per cent and feeders 28 per cent.

STEERS: Three loads choice and prime 3-4 1200-1255 lbs. 39.50. In late trading choice 2-4 975-1300 lbs. 37.50-39.00, mainly 38.00-39.00, on Wednesday choice 3-5 1300-1350 lbs. 36.00-37.00, load choice and prime 3-5 1527 lbs. 35.00 and load 5 1631 lbs. 30.25. Mixed good and choice

2-3 950-1250 lbs. 36.50-37.50, load 1341 lb. Holsteins 34.75. Good 2-3 32.50-36.50. Standard and good 2-3 31.00-32.50.

Average of LS-214, detailed quotations for choice 900-1100 lb. steers this week 38.48; choice 1100-1300 lbs. 38.25. Average weight steers. First three days 1139 lbs. as compared 1127 lbs. previous week. Average weight heifers first three days 980 lbs. As compared 947 lbs. previous week

HEIFERS: Several loads choice and prime 3-4 37.75-38.00. Choice 2-4 875-1075 lbs. closed 36.50-38.00. Mixed Good and Choice 2-3 850-1000 lbs. 35.00-36.50. Good 2-3 30.50-34.50. Small lots standard and good 2-3 29.50-30.50.

COWS: Utility and commercial 2-4 21.00-22.50, few 22.75-23.00. Canner and cutter 16.50-21.00, mixed cutter and utility 21.25-21.50. Shelly canner 14.00-16.00.

BULLS: 1-2 1400-2000 lbs. 27.00-32.00, several individual 1 32.50-33.00 during week.

New Holland Horse

Monday, October 18

Reported receipts of 469 horses, mules, and ponies. Market lower than last week's market.

Load of riding horses out of Tennessee 280-900; Load of driving horses out of Tennessee 280-975.

Driving horse 150-450; riding horse 140-250; better horses 275-400; lightweight killers 15-18; heavyweight killers 22-24; mares 15-40; colts 10-25; geldings 15-35; larger ponies 50-100.

Oklahoma Cattle

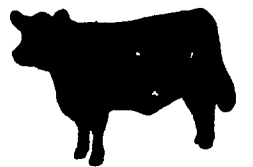
Oklahoma City

Estimated Receipts 13,000 Same day last week 11,540 Moderately active, feeder steers under 600 lb. and feeder heifers steady to 50 cents lower; Feeder Steers over 600 lb. mostly 50 cents to 1.00 higher; Majority receipts mixed good and Choice 400-800 lb. Feeder Steers and 350-675 lb. feeder Heifers; Fairly large attendance buyers.

FEEDER STEERS: Choice, Few Prime 300-500 Lb. 36.25-39.50, Part load and load 314-449 lb. 40.25-40.60; 500-600 lb. 34.50-38.00, Package 552 lb. at 39.80; 600-775 lb. 35.50-36.95; Few scattered sales 800-903 lb. 33.00-35.50; Mixed Good and Choice 300-500 lb. 33.25-35.75; 500-600 lb. 33.25-35.00; 600-775 lb. 33.75-35.50; Good 300-500 lb. 32.00-34.00; 500-985 lb. 32.00-34.00; Good 500-900 lb. Holstein Steers 25.25-28.50

FEEDER HEIFERS: Choice, Few Prime 300-500 lb. 28.00-30.25, Few part loads and load 289-477 lb. 31.70-32.30; 500-600 lb. 28.75-31.50; 600-855 lb. 29.00-32.40; mixed Good and Choice 300-500 lb. 26.75-28.75; 500-660 lb. 27.00-29.50; Few Good 300-525 lb. 26.00-26.25.

FOR THE WEEK: Compared to late last week: Feeder Steers under 600 lb. 1.50-2.00 lower, some steer calves 3.00 lower; feeder Steers over 600 lb. recovered most of the early loss to close steady to 50 cents lower; Feeder Heifers mostly 2.00-3.00 lower; Slaughter cows under extreme pressure due to liberal supply totaling near 5,000 head and 2.50-3.50 lower; Slaughter Bulls lost the early advance to close steady to 1.00 lower; salable receipts near 36,500 head compared to 26,069 last week and 29,741 the comparable period a year ago. Cows and Bulls comprised 13 per cent cattle receipts; Feeders made up 85 per cent of the total.



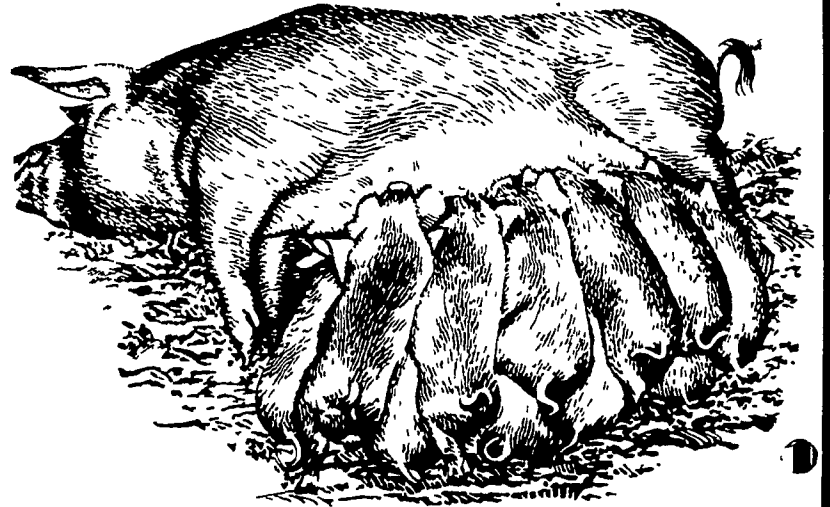
Drying Shavings and Sawdust, Mixed Stock up now while supply is good.

717-872-5656 or 717-859-1595

NEW HOLLAND SALES STABLES INC.

12 miles east of Lancaster on Route 23, New Holland, PA.

WEEKLY FEEDER PIG SALE IN AIR CONDITIONED SALES PAVILION



NEXT SALE

WEDNESDAY, OCT. 27, 1976

SALE TO START PROMPTLY AT 1:00 P.M.

WE WILL RECEIVE YOUR PIGS ANYTIME FROM 7 A.M. WED. MORNING

State Graded. All pigs inspected by State Approved Veterinarian.

Commission Charge \$1.25 per head.

25¢ additional charge for tagging.

State tags available at our office for you to tag pigs at home to save 25¢ tagging charge.

Tags delivered if you call 717-354-4341 our office in advance.

CALF SALE TO BE HELD IN NEW SALES PAVILION EVERY THURSDAY AT 6:30 P.M.

NORMAN KOLB 717-397-5538

ABE DIFFENBACH 717-393-4464