



Wendy is shown with her now famous "Doll" who took grand champion of the Holstein breed at all

the Berks area fairs as well as at the junior dairy show in Harrisburg last month.

Wendy

[Continued from Page 56]

assistant, or something like that;" and her parents, according to Wendy, "encourage me as much as they do my brother." She claims school as her second love "after my animals," and cites biology as her favorite subject and math, her most troublesome one. Wendy admits she's a good student saying, "I usually manage to get A's and B's," but quickly adds "I have to put a lot into it though."

A willingness "to put a lot into" whatever she undertakes seems to be characteristic of Wendy, and if 1976 has been a very good year for her, the future looks equally promising.

Natural gas shortage possible this winter

WASHINGTON, E.C. - Some fertilizer manufacturers may face increased natural gas curtailments during the forthcoming winter; however, methods of relief are available, says J. Dawson Ahalt, Chairman of Government's Interagency Fertilizer Task Force.

The Federal Power Commission (FPC) indicates that although expected deliveries from interstate pipeline companies are essentially unchanged from those of last winter, certain pipelines may receive smaller deliveries of natural gas. Fertilizer plants which rely on such pipeline should project natural gas availabilities both from these pipelines and from distribution companies which supply natural gas to fertilizer manufacturers. If expected curtailments on a "colder-than-normal winter" basis will lead to production losses, manufacturers should attempt to secure natural gas from other sources. Manufacturers should also seek information from gas suppliers to help plan their alternate fuel requirements or additional natural gas purchase requirements. FPC regulations permit fertilizer manufacturers to purchase natural gas from producers at market prices not subject to FPC regulations.

Fertilizer plants and other industrial users can (1) get access to natural gas from up to 60 days without FPC approval under Section 2.68 (18 Code of Federal Regulations), and (2) request arrangements for gas transportation certificates to interstate pipeline companies for longer term supplies - up to 2 years - under FPC Orders 533 and 533-A.

Under Section 2.68, which is a stop-gap measure, sales or deliveries of natural gas may go between distributors, or between an intrastate pipeline company and a distributor, for up to 60 days without FPC approval. If transportation for more than 60 consecutive days is

desired, participants must obtain advance FPC approval.

Under Order 533, the FPC reviews needs and contract provisions. It then may approve gas transportation certificates for up to 2 years, after which an extension may be requested. In this case FPC has no jurisdiction over the producer price if it is "in the public interest."

The fertilizer plant or other user must show its gas needs are of a high priority and cannot be met by alternate fuels or from its regular supplier.

If manufacturers are unable to secure supplies through the above avenues, they may petition the FPC for "extraordinary" relief from curtailment. However, the criteria for special relief are stringent and require that petitioners show they have exhausted all other possibilities.

Women's Calendar

Saturday, Oct. 23
Lancaster County Farm Women Society 4 meeting at the Garber home. 1:30 p.m. Flower program.

Monday, Oct. 25
Lebanon County Society of Farm Women Group 3 meeting at the Candle Glo Restaurant in Palmyra. 6 p.m. 35th anniversary banquet.

Berks County Society 5 meeting. 7:30 p.m.

Tuesday, Oct. 26
York County Society 12 meeting. 1:30 p.m.

Wednesday, Oct. 27
Chester County Society 1 meeting for pound sale. 1:30 p.m.

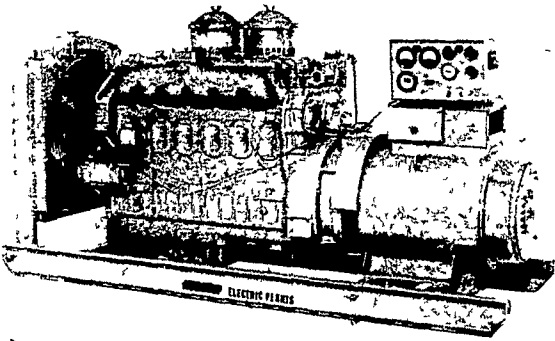
Lancaster County Society of Farm Women Group 24 meeting for decorating workshop. 7:30 p.m.

Thursday, Oct. 28
Lancaster County Society 11 meeting at social room of Quarryville Methodist Church. 1:30 p.m.

Lancaster County Society of Farm Women Group 26. Craft meeting at Stauffers.

Electric Generating Systems

Built to Your Specifications
Manual or Automatic
L. P. Gas - Diesel - Gasoline



— USED —

100 H.P. GE motor, 3 ph. 1770 RPM, ball bearing, drip proof \$500.

25 KW 31.2 KVA Gen. Set, P&H 2 cyl. dsl., 1200 RPM, 1 ph., skid \$2500.

30 KW 37.5 KVA Gen Set, IH 4 cyl. Dsl., 1200 RPM, 3 ph., skid \$1500

50 KW 62.5 KVA Gen Set, IH 6 cyl. Dsl., 1200 RPM, 3 ph., skid \$2500.

50 KW 62.5 KVA Gen Set, Caterpillar 4 cyl Dsl., 900 RPM, 3 ph., 4 wheel trailer, \$3500.

All 3 phase units can be used as single phase units.

Sales - Service

Martin Electric Plants

Isaac W. Martin, Owner

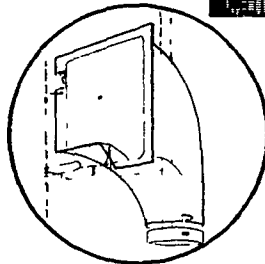
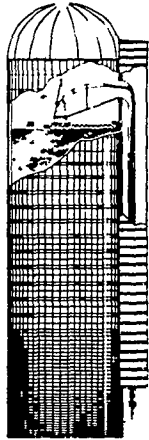
Pleasant Valley Rd., RD2
Ephrata, PA (717) 733-7968

Know Where the
Activities Will Be?

Read the
Farm Women Calendar.



A flexible chute within-the-silo chute receives all forages from unloader. Keeps fixed silo chute clean and helps eliminate corrosive chute wear. Easily installed, inexpensive and adaptable to most silo door frames.

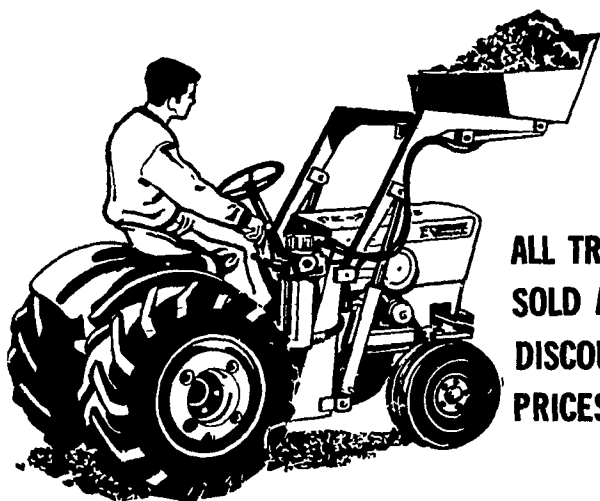


STOP IN OR PHONE
FOR LITERATURE AND PRICES

STOLTZFUS SILO EQUIPMENT

RD1, Box 77 Kinzer, PA 17535
Phone (717) 768-3873

MAN-SIZE ECONOMY TRACTOR



ALL TRACTORS
SOLD AT
DISCOUNT
PRICES

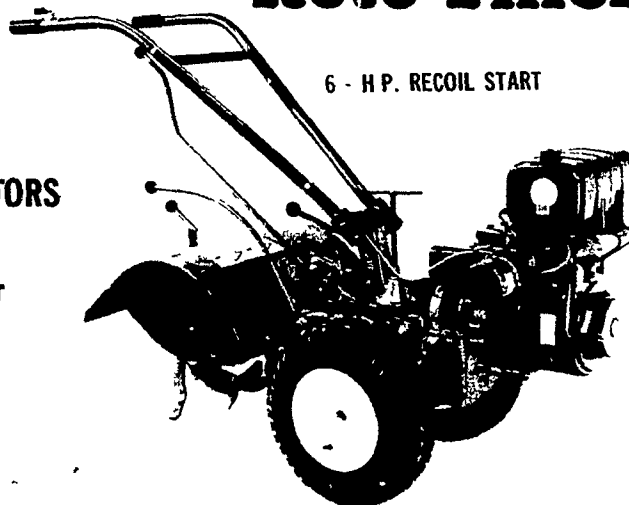
SUPER SPECIAL
JACOBSEN 14 H.P.
RIDING TRACTOR MOWER
\$500.00 UNDER 3 ONLY
LIST FOR SALE

NORMAN H. ZIMMERMAN

MYERSTOWN R.D.2
1/2 MILE WEST MYERSTOWN — WEST MAIN ST.

PHONE (717) 866-4695

TROY-BILT® Roto Tiller



6 - H.P. RECOIL START

ALL TILLERS 20% DISCOUNT
OFF REGULAR PRICE

LINE UP THESE HUNTING SUPPLY VALUES

2 PIECE
CAMOUFLAGE SUITS S - M - L - XL **\$10.95**

Ruger Model 77 Bolt Action
RIFLE Now In Stock Reg. 225.00
220 Swift - 22-250, 243, 6mm,
25-06, 270, 257, 250, 7 x 57 **\$169.95**

SMITH & WESSON
PUMP SHOTGUNS **\$79.95**
12 & 20 GAUGE CHAMBERED FOR 3

ITHACA MODEL 72 LEVER ACTION
RIFLES 22 CALIBER
WINCHESTER DOUBLE X MAGNUMS Reg. 144.95 **\$89.95**
AND REMINGTON MAGNUMS

SHELLS READY FOR DUCK SEASON

RUGER NO. 1 SINGLE - SHOT

RIFLES In Stock 22-250, 270, 3006, 45-70, 7mm Magnum
All Scopes Mounted Free When Purchased
In Our Store. We Take Trade-Ins.

SHYDA'S GUN SHOP

1635 S. Lincoln Avenue
Lebanon, Pa. 17042
717-273-6572

Open Mon. thru Fri. 9 - 9 Sat. 9 - 5