

# Poultry Market Reports

## Weekly New York Egg Market

Weekly New York Egg Market  
From Monday, October 18 to Friday, October 22

	Mon.	Tues.	Wed.	Thurs.	Fri.
<b>WHITE</b>					
Ex. Large	73	73	73	73	73
Large	71	71	71	71	71
Mediums	66	66	66	66	66
Pullets	53	53	53	55	55
Peewees	33	33	33	35	35
<b>BROWN</b>					
Large	75	75	75	77	77
Mediums					
Pullets					
Peewees					
Off Grade					
Large	66	66	66	66	66
Checks	49	49	49	49	49

Large about steady, Balance full steady to firm.

## New England Weekly Shell Egg Report

Tuesday, October 19, 1976

Prices paid per dozen Grade "A" brown eggs in cartons delivered to retail stores:

	EX LARGE	LARGE	MEDIUM	SMALL
MASS	76-80	75-78	72-74	55-57
Mostly	77-78	76-77	73-74	56-57
NEW HAMP	71-78	70-77	67-74	50-57
Mostly	75-76	73-74	AUP AUQ	53-54
R.I.	80-81	79-80	76-77	59-60
VERMONT	80-85	78-83	74-80	-
Mostly	82-83	80-82	76-78	-
MAINE	78-80	77-79	74-76	57-59

## NEST RUN EGGS

Prices are from Egg Clearinghouse, Inc., (ECI) Durham, N.H. and reflect trading prices for gradeable nest run eggs (GNR) on ECI, a nationwide trading center for producers, packers and marketers. GNR eggs are classified by weight in 30-dozen cases, and traded in lots of either 300 or 750 cases. Prices are FOB buyers dock, and are computed Tuesday and Thursday of each week. This week's prices for each classification were:

Classification	New Weight Per Case	Tuesday	Thursday
Extra Large	51 lbs.		
Class 1 - Large	48 lbs.	61	61
Class 2 - Large	45 lbs.	58	59
Class 3 - Medium	42 lbs.	57	57
Class 4 - Small	39 lbs.	48	49
Breaking Stock	48 lbs.	59	59
Checks	48 lbs.	50	50

## Philadelphia Eggs

Wednesday, Oct. 20, 1976

Prices unchanged. Cartoning demand fair to good. Offerings adequate on larger sizes. Well cleared on mediums. Undertone steady.

Prices to retailers: Sales to volume buyers, consumer grades white eggs in cartons, delivered: Store Door. A Extra Large 73-75½; A Large 72-74½; A Medium 65-68.

## Lancaster Farming

P.O. Box 266 - Lititz, PA 17543  
Office: 22 E. Main St., Lititz, PA 17543  
Record-Express Office Building  
Phone: Lancaster 717-394-3047  
or Lititz 717-626-1164

Robert G. Campbell, Publisher  
Dieter Krieg, Editor  
Joanne Spahr, Associate Editor  
Judy Mitchell, Berks County Correspondent  
Joyce Bupp, York County Correspondent

Subscription Price: \$4 per year  
Established November 4, 1955  
Published every Saturday by Lancaster Farming  
Lititz, PA  
Second Class Postage paid at Lititz, PA 17543

For Address Change form or new subscription see Classified Section.

Members of Newspaper Farm Editors Assn, Pa. Newspaper Publishers Association, and National Newspaper Association.

## Hay Markets

Harvey Z. Martin

Leola, Pa.  
Hay, Straw  
And Grain

Wednesday, Oct. 20  
30 Loads.  
Alfalfa 74 to 103; Clover 1 load 47; Timothy 53 to 84; Mixed Hay 56 to 65; 2 loads Half and Half, Hay and Straw, 40 to 48; 1 load Stubble Hay 60; Straw 50 to 83; Old Ear Corn 78 to 96.50; Mostly 84 to 96.50; 1 load New Ear Corn 54; 1 load Oats, \$1.60 pr. bu.

## Regional Hay

Hay Prices For Southeastern & So. Central Pennsylvania (All hay No. 2 and better, prices paid by dealers at the farm, price per ton.)  
Hay & Straw fully steady. Alfalfa 75.00-80.00; Mixed hay 60.00-70.00; Timothy hay 55.00-65.00; Straw 50.00-55.00, few down to 40.00; Mulch 20.00-30.00.

## Green Dragon

October 15, 1976  
21 loads hay.  
Alfalfa, one load 72.00; Timothy, couple 68.00&74.00; Mixed hay, 66.00-79.00, one 92.00; Stubble hay, one load 45.00; Straw 5 loads 58.00-70.50 one load 84.00; Corn, 3 loads couple 53.50-55.00, one load 87.00.



## Delmarva Poultry

Wednesday, Oct. 20

Ready to cook movement fair on whole birds and breasts, dull on legs and wings. Slaughter schedules heavy at most plants. Today's LTL asking prices unchanged on both plant and US Grade A. Advance negative to LTD to quote prices. Live supplies ample at weights in a wide range. Undertone unsettled to weak. Current broiler-fryer negotiated prices for immediate includes mostly multiple-drop shipments to New York City from Delmarva.

Range US Grade A 37¼-38; Plant Grade 36-37; Premium X US Grade A 39-43; Premium X Plant Grade 38-41.

Wtd. Avg. 37.98; Plant Grade 36.87; Premium X US Grade A 41.57; Premium X Plant Grade 40.58.

X - includes special services, selected competitive brands, etc.

## Baltimore Eggs

Wednesday, Oct. 20, 1976

Market steady. Demand slow and very disappointing. Supplies adequate to ample.

Cartoned eggs: Prices to retailers, state graded (min. one case sale) white: Grade A Large 75-78, Grade A Medium 70-73.

## Eastern Pa. & N.J. Poultry

Wednesday, Oct. 20

Eastern Pennsylvania and New Jersey live poultry report: Prices unchanged to lower on light type hens. Demand fairly good for adequate farm offerings. Offerings of heavy type adequate for a fair call.

Prices paid at farm: light type hens 13-14, mostly 13½-14 in Pa.; mostly 13½-14 N.J. Heavy type hens TFEWR.

## New Holland Dairy

New Holland Sales Stables  
Wednesday, October 20, 1976

Reported receipts of 165 cows, 33 heifers, and 4 bulls. Market lower than last week's market.

Load of Pennsylvania fresh cows 470-645; Load of Wisconsin fresh cows 575-950; Load of Pennsylvania fresh cows 690-830; Load of Pennsylvania fresh cows 885-1025, springers 875-975; Load of Franklin County fresh cows 550-675, springers 530-800; Herd of 23 head at all stages of production 310-710; Herd of 26 head at all stages of production 340-590.

Locally consigned cows 500-900; Springing heifers 450-650; Open heifers 125-275; Bulls 390-490.

## SENIOR CITIZEN'S CORNER

HELPFUL IDEAS FOR SUCCESSFUL RETIREMENT

**Kitchen Considerations**  
Research studies show that elbow height is one measurement that best determines the most comfortable work height for a person standing in front of a counter, range, oven or sink

To find elbow height stand against a wall and bend the arm usually used for food work at a right angle. Have someone hold a finger where your elbow touches and measure that distance from the floor

For most activities at kitchen counters, a homemaker needs a work surface three inches below her elbow height. But for motions requiring the exertion of force or holding a mixer or beater, the homemaker needs a work surface six or seven inches below her elbow height. Thus, for more comfortable work in the kitchen, more than one height work surface may be needed

Height can be added to the counter by putting blocks under the cabinet or adding a platform on top. Although counters cannot be lowered easily, a homemaker can find a convenient height elsewhere. The bottom of a sink is one possibility; the kitchen table, a drawer or utility cart are other ways. The legs of a table may be adjusted to correct height.

Know Where the Activities Will Be  
Read the Farm Women Calendar.



## GREEN DRAGON LIVESTOCK SALES

1 mile North of Ephrata, PA

### SALE EVERY FRIDAY

Bulls, Steers, Slaughter Cows, Lambs and veal calves.

11:00 A.M. - Beef Sale Stockers & Feeders  
200 to 250 each week.

12:30 P.M. - Dairy Cows  
7:00 P.M. - Small Animal Sale

We will have consignments from Alfred Albright, Bob Kennedy, Ray Keiper, Kelly Bowser, and Dale Brewer.

Bring a Load and Buy a Load.

For Special Sales and Herd Dispersals on the farm or at our barn or other market information call: Office 717-733-2444.

Walter H. Risser, Proprietor

## Moyer's - DEKALB

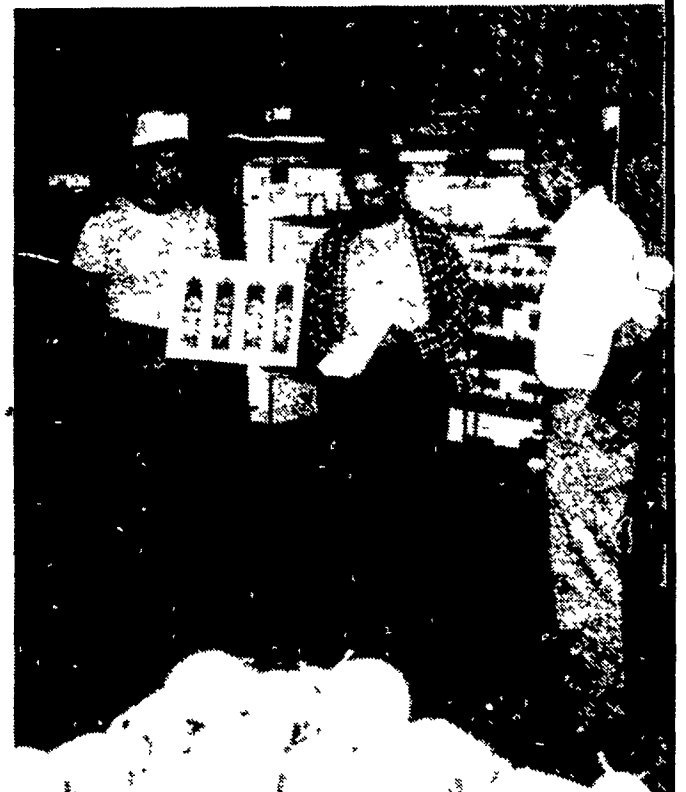
THE WINNING COMBINATION

### ROBERT & GLEN KRUM

Krum Bros. Orchards  
Catawissa, PA

10,400 DeKalb Layers

Carroll Barton, MCI sales rep., admiring a dozen eggs (held by Bob) typical of those winning four consecutive blue ribbons (displayed by Glen) at the Penna. State Farm Show.



Bob comments on their choice of Moyer's DEKALB: "A majority of our eggs are retailed through our own fruit market and other direct farm outlets. We must have a good quality, large egg. We've come to expect this from the 137 layer we've been purchasing from Moyer's over the past 10 years. We also like to see those production peaks into the 90 percent range!"

## Moyer's CHICKS, INC.

DEKALB  
BROWN & WHITE  
EGG LAYERS

Quakertown, PA 18951  
(215) 536-3155

HUBBARD  
WHITE MT.  
BROILERS