

State convention begins Monday

Youth Grange program outlined

HARRISBURG - Young Grangers, from five to 35 years old, will have their "days" at the 104th annual convention of the Pennsylvania State Grange, to be held in Sharon, Mercer County, from October 25 to 28.

Something new has been added to this year's program, the first "Junior Day" to be held in con-

nection with a State convention, according to J. Luther Snyder, master of the State Grange.

The Junior program, for youngsters from five to fourteen years old, will open at 10 a.m. Monday in the auditorium of the West Middlesex High School. A team from Mercer County will exemplify the Junior activities for the Penn-

sylvania State Grange, and Mrs. Mary Ross, director of junior activities for the Ohio State Grange.

A luncheon will be held for the Junior Grangers at 11:30 at the Sheraton Motor Inn followed by tour of a candy factory and garden center.

During the evening program, beginning at 6:20 p.m. Monday in the Sharon High School auditorium, the

Pennsylvania Junior Prince and Princess will be introduced. They are John H. Shankweiler, of Schnecksville R2, and Susan M. Young, Schnecksville R1, both Lehigh County.

The Junior Grange talent winners of 1976 will be introduced and will present their award winning performances. They are: Faith and Ross Pifer, Reynold-

sville R3, Jefferson County, winners in the vocal competition; Susan McAdams, Mill St., Fredonia, Mercer County, instrumental; and Sheila Merkel, Kutztown R3, Berks County, other acts.

The traditional Youth Day will be on Wednesday, October 27, when young people from 19 counties will fill the officers' chairs for the opening of the morning session at 9 o'clock. Douglas Bonsall, Millerstown R1, chairman of the State Grange youth committee will submit his report to the delegates at 9:40 a.m.

A youth ritual and demonstration contest will be held at 2 p.m. in the West

Middlesex High School gymnasium, followed by the annual youth banquet at 5 p.m. and youth party at the Sharon High School cafeteria. The speaker at the banquet will be J. Collins McSparran, of Camp Hill, past State Grange master.

Another highlight will be the arts and crafts display at the convention headquarters at the Sheraton Motor Inn. It will include photography, painting, needlework, baked goods, embroidery and bicentennial samplers. Entries will be judged Tuesday, and the displays will be open to the public after that, the State Grange master said.

WHEN ALL ELSE FAILS

ADD CONFIDENCE TO YOUR LIQUID MANURE SYSTEM

GET A DELTA

SLURRY GUN

To pump out the heavy solids in your liquid manure tank or lagoon

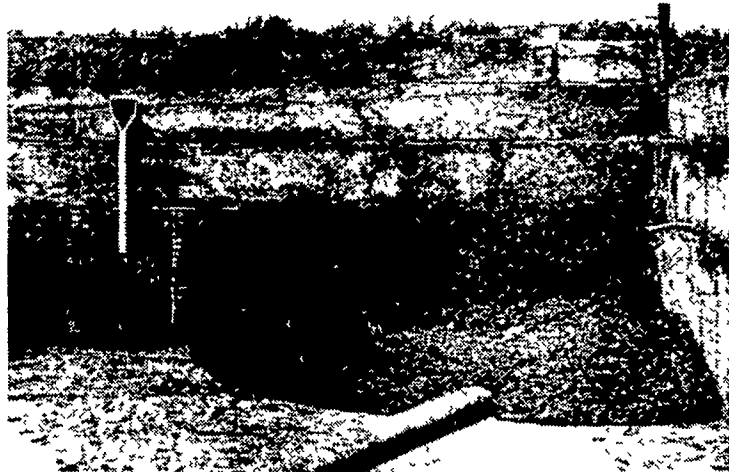
We can help you load your spreader with Heavy Slurry instead of Water

YOU CAN USE IN:

- ★ Dairy Systems
- ★ Calf Barns
- ★ Beef Lots
- ★ Swine Systems
- ★ Poultry Operations
- ★ Sewage Disposal
- ★ Removal of Sludge



An example of the semi-solid manure moved by the Slurry Gun.



Available for

- Truck Mount Spreaders
- Your Present Farm Tank Spreader

COMING SOON

A fantastic New type Liquid Manure Pit and Lagoon Agitator

Call us today for a demonstration on your farm or ask us when we are working the pump at one of your neighbor's farms.

SHENK'S FARM SERVICE

501 E. WOODS DRIVE, LITITZ, PA 17543 PHONE (717) 626-1151
ANSWERING SERVICE (717) 733-1224

Potato crop record large

WASHINGTON, D. C. - Although exports of U.S. potatoes should increase during the 1976-77 marketing year, the U.S. Department of Agriculture predicts that this country's potato supplies will be more than adequate due to a domestic crop appreciable larger than last year's 326 million hundredweight.

In 1975-76, the marketing year that ended Sept. 30, the United States exported 21 million hundredweight of potatoes fresh equivalent - 6 per cent of its total crop. USDA officials said U.S. supplies will be adequate to meet both domestic requirements and overseas demand. It appears that the 1976 Fall harvest will be record large. This season's larger supply is reflected in recent wholesale prices at Eastern points of around \$3.00 per hundredweight, compared with \$6.82 last season for the short 1975 crop.

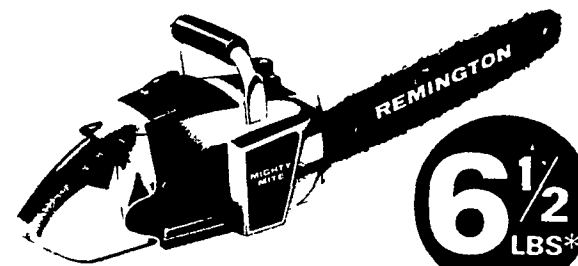
Drought has reduced the new potato crop in most

European countries. The harvests are expected to be smaller than last year's poor crops in a number of important producing countries including France, West Germany, the Netherlands, Belgium, and the United Kingdom. This will likely result in an increase in U.S. exports to Europe, although sanitary restrictions remain a serious deterrent.

Sanitary restrictions have been a serious deterrent to U.S. exports of potatoes to Europe in past years. This problem has not appreciably diminished.

It appears likely that the increase in U.S. exports to Europe in 1976-77 will be in the form of both fresh and processed products. In addition to seeking potatoes and potato products in the United States, it is expected that European countries will purchase stocks from additional areas such as Canada, some East European countries, and North Africa.

REMINGTON MIGHTY MITE DELUXE CHAIN SAW



Big 14" Cutting Bar *less bar and chain

EASY TO HANDLE, FUN TO USE

5 QUESTIONS YOU SHOULD ASK WHEN BUYING A CHAIN SAW

1. Is service available when needed?
2. Are parts in stock for repair?
3. Does quality equal the price?
4. Is it manufactured in U.S.A.?
5. Is the warranty two years?

All 5 questions can be answered Yes

Plus - Financing Available At

GEHMAN BROS.

SALES & SERVICE
1 MILE NORTH OF
TERRE HILL ON RT. 897
PHONE [215] 445-6272

ALLEN H. MATZ, INC.

505 E. Main St.,
New Holland
Phone: [717] 354-2214