



J. M. HOOBER INC.

As you know there are no easy ways to farm and to raise livestock. You work hard with your hands & back & you try to use all the knowledge your parents taught you, then you trust in the Lord

Our business has no short cuts or easy ways either. We just work hard to supply you with quality feeder cattle & stand ready to assist you when your livestock is ready for market.

NEXT FEEDER PIG SALE

OCTOBER 26, 1976

Please Call Us Soon
 PH: (717) 397-6191, 569-2084, 626-5659

BEEFALO HYBRID CATTLE

BEEFALO — IT'S GREAT

- Rapid gains on grass and roughage
- 55-65 lb. Births - up to 1100 lb. yearling
- Test data show 62-percent carcass dress out
- We stock and distribute Pureblood Beefalo Semen and Half-Blood Beefalo heifers and bulls.
- Visit our farm and see our animals.

SEMEN \$12 an ampule

NOW TAKING ORDERS FOR 3/4 BULLS & HEIFERS.

BEEFALO N & J

4270 Quakerbridge Road
 Princeton, NJ 08540
 609-896-0336
 Member World Beefalo Association

CONTACT:

JOHN CAMPBELL
 Atglen, PA
 (215) 593-5529

GARY McGEE
 Spring Run, PA
 (717) 349-2340

National Reputation - Local Service

Hog Markets

Lancaster Market

Monday, Oct. 18, 1976
 HOGS: Barrows and gilts 1.00-1.25 lower.
BARROWS AND GILTS: Few US 1 210-235 lb. 37.00-37.50; US 1-2 200-240 lb. 35.75-36.00; US 2-3 200-240 lb. 35.00-35.50; 240-255 lb. 34.50-35.00; Few 250-275 lb. 32.50-34.00

New Holland

New Holland Sales Stables
 HOGS: 1391.
 Retail 37.00-38.25; Heavyweight 35.50-36.25; Lightweight 34.50-36.25; Wholesale 36.25-37.00; Sows 22.00-29.50; Boars 22.00-29.50.

New Holland Sales Stables

SHOATS: 731.
 No. 1 and 2 3'-42 lbs. 62.00-63.00, 45-60 lbs. 52.50-60.00; No. 2 29-44 lbs. 50.00-69.00, 46-58 lbs. 49.50-57.00; No. 2 and 3 30-40 lbs. 45.00-61.00, 44-64 lbs. 52.00-54.00; No. 3 28-39 lbs. 41.00-59.00, 48-70 lbs. 43.00-51.00; Utility 30-40 lbs. 35.00-59.00, 43-51 lbs. 40.00-47.00.

Indianapolis

Barrows & gilts active, mostly 50 higher instances 75 higher.
 US 1-2 200-230 lb. 33.75-34.00, 70 head 34.00; US 1-3 200-245 lb. 33.00-33.75; Many 33.25-33.50.

Lancaster Auction

Wednesday, Oct. 20, 1976
 HOGS: Barrows and gilts mostly steady.
BARROWS AND GILTS: Few US 1 210-230 lb. 37.00-37.25; US 1-2 200-240 lb. 35.50-35.75, few 36.00; US 2-3 200-245 lb. 35.00-35.50 245-270 lb. 34.50-35.00; One lot 318 lb. 30.50

St. Louis

Thursday, Oct. 21, 1976
 Barrows & gilts fairly active, 50-75 higher.
 US 1-2 200-230 lb. 33.50-33.75; about 100 head; US 1-3 200-235 lb. 33.00-33.50; 235-250 lb. 32.00-33.00.

Peoria Auction

Thursday, Oct. 21, 1976
 Barrows & gilts active, opening 1.00 higher. Receipts currently 500 under estimate.
 US 1-2 200-230 lb. 33.50-33.75; 250 head 34.00; US 1-3 200-240 lb. 33.00-33.50.

Vintage

Feeder Pig Sale
 Friday, Oct. 15, 1976
 Thirty to 40 lb. 50-54 cents; 40 to 50 lb. 48-50 cents; 50 to 70 lb. 44-48 cents.

Vintage Sales Stables
 Wednesday, Oct. 20, 1976
 Head: 378
 No. 1 hogs - 35.00-35.60; No. 2 and 3 hogs - 34.35-34.85; Heavy hogs (250-270 lbs.) 33.50-35.00; Sows (350-475 lbs.) 23.75-26.75; Boars (300-600 lbs.) 22.75-23.75.

Vintage Hog Sale
 Saturday, October 16
 Vintage, Pa.
 HOGS: 898.
 No. 1 38.10 - 38.60; No. 2 37.00 - 37.75; No. 3 36.35 - 36.75; Heavyweight 250 - 270 lbs. 34.00 - 36.35; 170 - 190 lbs. 32.00 - 35.00; Sows 300 - 700 lbs. 26.75 - 28.00.

Futures Trading

Closing bids as of Thursday, October 14

	Chicago Cattle	Chicago Hogs	New York Maine Potatoes	New York Fresh Eggs
November			5.03	67.75
December	42.30	31.70		67.70
January				62.30
February	42.50	31.30		59.25
March			5.80	58.50
April	42.80	30.65	6.38	
May			8.29	
June	44.10	39.90		
July		34.35		
Aug.	44.27	33.30		

Trend—Cattle are lower, Hogs are lower, Potatoes are higher, and Eggs are higher.
 Markets Provided by Commodity Department Reynolds Securities, Inc.

CHICAGO GRAIN FUTURES

(Closing bids as of Thursday, October 14)

	Corn	Wheat	Soybeans	Soybean Meal
November			6.26½	
December	2.64½	2.86¾		180.20
January			6.34%	182.20
March	2.73¾	2.98¾	6.41	185.20
May	2.78¾	3.05½	6.43%	186.00
July	2.82½	3.10	6.42¾	185.00
Aug.			6.39	183.00
Sept.	2.77	3.16		

Trend—Corn is lower, Wheat is lower, Soybeans are higher, and Soybean Meal is higher.

Markets Provided by Commodity Department

Reynolds Securities, Inc.

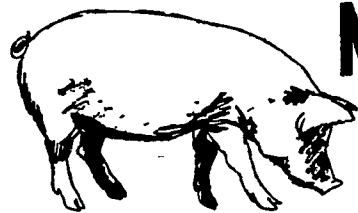
U.S. Inspected Livestock Slaughter

Estimated Daily Livestock Slaughter Under Federal Inspection

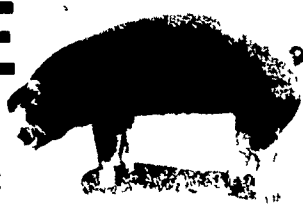
	CATTLE	HOGS	SHEEP
Week to Date	611,000	1,281,000	102,000
Same Period Last Week	600,000	1,274,000	105,000
Same Period Last Year	603,000	948,000	120,000

ATTENTION CATTLE FEEDERS

Do you want to make buying your stockers and feeders easy. It can be very simple. Just call and give us your order. All orders filled to your exact specifications. Call us anytime. We can be very helpful.



NEXT FEEDER PIG SALE
TUESDAY, OCT. 26, - 1 P.M.



Consign all your feeder pigs to Walter M. Dunlap & Sons where they will be handled by a capable and experienced staff.

Feeder pigs received from 6 A.M. to 11 A.M.

WALTER M. DUNLAP & SONS

LANCASTER STOCK YARDS

Consignors can get state tags at our office, thereby saving 25c marketing expense

For Further Information, Call 717-397-5136

ATTENTION FARMERS!!

SPRAY MATERIALS

AND

INSECTICIDES

Place Orders Now For Best Price On

FURADAN

IM-PRUV-ALL BALANCED SOIL TESTING

QUALITY CONKLIN PRODUCTS

MELVIN R. WEAVER

RD1 Box 529

Manheim, PA

PH: 717-569-6576