

## Ag outlook

(Continued from Page 1)

members were joined by other commodity producers to support a requirement that dairy imports coming from European markets meet the same stringent sanitation requirements now imposed upon domestic production.

Turning to legislative issues, voting members questioned, and then refused support of, H. R. Bill No. 10339, the Farmer-To-Consumer Direct Marketing Act, because of the feeling that it would increase government cost without directly helping farm markets or consumers in any foreseeable way. State legislation supported was the Balanced Budget Amendment, which has passed the House and is now in the Senate in Harrisburg, calling for federal fiscal responsibility.

Newly adopted policies affecting the organization's internal operations lean toward better farmer-consumer understanding. Members agreed with policy development committeemen that the Association sponsor three to six yearly "Down On The Farm Weekends" to which the public be invited to view working farms. The establishment of a Speakers Bureau of knowledgeable farmers and farm wives to visit schools and be available free of charge to non-farm groups and organizations was approved.

Another adopted policy calls for both the county and state organizations to make available exhibits telling the farmer's story for use at any farm's open house for the public, or to any public event that would request them.

Policies offered from the floor but turned down by the voting membership included the halting of government livestock and crop surveys, agricultural exemption of vehicle air-pollution devices, and the issuing of new metal license plates yearly for farm trucks.

Additional business conducted at the meeting included the election of five members to the Association's board of directors. Serving new two-year terms will be E. Wayne Beshore, Eugene Ort, Charles Rauhauser, Glenn Shaw, and David Wolf. Lester Luckenbaugh, a grain farmer from Spring Grove,

### Silo Sale

The sooner you buy, the more you save.

Never again will you be able to buy a new, 1977 Madison Silo at such a low price. Madison's Winter Purchase Plan is on!

**Tax Savings, too.** Check your accountant, tax man. Could investment credit savings start this year?

**Financing**—Up to 5 years with Madison Silos Finance Plan in most states. And your local farm credit man probably knows the Madison name well known as the quality silo for 63 years. Over 85,000 sold!

**Immediate Delivery** of 1977 Madison Silos. Erection still possible in some areas. See your Madison Silos dealer now!

For fastest action call

Chromalloy Farm Systems  
MADISON SILOS  
BRANCH  
1070 Steinmertz Road  
Ephrata, Pa. 17522  
717-733-1206

was chosen the 1977 membership drive chairman.

Eugene McDowell, region organizational director, presented a brief slide preview of the PFA state annual meeting and urged county members to support the state activities by taking part in this November event.

Special guests at the Dover meeting included State Director James Kreider, of Lancaster County, who briefly explained a number

of services offered to members through the state affiliation. He detailed the PACMA marketing plan, FMBAS accounting service, Safemark farm products, and Farm Family insurance coverage.

Mrs. Helen Wivell, state women's committee, encouraged the wives participation in county activities and requested their input into state committee decisions. Members involved will focus on the areas of farm family safety and health, member relationships and welfare reforms. Mrs. Wivell announced plans

for a Women's Legislative Conference on February 14, 1977, to be held at the Penn Harris Motor Inn, Harrisburg.

After-dinner entertainment was presented by Miss Molly Dehoff, daughter of Association members Mr. and Mrs. Albert Dehoff, of Dallastown. Molly was named the York County talent winner earlier this year in competition sponsored by the women's committee. Included in her presentation was "Milk Bucket Boogie," a humorous salute to the nation's dairymen.

### Pork Chop Fun

Chops are a favorite among the many flavorful pork cuts. Since they are served frequently, it's fun to vary the seasonings and braising liquid for new main dishes. For more variety, stuff thick rib chops with fruit, vegetable or bread stuffing. Another variation of braising is to brown the chops and then bake them on top of dressing in a covered casserole.

XXX

### More Contented?

U.S. cows are the most productive of all milk cattle in the world's major dairy-producing countries.

### Calories Cut

One of the greatest misconceptions about pork concerns calorie content, since from the past pork acquired a reputation as a "fatty" meat. Actually research shows that many cuts of pork are just as low in fat as similar cuts of beef or lamb. Pork cuts on the market today contain a larger proportion of lean meat than in former years. The cuts contribute fewer calories, which pleases those on special diets.

**TRY A CLASSIFIED**

## DRY THAT CORN

WITH A

**GT Tox-O-Wik**

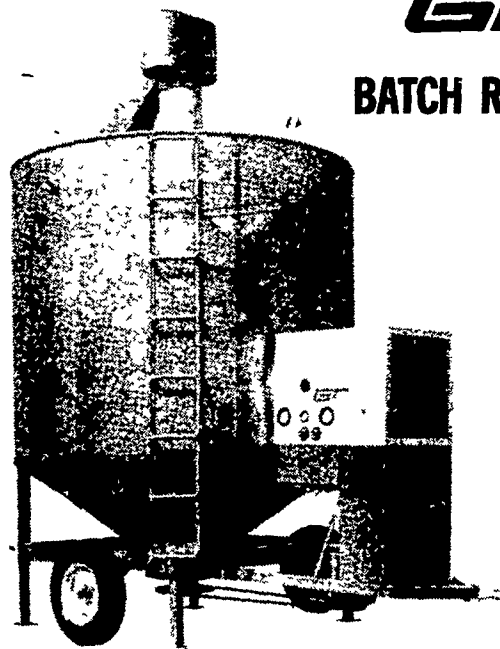
BATCH RECIRCULATING DRYER

- Low Operating Cost
- Simple Operation
- Self Loading and Unloading
- Grain Cleaner within Dryer

We Have More Dryers in Stock

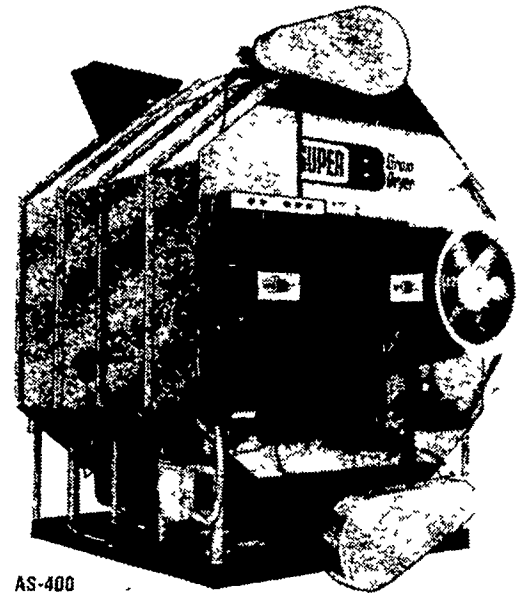
Models No. 370 and No. 570

Set up time and cost on these "Dryers is minimal



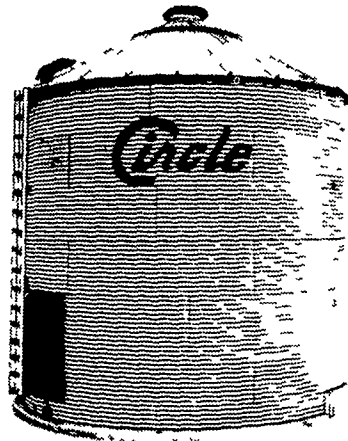
**SUPER B**

AUTOMATED BATCH DRYER



### CIRCLE

- GRAIN BINS
- FEED BINS
- GRAIN AUGERS



THE MILKER DAIRYMEN ARE TALKING ABOUT

CHECK WITH US FOR YOUR

### LIQUID MANURE EQUIPMENT

Better Bilt Vacuum Spreaders

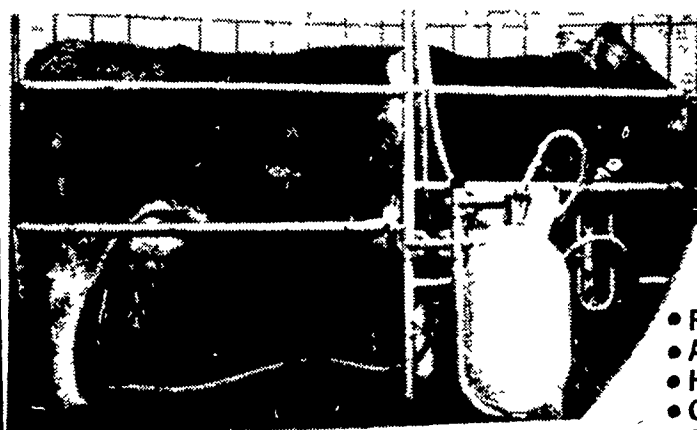
with or without Injection Chisels

Husky Spreaders

1250 Gal. - 3750 Gal.

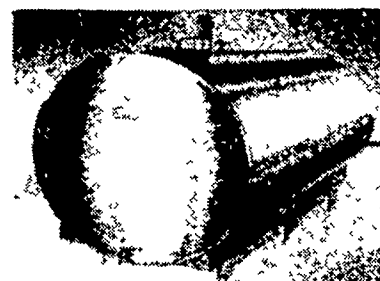
Husky Manure Pumps

"Slurry Gun" for that Tough Pumping Job



Call Us For A Demonstration In Your Stable or Parlor

- Pail Milkers
- Around the Barn Pipeline
- Herringbone Milking Parlors
- Carousels and Polygon Parlors
- Auto. Teat Cup Detachers



**DARI-KOOL**  
BULK MILK COOLERS

USE YOUR MILK TO MAKE HOT WATER WITH THE THERMA-STOR

### USED BULK MILK TANKS

600 Gal. Sunset	300 Gal. Jamesway	300 Gal. Girton
500 Gal. Mojonnier	400 Gal. Jamesway	D2-1000 Gal. Girton
600 Gal. Mojonnier	300 Gal. Mueller	

Complete Planning — Installation — Service

## SHENK'S FARM SERVICE

501 E. WOODS DRIVE, LITITZ, PA 17543

Answering Service 717-733-1224

PHONE (717) 626-1151