

# World Dairy Exposition visited

By DIETER KRIEG

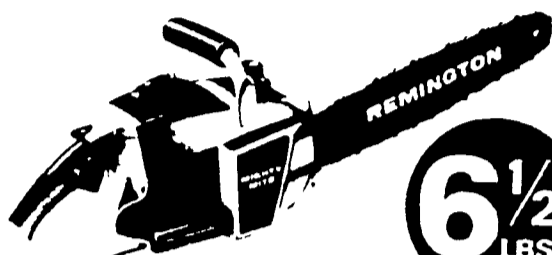
MADISON, Wis - As the Boeing 707 jetliner sat on the ground at Harrisburg's International Airport, clouds loomed overhead and rain was falling. Approximately 25 farmers



Six youths from two Lancaster County high schools - Solanco and Ephrata - were among a group who visited the World Dairy Exposition last week. Left to right, they are: Bruce Kreider, Sam Long, and Ron Clark, all of Solanco, and Curtis

Martin, Sheryl Bollinger, and John Weidler of Ephrata. Accomplished judges of dairy cattle, they were accompanied by their coaches, Dr. William Fredd, Solanco and Lew Awres, Ephrata.

## REMINGTON MIGHTY MITE DELUXE CHAIN SAW



Big 14" Cutting Bar

6 1/2 LBS\*

\*less bar and chain

EASY TO HANDLE, FUN TO USE

### 5 QUESTIONS YOU SHOULD ASK WHEN BUYING A CHAIN SAW

1. Is service available when needed?
2. Are parts in stock for repair?
3. Does quality equal the price?
4. Is it manufactured in U.S.A.?
5. Is the warranty two years?

All 5 questions can be answered Yes

Plus - Financing Available At

## GEHMAN BROS.

SALES & SERVICE  
1 MILE NORTH OF TERRE HILL ON RT. 897  
PHONE (215) 445-6272



and A.I. representatives from various parts of Pennsylvania and Maryland were on board to see what is annually billed as one of the greatest exhibitions of dairy cattle in the world - the World Dairy Exposition in Madison, Wis.

The four-engine jet screamed down the wet runway and clumbed above the clouds. Shortly thereafter the plane's passengers could see sunshine again - something the folks back home had to do without for the next four days.

Record-breaking heat (as high as 90 degrees Fahrenheit) awaited the group, which was guided by American Breeders Service, DeForrest, Wis. On the itinerary were visits to the ABS facilities in the Nation's "Dairyland" and attending the shows and a sale at the Expo.

Although the World Dairy Exposition had nearly 500 fewer cattle entered than its Eastern counterpart - the Pennsylvania All-American, which was held just a week earlier in Harrisburg, this show possibly carried a little more prestige. Visitors at the five-day event included hundreds of foreigners. The Japanese and West Germans appeared to be

most prominent among those from overseas, with the latter taking up an entire Greyhound bus to themselves. At the "World Premier" Holstein Sale on Friday night, it was announced that between 30 and 40 countries were in the audience which numbered over 7000. It was reported to be the largest crowd ever gathered for a sale. A separate story on the sale appears elsewhere in this issue.

Among the highlights of the visit to the ABS facilities was a look into the cattle breeders' version of "Fort Knox." More than 2 1/2 million ampules of semen were stored in the building. Taking an average price of \$10 per ampule, the semen represented a value of \$25 million.

The Pennsylvania-Maryland group was just one of many which came here through the ABS-sponsored tour. The various parties were shown through the bull stud facilities, including barns which were built 14 years ago "to be 20 years ahead of their time."

Among the bulls introduced were several from Pennsylvania herds, including those of J. Mowery Frey, Jr., Willow Street; Kenneth Mowry, Roaring Springs; and Jim High, Lancaster.

A few herds from Lancaster Farming's prime coverage area were represented at the Expo, where more than \$35,000 of prize money was being offered. Two of the more prominent herds were those of John Rinehart, Littlestown, Pa., and Kennard Henley, Cochranville, Pa.

George Blaska, president of the World Dairy Expo, noted that this - the tenth anniversary - was the biggest and best Dairy Expo to take place at the modern facilities of the Dane County Exposition Center. A dairy farmer himself, he pointed out that this year's cattle also represented a higher quality of animals than ever before. The Expo hosted the National Guernsey Show and three Central National events.

Filled with commercial exhibits, as is common at most fairs and agricultural shows today, Blaska revealed that \$71,000 worth of space was sold. In addition there was an entry fee of \$12 for each head of cattle.

With 1300 head entered in the big event, it was nearly 500 short of the number of bovines entered at the Pennsylvania All-American the week before. The crowds, however, appeared to be equal in size, and possibly even bigger.

# THERMA-STOR

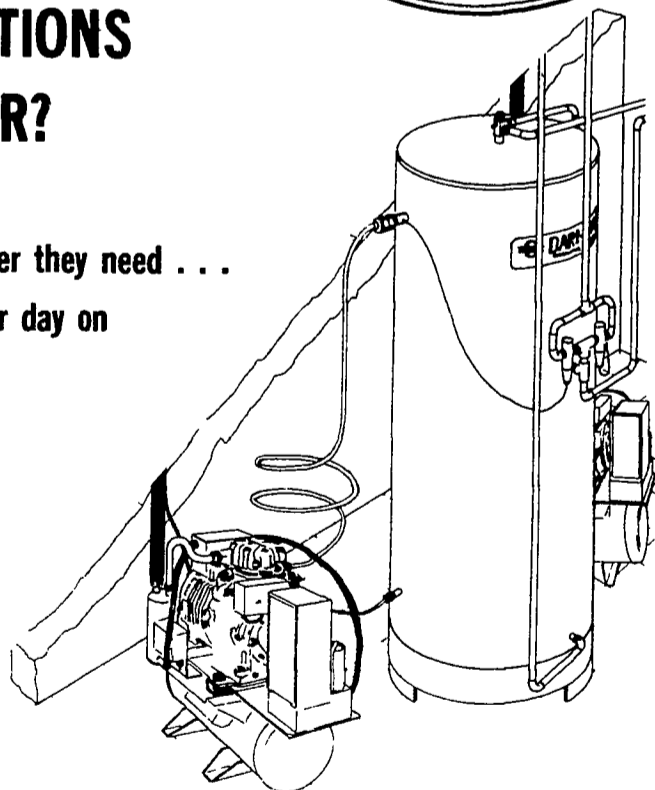


## WHY ARE DAIRY OPERATIONS BUYING THERMA-STOR?

Because they get all the FREE hot water they need . . . plus they SAVE from \$2.00 to \$4.50 per day on electric kilowatt savings.

GET THE FULL DETAILS FROM US . . .

All Information Is Free!



### USED BULK MILK TANKS

600 Gal. Sunset	300 Gal. Jamesway	D2-500 Gal. Girton
500 Gal. Mojonner	400 Gal. Jamesway	300 Gal. Girton
600 Gal. Mojonner	300 Gal. Mueller	D2-1000 Gal. Girton

## SHENK'S FARM SERVICE

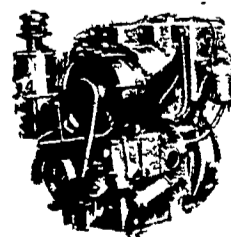
Phone (717) 626-1151  
or after 5 - Titus Burkholder  
717-859-1620

501 E. Woods Drive, Lititz, PA. 17543

Answering Service (717) 733-1224

### READ

LANCASTER FARMING  
FOR FULL  
MARKET REPORTS



SLANZI DIESEL  
Also Good Used  
Diesel Engines

WE CARRY  
CONKLIN PRODUCTS

Call Horning's Warehouse 717-354-7792

or

Amos Smucker 717-768-3996  
If No Answer Call 717-354-4374

Diesel & Gas

Sales & Service

SMUCKER'S ENGINE SHOP

RD1, Gordonville, PA 17529