

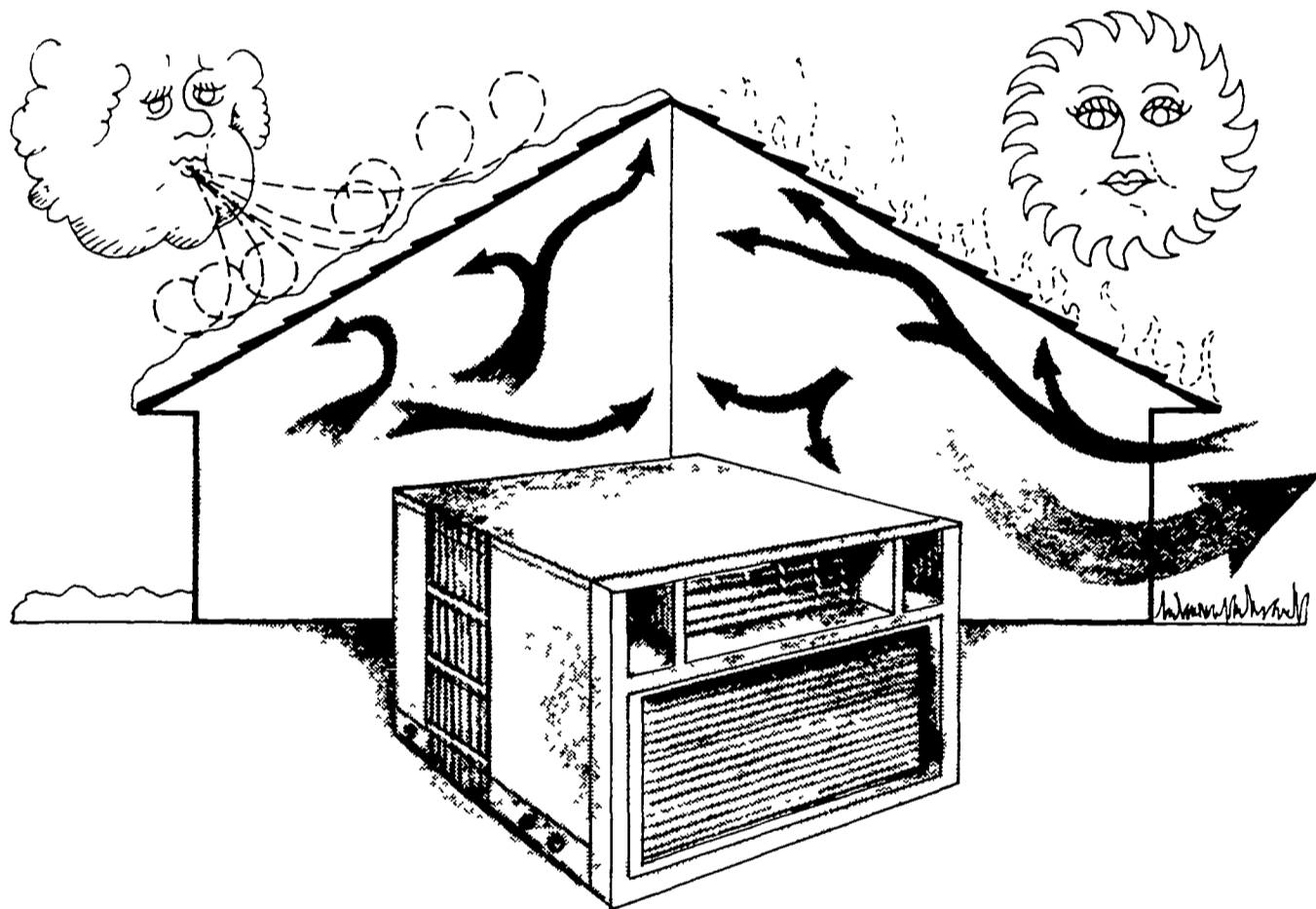


Here's how to weigh your dog or cat. Step on the scale with the animal in your arms. Then weigh yourself alone. The difference is the pet's weight.

A New Concept In Home Building...

for people planning to purchase an electrically heated home

Saving energy and money is important these days and will be even more important in the future. That's why PP&L is introducing the "Energy Efficient Home Program." Working with participating builders, PP&L has established standards of home construction for such things as insulation and sheathing, windows and doors, water heating, ventilation, plus home heating and cooling which includes the modern electric heat pump.



Heating and Cooling in one efficient and compact unit

Chances are, you've heard about heat pumps lately. And for good reason. In cold weather this unique system actually "extracts heat" from outside air to heat your home. In summer, the process is reversed and heat is "pumped" from inside your home to cool it. The result? Clean, quiet and dependable comfort, year-round.

Installing a heat pump and air distribution system today will provide you with many options for the future, too. For example, solar

energy equipment or a fuel-fired furnace can be combined with the heat pump to expand your future energy options and help keep your heating costs at a minimum.

That's why, if you're thinking of a new electrically heated home, it'll pay you to look for one that qualifies for the Energy-Efficient Home Award. It's your assurance that you'll be getting the most practical energy-saving features in home building today.



If your builder is not familiar with the requirements of an Energy Efficient Home, call PP&L.

Ask for a residential consultant who can supply you with materials and equipment specifications and builder information.

PP&L

Ida's Notebook



Ida Risser

The changing of the seasons brings with it a job which I dislike. I've just been on the attic to sort through the garment bags and pick out wearable winter clothes. Are the coats and jackets large enough for another winter? Which ones show signs of wear but can be used for barn work? Are others good enough for our fall clothing drive at church?

Each year I take armfuls of clothes to church and wonder where they come from as I buy very few. The answer is that friends have been generous in sharing garments with us. We hope that others will appreciate what they receive.

There are a few pleasant moments entailed in this job. One is the memories that come rushing back as one

finds a wedding suit, a maternity dress, or a child's first snow suit. It is even possible to find a blouse, just like the one you planned to buy, among your daughters' discarded college wardrobe. So once again the tedious job of sorting and storing clothes is finished and we go on to other work.

xxx

This year I won't have to pick up as many black walnuts as previously because some little boys did the job for me. You see, this summer my husband discovered a large area of corn tramped down as they threw sticks into the tree to bring down green walnuts to use as ammunition in their big slingshots. Pity the animals that live nearby.

Director named

COLLEGE PARK, Md. - The Board of Regents last month (Sept. 24) approved the appointment of Dr. W. Lamar Harris as director of the Maryland Agricultural Experiment Station, a research unit of the University of Maryland at College Park. The appointment will be effective on Oct. 18.

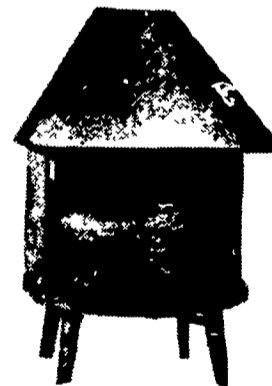
Dr. Harris becomes the eighth director since the

Maryland Agricultural Experiment Station was established on the College Park campus in 1888. He is a professor of agricultural engineering in the Division of Agricultural and Life Sciences, served as chairman of that department since June 21, 1974, and was acting chairman for almost two years previous to that appointment.

Due to impressive fuel economy, Jøtul is an investment that can pay for itself over the first winter.



Economical round-the-clock heating with one of Jøtul's cast iron woodburning stoves!



NO. 6 COMBI-FIRE
The largest of the Combi-fires has doors which slide open and disappear in seconds to convert to a fireplace.

NO. 507 COAL BURNER

Also burns coke, wood, or peat. Design assures complete combustion of hot gases, giving exceptional heating capacity on very little fuel.



- Many Models to Choose From
- Exceptionally Long Burning Time

- Practical and efficient
- Lasts a lifetime

- Simple draft and temp control

Showroom at
STILLWATER POND

Off Rt. 501 between
Brickerville and Schaefferstown

Ph. 717-949-3002