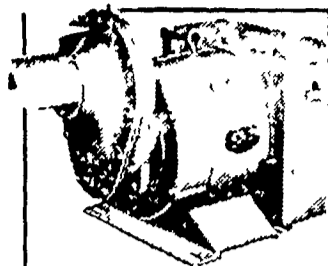


Farm Equipment



Protects Your Farm Against Power Failure

Your profits go down when power goes off! Let us show you how you can protect your family and farm from costly annoying power outages by leasing or buying a Winpower alternator.



MARVIN J. HORST

Dairy Equipment and Amana Appliances
R D #1 (Iona)
Lebanon, PA

Phone 717/272-0871
Located on Route 897 between Schaefferstown and Lebanon over 30 years in business at same place

- New 40'6" New Idea PTO Transport **SOLD** \$825.00
- New 45'6" New Idea PTO Transport Auger \$875.00
- New 45'8" New Idea PTO Transport Auger \$1095.00
- While Supply Lasts

Used 710 N.I. Combine
Used Hesston Stakhand No. 10

Used 12 ft. Brillion Packer w-transport
Used Brillion Pulvimulchers

Used No. 314 New Idea Sheller

Used 319-322 New Idea Mtd. Corn Picker, very good cond.

Used N.H. Corn Picker, 2-row narrow w-8 roll husking bed.

Used J.D. Grain Drill.
Used N.I. 270 cut-ditioner

New Gehl Blender Box

New Gehl 600 Harvester, 1000 RPM w-hyd. Sharpener and 2-row narrow corn head. \$6250

Kilbros. Gravity Bins
New Glencoe Soil Savers, 7 tooth
Good selection of used Manure spreaders

New Brillion & Bush Hog Chisel Plows
New Idea Corn Pickers and Shellers in Stock.
New Corn Cribs in Stock

Waiver of Finance on New Hesston and New Idea Hay Equipment til May 1, 1977

UMBERGER'S MILL

New Idea, Gehl, Hesston & Brillion Dealers.
RD4, Lebanon (Fontana)
Phone: 717-867-5161

Farm Equipment

For Sale - Used Int. 2 ME 2 row mounted corn picker \$75. Call 215-683-3998

Horse drawn equipment - tedder and dump rake. Ph: 201-832-2214 before 9 A. M. or after 6 P.M.

GEO. V. SEIPLE & SON

R.F.D. No. 2, Van Buren Road, Easton, PA 18042
Phone 215-258-7146

Sulphate Of Ammonia 21% N.

Per Ton, Bulk, F.O.B. Bethlehem, Pa. and Johnstown, PA

\$38.00

★ FOR PROTECTION AGAINST HIGHER PRICES . . . BUY NOW!

We have 1 used John Deere Combine, Model 105 corn special with 6 row narrow cornhead & 13 ft. platform!

Call Now . . .

* Price Subject To Change Without Notice

NEW FARM EQUIPMENT



- 990 9' Mower Conditioner..... \$3995
- 650 Field Harvester w-2-row cornhead... \$4695
- No 8 Field Flail Harvester..... \$2895
- 6 Ton Elec. Wheel Wagon..... \$395

USED EQUIPMENT

- 1954 Super MTA with P.S..... \$2395
- Farmall Cub with Reel Mower..... \$1599
- Farmall Cub with Hand Lift..... \$900
- 550 Field Harvester with 2 Row Pickup..... \$2195
- Several Grain Drills..... From \$395 up
- No. 40 Blower with Pipe..... \$95
- NH Auger Blower..... \$95
- MF 510 Combine with 13 ft. Grain and 4 Row Cornhead..... \$16,500



SCHOENECK INTERNATIONAL EQUIP.

Oakwood Lane at Rt 873 Schnecksville, PA
[215] 437 4813 or [215] 767-3806



Nothing runs like a Deere

USED FARM EQUIPMENT

- J.D. 3020 Tractor
- J.D. 4020 Tractor
- Massey Ferguson 65
- Ford 5000 Tractor
- J.D. 38 Forage Harvester
- N.H. 818 Harvester w-corn head
- J.D. 227 corn picker for 2 cyl. Tractors.
- J.D. 237 corn picker in good cond.
- N.H. 511 spreader
- Case 675 SP Windrower
- Fox Chopper
- Souders Loader
- Int. 711 Rotary chopper
- M.F. Baler w-Thrower
- Case Baler w-Thrower
- Int. 46 Baler
- J.D. 14T Baler
- J.D. 24T Baler w-ejector
- N.H. 460 Haybine
- (2) J.D. 216 Forage Wagon
- Grove Hyd. Forage Wagon
- Used Vacuum Supplies

NEW FARM EQUIPMENT

- J.D. 2040 Tractor
- J.D. 500 Baler
- J.D. 336 Baler
- J.D. 1209 mower conditioner.
- J.D. 170 Demo. Skid Loader
- J.D. 5200 Forage Harvester
- N.H. 512, 518 & 790 Spreaders
- N.H. 477 Haybines
- N.H. 850 Baler
- N.H. 354 & 357 Grinder Mixer
- 770, 717, & 707 Harvesters
- J.D. 300 Husker
- Richardton High Dump Wagon
- Ag-Tex Low volume orchard & field sprayers
- Perry Orchard Mowers

1973 Int. Truck, Stake body w-racks in good condition

CLUGSTON IMPLEMENT INC.



MUELLER
Bulk Milk Coolers

Chambersburg, PA 17201
1 Block off I-81 Exit 8
Phone 717-263-4103

SPERRY
NEW HOLLAND

Farm Equipment



EAGLE MACHINERY COMPANY

Route 100, Eagle, PA

NEW EQUIPMENT IN STOCK

- 1 & 2 Bottom, 3 pt Plows
- 3 Pt Disk Harrow and Spring Tooth Harrows
- (6) New Wagons, all sizes
- Glenco 12 1/2 ft Field Cultivator Save \$300.
- Glenco Chisel Plow, Pull 10 Tooth Save \$400.
- White 4-25L Bobcat Loader \$3200.
- White 244 Fork Lift 14', 200 hrs. \$6000
- 50 Bolens, Wheel Horse, and Ariens Riding Tractors and Mowers in Stock

USED EQUIPMENT

Oliver 550 Tractor

SAVE

NOTICE

SAVE

We have cancelled our White Farm Contract. \$100,000. worth of Oliver White Parts.

- Short Blocks • Plow Bottoms • Complete Coulters • Radiators • Bull Gears • Rear Housings • Corn Planter Boxes.

SAVE UP TO 50 PERCENT ON THESE PARTS.



Nothing runs like a Deere

USED EQUIPMENT IN STOCK

TRACTORS

- J.D. 4630, Like New Low Hrs
- (1) J.D. 2030 Diesel SOLD
- David Brown 995 w/Case Loader
- Farmall M

ROLLER HARROW

- J.D. 930 12' 3 pt
- J.D. 925 12'

PLOWS

- (1) J.D. F145 5'16"
- J.D. F120 3-14" SOLD

COMBINES

- J.D. 105 w 434 Corn Head SOLD

DISK HARROWS

- Miller 18 ft hyd fold
- J.D. BWA 15'

- J.D. 1630 11'7" - Like New SOLD

AC 13 ft SOLD

GRAIN DRILL

- IH 17x7 SOLD

CHISEL PLOW

- 1600 Series 14'

CORN HEADS

- (2) J.D. 444



CFH, INC.

EAST MAIN — CECILTON, MD. 21913

1-301-275-2195



NEW EQUIPMENT

SPECIALS

NEW IDEA SUPERPICKERS!!

- (2) 323 1-Row Superpicker w-16 roll husk bed - \$3390.00
- (2) 324 2-Row Superpicker w-12 roll husk bed - \$6990.00
- (1) 314 Sheller \$2100.00
- (1) 329 Super Sheller - \$2910.00
- Also - New Idea Hay Equipment
- (1) 7 ft. Cut-ditioner - \$2785.00
- (1) 290 Mow-ditioner, 9 ft. - \$2990.00
- (1) 303 Forage Box - \$2750.00

MCCURDY GRAIN BOXES AVAILABLE

ROBINSON BROTHERS

Delta, PA 17314
Off Rt. 74 at Mason-Dixon Line
Sales - Charles Robinson
Dave Robinson
PH: 1-717-456-5215

See Us For The Best Parts Availability For New Idea Equipment!!!

Farm Equipment

NEW IN STOCK

- Glenco, Athens & Lentz Chisel Plows
- Heavy duty disc harrows
- Disc harrows for horses
- Gehl C.B. 800 harvester
- Gehl FB99 blower
- Gehl 95 MX Grinder mixer
- Gehl 72 Flail chopper
- Vicon Fertilizer spreaders, 900 lbs., 1400 lb. & 2400 lb., 3 point or trailer type for horses
- Hawk Bilt Manure Spreader
- Ford Industrial motors

ZOOK'S FARM STORE

Box 222 RD2
Honeybrook, PA 19344



USED EQUIPMENT

- (3) Oliver 13-7 Grain Drill, #26 high wheel, reconditioned
- Fox 1000 Harvester, elec knife sharpener w/2 row wide corn head \$3,000
- Fox Super 6 Harvester w/1-row corn head \$1500
- Gehl FH 84 Harvester w/1-row corn head \$1250
- Fox 2CA 2-row wide corn head, like new \$1300
- White 3242 2B 16" 3 pt Plow
- Oliver 565 4B 14" Cush Trip Semi-mtd Plow
- Oliver 565 4B 16" Cush Trip Semi-mtd Plow
- Oliver 568 5B 16" Hyd Reset Semi-mtd. Plow

NEW EQUIPMENT

- Fox 2100 Harvester, 540 RPM w/1-row corn head (belt or chain)
- Fox 2200 Harvester, 540 RPM, elec knife sharpener, w/2-row corn head (belt or chain)
- Fox 2300 Harvester, 1000 RPM, elec knife sharpener w/2-row corn head (Belt or chain)
- Fox 656 Forage Blower
- White 2-70 Diesel Tractor
- White 2-85 Diesel Tractor
- White 2-150 Diesel Tractor w/cab & air cond
- White 252 Disc Harrow 12'8"
- White 253 Disc Harrow 11' 6"
- White 263 Disc Harrow 12' 2"
- White 283 Sp Harrow 12' 6"
- Bush Hog 1432 Disc Harrow 9'
- Bush Hog 432 Disc Harrow 10'3"
- Bush Hog 1438 Disc Harrow 13' 10"
- Bush Hog 5' 3 pt Chisel Plow
- Bush Hog 8' 3 pt Chisel Plow
- Bush Hog 10' 3 pt Chisel Plow
- Brillion 7' 3 pt Chisel Plow
- Brillion 9' 3 pt Chisel Plow

USED TRACTORS

- Oliver 77 Gas
- Oliver 880 Gas, PS. 3 pt hitch,
- Oliver 1250 Gas Utility, 3 pt

USED TRACTOR ENGINES

- Oliver Super 77 Dsl
- Oliver 770 Dsl
- Oliver 770 Gas

SPEEDY BAR-LOK CORN CRIBS
1200 Bushel
In Stock

FARMERSVILLE EQUIPMENT, INC.

RD2, Ephrata, Pa.
717-354-4271

Store Hours:
Daily 7:30-5:30
Sat 7:30-3:00