

Lancaster COUNTY DHIA MONTHLY REPORT

A registered Holstein cow owned by Curtis E. Akers, Quarryville, completed the highest 305 day lactation "Vickie" produced 1,046 pounds of butterfat, 23,849 pounds of milk, with a 4.4 percent test. Second high lactation was completed by a Holstein cow owned by Lester T. Weaver, Quarryville. She produced 21,469 pounds of milk, 963 pounds of butterfat with a 4.5 percent test.

FIRST 305 DAYS OF LACTATION

WITH 650 OR MORE POUNDS OF BUTTERFAT.

OWNER	COW'S NAME	BREED	AGE	DAYS IN MILK	LBS MILK	FAT	PRS FAT
Curtis E. Akers	Vickie	RH	7-2	305	23,849	4.4	1046
	Jenette	RH	3-10	305	16,935	3.9	656
Lester M. Weaver	57C	GrH	4-11	305	21,469	4.5	963
	70A	GrH	9-6	305	20,686	4.4	919
	44B	RH	11-3	305	18,293	4.1	742
	6B	GrH	4-0	282	16,907	3.9	656
	68A	RH	11-2	305	16,798	3.9	653
Dan S. Stoltzfus	Ronda	RH	5-2	297	21,653	4.4	949
	May	RH	4-11	305	21,729	3.8	816
	Flossie	RH	7-0	294	19,941	4.0	795
	Bevie	RH	5-11	305	20,046	3.7	743
	Donna	RH	5-3	305	17,924	3.9	691
	Holly	RH	3-9	305	17,877	3.7	662
Robert L. Shelly	Vera	RH	6-11	305	20,927	4.4	915
	Edna	RH	8-6	305	18,561	4.2	787
	Betty	RH	5-2	305	18,266	4.0	728
Robert F. & Joan B. Book	Eileen	RH	6-6	305	20,963	4.4	913
	Crystal	RH	7-0	305	20,657	3.9	799
	Marian	RH	5-2	285	20,478	3.6	743
	Kindra	RH	5-3	293	18,076	4.1	740
	Sweetie	RH	2-7	305	16,512	4.3	703
	Marilyn	RH	5-0	305	20,951	3.3	697
	Roselyn	RH	2-0	305	14,601	4.5	661
J. Mowery Frey Jr.	Carmela	RH	8-0	305	21,133	4.2	896
	Hattie	RH	3-0	305	16,870	4.1	693
J. Henry Stoltzfus	Nan	RH	5-3	305	24,614	3.6	874
	7	GrH	8-0	305	19,400	3.6	699
	Ethel	RH	7-7	305	18,758	3.6	671
Fred Crider	Jewel	RG	4-6	305	16,307	5.3	859
Earl Smoker	Holly	RH	4-10	305	19,804	4.3	856
	Earla	RH	5-11	305	18,426	4.3	784

John Omar Stoltzfus	Mary	RH	7-11	305	22,725	3.7	851
	Beck	RH	5-6	302	18,932	4.0	757
	Hilda	RH	3-3	305	17,258	4.0	689
Kenneth I. Beller	Edna	RH	4-3	305	22,328	3.8	850
Jay C. Garber	I. Jeviol	RH	4-5	305	22,339	3.8	839
	Mhcbart	RH	3-1	305	18,540	4.3	804
	Ifetty	RH	6-11	295	17,814	4.2	743
Paul W. Zimmerman	10	RH	5-11	305	23,639	3.5	834
Clyde W. Martin	Leta	RH	4-7	305	21,373	3.9	834
	Lena	RH	6-5	290	17,744	4.1	724
	Tina	RH	3-2	304	14,988	4.6	690
	Maude	RH	3-1	305	19,364	3.5	678
	Dotty	RH	7-10	305	21,356	3.1	669
	Daisy	RH	3-2	305	17,774	3.8	668
	Wanda	RH	4-8	305	18,860	3.5	659
Paul B. Zimmerman	JoAnn	RH	8-4	305	18,422	4.5	833
Ben K. Stoltzfus	Vonnie	RH	6-7	305	23,187	3.6	830
	Bell	RH	6-8	305	19,581	4.2	827
	Elaune	GrH	5-8	305	19,367	3.8	733
Abram & John Barley	186	GrH	7-6	290	21,411	3.8	824

349	GrH	4-8	305	20,805	3.8	794	
345	GrH	4-4	298	15,267	4.8	704	
90	RH	2-11	305	17,819	3.8	680	
254	RH	5-1	305	20,567	3.3	674	
284	RH	3-2	305	18,570	3.6	671	
295	RH	3-2	305	18,133	3.7	671	
112	GrH	3-0	305	19,880	3.3	654	
Calvin D. Beller	Millie	RH	4-11	305	21,663	3.8	823
	Mary	RH	4-11	305	21,149	3.2	685
Henry & Paul Martin	Babe	RH	3-8	305	19,241	4.3	822

(Continued on Page 87)

USED HARVESTORE FOR SALE

2580 WITH GOLIATH

CALL (717) 354-4051



James Willis
Shippensburg, PA
Unit 30 Pro. Tech.
since 1965

I provide service with Atlantic Genetic Power Profit-Maker sires.



15H160 Keystone FLEETFOOT

Good Plus (83)

Sire: Paclamar
Bootmaker — EX
(94) & GM
Dam: Keystone
Sparkling Fleece
— EX

USDA [5/76] — 62 Daughters in 51 Herds Average 14,736M 3.53% 520F
Predicted Difference [71% rpt.] +576M +\$33 +3F
Type: [no official H-FA summary to date]



15H171 Minnechaug Glenafton HERCULES

Very Good (88)
& Gold Medal;
Prod. Qual.
(May/76)

Sire: Glenafton Rag
Apple Charmer —
EX & GM
Dam: Minnechaug
Vee Tony — EX-
2E & GM

USDA [5/76] — 51 Daughters in 9 Herds Average 19,190M 3.58% 687F
Predicted Difference [53% rpt.] +593M +\$37 +6F
Type: 43 Classified Daus. Ave. 80.8 [act.]; 82.0 [age-adj.]

These sires - and many more - are available daily from all of our Professional Service Technicians.



Atlantic

LIVESTOCK BREEDERS COOPERATIVE
SERVICES

Member - NAL Affiliated Breeders

24-Hour Toll-Free Phone Nos. for Service

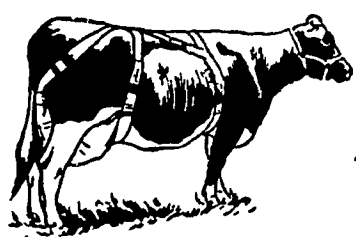
Pennsylvania 800-732-0391

Lancaster 569-0411

Del. & Md. 800-233-0216



**BAYMIX lets you
sell your milk
while you worm**



SUPPORT YOUR
COWS!
WITH A
**TAMM UDDER
SUPPORT**

* CATTLE & HOG MINERALS
* CUSTOM CANVASS WORK

AARON S. GROFF & SON

FARM & DAIRY STORE

RD3, Ephrata, PA 17522 (Hinkletown) Phone (717) 354-4631
Store Hours 7 A.M. to 9 P.M.
Closed Tues., Wed. & Sat. at 5.30 P.M.