

Jeff Martin

(Continued from Page 1)

Linda High Lancaster, who has been showing beef animals for seven years. She said it takes a lot of practice before the show so the animal will do exactly what you want it to do. You must lead it a lot it knows what you're doing and knows what to expect.

In commenting on showmanship Dobrosky said he placed Linda over second place Jeff Martin because she was more relaxed and had a smile. As a result, she looked like she was enjoying it while being interested in her animal.

Dobrosky offered some general advice to showmen, saying 4-H'ers shouldn't forget to use the combs they carry. He said animals should be shown as safely as possible, and added, "Don't ever turn your back to a steer - you can lose the animal that way." He said in his opinion, showmen should not change the halter from their left hand to their right hand, but should simply back away and look at the judge as he passes to the front of the animal. Safety, Dobrosky said, is the most important factor.

Kathy Martin, New Holland R3, was grand champion fitter, with Dobrosky characterizing her

animal as being pretty uniform and exceptionally clean.

(Other show results are Crossbred Steers

1 Jeff Martin, New Holland
2 Linda High Lancaster, 3 Donna Eberly, East Earl, 4 Tami Groff, New Holland 5 Joanne Groff, Lancaster, 6 Glenn Yoder, Morgantown 7 Gerald Eberly, East Earl, 8 Audrey Hoover Gap, 9 Michael Martin, East Earl, 10 Randy Martin, East Earl

Angus
1 Tim Groff, New Holland, 2 Randy Musselman, New Holland 3 Doug High, Paradise, 4 Vickie Bare, Witmer, 5 Dave Bowman, Ronks, 6 Don Bowman, Ronks, 7 Merle Groff, Lancaster

Herefords
1 Dale L. Hershey, Ronks, 2 Kathy Martin, New Holland, 3 Phyllis Witmer, New Holland, 4 Robert Groff, Leola, 5 Kathy Denlinger, Gap, 6 Bob Weaver, East Earl, 7 Jane Groff, Leola, 8 Billy Martin, East Earl.

Showmanship
1. Linda High, 2 Jeff Martin, 3. Vicki Bare, 4. Gerald Eberly.

Fitting
1. Kathy Martin, 2. Dale Hershey, 3. Jeff Martin, 4. Glenn Yoder

BEEF SALE
Later in the afternoon at

the beef sale Jeff Martin received a near record \$2 for his grand champion crossbred beef on the bid of Stoltzfus Meats. Intercourse Contenders in the championship bidding were Bob Frame of Vintage Sales Stables and H D Matz.

With his champion steer weighing 1125 pounds the bidding left Jeff Martin with \$2,270 for his efforts in raising the 4-H project.

The reserve grand champion steer, owned by Dale L. Hershey sold for 65 cents per pound and was purchased by Terre Hill Silos. It weighed 1090 pounds.

Total value of sale animals was \$16,563.65 with an average of 53.26 cents without the champion. Total poundage was 27,975.

Among those purchasing 4-H animals at the sale were Earl Sauder Feed Mill, New Holland Supply Company, Guernsey Restaurant, Victor F. Weaver, Inc., Weaver and Martin Trucking, Carl Veneta, H D Matz, Lancaster Silo Company, Larry Goetz Trucking, Robert Frame, Steller and Martin Auctioneers, John F. Martin Meats, Gale Sensenig, Frank Fillipo, Edgar Black, Horning Farm Agency, New Holland Sales Barns, Far-



Jeff Martin (r) poses with his championship steer and the purchasers who paid \$200 a pound

From left are Amos Stoltzfus, Ike Stoltzfus, and Ken Stoltzfus

mers Bank, and John Yoder

In addition to providing the facilities at no cost to the 4-H'ers, the New Holland Sales Barns also donated \$5 to each participant in the show and sale.

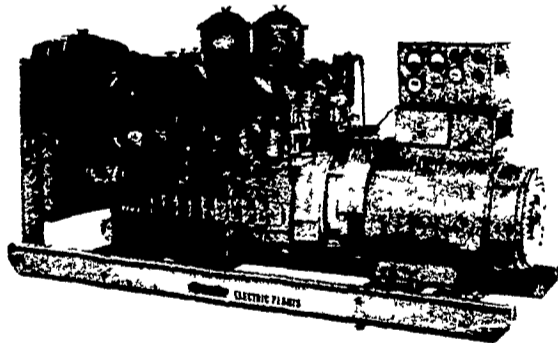
Know Where the Activities Will Be?

Read

the Farm Women Calendar.

Electric Generating Systems

Built to Your Specifications
Manual or Automatic
L. P. Gas - Diesel - Gasoline



— USED —

100 H.P. GE motor, 3 ph. 1770 RPM, ball bearing, drip proof \$500.

15 KW 18.75 KVA Continental PTO Gen.. ph. 1, 540 RPM drive, trailer \$900.

25 KW 31.2 KVA Gen. Set, P&H 2 cyl. dsl., 1200 RPM, 1 ph., skid \$2500.

28 KW 35 KVA Gen. set, 4-71 GM Dsl., 1200 RPM, 3 ph., skid, recently rebuilt, \$4000.

30 KW 37.5 KVA Gen Set, IH 4 cyl. Dsl., 1200 RPM, 3 ph., skid \$1500

50 KW 62.5 KVA Gen Set, IH 6 cyl. Dsl, 1200 RPM, 3 ph., skid \$2500.

50 KW 62.5 KVA Gen Set, Caterpillar 4 cyl Dsl., 900 RPM, 3 ph., 4 wheel trailer, \$3500.

All 3 phase units can be used as single phase units.

Sales - Service

Martin Electric Plants

Isaac W. Martin, Owner

Pleasant Valley Rd., RD2
Ephrata, PA (717) 733-7968

STOLTZFUS MEAT MARKET

ATTENTION FARMERS
CUSTOM BUTCHERING
OUR SPECIALTY

—FRESH BEEF AND PORK—
OUR OWN HOME MADE
SCRAPPLE & FRESH SAUSAGE

Bacon and Country Cured Hams
Orders taken for freezer Meats

PH. 768-3941

Directions: 1 block east of Intercourse
on Rt. 772 - Newport Road

STORE HOURS	THURS.	FRI.	SAT.
	9-5	9-8	9-5



WINTERIZE
YOUR FARM
MACHINERY

with

★ Synthetic Oil ★ Synthetic Diesel Oil

★ Farm Hydraulic Transmission Oil

★ Hydraulic Fluid - Trucklifts, Forklifts

Cold Weather - Easy Flow

★ Gear Lube

★ 2-cycle Oil - Mixes at a rate of 100 to 1

★ Multi-Purpose Grease - All Weather, Protects
from - 50 degrees F up to 350 degrees F.

"We're a Synthetic Oil . . .
And We're Many Lubricants"

SEE HIESTAND DISTRIBUTORS

ROOTS SALES BOOTH — EVERY TUESDAY

Or Call 717-426-3286
Write

HIESTAND DISTRIBUTORS, INC.

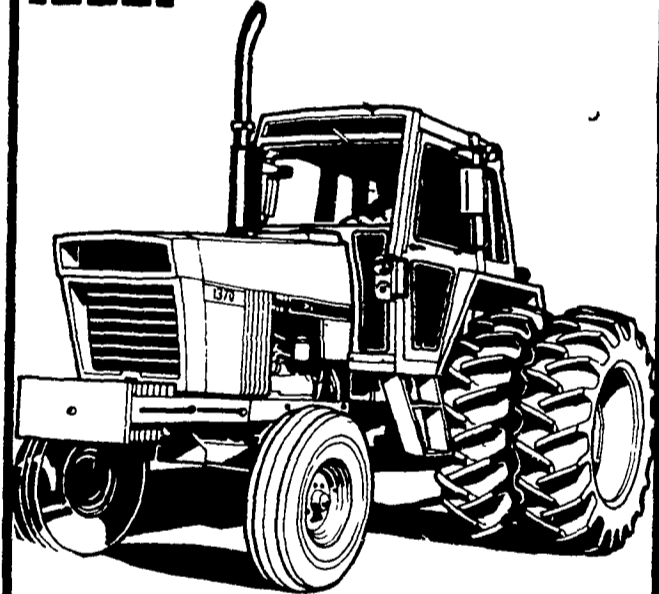
Box 96, Marietta, PA 17547

USED HARVESTORE

FOR SALE
2027-1750

CALL (717) 354-4051

CASE THE FRONT RUNNER



CASE 156 PTO HP 1370 AGRI KING

- PARTS
- SERVICE
- RECONDITIONED TRACTORS
- CONVENIENT FINANCING

- BIG 504 TURBO-CUBE ENGINE
- SELF-CLEANING AIR INDUCTION SYSTEM
- OIL SPRAY PISTON COOLING SYSTEM
- 3 ON THE GO POWER SHIFTS IN EACH OF 4 RANGES
- CASE ENVIRONMENT CONTROL — WITH OUTSIDE CAB AIR FILTER — NO MESS INSIDE

• TRACTOR CAN BE SPLIT

WITHOUT REMOVING CAB

• CONSOLE CONTROL

THESE FEATURES SINCE 1970

In Stock Ready For Delivery

Priced under **\$22,900.00**

Received just before \$1000.00 price increase

Call us for a Free Demonstration
No Obligation

SALES & SERVICE

BINKLEY & HURST BROS.

133 Rothsville Station Rd.

Lititz, PA 17543

Phone (717) 626-4705

