

# Public Sales Register

SAT. OCT. 9 - Harford, Pa. Susq. Co. County Club Sale Al Smith, Pedigrees, M L Bunnell, Auctioneer, Springville, Pa.

SAT. OCT 9 - 12 30 P M Complete Dispersal of 46 Holsteins, Machinery and Produce located 1st Blacktop off Rt. 371, 1 mile East of

Rileyville Corners Rileyville is about 10 miles from Honesdale, Pa., or 7 miles from Damascus (Norman Dennis farm) Arrows Terms by Truman Kumble, owner, Jim Adriance, Auctioneer, Montrose, Pa

Farm Machinery. Located in Clinton Co., Nittany Valley, 2 miles East of Rote, Pa, turn North, travel 1/2 mile to Meadow Farms. Sale by Meadow Farms, Inc Mark Glick Auctioneer

MON OCT. 11 - 10:00 A M Public Auction of Machinery, Goods and Tools. To be held on the premises at Railroad and Peach Streets, Kutztown, Pa. North on Railroad Street. Sale by Wilmer F. Beck, Beck's Feed & Grain Inc. Melvin and Raymond Hartzel, Auctioneers

TUES. OCT. 12 - 12:30 P.M. Public Sale of Valuable

TUES. OCT. 12 - 1 P M Special Graded Feeder Pig Sale at the Lancaster Stockyards, Inc., Lancaster, Penna.

THURS EVE., OCT 14 - 5 30 P.M. Public Sale of Farm Equipment located along Greystone Road, turn West off Route 72 at light in East Petersburg on Greystone Road 1 1/2 miles. Sale by Erich R. and Yvonne Toews; C. H. Wolgemuth, Auctioneer

THURS OCT. 14 - 7 P M 2nd Yearling Sale, 1200 Head to be held at Fauquier Livestock Exchange, Marshall, Virginia

THURS OCT 14 - 12 Noon Jernelle Holstein Dispersal Located in Cumberland Co., about 3 miles east of Boiling Springs, Pa., on Route 174, then right to cross road, then right again Signs posted Paul W. Chronister, owner Ralph Horst & Art Kling, Auctioneers

FRI. OCT 15 - 1 P M. Winchester, Virginia - Feeder Calf and Yearling Sale to be held at the Farmers Livestock Exchange, Inc. located 1 1/2 miles west of Winchester on U.S. Route 50.

FRI. OCT. 15 - 12:30 Public Sale of Registered Holstein Dispersal located 4 miles west of New Holland, Pa., 2 miles North of Rt. 23, take Groffdale road then onto Wissler Road, farm is near Voganville. 55 cows and heifers, vacc., tested for interstate, '75 DHIA average 14,671M, 580F, 4.0 per cent, Atlantic Breeding. Terms by Samuel M. Augsburg; Carl Diller and J. Everett Kreider, Auctioneers.

FRI. OCT. 15 - Dispersal Sale of 85 Grade Holsteins, all farm equipment, 5 miles North of Greencastle, Pa.

Elwood G Wingert, owner Ralph Horst and Edgar Stull, Auctioneers

FRI NIGHT OCT 15 - 7 30 P M DST Herd Dispersal of 100 Head Registered and High-Grade Holsteins at the Shady Lane Dairy Sales, 1/4 mile west of Quarryville off Oak Bottom Road Sale by Glenn D Fite, owner, Kersey Bradley and Everett Kreider, Auctioneers

FRI OCT 15 - 6 30 P M Feeder Cattle & Feeder Pig Sale To be held at Keister's Middleburg Auction Sales, Inc., Route 522, three miles East of Middleburg, 5 miles West of Selinsgrove Art Kling & Larry Long Auctioneers

FRI. OCT. 15 - Annual Dairy Cow Show and Sale at the Green Dragon Livestock Market, RD No. 3, Ephrata, Penna. Ribbons, Trophies and Prize Money will be awarded in four classes. Judging at 9:30 A.M. Sale at 12:00 Noon. Walter H Risser, Proprietor

FRI. OCT. 15 - 8 P.M. Nite Cow Sale at the Black & White Holstein Farm, Lancaster, Pa. across from the Comet Drive-In Theatre or 1/4 mile West of breeding unit. Charles C. Myers, owner; Abe Diffenbach, auctioneer; Henry Ketterin, Pedigrees; Park Myers, Sales Manager

## ANNUAL DAIRY COW SHOW AND SALE

at the Belleville Livestock Mkt., Belleville, PA

WEDNESDAY, OCT. 6, 1976

Show at 10:00 A.M. and Sale at 1:00 P.M.

All cows entered in the show must be consigned no later than 7:00 P.M. before sale. If you are in need of dairy replacements or breeding stock this has always been a top selection with a lot of Registered holsteins to select from.

BELLEVILLE LIVESTOCK MKT.

## PUBLIC SALE

THURS., OCT. 21, 1976  
12:30 P.M.

Located 3 miles southeast of Gap, Pa. 1/2 mile north of Route 41. Turn north at Smallwood's Flower Shop, off Route 41.

### COMPLETE HERD DISPERSAL OF GRADE HOLSTEINS

63 HEAD 63 HEAD

38 mature animals of which approximately 18 are due October, November, December. Balance in all stages of lactation. 7 heifers due this fall. 18 heifers, several bred, breeding age and younger. Owner sample: 1975 herd average, 13,800 M 650 F, records to 24,000 M 995 F. Mostly all home raised. 17 years A.B.C. and A.B.S. breeding. Foundation cows were registered animals.

IF YOU WANT SIZE AND PRODUCTION, PLAN TO ATTEND THIS SALE.  
Health charts. Pregnancy checked.

Terms by  
**ELIAS BOWELL**

Auctioneers: Lloyd Kreider  
Steve Petersheim — 215-869-2508

LUNCH AVAILABLE

## PUBLIC SALE

OF HOUSEHOLD GOODS, GUNS, TRACTOR, BUILDING MATERIALS, TOOLS.

SATURDAY, OCTOBER 9, 1976

10:30 A.M.

Locted 8 miles South of Lancaster, 1/2 mile West of Conestoga Center on Road to Safe Harbor.

Columbian coal and gas range; heatrolas, 6 plank bottom chairs; jelly cupboards; odd chairs; crocks; jugs; dishes; 2 pc. living room suite; spool bed.

Allis Chalmers model B tractor with plow, cultivator and blade; McCormick 20 disc harrow; spring harrow; horse plow; shovel harrow.

Guns - 16 ga. Winchester Model 12 pump; 300 Savage Model 99 takedown; single barrel shot gun 22 rifles.

Homelite chain saw, Black and Decker skill saw, like new; Compressor, saws, hand tools, garden tools, bolts, nails, old wooden wheelbarrow, lumber in various widths and lengths; insulation, 9x12 linoleum rugs, lots to numerous too mention.

Food by Safe Harbor Methodist Ladies.  
Not responsible for accidents sale day.  
Guns and tractor to be sold at 1:00 P.M.

Terms by  
**KATHRYN H. HARNISH**

Lloyd Wenger, Auctioneer  
717-464-2003

## SPECIAL NOTICE GILBERTS STORE

RD No. 1, WRIGHTSVILLE PA. AT LONG LEVEL

THURS. & FRIDAY  
1 P.M. TO 9 P.M.  
OPEN SATURDAY 10 A.M. TO 4 P.M.

# 30% OFF ON ENTIRE STORE STOCK.

Drive a little and save 30% on everything.

Come early for best selections.

All sales cash & final.

J. A. Gilbert Prop.

## PUBLIC SALE

VALUABLE FARM MACHINERY

TUESDAY, OCT. 12, 1976

At 12:30 P.M.

Located in Clinton Co., Nittany Valley, 2 miles East of Rote, Pa., turn North, travel 1/2 mile to Meadow Farms.

### MACHINERY

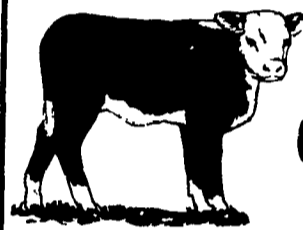
J.D. 4320 dsl. wide front tractor w-cab run 2400 hrs. and new rubber, J.D. no. 350-5 bottom 16 in. automatic reset plow, J.D. 2020 gas tractor w-hydro-stat shuttle reverser run 1640 hrs., J.D. no. 48 hyd. loader w-fork and bucket, I.H. no. 85 PTO portable mixer grinder, J.D. no. 40 manure spreader w-hyd. tail gate, Morige L.P. gas 275 bu. batch type PTO grain dryer, J.D. no. 1630 plow disk 11 ft., I.H. no. 10-15 disk grain drill, J.D. no. 1220-4 row corn planter w-insecticide hoppers, N.I. no. 325-2 row pull type corn picker w-sheller unit, N.I. no. 326 husking bed, J.D. no. 65 hopper blower PTO, N.H. 273 baler super sweep head, hyd. control thrower and floatation tires baled approx. 20,000 bales, N.H. no. 479 haybine w-floatation tires used 2 seasons, J.D. 3 pt. rake, J.D. hay fluffer, J.D. no. 428 elevator 34 ft. like new w-grain chutes, I.H. no. 76 combine PTO w-bin, N.H. heavy duty wagon 8 ply tires w-bale rack like new, 2 J.D. no. 216 self unloading wagons with adjustable hitches, N.H. and Grove wagons w-gravity grain beds, J.D. pickup head for no. 34 chopper, Skeleton 8 ft. bale elevator section, I.H. flail chopper for parts, Agway 3 1/2 H.P. roto-tiller, Cattle mineral feeder, Burdizzo Castrator, button dehorner, 1750 lbs. 10-20-10 corn starter fertilizer, bag of Tale Fescue grass seed, 2 bags mixed grass, and 125 bu. oats. No small items on the wagon; this will be a short, but good sale.

Don't be late!  
Terms - Cash

### MEADOW FARMS, INC.

R.D. No. 1, Mill Hall, Pa.  
Miles Clevensine, Agent  
Phone 814-383-2755

Mark Glick - Auctioneer  
Reedsville, Pa.



## 1976 FEEDER CATTLE & CALF SALES

SOUTH BRANCH STOCKYARDS, INC.

Moorefield, West Virginia  
Phone: (304) 538-6050,  
538-6600, or 257-7231

FRIDAY, OCT. 15 - 1000 HEAD GRADED CALVES

All Sales Start at 7:30 P.M.

KEEP IN MIND:

Fri., Oct. 29 - Clean-up Sale, all kinds - 1200 head  
Sales sponsored by South Branch Stockyards  
& W. Va. Dept. of Agriculture

## CONSIGNMENT SALE

WEDNESDAY, OCT. 6, 1976

AT 9:30 A.M.

Location: 1/2 mile North of Route 23 on North Maple Ave. in Leola, Lancaster Co., PA. Watch for Sale Sign.

LARGE VARIETY OF LUMBER  
150 SQUARES ALUMINUM SIDING & ROOFING (WHITE, GREEN, RED, GOLD & YELLOW)  
50 pcs. 3x6 14 ft.; 50 pcs. 4x8 18 and 20 ft.; 800 pcs. 2x6, all lengths; 400 pcs. 2x4 all lengths; 200 pcs. 2x10 10 and 12 ft.; 200 pcs. 2x3 9 ft., 125 pcs. 2x6 tongue and groove flooring; 1,000 board feet hardwood flooring; 10 pcs 12x12 various lengths, large lot of walnut and Red Wood lumber, some Red Wood fire damaged; 30 trusses; 100 pcs. 1/4" plywood; 200 pcs. 5/8" plywood; lot of 8, 16 and 20 common nails, new hinges and latches.

Tractors, Farm Machinery; Horse Drawn Implements; New Tools, Hardware, Building Materials, Hay and Straw.

We sell on Commission.

HAY SALE EVERY WEDNESDAY  
12:00 Noon by  
HARVEY Z. MARTIN

POSITIVELY NO  
HOUSEHOLD GOODS

**DAVID H. GOOD**  
717-656-9024

F. Snyder, R. Martin,  
C. H. Wolgemuth, C. Diller, J. Fry Aucts.

NEXT SALE WEDNESDAY, OCTOBER 20

NOT RESPONSIBLE FOR ACCIDENTS.