



Mr. and Mrs. Robert Sechrist, buyers for Hatfield Packing Company of Philadelphia, are shown with the grand champion market hog they purchased at the first annual FFA market hog sale held last week at the York Fair.

First hog sale held

YORK - The first FFA hog sale for York County was held here last Friday night at the York Fair. Forty-six hogs were sold, bringing an average of \$46.32 per hundredweight.

Selling the top animal was Leon Crowl of Airville, whose purebred Duroc commanded a price of \$1.25 per pound from the Hatfield Packing Company. Bidding for the Company was done by Mille Sechrist, wife of York County auctioneer and livestock market operator, Robert Sechrist. Crowl is a member of the Red Lion FFA Chapter.

Another Red Lion youth, Wayne Bankert, bagged the second highest price offered at the sale. His spotted Poland China fetched 70 cents per pound. Hatfield again did the buying, with Mrs. Sechrist doing the bidding.



Dairy prices announced

NEW YORK N.Y. A uniform price of \$10.22 per hundredweight (46.5 quart) for August milk deliveries to pool handlers under the New York New Jersey marketing orders was announced last week by Thomas A. Wilson, market administrator. The uniform price was \$9.63 in July 1976 and \$9.00 in August 1975.

The butterfat differential was 12.2 cents for each tenth of a pound of butterfat above or below 3.5 per cent. The seasonal incentive fund (Louisville Plan) returned \$2,857,270.33 to the August 1976 pool. This added \$3.77

per hundredweight to producer prices.

Receipts from dairy producers totaled 757,233,283 pounds, 0.8 per cent or 3,730,914 pounds more than in August 1975. Wilson reported handlers utilized 370,332,008 pounds of these receipts or 48.9 per cent for fluid milk products (Class I). In August 1975 the Class I utilization percentage was 50.2. For August 1976, handlers paid \$10.72 for Class I milk compared with \$9.51 a year ago.

Wilson stated that receipts on bulk tank units were 734,934,467 pounds, up

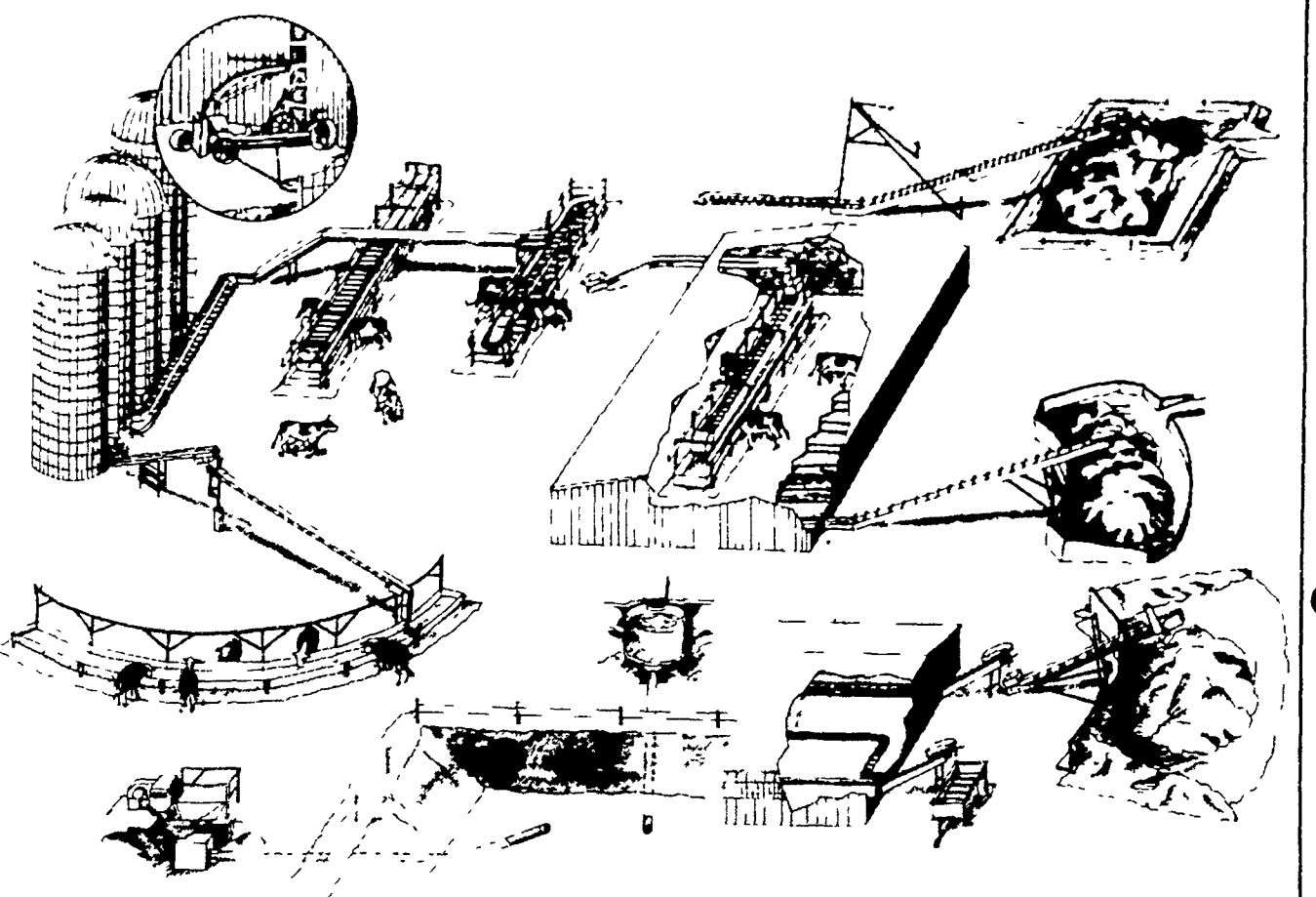
13,955,884 pounds. He added that this was 97.1 per cent of the pool, compared to 95.9 per cent a year ago.

A total of 387,847,496 pounds, or 52.1 per cent, of tank milk was used as Class II and was subject to the transportation credit which amounted to \$382,867.50.

Producers with tank milk numbered 18,244, a decrease of 2.2 per cent. The administrator said that the total number of producers in the pool was 19,319, a loss of 4.6 per cent. Average daily deliveries per producer rose 66 pounds to 1,264 pounds. The gross value to dairy

farmers of August milk deliveries was \$78,022,191.23. Wilson explained that this included differentials required to be paid to dairy farmers but not voluntary premiums or deductions authorized by the farmer. All prices quoted are for milk of 3.5 per cent butterfat received within the 201.210 mile zone from New York City.

TRY A CLASSIFIED AD!



Patz 96B silo unloader
150 cattle feeder
400 cattle feeder
162A circular feeder
101 Taper-Pan Feeder

162A conveyor
155A conveyor
166 overhead feeder
101 conveyor

166 conveyor
400 gutter cleaner
400 manure stacker
Model 100 mechanical manure pump

Model 200 manure pump
400 Swinging slide
386 manure stacker
266 liquidator
181 manure spreader

Silo unloading - Feed handling - Manure handling

Patz has the Equipment
Patz has the Personnel
Patz means confidence - depend on it

George Heath, District Manager 2618 Arcona Road, Mechanicsburg, PA 17055 697-5466



WINTERIZE YOUR FARM MACHINERY



with

- ★ Synthetic Oil ★ Synthetic Diesel Oil
- ★ Farm Hydraulic Transmission Oil
- ★ Hydraulic Fluid - Trucklifts, Forklifts
- Cold Weather - Easy Flow
- ★ Gear Lube
- ★ 2-cycle Oil - Mixes at a rate of 100 to 1
- ★ Multi-Purpose Grease - All Weather, Protects from - 50 degrees F up to 350 degrees F.

"We're a Synthetic Oil
And We're Many Lubricants"

SEE HIESTAND DISTRIBUTORS

ROOTS SALES BOOTH - EVERY TUESDAY

Or Call 717-426-3286
Write

HIESTAND DISTRIBUTORS, INC.
Box 96, Marietta, PA 17547

ALEXANDRIA

MAX ISENBERG
669-4027

BALLY

LONGACRE ELECTRIC
845-2261

CAMP HILL

LLOYD SULTZBAUGH
737-4554

EAST EARL

ZIMMERMAN EQUIPMENT
445-6409

ELLIOTTSBURG

CARL BAER
582-2648

HAMBURG

H. DANIEL WENGER
488-6574

HONEY BROOK

ZOOK'S FARM STORE
273-9730

KIRKWOOD

LANDIS & ESSBENSHADE
786-4158

LEBANON

MARVIN HORST
272-0871

McALISTERVILLE

CLAIR SANER & SON
463-2234

MILLERSBURG

LANDIS LABOR SAVERS
692-4647

MILTON

LANDIS FARMSTEAD AUTOMATION
437-2375

NEWVILLE

FRED B. MCGILLYRAY
776-7312

PIPERSVILLE

MOYER FARM SERVICE
766-8675

STREET MD

WALTER WEBSTER
452-8521

THOMASVILLE

KENNETH L. SPAHR
225-1064