

THE OLD FARMER'S ALMANAC

SEPT 27 - OCT 3 1976

Living leaves may announce a freeze

Area of the country where the first frost is expected to occur is shown in the map. The date of the first frost is given for each area. The date of the last frost is given for each area. The date of the first and last frost is given for each area.



Ask the Old Farmer

Home Hints: Use the old farmer's advice to help you get the most out of your farm. The old farmer's advice is to use the old farmer's advice to help you get the most out of your farm.

OLD FARMER'S WEATHER FORECASTS

New England - Week begins partly sunny and mild then heavy on coast and in south. Intermittent clouds but cooler than normal latter part.

Greater New York-New Jersey - Sunny and warm at first then fairly heavy rain and cooler, cloudy and cool latter part then clearing and pleasant.

Middle Atlantic Coastal - Thundershowers at first then slightly warmer than normal, partly cloudy skies latter part clearing and cool on weekend.

Piedmont & Southeast Coastal - Early week not and mostly cloudy with showers in south and east, rain in north and west, cloudy with rain along coast latter part then sunny and mild.

Florida - Dry and sunny to start except light showers in south then seasonable and cooler, showers and cooler latter part.

Upstate N.Y.-Toronto & Montreal - Thunderstorms and hot to start then turning much cooler with rain gradual clearing latter part, but temperatures remaining cooler than normal.

(All Rights Reserved Yankee Inc. Dublin N.H. 03444)

Pa. Auction Summary

Week Ending
September 17, 1976
Harrisburg, Pa.

CATTLE 9095. Compared with 6225 head last week, and 8048 head a year ago. Compared with last week's market, slaughter steers steady to \$1 lower. Slaughter heifers unevenly steady. Slaughter cows steady to \$1.50 lower. Slaughter bullocks steady to 50 cents lower. Slaughter bulls steady to strong.

STEERS: High Choice & Prime 37.75-39.50, Choice 36.50-39.75, Good 33.00-36.50, Standard 31.00-33.50, Utility 26.00-30.00. **HEIFERS:** Choice 33.00-38.00, Good 30.00-34.00, Standard 27.00-30.00, Utility 23.00-27.00. **COWS:** Utility & High Dressing Cutter 25.00-28.00, few 29.00, Cutters 23.50-26.50, Canners 20.50-24.00, Shells down to 16.00. **BULLOCKS:** Choice 34.50-37.50, Good 32.00-34.50, Standard 28.50-32.00, few Utility 24.00-28.50. **BULLS:** Yield Grade No. 1 1000-2000 lbs. 31.00-36.00; yield grade No. 2 900-1600 lbs. 29.00-33.50. **FEEDER CATTLE:** Choice 300-750 lbs. feeder steers 32.00-38.00, Good 300-800 lbs. 29.00-34.00, Medium 300-800 lbs. 21.50-30.00; few Good 300-700 lbs. feeder heifers 23.00-30.50, Medium 300-800 lbs. 18.00-24.00; Medium & Good 350-950 lbs. feeder bulls 20.00-30.00.

CALVES 5862. Compared with 3929 head last week, and 5294 head a year ago. Vealers steady to \$5 higher. **VEALERS:** Prime 58.00-74.00, Choice 49.00-65.00, Good 38.00-55.00, Standard & Good 110-130 lbs. 31.00-42.00, 90-110 lbs. 25.00-32.00, Standard 65-85 lbs. 25.00-32.00, Utility 50-90 lbs. 15.00-23.00. Farm calves, holstein bulls 90-110 lbs. 27.00-45.00;

holstein heifers 90-120 lbs. 25.00-35.00.

HOGS 7405. Compared with 4391 head last week, and 7340 head a year ago. Barrows & Gilts \$1.25 to \$2.50 lower, declining prices through the week. **BARROWS & GILTS:** US No. 1-2 195-240 lbs. 41.85-44.00, No. 1-3 195-245 lbs. 41.00-43.00, No. 2-3 180-260 lbs. 39.50-41.50, No. 2-4 255-330 lbs. 34.00-38.25, No. 1-3 135-190 lbs. 35.00-40.00. **SOWS:** US No. 1-3 300-650 lbs. 32.00-39.00, No. 2-3 300-650 lbs. 28.00-32.50. Boars 25.00-32.00. **FEEDER PIGS 1828.** Compared with 1193 head last week, and 1725 head a year ago. Feeder pigs \$1 to \$3 higher per head. US No. 1-3 20-35 lbs. feeder pigs 15.00-28.00 per head, No. 1-3 35-50 lbs. 25.00-37.00, few No. 1-3 50-100 lbs. 37.00-45.00, Utility 10-25 lbs. 6.00-17.00 per head. **SHEEP 926.** Compared with 359 head last week, and 751 head a year ago. Spring slaughter lambs steady to \$3 higher, increase on Choice. Choice 65-110 lbs. spring slaughter lambs 37.50-44.00, few to 46.00, Good 50-110 lbs. 31.00-40.00, Utility 40-65 lbs. 27.00-32.00. Slaughter ewes 8.00-18.00.

WOLFE 1828. Compared with 1193 head last week, and 1725 head a year ago. Feeder pigs \$1 to \$3 higher per head. US No. 1-3 20-35 lbs. feeder pigs 15.00-28.00 per head, No. 1-3 35-50 lbs. 25.00-37.00, few No. 1-3 50-100 lbs. 37.00-45.00, Utility 10-25 lbs. 6.00-17.00 per head. **SHEEP 926.** Compared with 359 head last week, and 751 head a year ago. Spring slaughter lambs steady to \$3 higher, increase on Choice. Choice 65-110 lbs. spring slaughter lambs 37.50-44.00, few to 46.00, Good 50-110 lbs. 31.00-40.00, Utility 40-65 lbs. 27.00-32.00. Slaughter ewes 8.00-18.00.

WOLFE 1828. Compared with 1193 head last week, and 1725 head a year ago. Feeder pigs \$1 to \$3 higher per head. US No. 1-3 20-35 lbs. feeder pigs 15.00-28.00 per head, No. 1-3 35-50 lbs. 25.00-37.00, few No. 1-3 50-100 lbs. 37.00-45.00, Utility 10-25 lbs. 6.00-17.00 per head. **SHEEP 926.** Compared with 359 head last week, and 751 head a year ago. Spring slaughter lambs steady to \$3 higher, increase on Choice. Choice 65-110 lbs. spring slaughter lambs 37.50-44.00, few to 46.00, Good 50-110 lbs. 31.00-40.00, Utility 40-65 lbs. 27.00-32.00. Slaughter ewes 8.00-18.00.

WOLFE 1828. Compared with 1193 head last week, and 1725 head a year ago. Feeder pigs \$1 to \$3 higher per head. US No. 1-3 20-35 lbs. feeder pigs 15.00-28.00 per head, No. 1-3 35-50 lbs. 25.00-37.00, few No. 1-3 50-100 lbs. 37.00-45.00, Utility 10-25 lbs. 6.00-17.00 per head. **SHEEP 926.** Compared with 359 head last week, and 751 head a year ago. Spring slaughter lambs steady to \$3 higher, increase on Choice. Choice 65-110 lbs. spring slaughter lambs 37.50-44.00, few to 46.00, Good 50-110 lbs. 31.00-40.00, Utility 40-65 lbs. 27.00-32.00. Slaughter ewes 8.00-18.00.

WOLFE 1828. Compared with 1193 head last week, and 1725 head a year ago. Feeder pigs \$1 to \$3 higher per head. US No. 1-3 20-35 lbs. feeder pigs 15.00-28.00 per head, No. 1-3 35-50 lbs. 25.00-37.00, few No. 1-3 50-100 lbs. 37.00-45.00, Utility 10-25 lbs. 6.00-17.00 per head. **SHEEP 926.** Compared with 359 head last week, and 751 head a year ago. Spring slaughter lambs steady to \$3 higher, increase on Choice. Choice 65-110 lbs. spring slaughter lambs 37.50-44.00, few to 46.00, Good 50-110 lbs. 31.00-40.00, Utility 40-65 lbs. 27.00-32.00. Slaughter ewes 8.00-18.00.

WOLFE 1828. Compared with 1193 head last week, and 1725 head a year ago. Feeder pigs \$1 to \$3 higher per head. US No. 1-3 20-35 lbs. feeder pigs 15.00-28.00 per head, No. 1-3 35-50 lbs. 25.00-37.00, few No. 1-3 50-100 lbs. 37.00-45.00, Utility 10-25 lbs. 6.00-17.00 per head. **SHEEP 926.** Compared with 359 head last week, and 751 head a year ago. Spring slaughter lambs steady to \$3 higher, increase on Choice. Choice 65-110 lbs. spring slaughter lambs 37.50-44.00, few to 46.00, Good 50-110 lbs. 31.00-40.00, Utility 40-65 lbs. 27.00-32.00. Slaughter ewes 8.00-18.00.

WOLFE 1828. Compared with 1193 head last week, and 1725 head a year ago. Feeder pigs \$1 to \$3 higher per head. US No. 1-3 20-35 lbs. feeder pigs 15.00-28.00 per head, No. 1-3 35-50 lbs. 25.00-37.00, few No. 1-3 50-100 lbs. 37.00-45.00, Utility 10-25 lbs. 6.00-17.00 per head. **SHEEP 926.** Compared with 359 head last week, and 751 head a year ago. Spring slaughter lambs steady to \$3 higher, increase on Choice. Choice 65-110 lbs. spring slaughter lambs 37.50-44.00, few to 46.00, Good 50-110 lbs. 31.00-40.00, Utility 40-65 lbs. 27.00-32.00. Slaughter ewes 8.00-18.00.

WOLFE 1828. Compared with 1193 head last week, and 1725 head a year ago. Feeder pigs \$1 to \$3 higher per head. US No. 1-3 20-35 lbs. feeder pigs 15.00-28.00 per head, No. 1-3 35-50 lbs. 25.00-37.00, few No. 1-3 50-100 lbs. 37.00-45.00, Utility 10-25 lbs. 6.00-17.00 per head. **SHEEP 926.** Compared with 359 head last week, and 751 head a year ago. Spring slaughter lambs steady to \$3 higher, increase on Choice. Choice 65-110 lbs. spring slaughter lambs 37.50-44.00, few to 46.00, Good 50-110 lbs. 31.00-40.00, Utility 40-65 lbs. 27.00-32.00. Slaughter ewes 8.00-18.00.

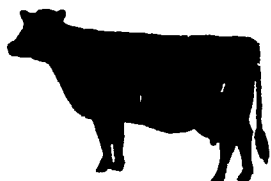
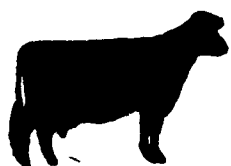
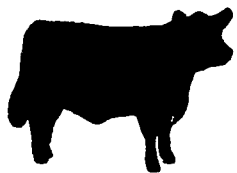
WOLFE 1828. Compared with 1193 head last week, and 1725 head a year ago. Feeder pigs \$1 to \$3 higher per head. US No. 1-3 20-35 lbs. feeder pigs 15.00-28.00 per head, No. 1-3 35-50 lbs. 25.00-37.00, few No. 1-3 50-100 lbs. 37.00-45.00, Utility 10-25 lbs. 6.00-17.00 per head. **SHEEP 926.** Compared with 359 head last week, and 751 head a year ago. Spring slaughter lambs steady to \$3 higher, increase on Choice. Choice 65-110 lbs. spring slaughter lambs 37.50-44.00, few to 46.00, Good 50-110 lbs. 31.00-40.00, Utility 40-65 lbs. 27.00-32.00. Slaughter ewes 8.00-18.00.

WOLFE 1828. Compared with 1193 head last week, and 1725 head a year ago. Feeder pigs \$1 to \$3 higher per head. US No. 1-3 20-35 lbs. feeder pigs 15.00-28.00 per head, No. 1-3 35-50 lbs. 25.00-37.00, few No. 1-3 50-100 lbs. 37.00-45.00, Utility 10-25 lbs. 6.00-17.00 per head. **SHEEP 926.** Compared with 359 head last week, and 751 head a year ago. Spring slaughter lambs steady to \$3 higher, increase on Choice. Choice 65-110 lbs. spring slaughter lambs 37.50-44.00, few to 46.00, Good 50-110 lbs. 31.00-40.00, Utility 40-65 lbs. 27.00-32.00. Slaughter ewes 8.00-18.00.

WOLFE 1828. Compared with 1193 head last week, and 1725 head a year ago. Feeder pigs \$1 to \$3 higher per head. US No. 1-3 20-35 lbs. feeder pigs 15.00-28.00 per head, No. 1-3 35-50 lbs. 25.00-37.00, few No. 1-3 50-100 lbs. 37.00-45.00, Utility 10-25 lbs. 6.00-17.00 per head. **SHEEP 926.** Compared with 359 head last week, and 751 head a year ago. Spring slaughter lambs steady to \$3 higher, increase on Choice. Choice 65-110 lbs. spring slaughter lambs 37.50-44.00, few to 46.00, Good 50-110 lbs. 31.00-40.00, Utility 40-65 lbs. 27.00-32.00. Slaughter ewes 8.00-18.00.

WOLFE 1828. Compared with 1193 head last week, and 1725 head a year ago. Feeder pigs \$1 to \$3 higher per head. US No. 1-3 20-35 lbs. feeder pigs 15.00-28.00 per head, No. 1-3 35-50 lbs. 25.00-37.00, few No. 1-3 50-100 lbs. 37.00-45.00, Utility 10-25 lbs. 6.00-17.00 per head. **SHEEP 926.** Compared with 359 head last week, and 751 head a year ago. Spring slaughter lambs steady to \$3 higher, increase on Choice. Choice 65-110 lbs. spring slaughter lambs 37.50-44.00, few to 46.00, Good 50-110 lbs. 31.00-40.00, Utility 40-65 lbs. 27.00-32.00. Slaughter ewes 8.00-18.00.

WOLFE 1828. Compared with 1193 head last week, and 1725 head a year ago. Feeder pigs \$1 to \$3 higher per head. US No. 1-3 20-35 lbs. feeder pigs 15.00-28.00 per head, No. 1-3 35-50 lbs. 25.00-37.00, few No. 1-3 50-100 lbs. 37.00-45.00, Utility 10-25 lbs. 6.00-17.00 per head. **SHEEP 926.** Compared with 359 head last week, and 751 head a year ago. Spring slaughter lambs steady to \$3 higher, increase on Choice. Choice 65-110 lbs. spring slaughter lambs 37.50-44.00, few to 46.00, Good 50-110 lbs. 31.00-40.00, Utility 40-65 lbs. 27.00-32.00. Slaughter ewes 8.00-18.00.



Middleburg

Middleburg, Pa.
September 21, 1976

CATTLE 423 Compared with last Tuesday's market slaughter steers steady to 25 cents lower. Slaughter cows 27 cents to \$1.50 lower. Few High Choice and Prime slaughter steers 37.85-40.25. Choice 2-4 950-1250 lbs. 36.25-38.10. Good 33.50-36.00. Standard 31.00-31.00. Few Utility 27.00-28.25. Few Choice slaughter heifers 27.00-27.50. Good 31.50-34.00. Few Standard 26.85-30.10. Utility and High Dressing Cutter slaughter cows 24.25-27.00. Cutters 27.00-27.75. Canners 20.00-27.85. Few Good slaughter bullocks 32.00-34.75. Utility 27.00-29.00. Few Yield Grade No. 1 1000-1500 lbs. slaughter bulls 33.00-33.25. Good and Choice 350-500 lbs. feeder steers and bulls 30.00-36.50. Good and Choice 300-500 lbs. feeder heifers 24.00-27.00.

CALVES 194 Vealers grading Good and Choice steady to \$2 higher. Standard and Good 70-110 lbs. \$3 to \$6 higher. Few Prime vealers 61.50-63.00, Choice 50.00-61.50, Good 40.00-50.00, Standard and Good 110-130 lbs. 35.00-40.00, 90-110 lbs. 32.00-35.00, Standard 70-85 lbs. 28.00-32.00. Farm Calves Holstein bulls 95-120 lbs. 34.00-42.50.

HOGS 423 Barrows and gilts \$1.25 to \$2.50 lower. US No. 1-2 200-230 lbs. barrows and gilts 40.50-42.00, No. 1-3 190-240 lbs. 39.50-40.50, No. 2-3 240-275 lbs. 39.00-39.50, few No. 2-4 300-325 lbs. at 37.00. US No. 1-3 400-650 lbs. sows 31.60-33.85. Boars 22.25-24.25. **FEEDER PIGS 204.** US No. 1-3 15-20 lbs. feeder pigs 13.50-20.00 per head, No. 1-3 20-35 lbs. 20.00-26.50, No. 1-3 60-100 lbs. 30.50-44.50 per head.

SHEEP 49. Choice 70-100 lbs. spring slaughter lambs 43.00-50.00, Utility and Good 45-85 lbs. 33.00-36.00. Slaughter ewes 13.00-22.00.

Harrisonburg, VA.

SPECIAL SLAUGHTER CATTLE SALE:
Harrisonburg, Va.
Sept. 16, 1976

There were 283 head sold. All steers and heifers were graded by Representatives of the VDAC's Division of Markets, Livestock Section on USDA standards and sold by the hundredweight.

Choice & Prime 876-1100 lbs. \$36.00-36.70; Choice 850-1160 lbs. \$35.30-36.50; Good 935-1135 lbs. \$32.50-34.20; Good Holsteins 948-1358 lbs. \$31.80-32.60; Good Single Steers 860-1195 lbs. \$31.00-35.50; Choice Heifers 833-960 lbs. \$33.60-35.40.

Chambersburg

Chambersburg, Pa.
September 18, 1976

CATTLE 600 Compared with last Thursday's market slaughter steers about steady. Slaughter cows steady to 75 cents higher. Choice slaughter steers 36.60-38.10. Good 33.75-36.50. Standard 31.25-33.25. Utility 28.50-30.75. One Choice slaughter heifer at 27.75 one Standard at 22.25. Utility & High Dressing Cutter slaughter cows 26.50-28.85. Few to 29.60. Cutters 24.25-26.75. Canners 21.85-24.75. Shells down to 19.00. Yield Grade No. 1 1100-1850 lbs. slaughter bulls 28.85-35.85. Good & Choice 450-800 lbs. feeder steers 27.00-36.10.

CALVES 680 Vealers grading Choice \$2 to \$4 higher. Standard & Good 90-130 lbs. \$1 to \$4 lower. Prime vealers 58.00-66.00, Choice 50.00-65.00, Good 41.00-55.00, Standard & Good 110-130 lbs. 35.00-42.00, 90-110 lbs. 32.00-

36.00. Standard 70-85 lbs. 27.50-33.00. Utility 30-65 lbs. 20.00-27.00. Farm calves, holstein bulls 95-120 lbs. 34.00-44.00.

HOGS 62 Barrows & Gilts \$2.50 lower. US No. 1-2 200-230 lbs. barrows & gilts 40.85-41.50. Few lots No. 1-3 200-265 lbs. 39.85-40.85. US No. 1-3 400-450 lbs. sows 32.25-34.75. **FEEDER PIGS 89** US No. 1-3 20-30 lbs. feeder pigs 17.50-23.75 per head, No. 1-3 30-45 lbs. 23.00-26.50 per head.



USED HARVESTORE FOR SALE

2032-2070

CALL (717) 354-4051

ARE YOU LOSING MONEY?

You could be if you aren't breeding your heifers through A.I. Why miss a great genetic opportunity? ABS has 8 bulls noted for their calving ease for use on virgin heifers. With A.I. your heifers can give you better herd replacements sooner.



29 H2502 Ludvue FOND TOM 1572656 EX
USDA 5/76
34 D, 61 R, 30 H, 16,281M 3.53% 5748F
RPT 67% RIP 0%
PD[74] +\$40 +735M -17% +18F
SIRE: No-Na-Me Fond Matt
DAM: Ludwig Skyline Topsy

TOM is an excellent son of Matt, that is generating a lot of excitement. He sires great udders, plenty of strength, good feet and legs, and straight strong loins.



29 H1885 Fultonway Ivanhoe BELSHAZZAR 1454720 VG PQ 9/75
USDA 5/76
3968 D., 7142 R., 1579 H., 15,690M 3.62% 5688F
RPT 99% RIP 12%
PD[74] +\$81 +951M .01% +338F
SIRE: Osbordale Ivanhoe
DAM: Hillside Burke Gracia

BELSHAZZAR is one Ivanhoe's very best sons. Not only is he a great milk bull, but he also sires high testing daughters that wear a long time.

Call your local ABS representative today!

Bangor, PA	Eric Heinsohn	215-588-4704
Denver, PA	Darvin Yoder	215-267-3423
Gap, PA	Lynn Gardner	717-656-6509
Holtwood, PA	Paul Herr	717-284-4592
Landisville, PA	James Charles	717-898-8694
Milton, PA	Marlin Bingaman	1-800-322-8550
Port Murray, NJ	Robert Kayhart	201-689-2605
Reading, PA	Robert Greider	215-374-7798
Richland, PA	Paul Martin	717-866-4228
Stewartstown, PA	Marvin Joines	717-993-2281
Thomasville, PA	Ira Boyer	717-225-3758
Vincentown, NJ	Gerald Hall	609-463-3783
West Grove, PA	Maurice Stump	215-869-9187



AMERICAN BREEDERS SERVICE