

# Livestock market and auction news

## St. Louis Cattle

Sept. 16  
 Receipts This Week 9,000  
 Week Ago 8,300  
 Year Ago 8,600

As compared to last weeks close, Slaughter Steers generally steady. Slaughter Heifers steady to weak, instances 25-50 lower. Cows 50-1.00 higher. Bulls fully steady. Supply mainly Choice 2-4 1000-1150 lb. Slaughter Steers, around 25 percent Heifers and 10 percent Cows.

NOTE: A substantial increase was noted in the supply of 3-5 Slaughter Steers and Heifers, plus Steers over 1300 lbs. and Heifers over 950 lbs.

SLAUGHTER STEERS: Mixed Choice and Prime 2-4 1050-1150 lbs. 37.00-37.50, late sales 37.00; 3-4 1100-1325 lbs. 36.00-37.50, closing 36.00-36.50. Choice 2-4 950-1250 lbs. 36.00-38.00, closing 36.00-37.25; 3-4 1075-1325 lbs. 35.50-36.50, closing 35.50-36.00. Load 4-5 1400 lbs. 33.50. Load 4 to mostly 5 1505 lbs. 31.25. Mixed Good and Choice 2-3 900-1200 lbs. 35.00-36.75. Load

2-3 1300 lb. Holsteins 34.00. Good 2-3 33.75-35.75. Standard to Good Holsteins 1000-1250 lbs. 30.00-33.50.

SLAUGHTER HEIFERS: Mixed Choice and Prime 2-4 900-1025 lbs. 35.00-36.00, closing 35.00-35.50; 3-4 950-1050 lbs. 34.25-34.50. Choice 2-4 800-1050 lbs. 34.00-35.75, closing 34.00-35.00; 3-4 925-1050 lbs. 34.00-35.00, closing 34.00-34.50. Mixed Good and Choice 2-3 700-900 lbs. 33.00-34.50. Good 2-3 30.50-33.50.

COWS: Utility and Commercial 1-3 22.00-24.50. Utility 1-2 24.50-25.00. Cutter 1-2 20.50-23.00. Canner and Low Cutter 18.50-21.50. Low Dressing Canner 16.00-19.00.

BULLS: Limited volume YG 1-2 950-1600 lbs. 26.00-30.00.



## BEEFALO CALVES

- Produce tender, lean, full flavored meat, without the fat and cholesterol which is required for taste in regular beef.
- Tremendous amount of true hybrid vigor.
- Can be registered as Beefalo half blood breeding stock for progression to a Purebred herd.
- Good supply of Beefalo x Holstein dairy calves on hand. (Calves healthy and vigorous when sold).
- Bred heifers for Beefalo calving in Sept., Oct.

**SEMEN \$10 PER AMPULE**  
 (50 ampules or more)

**WALNUT HOLLOW FARM**  
 Creek Road, Pipersville, PA 18947  
 215-795-2452  
 Member American Beefalo Association

## Dewart Auction

Dewart, Pa.

September 13, 1976

CATTLE 294. Compared with 2 week's ago market; few High Choice & Prime slaughter steers 37.75-38.60, Choice No. 2-4 950-1250 lbs. 36.50-37.85, Good 34.00-36.00, Standard 31.00-33.35. Few Choice slaughter heifers 30.50-35.00, few Good 30.00-32.85, few Standard 30.00-31.00, Utility 24.00-28.00. Utility & High Dressing Cutter slaughter cows 25.25-27.75, couple at 29.25, Cutters 24.00-25.75, Canners 20.50-24.00, few Shells down to 16.25. Few Choice slaughter bullocks 36.35-37.50, few Utility 28.50-31.75. Yield Grade No. 1 850-1000 lbs. slaughter bulls 27.50-29.50; yield grade No. 2 1050-2050 lbs. 31.00-31.75. One lot Good 400-500 lbs. feeder steers 39.50, one lot Medium 600-700 lbs. 25.75; one lot Good 500-500 lbs. feeder heifers 23.25.

CALVES 212. Prime vealers 49.00-58.00, Choice 45.00-54.00, Good 38.00-46.00, Standard & Good 110-130 lbs. 29.00-33.50, 90-110 lbs. 26.00-30.00, Standard 70-85 lbs. 21.00-26.00. Farm calves, holstein heifers 90-115 lbs. 27.00-33.00.

HOGS 200. US No. 1-2 200-235 lbs. barrows & gilts 42.90-43.70, No. 1-3 195-240 lbs. 42.70-43.10, one lot No. 2-3 250 lbs. 41.70, one lot No. 2-4 300 lbs. 37.25. US No. 1-3 350-550 lbs. sows 32.25-35.25, No. 2-3 500-650 lbs. 30.00-32.25. Boars 24.50-32.50.

FEEDER PIGS 151. US No. 1-3 12-15 lbs. feeder pigs 15.00-19.00 per head, No. 1-3 20-35 lbs. 22.50-33.50, No. 1-3 35-50 lbs. 25.00-37.00 per head.

SHEEP 17. Few Mixed Utility & Good 60-70 lbs. spring slaughter lambs 32.00-34.00. Slaughter ewes 10.00-18.00.

## East Coast Carlot Meats

Sept. 15, 1976

Compared to Tuesday's close: demand and commitment for beef moderate as reported by USDA. Choice Steer Beef generally steady, no comparison on Goods. Good Heifer Beef 1.00-1.50 lower. Cow Beef uneven, BNG. Utility in limited test weak, Canner and Cutter steady to 2.00 higher. Spring Lamb 75 lbs. down steady to 1.00 higher. Choice Beef arm chucks .50 higher, no comparison on other cuts. Fresh pork: loins 4.00-5.50 lower; spareribs .50 lower; SKD. hams steady to .25 higher.

Steer Beef  
 Choice 2-3 600-700 lbs. 62.00 no comparison, 3 600-800 lbs. 61.50-61.75 generally steady, 4 600-800 lbs. 57.00 steady, 4 800-900 lbs. 56.00 steady; Good 3 600-800 lbs. 58.00-58.75 no comparison.

Heifer Beef  
 Good 3 500-700 lbs. 55.00-56.50 1.00-1.50 lower.

Cow Beef  
 Utility Bng. 1-2 600 lbs. up Ltd 51.00 weak; Canner-Cutter 1-2 350 lbs. up 52.00-54.00 steady to 2.00 higher.

Choice 3  
 Primal Beef Cuts  
 Steer hinds 145-190 lbs. 74.00 no comparison; arm chucks N90-130 lbs. 47.50 part load 49.00 .50 higher; arm backs 100-150 lbs. part load 58.00 no comparison; ribs 25-35 lbs. 82.00-83.00 no comparison; full plates 28.00 no comparison; short plates 24.50 no comparison; flanks trimmed 25.00-26.00 no comparison.

Choice 4  
 Primal Beef Cuts  
 Arm chucks 90-130 lbs. 47.00.

Spring Lamb Carcass  
 Choice & Prime 3-4  
 55 lbs. down Ltd. 94.00 no comparison; 75 lbs. down 92.00 few 93.00 steady to 1.00 higher.

Fresh Pork Cuts  
 Loins 14 lbs. down 86.00 4.00 lower, 14-17 lbs. 84.00-85.00 4.50-5.50 lower; Picnics 4-8 lbs. 47.50 no comparison; Spareribs 3 lbs. down 82.75 .50 lower; Skd. hams 17-20 lbs. 70.75 steady to .25 higher, 26 lbs. up 63.75 no comparison.

Smoked Pork  
 Skd. hams 16-20 lbs. 77.00 no comparison; Picnics 4-8 lbs. 58.00 no comparison; No. 1 sliced bacon vacuum pack 117.00 no comparison.

Boneless beef 90 per cent chemical lean, fresh Ltd. 72.50 steady.  
 Boneless beef 85 per cent chemical lean, fresh 68.50-69.50 steady to 1.00 lower.  
 Beef trimming 50 per cent chemical lean, fresh 27.00-28.50 no comparison.

## Joliet Cattle

September 16, 1976

WEEKLY CATTLE: Friday through Wednesday's salable receipts 9,780, 5 days last week 8,485, last year 7,712. Slaughter Steers under 1250 lbs. 50 to 1.00 lower than last Friday. Steers over 1250 lbs. unevenly 1.00-3.00 lower than last Friday. Heifers mostly Choice Steers and Heifers, with a noticeable increase in High Choice and Prime 3-5 over 1250 lbs. Steers.

SLAUGHTER STEERS: High Choice and Prime 3-4 1200-1300 lbs. 36.00-37.00, up to 37.50 Monday, 4 and 5 1300-1475 lbs. 34.00-36.00, 2 loads 5 1475-1640 lbs. 32.50. Choice 2-4 1025-1250 lbs. 37.50-38.50 Monday, 37.00-38.00 Wednesday. Mixed Good and Choice 2-3 1000-1200 lbs. 36.00-37.00, up to 37.50 Monday. Mixed Good and Choice Holstein 2-3 1200-1350 lbs. 32.75 Wednesday.

SLAUGHTER HEIFERS: Choice, few Prime, 2-4 900-1050 lbs. 36.00-37.50 Monday, 35.00-36.50 Wednesday. Mixed Good and Choice 2-3 800-1000 lbs. 34.00-35.00, up to 36.00 Monday.

## Harrisonburg, VA.

### SPECIAL FEEDER PIG SALE

Wednesday, Sept. 15, 1976

There were 2,833 head sold. All pigs were graded by Representatives of the VDAC's Division of Markets, Livestock Section on USDA standards and sold by the hundredweight.

1 & 2: 30-49 lbs. 64.25-75.00; 50-69 lbs. 56.50-60.00; 70-99 lbs. 47.00-50.25; 100-130 lbs. 45.00.

No. 3: 30-49 lbs. 61.75-75.00; 50-69 lbs. 54.50-55.00; 70-99 lbs. 45.50-50.75; 100-130 lbs. 44.00.

Utility: 30-49 lbs. 59.00-63.00.

No. 4: 30-49 lbs. 56.50-64.50. Light weight 25 lbs. 71.75.

## Danville

### Auction

Danville  
 Sept. 13, 1976

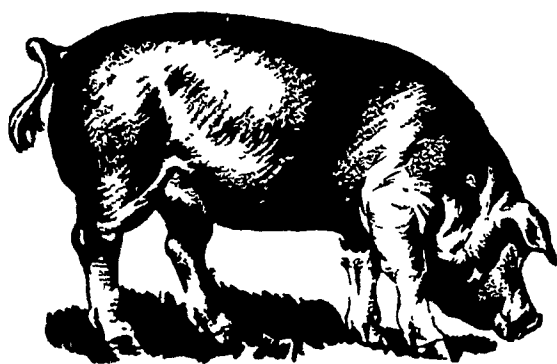
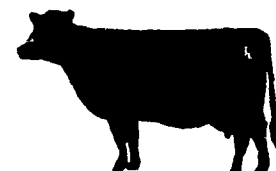
STEERS: Good to Choice 36.00 to 37.85; Standard to Good 32.20 to 35.50.

FEEDER STEERS: Good to Choice 32.00 to 36.00; Standard to Good 28.00 to 32.00.

BULLS: 28.75 to 32.00.  
 COWS: High Choice to Prime 27.00 to 28.10; Good to Standard 25.40 to 26.85; Utility 22.00 to 24.80; Cutters 20.00 to 22.50.

CALVES: Good to Choice 50.00 to 54.00; Standard to Good 24.00 to 36.00.

HOGS: 41.90 to 43.20.  
 SOWS: 33.25 to 38.00.  
 BOARS: 26.00 to 36.00.



## FARMERS . . .

Know what you are going to get for your hogs before they leave your farm.

Every Mon. Tues. & Wed.

8 A.M. to 1 P.M.

**SAVE YOUR SELLING COST!**

**HOGS WEIGHED IMMEDIATELY!**

**PAID IMMEDIATELY!**

## PENN PACKING BUYING STATION

AT GREEN DRAGON LIVESTOCK SALE  
 1 Mile North of Ephrata RD3, Pa.

Call for Market Quotes each morning  
 717-733-9154 or 717-733-9648

### ATTENTION

Yes - we have black plastic

**SPECIAL DISCOUNTS ON SILO CAPS, BLACK PLASTIC SILAGE COVERS, 4 MIL. & 6 MIL. THICKNESS, 100 ft. Rolls by 16', 20', 24', 28', 32' & 40' Wide.**

### "SILAGE EXTRA"

It's Different

A fermentation silage preservative, controls spoilage, increases protein and flavor. Can also be mixed with salt.

SWEET-LIX 3-in-1 Blocks.

BAYMIX Cattle Wormer

Why Not Try Our Livestock Medication Program & Special Prices Today.

ZIMMERMAN'S

ANIMAL HEALTH SUPPLY

RD4, Lititz, PA 17543 Home Store Phone: 717-733-4466

ALSO AVAILABLE AT DAVID GOOD'S FARM MACHINERY SALES.