

Poultry Market Reports

Weekly New York Egg Market

From Monday, September 13 to Friday, September 17

	Mon.	Tues.	Wed.	Thurs.	Fri.
WHITE					
Ex. Large	74	74	74	74	74
Large	72	72	72	72	72
Mediums	65	63	63	63	63
Pullets	49	49	49	49	49
Peewees	31	31	31	31	31

BROWN					
Large	78	78	78	78	78
Mediums	Unquoted				
Pullets	Unquoted				
Peewees	Unquoted				

Off Grade					
Large	67	67	67	67	67
Checks	48	48	48	48	48

Tone — Offering of Large About in Balance, Mediums Ample.

Copyright 1976 Urner Barry Publications

New England Weekly Shell Egg Report

Tuesday, September 14, 1976

Prices paid per dozen Grade "A" brown eggs in cartons delivered to retail stores:

	EXTRA LARGE	LARGE	MEDIUM	SMALL
MASS. +	83-92	82-91	74-89	52-63
Mostly	84-85	83-84	75-76	53-54
NEW HAMP.	74-81	73-80	61-68	44-51
Mostly	77-78	76-77	64-65	47-48
R. I.	87-88	86-87	77-79	56-57
VERMONT	81-90	80-89	72-81	-
Mostly				
MAINE	81-83	80-82	68-70	51-53

+ Includes Central and Western Sections Only.

NEST RUN EGGS

Prices are from Egg Clearinghouse, Inc., (ECI) Durham, N.H. and reflect trading prices for gradeable nest run eggs (GNR) on ECI, a nationwide trading center for producers, packers and marketers. GNR eggs are classified by weight in 30-dozen cases, and traded in lots of either 300 or 750 cases. Prices are FOB buyers dock, and are computed Tuesday and Thursday of each week. This week's prices for each classification were:

Classification	New Weight Per Case	Tuesday	Thursday
Extra Large	51 lbs.		
Class 1 - Large	48 lbs.	60	60
Class 2 - Large	45 lbs.	58	58
Class 3 - Medium	42 lbs.	51	51
Class 4 - Small	39 lbs.	45	45
Breaking Stock	48 lbs.	59	58
Checks	48 lbs.	49	49

Baltimore Eggs

Wednesday, Sept. 15

Market unsettled. Demand irregular. Prices unchanged to three cents lower on Mediums. Supplies of Large sizes adequate, Mediums well cleared. Cartoned Eggs: Prices to retailers, state graded (minimum one case sale) white.

Lancaster Farming

P.O. Box 266 - Lititz, PA 17543
Office: 22 E. Main St., Lititz, PA 17543
Record-Express Office Building
Phone: Lancaster 717-394-3047
or Lititz 717-626-1164

Robert G. Campbell, Publisher
Dieter Krieg, Editor
Joanne Spahr, Associate Editor
Judy Mitchell, Berks County Correspondent

Subscription Price \$4 per year
Established November 4, 1955
Published every Saturday by Lancaster Farming
Lititz, PA
Second Class Postage paid at Lititz, PA 17543

For Address Change form or new subscription see Classified Section.

Members of Newspaper Farm Editors Assn., Pa Newspaper Publishers Association, and National Newspaper Association

Delmarva Poultry

Wednesday, Sept. 15, 1976
Ready to Cook movement - continues fairly good though less aggressive in some quarters than yesterday. Slaughter schedules generally remain heavy at most plants. Today's LTL asking prices held unchanged on both plant and US grade A. Live supplies fully adequate at weights tending heavier than desired in instances. Undertone unsettled.

Negotiated, trucklot prices 2-3 lb. ready to cook Broiler-Fryers for delivery this-next week: plant grade 40-41.

Current Broiler-Fryer negotiated prices for immediate includes mostly multiple-drop shipments to New York City from Delmarva.

RANGE: US Grade A 43%-44; Plant Grade 42-43; Premium X US Grade A 45-50; Premium X Plant Grade 44-48.

WTD. AVG.: US grade A 43.93; Plant Grade 42.79; Premium X US Grade A 48.38; Premium X Plant Grade 47.85.

X-Includes special services, selected competitive brands, etc.

Eastern Pa. & N.J. Poultry

Wednesday, Sept. 15

Prices unchanged farm offerings of light type hens barely adequate for a fair processor interest. Offerings of heavy type adequate for an improved demand for the upcoming Hebrew Holidays.

Prices paid at farm: Light type hens 12-14½ mostly 14-14½ in Pa., mostly 14-14½ in N.J.

Heavy type hens TFEWR.

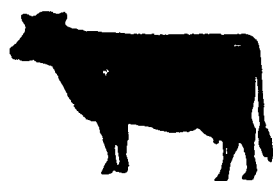
Philadelphia Eggs

Prices unchanged to lower on Mediums, unchanged on balance. Cartoning demand fair for adequate offerings of larger sizes and light for ample Mediums. Undertone steady but cautious.

Prices to retailers: sales to volume buyers, consumer grades.

White eggs in cartons, delivered: Store Door.

A Extra Large 75-76½; A Large 74-75½; A Medium 64-67½.



TRY A CLASSIFIED AD!

Hay Markets

Regional Hay

(All hay No. 2 and better, prices paid by dealers at the farm, price per ton.)

Hay & Straw slow movement, but steady.

Alfalfa 65.00-75.00; Mixed hay 55.00-60.00; Timothy hay 50.00-60.00; Straw 35.00-50.00; Mulch 20.00-25.00.

Green Dragon

GREEN DRAGON, EPHRATA, PA. September 3, 1976

Prices per ton; 30 loads hay & 9 loads straw.

Alfalfa, few 62.00-75.00; Timothy, couple loads 59.00 & 60.00; Mixed hay, few 55.00-65.50, some 35.00-49.00; Straw 46.00-66.00; Corn, 23 loads 80.00-89.00.

Fogelsville Poultry

Sale of Sept. 14, 1976

Hens, heavy type 15-25, mostly 18-22; Pullets 37-47, mostly 39-42; Roasters 21-41; Ducks 26-48, mostly 35-43; Drakes 26-43½, mostly 38-43; Geese 44; Turkeys-Hens 44; Rabbits 30-41, mostly 35-40; Guinea 90-1.08; Pigeons (per pr.) 89-1.05.

Total coops sold 369. Auction Day - Tuesday each week at 11:30 a.m.

Poultry Received - Mon. 7 p.m. to 10:30 p.m., Tuesday 7 a.m. to 12 noon.

Directions - Take Rt. 22 thruway. Exit at Fogelsville Exit, North to stop light in Fogelsville, turn left, proceed one block, turn left, again at Cracker Barrel Restaurant. Auction right side 100 feet from your last left turn.

New Holland

HAY, STRAW AND GRAIN Monday, Sept. 13 11 A.M.

72 Loads. Mixed Hay, mostly 50 to 70, few up to 81; Alfalfa, Mixed 45 to 67; Alfalfa, mostly 65 to 86; Timothy 44 to 68; Clover 57 to 66; Ear Corn, 12 loads 92.50 to 95.50 per ton; Straw 55 to 67, 1 load with a lot of moisture 40; Oats \$1.85 per bushel.

Harvey Z. Martin

Leola, Pa

Wednesday, Sept. 15, 1976

52 Loads. Alfalfa 64 to 80; Clover 30 to 64; Timothy 38 to 70; Mixed Hay 35 to 61; Stubble Hay 33 to 44; Straw 54 to 72; Corn 88 to 97.

Lancaster Grain Prices


Friday, Sept. 17

These prices are made up of the average prices quoted by a number of participating area feed and grain concerns. It should be noted, however, that not every dealer or broker handles each commodity. All prices are per bushel except ear corn and soybean meal which are per ton.

The average prices quoted Friday, Sept. 17, are as follows:

	Bid+	Offered+
New Corn	60.00	66.00
Old Ear Corn		
	86.00	95.00
Shelled Corn 2.88		3.45
Oats		
- Local	1.54	1.79
- Western	1.84½	2.03
Wheat	2.88	3.15
Soybeans	6.65	
Soybean Meal		239.00





OUR GOAL IS GETTING TOP DOLLAR FOR YOU

SHIP TO THE
DANVILLE LIVESTOCK MARKET

Old Rt. 11 Danville, Pa.
Phone (717) 275-2880

SALE EVERY MONDAY 2 P.M.

Horse Sale 2nd Sat. Every Month 10:30 A.M.

OWNER: MELVIN M. LEHMAN
717-964-3621 Res.
717-275-2880 Bus.

Moyer's CHICKS, INC.

DEKALB BROWN & WHITE EGG LAYERS

Quakertown, PA 18951 (215) 536-3155

HUBBARD WHITE MT. BROILERS



The foundation is the most important part of any structure. The ground floor of our new plant expansion is now finished and ready for the main floor construction.

We'd like to provide you with the secure foundation you need for a profitable layer flock - Moyer's grown, DEKALB Profit Pullets. You're assured of ready-to-lay pullets of proper weight, health status, and maturity.

On what type foundation are you building your next laying flock?