

Know Where the Activities Will Be?  
Read the Farm Women Calendar.

## BEEFALO HYBRID CATTLE BEEFALO — IT'S GREAT

- Rapid gains on grass and roughage
- 55-65 lb. Births - up to 1100 lb. yearling
- Test data show 62 percent carcass dress out
- We stock and distribute Pureblood Beefalo Semen and Half-Blood Beefalo heifers and bulls
- Visit our farm and see our animals

**SEMEN \$12** an ampule

NOW TAKING ORDERS FOR 3/4 BULLS & HEIFERS

### BEEFALO N & J

4270 Quakerbridge Road  
Princeton, NJ 08540  
609-896-0336

Member World Beefalo Association

## ATTENTION FARMERS!!

## SPRAY MATERIALS

AND

## INSECTICIDES

Place Orders Now For Best Price On

## FURADAN

**IM-PRUV-ALL** SILAGE COMPOUND

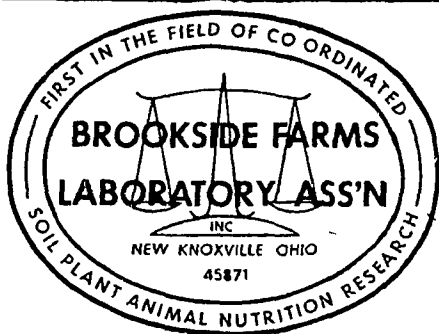
QUALITY CONKLIN PRODUCTS

## MELVIN R. WEAVER

RD1 Box 529

Manheim, PA

PH: 717-569-6576

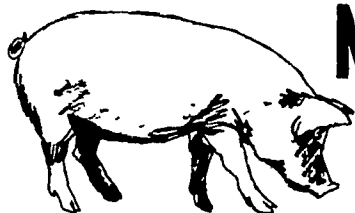


National Reputation - Local Service

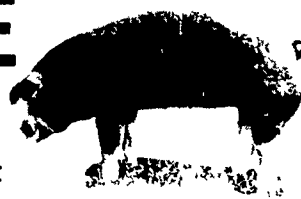
CONTACT:

**JOHN CAMPBELL**  
Atglen, PA  
(215) 593-5529

**GARY McGEE**  
Spring Run, PA  
(717) 349-2340



## NEXT FEEDER PIG SALE TUESDAY, SEPT. 28- 1P.M.



Consign all your feeder pigs to Walter M. Dunlap & Sons  
where they will be handled by a capable and experienced staff.

FEEDER PIGS WILL BE RECEIVED AT 6 A.M. RATHER THAN 7 A.M. (6 A.M. TO 11 A.M.)

## WALTER M. DUNLAP & SONS

### LANCASTER STOCK YARDS

Consignors can get state tags at our office, thereby saving 25c marketing expense.

For Further Information, Call 717-397-5136

## Hog Markets

### Peoria Auction

Thursday, Sept. 16  
HOGS: 4000.  
Barrows & gilts fairly active, opening 50 lower.  
US 1-2 200-240 lb. 39.50-40.00; US 1-3 200-250 lb. 39.00-39.50.

### St. Louis

Thursday, Sept. 16  
HOGS: 6000.  
Barrows & gilts moderate, 50-1.00 lower, large share 50-75 lower.  
US 1-2 200-240 lb. 40.25-40.50; US 1-3 200-250 lb. 39.75-40.25.

### Vintage

Vintage Fat Hog Sale  
Paradise, Pa.  
Wednesday, Sept. 15  
Head 394.  
No. 1 42.35-42.75; No. 2 and 3 41.35-42.00; Heavy Hogs 250-290 lbs. 35.50-41.50; Light hogs 165-175 lbs. 34.25-37.00; Sows 400-600 lbs. 33.75-36.00; Boars 200-400 lbs. 28.00-33.50.

Vintage Hog Sale  
Saturday, Sept. 11  
Head: 929.  
No. 1 43.60-44.00; No. 2 and 3 42.50-43.00; 250-300 lbs. 38.75-42.35; Lightweight 170-185 lbs. 34.75-38.75; Sows 300-600 lbs. 36.00-39.00; Boars 200-250 lbs. 37.00, 300-400 lbs. 31.75.

### Lancaster

### Market

Monday, Sept. 13  
HOGS: Barrows and gilts 1.00 lower.  
BARROWS AND GILTS: Few US 1 210-230 lb. 44.00-44.75; US 1-2 200-240 lb. 42.75-43.35; US 2-3 200-245 lb. 42.00-42.75.

### Lancaster

### Auction

Wednesday, Sept. 15  
HOGS: Barrows and gilts 50-1.00 lower.  
BARROWS AND GILTS: US 1 210-225 lb. 43.50; US 1-2 200-240 lb. 41.85-42.25, few 42.50; US 2-3 200-245 lb. 41.25-41.75.  
SHEEP: One lot Good 69 lb. spring lambs 37.50.

### Lancaster

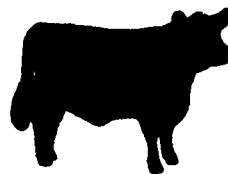
### Feeder Pigs

Tuesday, Sept. 14  
Feeder Pigs  
Today 1840  
Two Weeks Ago 1332  
TREND: Compared to two weeks ago feeder pigs 2.00-6.00 lower. All prices on a per hundred weight basis.  
US 1-2 38-45 lb. 80.00-84.00; 45-50 lb. 72.50-80.50; 50-65 lb. 60.00-69.50; Couple lots 70-75 lb. 56.00-66.00.  
US 2-3 25-40 lb. 74.00-85.00; Few mainly 3 30-36 lb. 67.00-74.00; 40-60 lb. 64.00-77.00; Few 60.00-65.00; 60-75 lb. 56.00-62.00.  
Utility Few 22-28 lb. 61.00-69.00; One lot 40 lb. 49.00.

### Lancaster

### Feeder Cattle

Friday, Sept. 10  
Feeder Cattle  
Today 432  
Last Friday 443  
TREND: Market not fully tested although Choice steers steady to strong. Standard and Good steady to weak; feeder bulls 50-75 lower.  
FEEDER STEERS: Load Choice 355 lb. 39.25, couple lots Choice 900-930 lb. 37.50-38.25, one lot Choice 440 lb. 38.75; one lot mixed Good and Choice 700 lb. 36.25; Good 475-750 lb. 31.00-35.50.  
FEEDER BULLS: Choice 400-650 lb. 31.50-33.00; Good 400-700 lb. 28.75-31.50.  
FEEDER HEIFERS: Part load Choice 320 lb. 34.00.



## Futures Trading

(Closing bids as of Thursday, September 16)

	Chicago Cattle	Chicago Hogs	New York Maine Potatoes	New York Fresh Eggs
September				62.95
October	39.00	37.10		59.75
November			4.84	60.60
December	40.80	35.85		60.50
January				58.50
February	41.15	35.35		
March			5.64	
April	42.20	34.60	6.04	
May			7.70	
June				

Trend — Cattle are Lower, Hogs are Stronger, Potatoes are Stronger, and Eggs are Stronger.

Markets Provided by Commodity Department  
Reynolds Securities, Inc.

## CHICAGO GRAIN FUTURES

(Closing bids as of Thursday, September 16)

	Corn	Wheat	Soybeans	Soybean Meal
September	2.91 3/4	3.08 1/2	6.83	187.80
October				188.80
November			6.90	
December	2.89 3/4	3.19 3/4		192.40
January			6.96	193.00
February				
March	2.97	3.31 3/4	6.97 3/4	194.00
May	3.01	3.37 3/4	6.98 3/4	
June				

Trend — Corn is Mixed, Wheat is Lower, Soybeans are Higher, and Soybean Meal is Higher.

Markets Provided by Commodity Department  
Reynolds Securities, Inc.

## U.S. Inspected Livestock Slaughter

Estimated Daily Livestock Slaughter  
Under Federal Inspection

	CATTLE	HOGS	SHEEP
Week to Date	623,000	1,233,000	118,000
Same Period Last Week	475,000	875,000	89,000
Same Period Last Year	581,000	1,008,000	130,000

### Joliet Cattle

CATTLE: 3600. Trading moderate on steers, slow on heifers. Slaughter steers opening 50 lower than late Monday. Heifers 50 to 75 percent heifers. Steers mostly Choice 2-4 1025-1250 lbs. with about 15 percent High Choice and Prime 3-5 1200-1450 lbs. steers. Heifers mostly Choice 2-4 900-1050 lbs.  
SLAUGHTER STEERS: High Choice and Prime 3-4, few 5, 1200-1350 lbs. 36.25-37.00 early. Choice 2-4 1025-1250 lbs. 37.00-38.00. Mixed Good and Choice 2-3 1000-1200 lbs. 36.00-37.00.  
SLAUGHTER HEIFERS: Choice, few Prime 2-4 900-1050 lbs. 35.25-36.00, load 36.25. Mixed Good and Choice 2-3 800-1000 lbs. 34.00-35.25.

## J. M. HOOBER INC.

Specializing In The Filling Of  
Your Custom Feeder Orders.

Fully Staffed To Handle Your  
Market Cattle & Market Hogs.

### NEXT FEEDER PIG SALE

SEPTEMBER 28, 1976

Call Us Soon

PH: (717) 397-6191, 569-2084, 626-5659