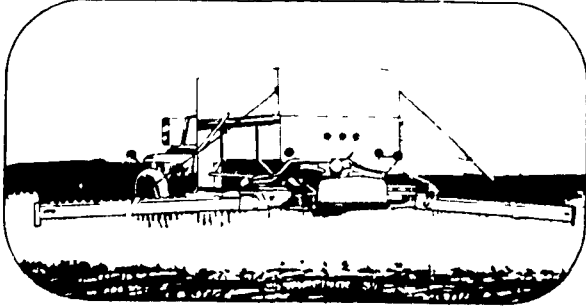


READ LANCASTER FARMING FOR FULL MARKET REPORTS

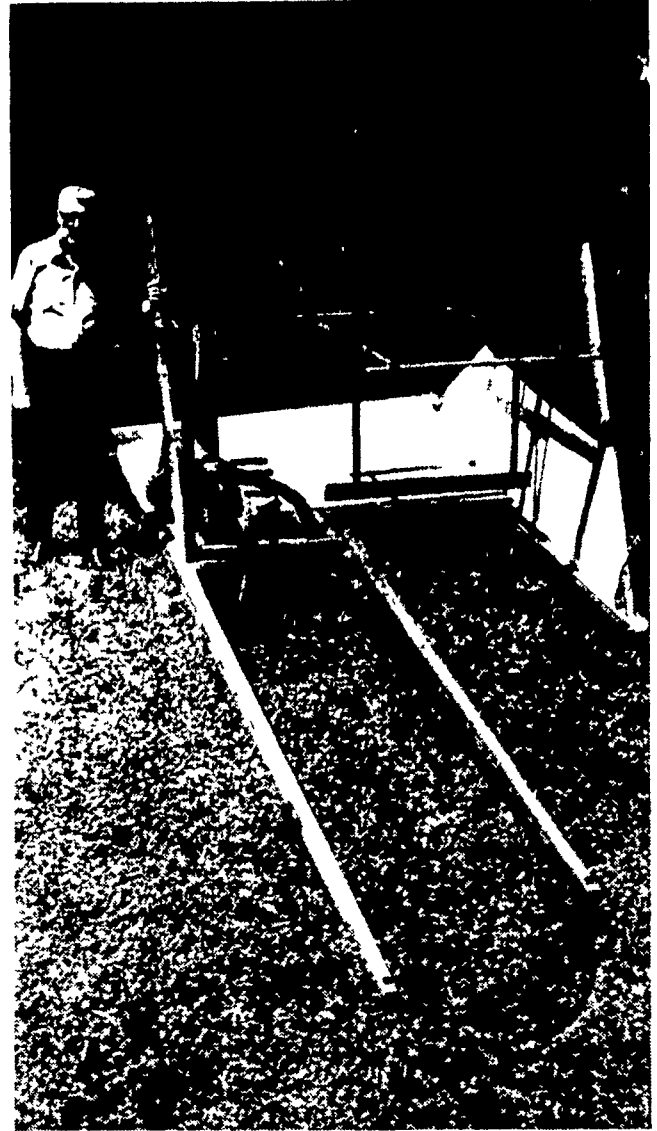
Apply lime in the fall for a better crop next summer

Fall liming assures proper limestone distribution in the soil ready for spring planting. The freezing and thawing of winter aid in the process of limestone dissemination. So why wait correct your soil deficiency now by liming and reap a bigger harvest next summer.



BLUE BALL 354 4125
GAP 442-4148

**MARTIN
LIMESTONE
INC.**



Newest model of the oldest farm machine in the world is this recently completed re-creation of Cyrus McCormick's 1831 reaper. Dr. Howard F. Conn of Uniontown, Pa., built the harvester in partnership with Joseph G. Rider, a Smithfield, Pa. carpenter. The reaper was on display at the Fayette County Fair in Uniontown. Wooden gears, from which molds could be made to pour cast iron gears, were built but found too inexact. Dr. Conn then arranged to borrow gearing from the reaper on display at the McCormick National Historical Landmark and museum at Steeles Tavern, Va., to make molds for new gears. Rider also built the peg-toothed wooden rake, in the picture, like the ones used to sweep cut grain from reaper platform.



DIRECT DEPOSIT OF YOUR SOCIAL SECURITY CHECKS

FOR PEOPLE WHO HAVE OTHER THINGS TO DO THAN GO TO THE BANK.

By having your social security checks deposited directly into a Farmers First Bank account your money is available to you even if you can't come to the bank. That's really convenient when you're away from home for vacation, illness or just having a good time with your grandchildren.

And you won't need to worry about losing your check or having it stolen when it's safely in your Farmers First checking or savings account.

Why not sign up today . . . because we think you should be able to choose when you want to go to the bank.

The People Bank

**FARMERS
FIRST BANK**

Member F D I C

EPHRATA, EPHRATA NORTH,
INTERCOURSE, LANC SHOP
PING CENTER, LINCOLN,
LITIZ, MARIETTA, NEFFS
VILLE, PARK CITY

This service is provided free of charge by Farmers First Bank.

Midwesterners eligible for funds

WASHINGTON, D.C. - The U.S. Department of Agriculture (USDA) announced recently that farmers in Minnesota, North Dakota, South Dakota, and Wisconsin who suffer losses from drought during the 1976 crop year are eligible for emergency loans through the Farmers Home Administration (FmHA) to reestablish farming operations and pay operating expenses.

USDA determined that the incidence of drought covers the crop year which ends on December 31, 1976. This determination amends the previous Presidential declaration of drought emergency in the four states, in which no designated period of drought was indicated.

Counties included under the drought designation (see lists attached) total 64 in South Dakota, 60 in Min-

nesota, 43 in Wisconsin and 21 in North Dakota.

Emergency loans are made to farmers to recover from designated natural disasters. Loans based on actual losses are repayable in their entirety with 5 per cent interest. Loans for renewed operations are made at rates prevailing in the private market for comparable credit. All loan applicants must be unable to get sufficient credit from local commercial sources.

SERVICE IS OUR BUSINESS

READY MIX CONCRETE FOR EVERY PURPOSE



A DIVISION OF A. G. KURTZ & SONS INC.

●Crushed Stone ●Ready Mixed Concrete ●Asphalt Paving

● QUALITY CONTROLLED CONCRETE ● RADIO EQUIPPED FLEET
● MIX UNIFORMITY THRU AUTOMATION ● SATURDAY MORNING DELIVERY

Prompt Courteous Service

DENVER RD#3 . . . PHONE 267-7591