

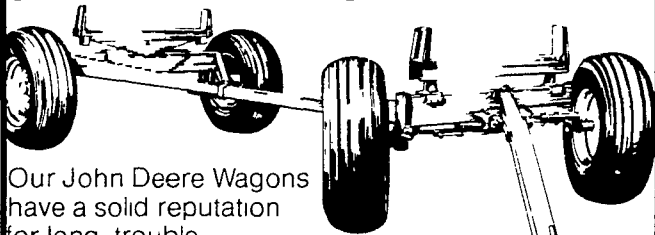
**READ LANCASTER FARMING FOR FULL MARKET REPORTS**

**This giant-capacity forage harvester is built for self-propelled power**



John Deere Self-Propelled 5200 and 5400 Forage Harvesters are not just pull-type units with engines added. They're SP-built with 9-knife 24-inch-diameter cutterheads. Exclusive J-knives can be held more rigidly. Recutter screens have a larger surface area. Feed rolls are slip-clutch protected. The power units are loaded with features, too. We have one of these giant SP forage harvesters ready for you right now. Come by soon and check it out in person.

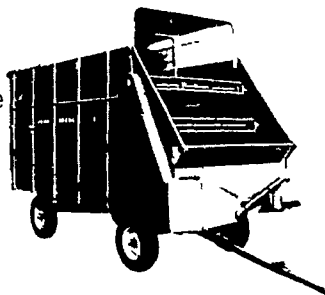
**Put a dependable John Deere Wagon into your harvesting lineup**



Our John Deere Wagons have a solid reputation for long trouble-free service. But it didn't just happen—their durability is built in. Rigorous test-track work helps John Deere engineers give you such things as high-quality spindles. Inspect one of these durable wagons soon.

**Here's the way to high-volume forage handling**

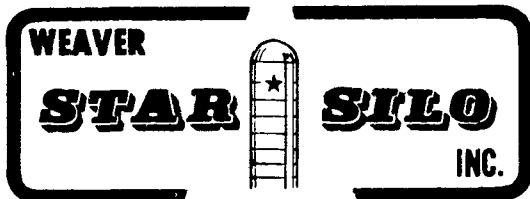
Over the years, John Deere self-unloading wagons have earned a reputation for dependable high-volume forage handling. Inspect one on our lot and you'll see why. They've got the capacity to keep up with modern forage harvesters. And you'll find wood construction that stands up in the field. You have the choice of front unloading only or front-and-rear unloading. You'll also like the handy safety bar that instantly stops the beaters and conveyor.



- |   |   |
|---|---|
| <b>Landis Bros. Inc.</b><br>Lancaster 717-393-3906  | <b>A.B.C. Groff, Inc.</b><br>New Holland 717-354-4191                               |
| <b>Adamstown Equipment Inc.</b><br>Mohnton, RD2, PA 19540<br>(near Adamstown)<br>215-484-4391 | <b>Pikeville Equipment Inc.</b><br>Oyster Dale Road<br>Oley RD2, PA<br>215-987-6277 |
| <b>M. S. Yearsley &amp; Sons</b><br>West Chester 215-696-2990                                 | <b>Neuhaus'es, Inc.</b><br>Glen Rock, PA<br>717-235-1306                            |
| <b>Agway, Inc.</b><br>Chapman Equipment Center<br>Chapman, PA<br>215-398-2553                 | <b>Stanley A. Klopp, Inc.</b><br>Bernville, PA<br>215-488-1510                      |
| <b>Shotzberger's Equipment</b><br>Elm, PA<br>717-665-2141                                     | <b>I. G.'s Ag Sales</b><br>Silverdale, PA 18962<br>215-257-5136                     |
|   | <b>Kermit K. Kistler</b><br>Lynnport, PA<br>215-298-3270                            |



*"Hitch your silo blower to a star"*



*"Honey Pak" "Tapper" "Energy Pak"*

R.D. 4 MYERSTOWN, PA 17067  
CALL COLLECT 717-866-5708

Eight tractors, eight wagons, and close to 200 visitors wound their way through Miles Fry's Nursery, near Ephrata, recently, while participating in a field day. Fry has achieved national recognition primarily through his work with hybrid poplars, and was active in dairy farming as late as the mid-50's.



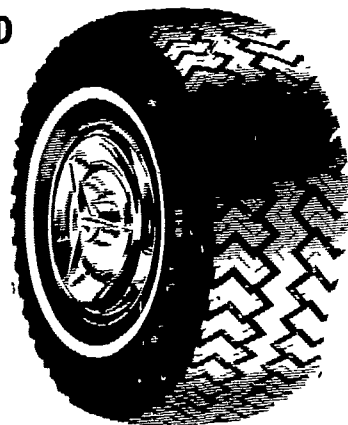
The word "bride" is derived from an ancient Teutonic word meaning "to cook."

**GET SET FOR SNOW  
SNOW TIRES WILL BE IN SHORT SUPPLY**

**GILLETTE FIBERGLASS BELTED**

TUBELESS SIZE	WHITEWALL PRICE
A78-13	\$26.34
F75-14	29.71
G78-14	30.38
H78-14	32.24
G78-15	31.06

+FET



**MUD & SNOW TRUCK TIRES**

**GILLETTE TRUCK SNOW TIRES**

SIZE	PLY	PRICE
670-15	6	\$34.95
700-15	6	37.95
700-16	6	38.95
750-16	8	47.25
800-16.5	8	46.15
1000-16.5	8	59.68

+FET

**STEEL BELTED WINTER RADIAL FOR IMPORTED CARS**

SIZE	PRICE
155-12	\$34.95
155-13	34.95
165-13	36.95
165-14	39.95
175-14	47.95
165-15	40.95
185-15	50.95

+FET

**Continental contact**

PRICES EFFECTIVE ONLY UNTIL OCTOBER 30, 1976

ALL TIRES MOUNTED AND BALANCED FREE

**ACTION TIRE SALES INC.**

15 NEW CHARLOTTE ST.,

MANHEIM, PA

PHONE 665-4602

**RADIAL TIRE SPECIALISTS**