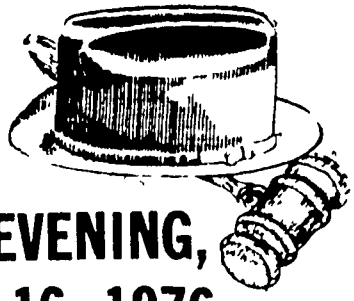


Know Where the Activities Will Be?  
Read the Farm Women Calendar.

**HAT & GAVEL  
AUCTION CO.**

1 Mile North of Lititz on  
Route 501



**THURSDAY EVENING,  
SEPTEMBER 16, 1976 5:30 P.M.**

**COLLECTIBLES, HOUSEHOLD, COINS**

Child's roll top desk, Gooseneck rocker, blanket chest, wardrobes, leather electric chair, like new; single bed, Power Craft reel mower, corner wood brace, pressed glass, china, and lots, lots more

Coins will be sold at 8:00 P.M.

WE SPECIALIZE IN PUBLIC AUCTIONS,  
ESTATES AND ANTIQUES.

**WILBUR H. HOSLER**

306 Owl Hill Rd., Lititz

**Harold K. Galebach, Partner**

HAT & GAVEL AUCTION CO. SELLS  
ON COMMISSION - CALL 626-0254

Receiving Hours: Monday, Noon to 9 P.M.,  
Wednesday, 9 A.M. to 5 P.M., Tuesday, Pickup Day

**Dairy market schedule announced**

NEW YORK, N.Y. - A new schedule of reports on wholesale dairy markets was announced by Gerald J. Foskett, Eastern area representative of the Dairy Market News Branch of the U.S. Department of Agriculture's Agricultural Marketing Service.

These reports are available each day by calling area code 212, 683-3780 in New York City. Except for Friday all messages are available at 12:30 p.m. The first Friday report will be available at 9

a.m.; the others at 12:15 p.m. The schedule follows: MONDAY - National Casein Review; TUESDAY - New York Wholesale Butter Prices, Chicago Wholesale Butter Prices, Comments-Eastern Print Butter, Comments-Foreign Cheese, Comments and Selected Prices - Eastern Cheese Markets; WEDNESDAY - The Butter and Cheese Production Report; THURSDAY - New York Wholesale Butter Prices, Chicago Wholesale Butter

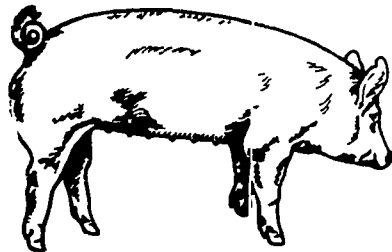
Prices, Summary of the Eastern Fluid Milk and Cream Review, including New York City Spot Milk Prices, TriCity Spot Cream Prices (Boston, New York, Phila.), and TriCity Spot Condensed Skim Milk Prices; FRIDAY - Eastern Dry and National Evaporated Milk Review, Comments and Prices, New York Mercantile Butter Prices, Chicago Mercantile Butter Prices, National

Cheese Exchange Prices on Cheddar and Swiss.



LAWRENCE, LEON AND THOMAS ARNOLD

**4th. PRODUCTION  
SALE**



of  
Yorkshires  
Durocs

50 Bred Gilts, all hand mated, due dates guaranteed. 25 Boars, 40 Open Gilts

**Friday Evening, Sept. 17, 1976**

7:00 p.m.

Sale to be held at the  
**Lebanon Area Fairgrounds**

Cornwall & Evergreen Roads, 1 1/2 miles South of Lebanon, Penna.

Auctioneer - Col. Harry Bachman - Annville, Pa.  
For catalogue write to Leon L. Arnold R. D. 1, Box 54, Lebanon, Penn. 17042  
Phone 717-273-5880

Free Lunch

**PUBLIC SALE**

On the farm located on Route 26 about 3 miles northeast of Frederick, near Ceresville in Frederick County, Maryland

**SATURDAY, SEPTEMBER 18**

10:30 A.M.

**MACHINERY - DAIRY EQUIPMENT -  
DAIRY HERD - 52 ACRES GROWING CORN -  
5,000 BALES HAY**

**TRACTORS:**

300 Int. Utility tractor with loader  
Super C tractor with cultivators and 2 gang plow

**HAY EQUIPMENT**

Int. No. 100 mower (2 pt. hitch)  
Int. Hay Conditioner  
Int. 5-bar hay rake  
Int. No. 47 baler w-thrasher  
Mayrath elevator  
Flat bed wagon

**OTHER MACHINERY AND EQUIPMENT**

Two gang 14" plow with 3 pt. hitch, 32 disc harrow, Int. spring tooth harrow, No. 249 Int. 2-row corn planter with fertilizer attachments, Int. No. 45 manure spreader, 6 ft. scraper blade, air compressor, portable elec. grinder, 2 riding lawn mowers, garden tractor with attachments, misc. small tools.

Corn - 52 acres

40 acres were planted in middle of May  
12 acres of 90-day corn planted in June

Hay - Approx. 5,000 bales

Approximately 2500 bales of alfalfa and 2500 bales of mixed hay - to be sold in five or six different lots.

**DAIRY EQUIPMENT**

300 gal. Mojonner milk tank and compressor, DeLaval pipeline milkers complete for 30 stall barn including vacuum pump and motor, lines, 4 units of milkers, etc., hot water heater.

**COMPLETE HERD DISPERSAL**

65 Cows - 4 Bred Heifers  
T.B. and Blood tested for Interstate Shipment

These cows are young and a number recently fresh or springing with others due throughout the year. This herd has never been forced to produce to their potential. They will please their new owners. This is an excellent buying opportunity.

Order of sale: Small equipment, machinery, dairy equipment, hay and corn, cattle.

**AUSTIN W. MAIN**

Route 1  
Frederick, Maryland

A. Doty Remsburg, Auctioneer  
Norman D. Hill, Associate  
Jefferson, Maryland

**PUBLIC AUCTION**

**OF REAL ESTATE  
SAT., SEPT. 25, 1976**

At 1 P.M.

Located along Charming Forge Rd., about 2 mi. North of Rt. 422, Robesonia, Heidelberg Twp., Berks Co., PA.

197 acre farm w-limestone soil, stone bank barn (set up for cattle feeding), corn barn and implement shed, garage, gorgeous old stone farmhouse (completely remodeled), lg. living room w-stone fireplace, lg. kitchen and dining area w-open beams & fireplace (kitchen has all built in appliances & brick center island); 2nd floor - 3 bedrooms (1 w-fireplace), lg. center hall & bath, plenty of closet space - hardwood floors thru-out, O.H.W. heat - a horse corral, beautiful trees & shrubs, pond & macadam circle driveway; this is an outstanding property w-a beautiful setting. For terms and appointments call:

**HORNING FARM AGENCY**  
Morgantown, PA  
215-286-5183

Estate of:

**JOHN W. EISENHAUER**

Executor: Bank of PA  
Atty: Norman Detra

Alvin and Elton Horning, Auctioneers  
For Broker participation Reg. by Sept. 24th.

**94 Holsteins & Farm Machinery**  
at

**PUBLIC AUCTION**

**Sat., Sept. 18, 1976**

at 11 A.M. Ringoes, N.J.

For Paul Quintavalle located 2 mi. E of Ringoes, N. J. on Rt. 514 1/2 mi. E of Rt. 202-31 from traffic light. 7 mi. S of Flemington, N. J. 7 m. N of New Hope, Pa. Arrows Posted!

12 Noon 94 hd. DHIA Tested Holsteins 3 Reg. 68 cows many young, 16 heifers from 4 mos. bred to Springers, 5 breeding age, 5 short yearlings. A top working herd of money making holsteins! Over 50 percent Bred for Fall Production 13 fresh recently, 23 hd. due Sept. thru Oct. 12 hd. due Nov. thru Dec. DHIA current ave. 12,900 M-470F 305d records 32 hd. from 12 to 15000 M, 14 hd. from 15 to 18000 M. 15 hd. from 450 to 550 F, 19 hd. from 550 to 732 F.

Attention A Reg Kingpin dtr. sells bred to Elevation and has in 105d 9,426M - 298 F milking 86 lbs. a day! Breeding NEBA and ABS Sires Represented - Kingpin, Merryking, Lucky, Jet Stream, AB Seaman, Don Auger Jo Jo and others. Service Sires Elevation, Jet Stream, Rise, Lucky Star, Supreme, Belshazzar and others. Records read at ringside! Pregnancy examined! T.B. and Blood tested and eligible for immediate interstate shipment.

11 A.M. Sharp! Farm Machinery, 1000 gal. Tank Dairy Kool Bulk Tank 6 HP. DeLaval 6 unit pipeline equipment for milk house only, auto washer, controls, milk pump and jar, tube, etc. DeLaval 240 ft. glass transfer line. DeLaval No. 76 milk pump. 92 cow 1 1/2" vac line, 6 DeLaval milkers new type, 2 Jamesway shuttle barn cleaners 220 ft. each, Jamesway Lq. manure elevator. Tractors - Farmall M w-hyd excellent, Farmall MD new rubber A-1, N.I. front end loader for M w-buckets & snow plow, Dion big box chuck wagon HD running gear, A.C. chuck wagon, Case 670 flail chopper, John Deere 13 hole grain drill on rubber A-1, IHC 4 row corn planter A-1, IHC 8 ft. hyd disc on rubber, IHC 3 btm plow, N.H. 516 205 bu. manure spreader. Crops 1000 bales Alfalfa hay. Plan now to attend and take advantage of this opportunity! Owner & auctioneer not responsible for accidents! Terms Cash or Good Check Sale Day! Lunch available!

Owner  
**Paul Quintavalle**  
Ringoes, N. J.

Sale Manager and Auctioneer -  
Col. Fred R. Daniel Auctioneers, Inc.  
Necharic Sta., N.J. 201-369-4784.

**AUCTION**

**FOR: EDWARD & BERYL DAVIS**

162 Burnside Avenue  
Norristown, Pa.

(Bet. Germantown & Ridge Pikes  
1/2 mi. No. of the center of Jeffersonville)

**WED., SEPT. 22, 1976**

9:30 A.M.

**ANTIQUES FURNITURE -**

2 ICE BOXES, Library Table, Wicker Love Seat, Iron Bed, rd. Oak Ext. Table, 1/2 spindle chr, butter churn, Rolltop Desk, Rope Bed. PRIMITIVES & COLLECTABLES - Tiffany type shade, lanterns, milk cans. Glassware & other misc. items.

**FARM MACHINERY &  
RELATED ITEMS -**

Int. Cub Cadet Riding Tractor w-mower & snowblade; '49 Chev. Panel Truck, Rotary Mower, Seeder, Pressure Tank, corn sheller, log chains, snowblower, chicken coops, milk cooler, S.S. buckets, Saddles, feed grinder, forage cutter, manure loader & cultivator for Farmall H, New Idea Manure Spreader, M.H. Corn Planter, Compressor, Alfalfa Seeder, corn binder.

**AUTO -**

'56 Chev. Station Wagon, 45,000 mi., current inspection.

TERMS - CASH

LUNCH

**SANFORD A.  
ALDERFER, INC.**

Real Estate Brokers And Auctioneers  
Harleysville, Pa. - 723-1171 or 256-8892