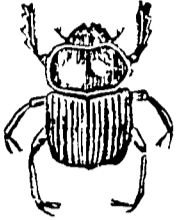


THE OLD FARMER'S ALMANAC

AUG. 30-SEPT 5, 1976

The summer loiters, lingering as it goes

Should have back-to-school clothes bought by now. Sam Houston elected President of Texas Sept 5 1836. First quarter of the moon Aug 31. Average length of days for the week 13 hours 5 minutes. Early snows closed Denver roads Sept 3 1961. First coast-to-coast TV Sept 4 1951. Cranberry harvest begins now. A lever-stir is the diamond dust heaven polishes its jewels with.



Ask the Old Farmer To till means to plow and otherwise cultivate the soil. I note that the steering apparatus of a boat is called a tiller. Why the similarity and how come? A N Bangor Maine

The tiller of a boat in original shape and design was a dead ring for the single-handled plows that the ancients used to steer. Incidentally they called this thing a tiller among other things.

OLD FARMER'S WEATHER FORECASTS

New England Early week unseasonably cool, cloudy in south and showers in north, latter part of week rainy in north and south and warmer

Greater New York-New Jersey Early part of week sunny and mild with below normal temperatures, clear and mild latter part, then heavy rain and warmer over weekend

Middle Atlantic Coastal Generally clear and pleasantly warm to start, heavy rain and warmer latter part, then showers over weekend

(All Rights Reserved Yankee Inc. Dublin N.H. 03444)

Greencastle

Greencastle, Pa. August 23, 1976

CATTLE 114. Compared with last Monday's market; Choice slaughter heifers 33.00-35.35, Good 28.00-32.00, Standard 24.50-28.00. Utility & High Dressing Cutter slaughter cows 28.00-29.35, Cutters 26.10-28.00, Canners 22.00-26.00, Shells down to 13.00. Yield Grade No. 1-2 slaughter bulls 30.50-33.25. Medium & Good feeder steers 30.00-33.50; Medium & Good 22.00-28.00; Medium & Good feeder bulls 21.00-30.00.

CALVES 233. Choice vealers 55.00-59.00, Good 40.00-45.50, Standard 32.10-40.00, Utility 90-120 lbs. 24.10-32.00. Farm calves, holstein bulls 90-120 lbs. 30.00-40.50; holstein heifers 70-110 lbs. 30.00-40.00.

HOGS 26. US No. 1-3 200-245 lbs. barrows & gilts 44.50-45.00. Boars 30.00-35.00.

FEEDER PIGS 12. US No. 1-3 20-40 lbs. feeder pigs 14.00-23.50 per head.

SHEEP 12. Not enough of any one grade to establish a market.

Dewart Auction

Dewart, Pa. August 23, 1976

CATTLE 205. Compared with last Monday's market, slaughter steers 25 cents to \$1 lower. Slaughter cows 25 cents to 50 cents lower. Choice No. 2-3 1000-1275 lbs. slaughter steers 35.75-37.50, one at 37.85, Good 32.25-35.00, Standard 26.50-31.75, few Utility 25.00-26.50. One Choice slaughter heifer at 37.50, couple Good 33.10 and 34.00, Standard 27.25-31.75, Utility 23.00-26.50. Utility & High Dressing Cutter slaughter cows 27.10-28.35, Cutters 25.25-26.75, Canners 22.10-25.25, Shells down to 20.00. Couple Good slaughter bullocks 33.25 and 33.50, couple Standard 30.25 and 30.50, one Utility at 25.50. One Yield Grade No. 1 1335 lbs. slaughter bull at 35.60; yield grade No. 2 950-1590 lbs. 33.25-34.85. Medium 300-550 lbs. feeder steers 23.75-30.75; Medium 300-650 lbs. feeder

heifers 23.00-30.50; Medium 325-600 lbs. feeder bulls 22.00-27.75.

CALVES 184. Vealers highly uneven. Choice vealers 52.00-57.50, Good 46.50-50.00, Standard 40.00-45.50, Utility 90-120 lbs. 29.00-37.50, 70-85 lbs. 24.50-30.00.

HOGS 215. Barrows & Gilts \$1.50 to \$1.75 higher. US No. 1-2 200-215 lbs. barrows & gilts 46.90-47.70, No. 1-3 190-235 lbs. 46.00-46.90, one lot No. 2-4 240 lbs. 44.50, No. 1-3 160-170 lbs. 42.85-45.50. Few US No. 1-3 350-480 lbs. sows 37.25-38.10, few No. 2-3 400-625 lbs. 32.50-32.75. Boars 27.50-30.75.

FEEDER PIGS 125. US No. 1-3 10-15 lbs. feeder pigs 17.50-19.00 per head, No. 1-3 25-35 lbs. 24.00-34.00, No. 1-3 40-50 lbs. 36.00-44.00 per head.

SHEEP 21. Choice 90-100 lbs. spring slaughter lambs 39.50-43.00, few Good 80-90 lbs. 36.00-39.50.

Joliet Cattle

August 26 Weekly Cattle

Friday through Wednesday's salable receipts 9,300, last week 9,487, last year 8,673. Slaughter steers 25 to 75 higher than last Friday. Heifers steady.

SLAUGHTER STEERS: High Choice and Prime 3-5 1175-1300 lbs. 36.00-37.50, 4, \$5 1250-1375 lbs. 34.50-36.75. Choice 2-4 1050-1250 lbs. 37.00-38.00, several loads 38.25 Monday. Choice 3-4 1175-1250 lbs. 36.00-37.25 Wednesday. Mixed Good and Choice 2-3 1000-1200 lbs. 35.00-36.50. Mixed Good and Choice Holsteins 2-3 1100-1300 lbs. 33.00-34.00. Good Holsteins 2-3 1000-1200 lbs. 31.50-32.00.

SLAUGHTER HEIFERS: Choice, few Prime, war 900-1050 lbs. 35.50-36.50, up to 36.75 Monday. Mixed Good and Choice 2-3 800-1000 lbs. 34.00-35.50. Good 2-3 700-950 lbs. 32.50-34.00.

August 25

CATTLE: 4000. Trading moderate on steers and heifers. Early sales of steers and heifers steady to 25 lower. Supply mostly Choice 2-4 1050-1300 lbs. steers and 25 percent heifers largely Choice 2-4 900-1050 lbs.

SLAUGHTER STEERS High Choice and Prime 3-5 1175-1375 lbs. 35.50-37.25. Choice 2-4 1050-1250 lbs. mostly 37.00-38.00; some 4 1175-1250 lbs. 36.50-37.25. Mixed Good and Choice 2-3 1000-1200 lbs. 35.00-36.50. Some Mixed Good and Choice Holsteins 2-3 1100-1300 lbs. 33.00-34.00. Good Holsteins 2-3 1000-1200 lbs. 31.50-32.00.

SLAUGHTER HEIFERS: Choice, few Prime 2-4 900-1050 lbs. 35.50-36.50. Mixed Good and Choice 2-3 800-1000 lbs. 34.00-35.50. Good 2-3 700-950 lbs. 32.50-34.00.

Leesport Auction

Leesport, Pa. August 25, 1976

CATTLE 315. Supply included 113 head feeder cattle. Compared with last Wednesday's market, slaughter steers: Choice and Prime 36.00-38.50, Choice 950-1100 lbs. 35.00-37.00, Good 33.00-35.00, Standard 31.00-33.00. Choice slaughter heifers 700-1000 lbs. 35.00-36.00, Good to Choice 33.00-35.00, Standard 28.00-33.00. Utility and High Dressing Cutter slaughter cows 27.00-29.50, Cutters 26.00-27.50, Canners 23.00-25.50, Shells down to 17.50. Choice

slaughter bullocks 35.00-37.50, Good 33.00-36.00, Standard 32.00-37.50.

CALVES 179. Choice vealers 55.00-60.00, Good 40.00-50.00, Standard 30.00-40.00, Utility 90-120 lbs. 25.00-30.00, 70-100 lbs. 20.00-32.00.

HOGS 243. US No. 1-3 200-230 lbs. barrows and gilts 46.00-47.00, No. 2-3 215-250 lbs. 45.00-46.00, No. 1-3 160-180 lbs. 44.00-45.00. US No. 1-3 300-650 lbs. sows 34.00-42.00. Boars 28.00-42.00.

FEEDER PIGS 218. US No. 1-3 feeder pigs per head top price up to 45.00.

SHEEP 6.

McCOY CATTLE COMPANY "FEEDER PIG BUYING POWER"

Check Our Prices Before You Sell Your Pigs We Have The Orders

Consign Your Pigs to

McCOY CATTLE COMPANY

Lancaster Stockyards

717-397-1411

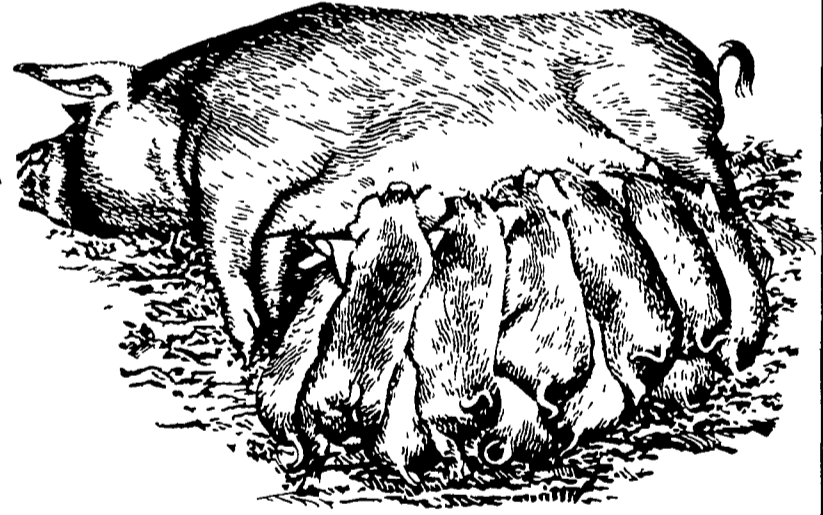
NEXT FEEDER PIG SALE

TUES., AUG. 31 — 1:00 P.M.

NEW HOLLAND SALES STABLES INC.

12 miles east of Lancaster on Route 23, New Holland, PA.

WEEKLY FEEDER PIG SALE IN AIR CONDITIONED SALES PAVILION



NEXT SALE

WEDNESDAY, SEPT. 1, 1976

SALE TO START PROMPTLY AT 1:00 P.M.

WE WILL RECEIVE YOUR PIGS ANYTIME FROM 7 A.M. WED. MORNING

State Graded. All pigs inspected by State Approved Veterinarian.

Commission Charge \$1.25 per head.

25¢ additional charge for tagging.

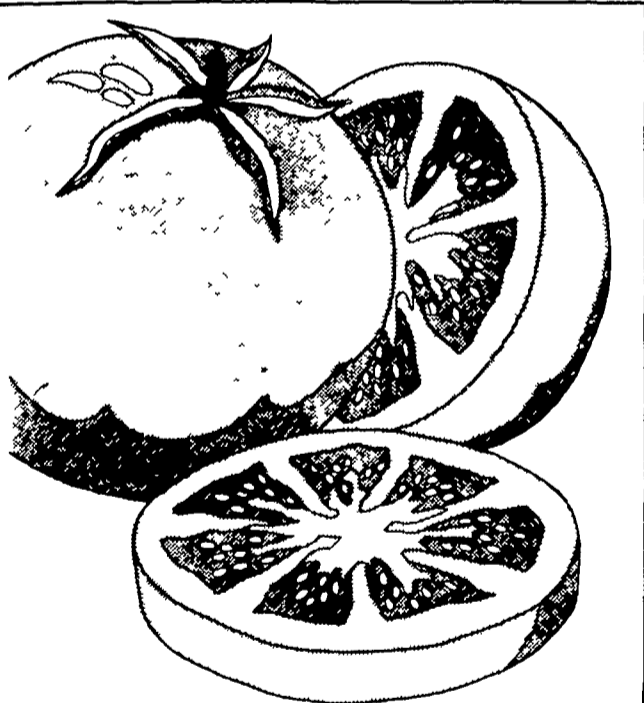
State tags available at our office for you to tag pigs at home to save 25¢ tagging charge.

Tags delivered if you call 717-354-4341

our office in advance.

CALF SALE TO BE HELD IN NEW SALES PAVILION EVERY THURSDAY AT 6:30 P.M.

NORMAN KOLB 717-397-5538 **ABE DIFFENBACH** 717-393-4464



Only BRAVO® controls all eight tomato fungus diseases.

Deliciously healthy tomatoes That's what you get for using Bravo 6F fungicide

Flowable Bravo is the one fungicide that controls early blight, late blight, gray leaf mold, gray leaf spot, anthracnose, Rhizoctonia fruit rot, Botrytis gray mold and black mold (California only)

You'll like its convenient flowable form Ask us for Bravo We're your local Diamond Shamrock supplier.

DISTRIBUTED BY

AGWAY INC. CENTRAL CHEMICAL CORP.

HELENA CHEMICAL CO. USS AGRI-CHEMICALS

MILLER CHEMICAL CO.

OR SEE YOUR LOCAL AG CHEMICAL SUPPLIER