

Real Estate

Real Estate

(31T) 250 Acre Farm, Adams County, approx. 225 acres tillable, ex. house and tenant house, 2 barns, other out buildings, grain storage, pond, lots of road frontage.

(11T) 94 Acre Farm, near Gettysburg, 2½ story all brick home built in 1916, 3 bedrooms, bath, kitchen, dining room, double living room, summer house, barn and other buildings, 2 car garage, 10 acres woods, long road frontage \$136,000.

Call
Mr. Bigham at

TOWN AND COUNTRY REAL ESTATE
717-642-5851

**NITTANY VALLEY
BRUSH VALLEY**
For Nittany & Brush Valley
Farms Call Us.

80 Acre General with Mobile Home Park. Montour Co.
120 Acre Beef Farm, stone farm house and rancher in Berks Co.

152 Acre General \$139,000. Clinton Co.

175 Acres, 2 farms, Clinton Co.

73 Acres, Mountain stream, trout pond \$78,000. Clinton Co.

128 Acre General \$65,000. Lycoming Co.

124 Acres, ranch house, \$124,000. Lycoming Co.

56 Acre General \$55,000. Northumberland Co.

95 Acres Beef Farm & exceptional nice house \$155,000. Columbia Co.

80 Acres, no buildings, \$80,000. Columbia Co.

CALL

WITWER REAL ESTATE

Ephrata, Pa.

717-733-4138

DEER HUNTING & FISHING CAMP in Huntingdon County. 22 acres wooded, with trout stream and 2 rental units. Also camping facilities. Excellent opportunity for interested party.

60 ACRE TRACT of mountain land at the base of mountain adjoining Beagle Club. Large timber has been removed. Priced at \$350 per acre. Dauphin County.

35 ACRE TRACT of mountain land at the base of mountain. Very nice stream and stream. \$650 per acre. Schuylkill County. **SOLD**

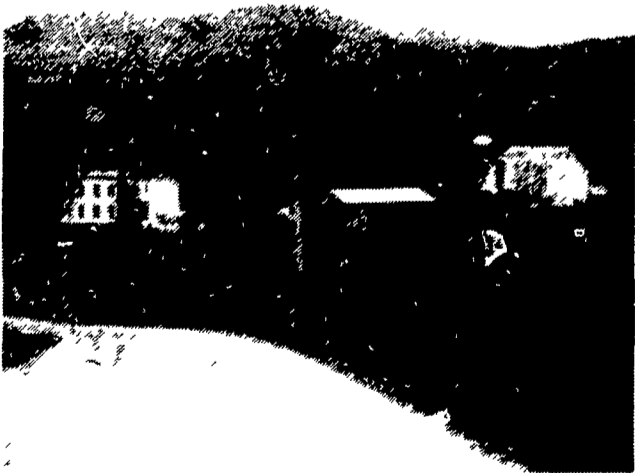
ARMSTRONG VALLEY, DAUPHIN COUNTY FARM with large barn, 2 homes, other necessary buildings, 125 tillable acres, stream and pasture. Farm has many possibilities.

**SLAUGH
AND ASSOCIATES**

Realtors/Insurers

733-6556

Associate Jesse D. Ziegler (717) 838-1257
Associate Dana K. Brosemer (717) 859-2775



NEW YORK FARM FOR SALE

Farm in beautiful Cherry Valley in upstate New York in the heart of farm country 10 miles south of Canajoharie. 145 acres choice farm land with a large, newly remodeled house. Large barn with 45 stanchions for cows with auto milk system & bulk tanks. Large silo, garage & 2 other bldg & Large pole barn. Creek & excellent water supply \$110,000.

Call or Write

PETER SPERLAZZA

649 Geneva Rd.
Waterloo, N.Y. 13165
1-315-539-9744

Real Estate

Real Estate

"PA. FARMS"

Columbia County, Pa. - 45 Minutes from Bloomsburg - Located in Beautiful Sweet Valley - 58 Acre Farm, 900 Frontage, 14 Tillable Acres - 44 Wooded, 7 Room House and Barn. Asking \$47,500

Columbia County, Pa. - 25 Minutes from Bloomsburg - Situated in Stillwater - 150 Acre Farm, 60 Rich, Tillable Acres Under Cultivation, 90 Wooded, with Stream, a 7 Room House, plus a Large Barn & Storage Shed. Asking \$120,000

GERALD L. BUSCH, REALTOR

188 Kelly St.

Luzerne, Pa. 18709

CALL ANYTIME OR WRITE:

1-717-288-2514



S.E. Minnesota Dairy Farm, 360 A, grade A, recently updated, New Addition 1974, Tie Stalls, New silos, Auto Feeding system, Commercial drying setup, - excellent 2 story home, double garage large machine shed, a real dairyman's dream. Plus many extras. Terms C-D or trade.

BUY-RITE REALTY INC.

ROCHESTER, MINNESOTA

Irv. Fahrenholtz, 507-288-6909 or 507-867-3014,

Lyndon Geselle 507-282-4082,

Gaylord Harris, Kasson, Mn. 507-634-7730,

Jerry Dallmann, Dodge Center, 507-374-6328

Additional S.E. Minn. Farms Available.

Montgomery County

Collegeville area, 2.2 acres beautiful stone house, 8 rooms and bath, hot water oil heat, very good barn. Must sell. \$69,500.00.

75 acres, \$350.00 per acre, large amount road frontage.

Upper Perkiomen Area, 3 acres, large stone and frame barn with creek on property. \$20,000.00.

9 acre farmette, large farm pond, stone and frame house, beautifully located with large barn and out-buildings. \$65,000.00.

9 acre wooded area, \$13,500.00.

Old Mill on 1 acre asking to be restored. \$10,000.00.

Commercial property, two greenhouses, large lot, 2½ story brick house, \$110,000.00.

Berks County

Commercial and residential 43 acres near Bally, 5 acres woodland with small cabin and spring.

8 acre farmette, 11 room frame house, steer barn and hog buildings. \$65,000.00.

Susquehanna County

Hunting ground, 165 acres, approx. 8 acre lake, \$550.00 per acre.

150 acres hunting ground, mostly wooded, accessible by road through most of property, \$550.00 per acre.

Bradford County

310 acres hunting ground, 70 acres open farm ground. \$320.00 per acre.

READY TO GO OPERATION - 350 acres, 200 acres tillable, 112 stanchion barn with pipeline milker and bulk tank, mechanical feeder; heifer barn and sheds. Two modernized houses. Very good soil. Outstanding herd of 182 cows and heifers, 630 lb. Fat average; with full line of modern machinery. Total price \$500,000.00, selling as one unit.

148 acre dairy farm, 54 stanchions, 2 silos, modern frame house, \$130,000.00.

105 acre dairy farm, 72 tillable, 31 stanchions, 2 silos, 7 room house, modern, in excel. condition. \$120,000.00.

Lehigh County

102 acre steer farm, barn, feed lot and silo. Large stone house, center entrance, ready to be renovated. \$160,000.00.

Lycoming County

Hunting ground, mostly wooded, 600 acres, \$550.00 per acre.

York County

68 acre dairy farm, \$100,000.00.

Union County

239 acre large double brick house, modern dairy barn, excel. condition, large stream on property. \$330,000.00.

Clinton County

Two adjoining farms available, 148 ac. dairy farm, 16 room house, 3½ baths, 3-car garage, frame barn, etc. \$125,000.00.

113 acre steer farm, 6-room frame house with 1½ baths, good creek, fenced areas. \$100,000.00.

OTHER FARMS AVAILABLE

Please Call and Tell Us Your Preference



Rt. 100
Hereford, PA 18056
Ph: 215-679-5919

Real Estate

Real Estate

CENTRAL PA. FARMS

New Listing - Centre County - 146 Acre Farm, 136 Acres tillable; with dairy barn, outbuildings, no house. Located approximately 8 miles west of State College. Priced at \$172,500 w-terms.

Montour County - Very productive 300 Acre grain farm, 285 Acres tillable. Very nice laying Limestone soil. Excellent house, 2 barns, complete grain drying facilities with dryer, storage bin & grain leg, 2 good springs, small stream, good road frontage, low taxes. Located near Limestoneville in excellent farming area, a picturesque farm. Reasonably priced at \$435,000. (\$1450 per acre).

New Listing - Huntingdon County - Good General, Beef, or Hog Farm, 160 Acres, 100 Acres Tillable, 30 Acres Pasture & 30 Woodland. Large double house, barn with liquid manure pit & cemented floor (fixed for finishing 200 hogs), 2 trench silos (cemented), excellent spring water, pond & productive soil. Only 40 minutes from Raystown Dam, the farm has good frontage & very low taxes. Equipment available & it adjoins state game lands. Priced at \$128,000. Owner financing with only 20 percent down.

Centre County - Penns Valley - Ten & one-half acres w- 2 yr. old modular, 3 bdrm. home w-full basement; attached deck; spring water & small barn. Located on Rt. 192, 6 mi. east of Centre Hall. Perfect place for horses, cows & kids. Priced at \$42,500.

Juniata County - Good 247 acre Dairy farm with approximately 200 Acres of tillable productive soil, complete with dairy facilities. Two houses in sound condition & excellent spring water (2 springs). Location 3 miles east of Mifflintown. Priced at \$260,000 with 7 percent terms.

Clinton County - 151 acre farm suitable for dairy, or livestock operation. 110 acres tillable, good 6 bedroom house, large bank barn, good condition, spring water. \$125,000 with terms.

Lycoming County - 460 A Dairy Farm. Approximately 185 acres tillable. Level bottom ground, 30 A Pasture, 245 A woodland w-gd. timber. Excellent 2 story house with aluminum siding, barn w-free stall barn attachment (90 free stalls), 20x60 Harvestore Silo w-provision for bunk feeder. 2 streams & owner financing available. Priced at \$250,000. Available this fall or next spring. Owner financing at 7 percent.

CENTRAL PA. LAND

Ideal for Weekend Relaxation

Many properties have terms available

Centre County

189 Acres - wooded, adjoining State ground - privacy - could be split - \$72,765.

10.29 Acres - wooded, new barn, nice location - \$44,000

33 Acres - clear ground near Colyer Dam - \$33,000

68 Acres - wooded, good hunting area - \$30,600

218.9 Acres - wooded ground, stream, good hunting - Priced at \$350 an acre.

100 Acres - wooded - two springs, excellent cabin - excellent hunting area - \$60,000

39 Acres - wooded - frontage on Penn's Creek - \$17,000

22 Acres - tillable ground - lays nicely - \$22,000

100 Acres - pond, orchard and woodland - excellent hunting and fishing - \$75,000

35 Acres - two acres clear - balance wooded - some nursery stock - \$21,000

150+ Acres - light timber - good bird hunting - electricity available - \$250-A

Clearfield County

19.86 Acres - woodland - suitable for cabin near Clearfield - \$20,000

Blair County

110 Acres - wooded with stream near Tipton - \$77,000

**ARE YOU PLANNING TO SELL
YOUR FARM?**

Kissinger Leonard & Heim can offer you

*A full time farm sales staff specializing in farm sales

*Extensive advertising & promotion of your farm

*Over 35 years of actual farming experience (2 salesmen are presently involved in farming operations)

*5 years of Agricultural Lending experience with both FmHA & Farm Credit

*Advice on the best way to sell your farm to maximize your net returns

We Invite Your Inquiry
At No Obligation to You Of Course



FARM & LAND DEPARTMENT

Evenings Call

Don Myers

PH (814) 422-8111

Fred Strouse

PH (814) 364-1705

F J Kissinger

PH (814) 466-7372

245 South Allen St.

PH: (814) 234-4000

State College

"Serving Central Pa. Since 1933"