

Livestock market and auction news

Lancaster Market

Monday, August 23
Cattle Calves Hogs Sheep

| | | | | |
|-----------------------|------|-----|-----|----|
| Today | 1486 | 196 | 723 | 66 |
| Last Monday | 1120 | 142 | 508 | 22 |
| Last Year | 927 | 219 | 935 | 34 |
| Monday's Auction | 1180 | 241 | 799 | 68 |
| Last Monday's Auction | 821 | 170 | 510 | 40 |

CATTLE: Compared with last Wednesday slaughter steers slow, steady to 50 lower instances 75 lower with most decline noted on high Choice and Prime; slaughter heifers and cows steady; bulls slow, 50-1.00 lower.

SLAUGHTER STEERS: High Choice and Prime 3-4 1100-1400 lb. 37.50-39.00, couple 1170 lb. 39.50, 4-5 1175-1500 lb. 34.25-37.10; Choice 2-4 950-1350 lb. 36.50-38.50; Good and Choice 2-3 950-1350 lb. 36.00-37.50; Good 34.00-36.50.

HOLSTEIN STEERS: Choice 2-3 1200-1500 lb. 32.50-34.00; Good and Choice 1100-1400 lb. 32.00-32.50.

SLAUGHTER HEIFERS: Few Choice 3 1000-1170 lb. 37.80-39.10, Choice 2-4 850-1050 lb. 35.00-37.00; Good 2-3 30.00-34.50.

COWS: Utility and Commercial 2-4 24.00-26.50, few 26.75-27.85; Cutter 1-3 23.00-25.50; Canner to low Cutter 21.00-23.00.

BULLS: Yield grade 1-2 1200-1800 lb. 33.00-36.10, 900-1200 lb. 29.00-33.00.

VEAL CALVES: Steady to firm.

VEALERS: Choice and Prime 66.00-77.50; Choice 54.00-66.00; high Good and low Choice 44.00-55.00; Good 37.00-45.00; Standard and Good 85-110 lb. 29.00-39.00; Utility 65-90 lb. 22.00-30.00, few 50-65 lb. 15.00-20.00.

SHEEP: Slaughter lambs

Vintage Market

Tuesday, August 24
Cattle Calves Sheep

| | | | |
|--------------|------|-----|----|
| Today | 1197 | 804 | 34 |
| Last Tuesday | 798 | 644 | 25 |
| Last Year | 975 | 924 | 39 |

CATTLE: Compared to last Tuesday slaughter steers slow, 50-1.00 lower with Choice and Choice and Prime 4-5 1300-1500 lb. steers 1.50-2.00 lower; slaughter heifers weak to 50 lower; bulls slow, 50-75 lower; cows scarce, steady to 1.00 higher with most advance on Cutter grade.

SLAUGHTER STEERS: High Choice and Prime 3-4 1000-1300 lb. 37.50-38.75, 25 head 39.00-40.00, couple head near 1200 lb. 40.50; 4-5 1300-1550 lb. 34.00-36.50; Choice 2-4 950-1350 lb. 35.50-37.50, 4-5 1200-1550 lb. 33.00-36.00; Good and Choice 2-3 950-1350 lb. 35.00-36.50; Good 2-3 33.50-36.00.

HOLSTEIN STEERS: Choice 2-3 1200-1600 lb. 32.50-33.85; Good 31.60-33.00.

SLAUGHTER HEIFERS: Choice 2-4 800-1050 lb. 35.00-37.60; Good 2-3 32.00-35.00.

COWS: Utility and Commercial 2-4 25.00-28.35; Cutter 1-3 24.00-26.50; Canner and low Cutter 19.75-24.00.

BULLS: Yield grade 1-2 1300-1800 lb. 32.00-35.85, yield grade 1-2 1000-1300 lb. 29.00-32.00.

VEAL CALVES: Steady to 2.00 higher except weights under 100 lb. slow, weak to 5.00 lower.

VEALERS: Choice and Prime 62.00-78.00; high Good steady to firm; slaughter ewes steady.

SPRING LAMBS: Choice 80-100 lb. 40.00-43.00; Good 36.00-40.00.

SLAUGHTER EWES: Cull to Good 11.00-19.00.

Lancaster Auction

Wednesday, August 25
Cattle Calves Hogs Sheep

| | | | | |
|--------------------------|------|-----|-----|----|
| Today | 911 | 93 | 524 | 2 |
| Last Week | 793 | 93 | 506 | 27 |
| Last Year | 1259 | 108 | 543 | 28 |
| Wednesday's Auction | 901 | 115 | 371 | 3 |
| Last Wednesday's Auction | 744 | 127 | 508 | 27 |

CATTLE: Compared with last Monday slaughter steers slow, 50-1.00 lower; heifers weak, 50 lower; cows and bulls steady, to 1.00 higher.

SLAUGHTER STEERS: High Choice and Prime 3-4 1000-1350 lb. 37.00-38.35, individual yield grade 2 1195 lb. 38.85, 4-5 1150-1450 lb. 33.50-36.00; Choice 2-4 900-1350 lb. 35.50-37.50; Good and Choice 2-3 950-1350 lb. 35.00-37.00; Good 33.50-35.50.

HOLSTEIN STEERS: Choice 2-3 1200-1500 lb. 32.50-34.00.

SLAUGHTER HEIFERS: Few Choice 2-4 850-1100 lb. 34.50-37.00; Good 2-3 30.00-34.50.

COWS: Utility and Commercial 2-4 25.00-27.60; Cutter 1-3 23.50-26.00; Canner and low Cutter 22.00-23.50.

BULLS: Yield grade 1-2 1300-1800 lb. 33.00-36.25, 900-1300 lb. 29.00-33.00.

VEAL CALVES: Over 110 lb. steady to firm; however, under 110 lb. slow, 2.00-6.00 lower.

VEALERS: Choice 54.00-63.00; high Good and low Choice 44.00-55.00; Good and Choice 41.00-55.00; Good 35.00-42.00; Standard and Good 90-105 lb. 26.00-35.00, 75-90 lb. 19.00-27.00; Utility 70-90 lb. 15.00-22.00, 50-70 lb. 10.00-15.00.

RETURNED TO FARM: 90-115 lb. Holstein bulls 32.00-35.50.

SHEEP: Insufficient volume of any one class for an adequate market test; however, few sales steady.

SPRING LAMBS: Choice and Prime 70-100 lb. 43.00-46.00.

SLAUGHTER EWES: Utility and Good 12.00-20.00.

New Holland

Thursday, August 26
Cattle Calves Sheep

| | | | |
|---------------|------|-----|----|
| Today | 1099 | 692 | 20 |
| Last Thursday | 1227 | 614 | 21 |
| Last Year | 1195 | 555 | 59 |

CATTLE: Compared to last Thursday slaughter steers slow, 50-1.00 lower instances 1.50 lower; heifers scarce, steady; cows and bulls fairly active, cows 50-1.50 higher and bulls 1.00-2.00 higher.

SLAUGHTER STEERS: High Choice and Prime 3-4 1100-1350 lb. 37.00-38.50, few 38.25-39.00, individual yield grade 2 1210 lb. 40.25; Choice 2-4 950-1350 lb. 35.50-37.00; high Good and low Choice 2-3 35.00-37.00; Good 33.00-35.50.

HOLSTEIN STEERS: Choice 2-3 1200-1500 lb. 32.50-34.00; Good and Choice 32.00-32.50; Good 2-3 1100-1500 lb. 31.00-32.50.

SLAUGHTER HEIFERS: Individual Prime 3 1000 lb. 38.75; Choice 3 900-1100 lb. 37.00-38.00.

COWS: Utility and Commercial 2-4 26.00-28.00, few 28.25-30.00; Cutter 1-3 24.00-27.00; Canner to low Cutter 21.75-24.00.

BULLOCKS: Choice 2-3 1000-1250 lb. 35.00-37.00; Good and Choice 33.00-35.50.

BULLS: Yield grade 1-2 1300-1800 lb. 33.00-37.00, individual 37.75; yield grade 1-2 900-1300 lb. 29.00-33.00.

VEAL CALVES: High Choice and Prime firm to 3.00 higher, other grades weak to 4.00 lower.

VEALERS: High Choice and Prime 59.00-70.00, few near 300 lb. 73.00-80.50; Choice 47.00-58.00; high Good and low Choice 41.00-49.00; Good 31.00-42.00; Standard and Good 90-105 lb. 25.00-34.00, 70-90 lb. 21.00-26.00; Utility 50-70 lb. 10.00-17.00, 70-90 lb. 17.00-21.00.

37.00-45.00; Standard and Good 85-110 lb. 28.00-38.00; Utility 65-90 lb. 18.00-28.00, 50-65 lb. 12.00-19.00.

SHEEP: Insufficient volume for a market test.

Lancaster Weekly

Friday, August 27
Cattle Calves

| | | |
|-----------|------|------|
| This Week | 4693 | 1785 |
| Last Week | 3590 | 1433 |
| Last Year | 5149 | 1648 |

CATTLE: Compared with last week's close slaughter steers 50-1.50 lower with Choice and Choice and Prime 4-5 1300-1500 lb. steers 2.00 lower to a narrow demand, Holstein steers steady; heifers scarce, steady to 50 lower; cows fairly active, 50-1.50 higher; bulls closing 1.00-2.00 higher.

SLAUGHTER STEERS: Closing sales high Choice and Prime 3-4 1100-1350 lb. 37.00-38.50, near 40 head 39.00-40.00, 4-5 1150-1550 lb. 33.50-36.50; Choice 2-4 950-1350 lb. 35.50-37.50, Choice 4-5 1200-1550 lb. 33.00-36.00; Good and Choice 2-3 950-1350 lb. 35.00-37.00; Good 2-3 33.00-36.00.

HOLSTEIN STEERS: Choice 2-3 1200-1600 lb. 32.50-34.00; Good 1100-1500 lb. 31.00-33.00.

SLAUGHTER HEIFERS: Individual Prime 3 1000 lb. 38.75; Choice 2-4 850-1100 lb. 34.50-38.00 mostly 35.50-37.00.

COWS: With the upturn closing sales Utility and Commercial 2-4 26.00-28.00, few 28.25-30.00; Cutter 1-3 24.00-27.00; Canner to low Cutter 21.75-24.00.

BULLS: Yield grade 1-2 1300-1800 lb. 33.00-37.00, individual 37.75; yield grade 1-2 900-1300 lb. 29.00-33.00.

VEAL CALVES: Closing sales High Choice and Prime

firm to 3.00 higher, grades weak to 4.00 lower.

VEALERS: High Choice and Prime 59.00-70.00, few near 300 lb. 73.00-80.50; Choice 47.00-58.00; high Good and low Choice 41.00-49.00; Good 31.00-42.00; Standard and Good 90-105 lb. 26.00-35.00, 70-90 lb. 21.00-27.00; Utility 50-70 lb. 10.00-15.00, 50-70 lb. 17.00-21.00.

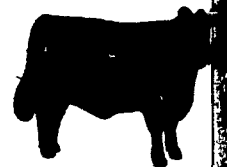
RETURNED TO FARM: Closing sales 100-115 lb. Holstein bulls 28.00-40.00.

Thomasville

August 25, 1976
Market report available for press time

Baltimore USDA

No market available at press time.



have a nice weekend



HAY, STRAW AND EAR CORN SALE

Every Wednesday at 12 Noon

HARVEY Z. MARTIN

North Maple Ave., Leola, PA
Home Phone 215-445-5303
We Buy On Orders.
Bus. Phone Wed. Only
717-656-7270

At David Good's Farm Equipment Sale
Leola, PA

LANCASTER STOCKYARD HOLIDAY SCHEDULE



No Cattle Auction
Labor Day, Sept. 6.

Special Cattle Sales
Friday, Sept. 3rd.

SLAUGHTER SALE - 10:00 a.m.
STOCKER & FEEDER SALE - 12:00 noon
Hog Auction as usual Mon. Sept. 6.

NEXT FEEDER PIG SALE

AUG 31 - 1 P.M.

(Chutes open at 6 A.M.)

PRIVATE TREATY DAILY
LANCASTER STOCKYARDS, INC.
(717) 394-2611



VINTAGE SALES STABLES, INC.

BULLS, STEERS,
BUTCHER COWS,
LAMBS AND VEAL CALVES
SOLD ON COMMISSION

SALE EVERY TUESDAY 11 A.M.

HOG SALES
WEEKLY - WED. & SAT. 9 A.M.

STATE GRADED FEEDER PIG SALE

1ST & 3RD FRIDAY.

(\$1.00 a head Commission)

EVERY THURSDAY - 1 P.M.

HAY & STRAW SALE

Get calves in early for grading & weighing. No weight loss.

FOR MARKETING INFORMATION
PHONE AREA CODE 717-442-4181

Home Phone 215-458-5060
L. Robert Frame, Manager

Box 100

10 miles East of Lancaster on Rt 30

Paradise PA

B & R CATTLE CO.

Washington Boro, PA
17582
Office Phone
(717) 872-5491

Specializing in
Stockers & Feeders

John Bowman

Ph: (717) 653-5728

Ron Ranck

Ph: (717) 656-9849

NEW HOLLAND The Action Auction

AUCTIONS make the difference in marketing livestock!

NEW HOLLAND makes the difference in auctions!

MONDAY'S ACTION.

8 00 A.M. - Fat Hogs
10 00 A.M. - Horse Sale
11 00 A.M. - Hay Straw & Ear Corn
2 30 P.M. - Fat Steers Bulls Cows & Veal

WEDNESDAY'S ACTION.

12 00 Noon - Hay Straw & Ear Corn
12 30 P.M. - Dairy Sale
1 00 P.M. - Feeder Pig Sale

THURSDAY'S ACTION:

11 00 A.M. - Beef Sale
Order of Sale - Bulls - Fat Steers - Cows, Veal
6 30 P.M. - Calf Sale

NEW HOLLAND SALES STABLES INC.

New Holland, PA

Abram W Diffenbach, Manager

Phone 717-354 4341

LEBANON VALLEY LIVESTOCK MARKET, INC.

1 mile East of
Fredericksburg
along Route 22

PHONE JONESTOWN
865-2881

Sale every Tuesday at
P.M. starting with feeder
and pigs.