



Lancaster Farming Photo by Dieter Kreg

This new building, just north of Lancaster along Route 72, and across from a corn field, is the new home for Central Tractor Parts, which has been a

part of Lancaster County agribusiness for more than 25 years.

CT grows, moves

LANCASTER — A Lancaster County farm and home store — Central Tractor Supply — recently moved to a new location on the Manheim Pike, north of Lancaster. They had been located at 1590 Manheim Pike and are now at the 1570 address.

In making the move to a new building, the store doubled its sales floor space and is in a position to meet the growing needs of Pennsylvania agriculture. Manager Bob Lay, who joined the Iowa-based firm three years ago, noted that his store receives orders from as far away as New

England, Delaware, and western Pennsylvania. "We outgrew our old facilities," he explained. Among many other items, the store handles lawn and garden supplies, hand and power tools, clothing, toys, new and used tractor parts, paint, batteries, tires, electrical supplies, wagon boxes, wagon gears, and electrical fencing supplies.

Central Tractor Supply has 28 stores concentrated in the eastern, southern and central portions of the United States. The Lancaster store employs five men full time and one part time.

TRY A CLASSIFIED

AUGUST is for
Alfalfa -

Topdress with 0-12-34

Check for Potato Leafhopper
Methoxychlor Cygon available.

Spray 3rd-4th Cuttings as
necessary.

MH 30

Available for Tobacco.

Limestone -

Available for application
after barley harvest.

Tobacco -

Look at our Solo Sprayers for
use in Sucker Control.

OPEN MON. THRU FRI. 8 to 4:30
CLOSED SATURDAY DURING
JULY & AUGUST



BULK BLENDS
MASTER FARMER
ANHYDROUS AMMONIA

**ORGANIC
PLANT
FOOD CO.**

2313 Norman Rd., Lancaster, PA Ph. 397-5152

PRO-SIL[®] Silage Activator

**CUT FEED COSTS - MAXIMIZE PROFITS
WITH PRO-SIL, THE SILAGE ACTIVATOR**

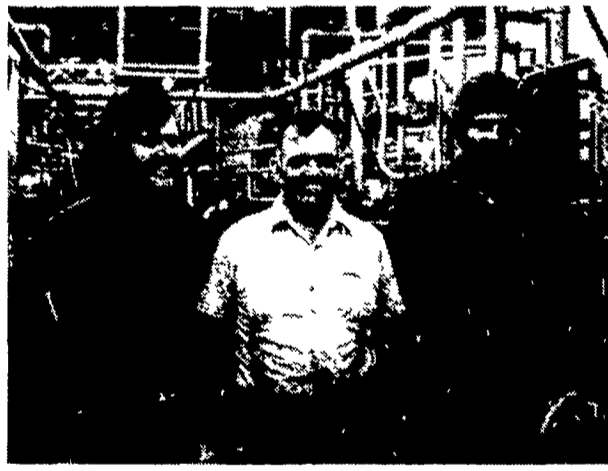
**HERE IS WHAT THE PRO-SIL USERS
HAVE TO SAY ABOUT PRO-SIL**



P. ROBERT WENGER
WENGDALES FARM
RD1, Quarryville, PA

Robert Says:

"I used Pro-Sil on all of my corn silage this past year. We are feeding 60 pounds corn silage, three pounds beet pulp and no hay. Our rolling herd average is 15,962 pounds milk, 615 pounds butterfat. I was well satisfied with Pro-Sil and I plan to use Pro-Sil again this fall"



MATTHEW, HENRY & DAVID YOUNG
RED KNOB FARM
RD2, Peach Bottom, PA

The Young's Say:

"We used Pro-Sil on approximately three-fourths of our corn silage crop in 1975. We fed 120 milking cows Pro-Sil treated silage for nine months and found it reduced our protein cost considerably. We intend to use Pro-Sil again this fall"



JAMES WEICKSEL
RD1, Christiana, PA

James Says:

"My cattle peaked four pounds milk better than before using Pro-Sil. Persistency level ran two percent higher than DHIA average figures. When I ran out of Pro-Silage this summer my milk production immediately dropped 75 pounds per day. I have now ordered my Pro-Sil for the third year."

SEE YOUR LOCAL PRO-SIL DEALER

BROWN & REA

120 Liberty Street
Atglen, PA 19310
Phone 215 593 5149

**LANCASTER BONE
FERTILIZER CO.**

301 Park Avenue
Quarryville, PA 17566
Phone 717 786 7348

**MARTIN LIQUID
SERVICE**

Box 716, Route 1
New Holland, PA 17557
Phone 717 354 5848

**SWATARA CREEK
MILLS INC.**

R D 1, Route 501
Myerstown, PA 17067
Phone 717-933-4111

**NORTHAMPTON
FARM BUREAU
CO-OP**

300 Bushkill St
Tatamy, PA 18085
215-258-2871

**CODORUS
FERTILIZER
SERVICE**

Codorus, PA 17311
[717] 229-2311

**MCCRACKEN'S
FEED MILL, INC.**

2 New Charlotte St.
Manheim, PA
Phone 717-665-2186