

**NEW YORK STATE**

SENECA CAYUGA and WAYNE COUNTIES  
Hudson and Mohawk Valleys

We accept only Choice Farms and Businesses for listing at reasonable prices.

Dairies for 30 to 400 milkers.

Cash Crop 100 to 1,000 tillable acres

Let our farmer-agent associates help you find the size and soil you need.



**J. A. HILLEN, REALTOR**

Old Chatham, NY 12136

PH. 518-794-7681

**SENECA COUNTY**

Heart of Mennonite Country

345 A. 255 T. Honeoye, Odessa soils, 50 cow barn, 2 silos, large home.

430 A. 390 T. 125 cow free stalls, milking parlor, 200 head cattle, complete line machinery. Financing.

130 A. 20 stanchions, good crop land, fair home.

173 A. 130 T. Excellent crop or stock farm. Buildings poor.

130 A. 115 T. Good crop land, no buildings, 15 percent down 7 percent, 10 yrs.

385 Tillable acres - Large modern conventional dairy barns. This is a dandy! No house.

**WJW REALTY**

Seneca Falls, N.Y.

Call Al Forney for appt.

315-568-5910 or 568-5502

**DEER HUNTING & FISHING CAMP** in Huntingdon County. 22 acres wooded, with trout stream and 2 rental units. Also camping facilities. Excellent opportunity for interested party.

**60 ACRE TRACT** of mountain land at the base of mountain adjoining Beagle Club. Large timber has been removed. Priced at \$350 per acre. Dauphin County.

**35 ACRE TRACT** of mountain land at the base of mountain. Very nice with timber and stream. \$650 per acre. Schuylkill County.

**A PRODUCTIVE LYKENS VALLEY FARM** with a fair set of buildings and an excellent home with cheery atmosphere. Priced under \$1,100 per acre.

**ARMSTRONG VALLEY, DAUPHIN COUNTY FARM** with large barn, 2 homes, other necessary buildings, 125 tillable acres, stream and pasture. Farm has many possibilities.

**A BEAUTIFUL CONTEMPORARY HOME** in Mt. Gretna near "The Timbers." Large living room with fireplace, bedroom with fireplace, another bedroom with adjoining redwood deck. A space-saving kitchen with many extras. Large dining room. Special stairway to upper and lower levels. Built on a 200x200 wooded lot.

**SLAUGH AND ASSOCIATES**

Realtors/Insurers

733-6556

Associate Jesse D. Ziegler (717) 838-1257  
Associate Dana K. Brosemer (717) 859-2775

**ATTENTION,  
ALL PERSONS INTERESTED IN  
OWNING YOUR OWN BUSINESS**

Gift Shop and Nursery Business in Lewis County, New York. An established business whose owner is retiring. Beautiful house, 40 acres with Christmas trees and shrubbery, new store, inventory, and all necessary machinery. Price \$105,000.00

Beautiful log cabin home. Two bedrooms with full basement. Can be sold with business above. \$21,000.00

80 acres with 70,000 Christmas trees ready for harvest. Includes gift shop, some inventory, and shrubbery. \$55,000.00

100 acres wood lot with half hard wood. \$14,000.00

70 Acres wood lot with some hard wood. \$11,500.00

All the above parcels can be bought with 25 percent down. Owner will carry rest with 6 percent interest. We also have many reasonable farms for sale.

Call or Write for Appointment

**Floyd Zehr**

Route 1

Castorland, New York 13620

1-315-346-1265

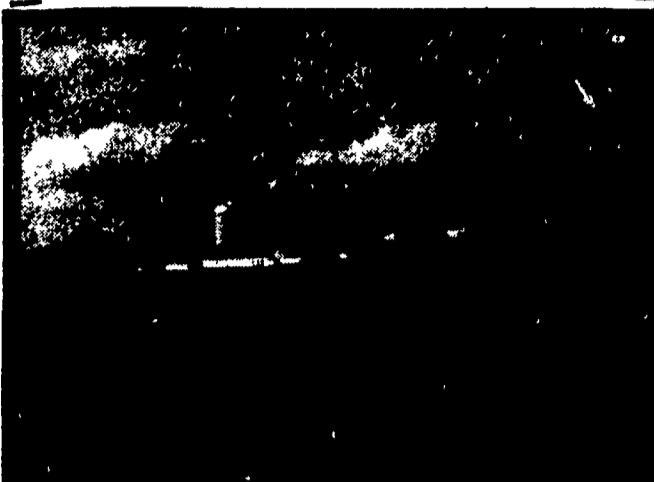
**Real Estate**

**Real Estate**

**YATES and SCHUYLER COUNTIES  
NEW YORK STATE**

FARMS all types and sizes. Homes. Businesses  
Call anytime 607-243-7410 or write:

**STOCKING, Broker Dundee, NY 14837**



**TIOGA CO.**

275 A. 50 stalls. Jamesway ventilating system, pipeline, 24x70 silo w-Big Jim unloader, 36x106 Implement shed, nice 7 room home, lake frontage.

**PERRY CO**

194 A Limestone Large barn 1871 Brick mansion 2 fireplaces Also nice frame house Meadow w/springs A showplace  
98 A 58 Free stalls 2 silos bunk feeder nice home crops cattle & equipment \$265,000

174 A General farm Good barn executive mansion streams

**POTTER CO**

242 A Modern 60 stall dairy Harvestore Nice 9 room house new furnace Also a tenant house 3 stock ponds Showplace  
59 A mostly wooded stream road frontage Bear deer & turkey wall to wall (10-4)

**CLINTON CO**

130 A Large barn dairy & beef 8 room home 2 baths nice location

**LYCOMING CO.**

82 A Good house & barn stream partly wooded Only \$54,000  
107 A Large dairy barn, modern home, stream  
140 A 50 stalls modern dairy 2 nice homes excellent buildings

**LANCASTER CO**

13 A Nice home new kitchen & bath New 2 car garage & workshop Horse barn Variety of fruit & nut trees Quiet & secluded Partly wooded

**BLUE BALL REALTY**

BLUE BALL, PA 17506  
717-354-4536

**C. P. MCGARVEY**

Real Estate

Loysville, PA 17047

Ph. 717-789-3974

+Summer home or hunting lodge. 2 bedroom plus full loft, 20 x 40 Frame house with insulation & aluminum siding, modern kitchen, bath, well & spring, gas stove, refrigerator, some furniture. Approx. 1 acre. On New Germantown Mountain. Secluded. \$18,500.

+14.2 acres with 2 story, 3 bedroom frame house, aluminum siding, storm windows, shower, oil forced hot air heat. In addition, 3 room house with full basement, shower, approx. 6 acres tillable, 4 ft. x 23 ft. new above ground swimming pool, stream, pond, pine trees, 1/2 mile off rt. 850 near Kistler, secluded. \$36,500.

+70 acre farm with two story remodeled house. Mt. Pleasant Mills, Juniata County, no barn, small out-building, some woodland, nice level sandy loam ground, lots of road frontage. \$72,800 (reduced)

+Near New Bloomfield, approx. 32 acres woodland with road frontage and stream. \$29,900.

+Near McCoullough Mills, Rte. 850, Juniata County. Beautiful mobile home with additional two 12' x 12' bedrooms added stove and refrigerator on 2.3 acres, some woodland and stream, lots of state game land. \$13,500.

+On Buck Ridge near Fowler's Hollow State Park, 3 1.1 acre lots, road-frontage, perc tested and surveyed (woodland), plenty of state game land across road. \$2950.00

+Frozen custard business completely equipped on approx. 1 acre of land 1 mile from Newport on Little Buffalo State Park Road 30' x 24' steel and block permanent building. Air conditioning, 3 flavor ice cream machine, chest freezer, refrigerator, large upright cooler, grill, french fryer, stainless steel sinks. Septic system, everything you need to go into your own business. Sacrifice Price \$22,500.

+48.5 acres level woodland foot of Tuscarora Mt. near Ickesburg just off Rte. 17. Fifty foot right away. Reduced to sell \$35,000.

+Farm - 82 acres approx. 44 tillable, stream, spring, nice 7 room remodeled house. Ideal for horses or steers. Near Seven Springs, Juniata County - road frontage both sides. Asking \$120,000.

+Farm - 100 A. Perry County - nice 10 rm. house modernized. Nice large barn - 9 stanchion - 40 acres available to rent. \$150,000. Will consider offers.

**NITTANY VALLEY**

**BRUSH VALLEY**

For Nittany & Brush Valley

Farms Call Us.

80 Acre General with Mobile Home Park. Montour Co.  
120 Acre Beef Farm, stone farm house and rancher in Berks Co.

152 Acre General \$139,000. Clinton Co.

175 Acres, 2 farms, Clinton Co.

73 Acres, Mountain stream, trout pond \$78,000. Clinton Co.

128 Acre General \$65,000. Lycoming Co.

97 Acres, Chicken house, \$100,000. Lycoming Co.

124 Acres, ranch house, \$124,000. Lycoming Co.

56 Acre General \$55,000. Northumberland Co.

95 Acres Beef Farm & exceptional nice house \$155,000. Columbia Co.

80 Acres, no buildings, \$80,000. Columbia Co.

CALL

**WITWER REAL ESTATE**

Ephrata, Pa.

717-733-4138

**CENTRAL PA. FARMS**

Centre County - 100 Gently sloping acres with large Victorian house, barn, and adjoining PSU lands on Rt. 550. Over 1/2 mi. frontage. Reasonably Priced at \$125,000 w-terms. **SOLD**

Centre County - Penns Valley - Ten & one-third acres w-2 yr. old modular, 3 bdrm. home w-full basement; attached deck; spring water & small barn. Located on Rt. 192, 6 mi. east of Centre Hall. Perfect place for horses, cows & kids. Priced at \$42,500.

Juniata County - Good 247 acre Dairy farm with approximately 200 Acres of tillable productive soil, complete with dairy facilities. Two houses in sound condition & excellent spring water (2 springs). Location 3 miles east of Mifflintown. Priced at \$260,000 with 7 percent terms.

Clinton County - 151 acre farm suitable for dairy, or livestock operation. 110 acres tillable, good 6 bedroom house, large bank barn, good condition, spring water. \$125,000 with terms.

Lycoming County - 460 A Dairy Farm. Approximately 185 acres tillable. Level bottom ground, 30 A Pasture, 245 A woodland w-gd. timber. Excellent 2 story house with aluminum siding, barn w-free stall barn attachment (90 free stalls), 20x60 Harvestore Silo w-provision for bunk feeder. 2 streams & owner financing available. Priced at \$250,000. Available this fall or next spring. Owner financing at 7 percent.

**CENTRAL PA. LAND**

Ideal for Weekend Relaxation

Many properties have terms available

**Centre County**

189 Acres - wooded, adjoining State ground - privacy - could be split - \$72,765.

10.29 Acres - wooded, new barn, nice location - \$44,000

33 Acres - clear ground near Colyer Dam - \$33,000

68 Acres - wooded, good hunting area - \$30,600

218.9 Acres - wooded ground, stream, good hunting - Priced at \$350 an acre.

100 Acres - wooded - two springs, excellent cabin - excellent hunting area - \$60,000

39 Acres - wooded - frontage on Penn's Creek - \$17,000

22 Acres - tillable ground - lays nicely - \$22,000

100 Acres - pond, orchard and woodland - excellent hunting and fishing - \$75,000

35 Acres - two acres clear - balance wooded - some nursery stock - \$21,000

150+ Acres - light timber - good bird hunting - electricity available - \$250-A

**Clearfield County**

19.86 Acres - woodland - suitable for cabin near Clearfield - \$20,000

**Blair County**

110 Acres - wooded with stream near Tipton - \$77,000

**ARE YOU PLANNING TO SELL  
YOUR FARM?**

Kissinger Leonard & Heim can offer you

\*A full time farm sales staff specializing in farm sales

\*Extensive advertising & promotion of your farm

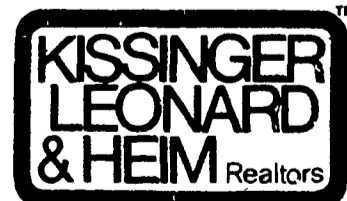
\*Over 35 years of actual farming experience (2 salesmen are presently involved in farming operations)

\*5 years of Agricultural Lending experience with both FmHA & Farm Credit

\*Advice on the best way to sell your farm to maximize your net returns

We Invite Your Inquiry -

At No Obligation to You Of Course



**FARM & LAND DEPARTMENT**

Evenings Call:

Don Myers

PH (814) 422-8111

Fred Strouse

PH (814) 364-1705

F J Kissinger

PH (814) 466-7372

245 South Allen St.

State College

PH: (814) 234-4000

"Serving Central Pa. Since 1933"