

classified ads

PHONE 717-626-2191

The United States has become the world's bread basket for many reasons: -The eastern half of the Nation was settled by people who carved their homes out of the wilderness and owned the land. The Homestead Act of 1862 and two previous laws made tens of millions of acres of western land available to families willing to farm the land. Thus, the farm in this country became an economic unit owned by the farmer, with the farm family doing the managing. The family was driven by a strong incentive to go all-out to make it productive. In Europe, a man was either born to the land or never owned it. In Arnerica, a man could own his land if he were willing to work it.

If we produced today's food supply with the efficiency and techniques available at the time of World War 1, we'd need 7 times as many farmworkers - 31 million instead of today's 4.4 million. One person out of three in today's urban labor force would need to leave his job and go back to the farm. The present products and services produced by that one out of three would be lost.

Farm Equipment

For Sale - J.D. 4020 D, WFE, roll guard cab, weights, warranty on new motor, completely reconditioned, 717-548-3402.

For Sale - Farmall 1026 hydro, 1800 hours, in excellent condition. Ph: 717-859-2960.

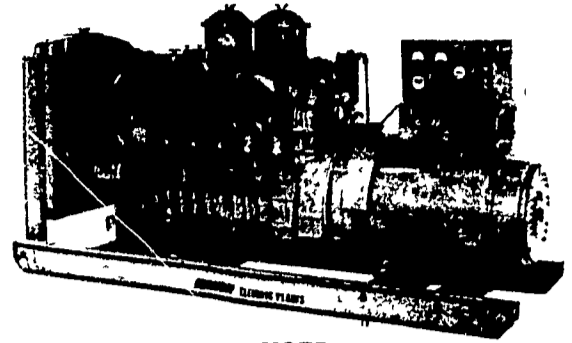
Farm Equipment

Lime & Fertilizer Spreaders. New Willmar and boom type spreaders and a few used ones in stock. C. U. Stoltzfus Mfg. Inc. Box 296F, Morgantown, PA 19543 215-286-5146

For Sale - 4500 gal. tank trailer, 3 compartments, inspected, \$1050.
1971 IHC 2 ton pickup truck, 6 cyl., cattle racks, 40,000 miles, \$1600. 717-273-6018

Electric Generating Systems

Built to Your Specifications
Manual or Automatic
L. P. Gas - Diesel - Gasoline



— USED —

Ford V4 gas power unit, Max HP 50, 91 cu. in. unused cond. \$500.00

371 GM Dsl. power unit, comp. w-clutch, 90 H.P. \$2,500.

100 H.P. GE motor, 3 ph. 1770 RPM, ball bearing, drip proof \$500.

15 KW 18.75 KVA Continental PTO Gen., ph. 1, 540 RPM drive, trailer \$900.

20 KW 25 KVA Westinghouse PTO Gen., 1 ph., 540 RPM drive, skid \$1450.

25 KW 31.2 KVA Gen. Set, P&H 2 cyl. dsl., 1200 RPM, 1 ph., skid \$2500.

28 KW 35 KVA Gen. set, 4-71 GM Dsl., 1200 RPM, 3 ph., skid, recently rebuilt, \$4000.

30 KW 37.5 KVA Gen Set, IH 4 cyl. Dsl., 1200 RPM, 3 ph., skid \$1500

50 KW 62.5 KVA Gen Set, IH 6 cyl. Dsl, 1200 RPM, 3 ph., skid \$2500.

50 KW 62.5 KVA Gen Set, Caterpillar 4 cyl Dsl., 900 RPM, 3 ph., 4 wheel trailer, \$3500.

All 3 phase units can be used as single phase units.

Sales - Service

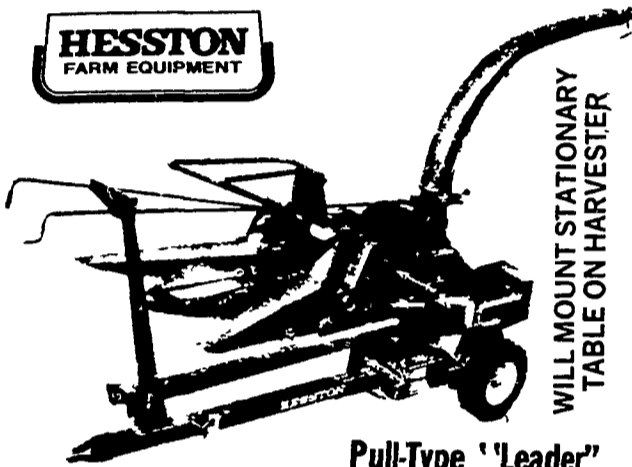
Martin Electric Plants

Isaac W. Martin, Owner

Pleasant Valley Rd., RD2
Ephrata, PA (717) 733-7968

NO INTEREST ON HESSTON PT-7 or PT 10 WINDROWERS AND FORAGE HARVESTERS

TILL MAY 1, 1977



WILL MOUNT STATIONARY TABLE ON HARVESTER

Pull-Type "Leader"

The 2000 features a 150 H.P. or 100 H.P. gear box with 540 or 1000 R.P.M. P.T.O. Both have high capacity cutter. Can be used with a variety of Hesston Headers — 2 and 3 row corn headers, and 6 ft. pickup header. Come in today and see this pull-type work horse.

MILLER'S REPAIRS

8 Miles East of Lancaster
RD1 Bird-in-Hand, PA Ph: 717-656-7013

TRY A CLASSIFIED

HAVE YOUR GRAIN CLEANED AND TREATED ON THE FARM

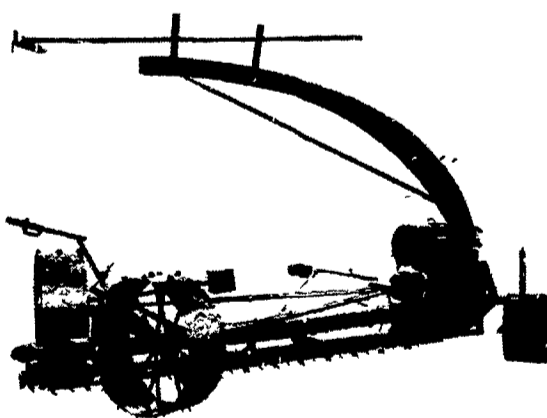
NOW SERVING THE LEHIGH & NORTHAMPTON COUNTY AREAS.

REIST SEED COMPANY

P.O. Box 155 Mount Joy, PA 17552
Phone 717-653-4121
Finest Quality Seeds (Since 1925)

PATZ

98B Silo Unloader



- 30" drive wheels
 - Adjustable impeller blades
 - Gathering chain with cutters & rakers
 - Positive frost cutter
- Silo unloading - Feed handling - Manure handling

**Patz has the Equipment
Patz has the Personnel
Patz means confidence —
depend on it.**

Contact your nearest Patz dealer listed below

Only Bravo controls all eight tomato fungus diseases.

Deliciously healthy tomatoes That's what you get for using Bravo 6F fungicide
Flowable Bravo is the one fungicide that controls early blight, late blight, gray leaf mold, gray spot, anthracnose, Rhizoctonia fruit rot, Botrytis gray mold, and black mold (California, only)
You'll like its convenient flowable form. Ask us for Bravo, we're your local Diamond Shamrock dealer.

DISTRIBUTED BY
AGWAY INC. CENTRAL CHEMICAL CORP.
HELENA CHEMICAL CO. USS AGRI-CHEMICALS
MILLER CHEMICAL CO.
OR SEE YOUR LOCAL AG CHEMICAL SUPPLIER

George Heath, District Manager Mechanicsburg 697-5466

ALEXANDRIA

MAX ISENBERG
669-4027

BALLY

LONGACRE ELECTRIC
845-2261

CAMP HILL

LLOYD SULTZBAUGH
737-4554

EAST EARL

ZIMMERMAN EQUIPMENT
445-6409

ELLIOTTSBURG

CARL BAER
582-2648

HAMBURG

H. DANIEL WENGER
488-6574

HONEY BROOK

ZOOK'S FARM STORE
273-9730

KIRKWOOD

LANDIS & ESBENSHADE
786-4158

LEBANON

MARVIN HORST
272-0871

McALISTERVILLE

CLAIR SANER & SON
463-2234

MILLERSBURG

LANDIS LABOR SAVERS
692-4647

MILTON

LANDIS FARMSTEAD AUTOMATION
437-2375

NEWVILLE

FRED B. MCGILLYRAY
776-7312

PIPERSVILLE

MOYER FARM SERVICE
766-8675

STREET, MD

WALTER WEBSTER
452-8521

THOMASVILLE

KENNETH L. SPAHR
225-1064