

COMPARE OUR PRICES BEFORE YOU BUY — WE SPECIALIZE IN

GRAIN HANDLING EQUIPMENT

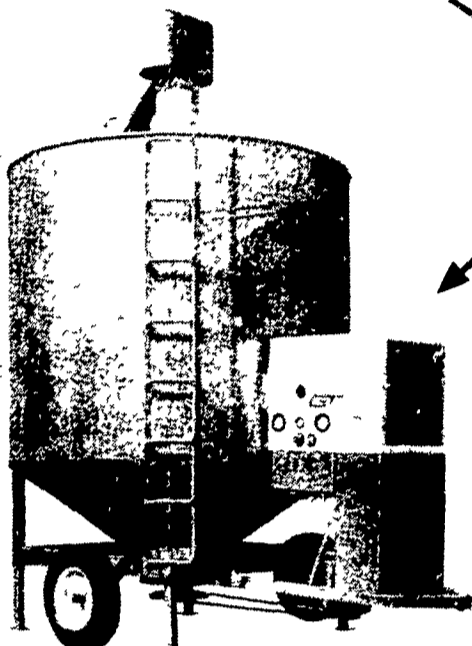
SEE THESE ON DISPLAY

- Read Grain Bins
- Grain Legs
- Continuous Flow Dryers
- Circle Grain Bins
- Grain Augers
- Grain Cleaners
- GT Batch Recirculating Dryers

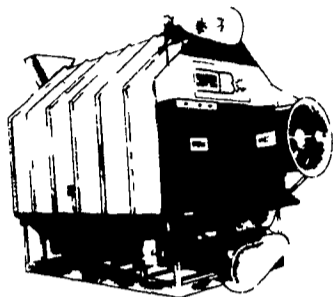
FOLLOW THE ARROWS TO THE ONE THAT FITS YOUR SIZE OPERATION



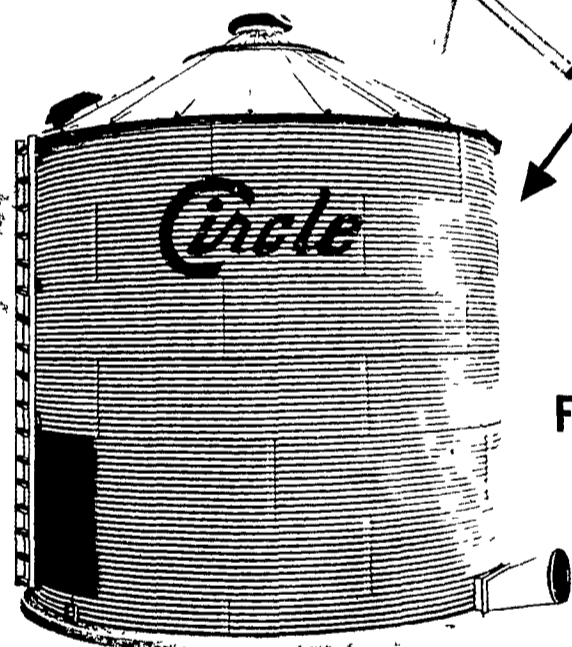
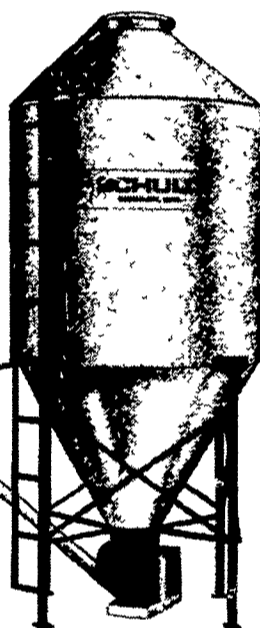
AUTOMATED BATCH DRYER



GT Recirculating Batch



Feed Bin Capacity
From 1000 lbs. to 250,000



From 1000 Bushels -
100,000 Bushels
to meet your
storage needs

NOTICE TO YOU THE READER:

WE ARE AUTHORIZED DISTRIBUTOR OF LIQUID MANURE EQUIPMENT TO SELL ANYWHERE INCLUDING NEIGHBORING PA STATES.

"BETTERBILT"

Vacuum Spreaders

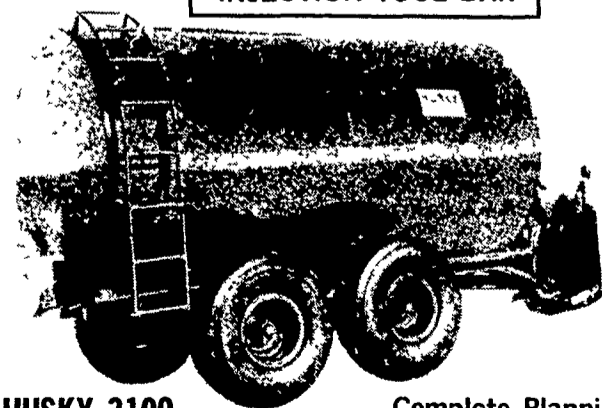
Model 800 gal.; 2100 gal.;
1100 gal.; 3100 gal.
1500 gal.;

Plow Down Attachments Available

Husky LIQUID MANURE EQUIPMENT

Trailer Mounted Pumps
8-10-12 Ft.
3 point Hitch Mounted Pumps
Tank Spreaders
1250 gal. Tandem
1875 gal. Tandem
2500 gal. Tandem
3100 gal. Tandem
Plow Down Attachments Available

FEATURING:
3 POINT HITCH
INJECTION TOOL BAR



HUSKY 3100

Complete Planning — Installation — Service

SHENK'S FARM SERVICE

501 E. WOODS DRIVE, LITITZ, PA 17543 PHONE (717) 626-1151
ANSWERING SERVICE (717) 733-1224

Pesticide outlook favorable

The pesticide outlook can be summed up in one word: favorable.

Not only are supplies ample for this year's expanded acreage, but prices have leveled off, too, according to USDA economists.

Production of all pesticides for use in 1976 should range 10-15 percent over 1975. Also helping are increased carryover supplies, estimated at 13 percent of the previous year's output, versus only 8 percent in early 1975.

Last January and February, a survey of 25 firms that produce about two-thirds of all U.S. farm pesticides revealed that production problems caused by the energy crisis and raw material shortages in 1974 and early 1975 had all but disappeared.

Fewer than 10 percent of the firms reported problems - compared with 72 percent in 1974. Most blamed inadequate capacities rather than lack of raw materials.

The price picture shows little change from last

season. Manufacturers have upped their charges to dealers only modestly compared with the past 2 years. And retail list prices have inched up less than 5 percent, versus roughly 25 percent last year.

Distributors, meantime, reported that growers are paying somewhat lower prices than last year, especially for herbicides. For most producers, that's welcome relief from 1973-1975, when price tags on 10 major pesticide products shot up more than 50 percent.

On the demand side,

farmers will probably use 5-10 percent more pesticides than last year. As of April 1, cotton growers planned to up their acreage by 16 percent, a move that should increase demand for cotton herbicides and insecticides by a similar amount. More modest increases expected for corn, sorghum, and wheat will also stimulate pesticide sales.

Prospects look good for next year as well. Manufacturers revealed plans to expand production capacity by 10-15 percent this year and 5-10 percent in 1977.

Employees honored

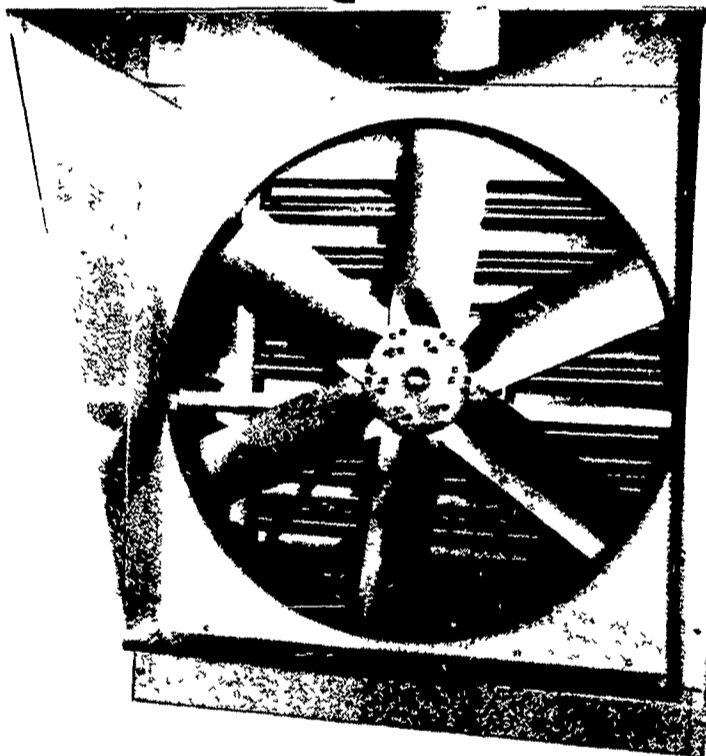
NEW HOLLAND - Sperry New Holland will honor three employees who have completed 25 years of service with the company this month.

Those being honored are: Paul Futer, Jr., 430 Brimmer Avenue, New Holland, senior offset

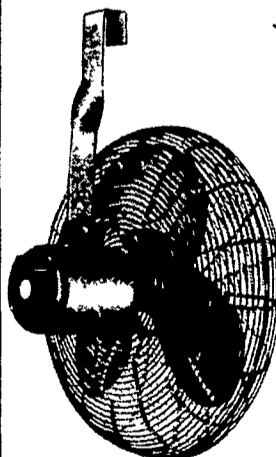
operator; Ben S. Taylor, 2811 Lower Roswell Road, Marietta, Ga., sales representative; and Charles Kline, R1 Reinholds, project engineer.

Each will be awarded an inscribed watch or clock by the company to commemorate the anniversary.

VENTILATION HEADQUARTERS

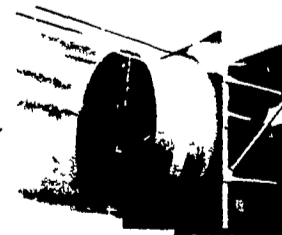


- ★ JAMESWAY
- ★ CHORE TIME
- ★ AIR-O-MATIC
- ★ ACME
- ★ VENT-O-MATIC



- ★ CIRCULATING
FANS

- ★ FAN JET
SYSTEMS



Agri Equip., Inc. offers complete

- SALES
- INSTALLATION
- SERVICE



RD2 Ephrata, PA 17522
(Farmersville)

Phone
Bus. 717-354-4271

PROMPT PARTS DELIVERY VIA U.P.S.