

Farmers advised

(Continued from Page 1)

breeder and exhibitor banners at the Lancaster County Black and White Show. The top five finishers received prizes from Pennfield Corporation.

Attended by a sizable crowd in spite of excellent hay-making weather, the field day centered around just plain country pleasantries and the hospitality offered by the Maurice Welk family. The Welks' herd of Holsteins, known for performance in both the milk bucket and show ring, were scrutinized, along with the facilities. Welk houses and milks his cows in a 4-row stanchion barn.

Aside from the informal parts of the program, there were also talks by Associate County Agent N. Alan Bair, Dairy Council representative, Ray Weber; and Lancaster County's 1976 dairy princess, Deb Kreider. Bair tossed aside his planned topics of discussion and chose instead to eulogize Rep. Jerry Litton, Democrat from Missouri, whom, Bair said, had done an awful lot on behalf of agriculture. The farmer-politician and his family were killed in an airplane crash earlier this week.

Weber, a frequent visitor to dairy field days, centered his talk on the importance of nutrition. "Educate yourself so you can be a spokesman

for the dairy industry," he urged. He noted that farmers know a lot about the feeding and breeding of their animals, but aren't that well versed when it comes to nutritional knowledge about the product they sell. In fact, nutrition is something which very few people knew much about until just recent years.

In addition to his own remarks on nutrition, Weber also showed a film on the subject which was produced by the Food and Drug Administration. Titled "Read the Label - Set a Better Table," the film drove home the point which farmers knew long ago: The diets of their cows are much more carefully planned than many meals in households across the country. Government and private programs are trying to change that, however, and Weber stresses that it's important for dairymen to have first-hand knowledge of their product.

Another point made by Weber is that there is "a Calcium shortage in the United States — people do not drink enough milk." Of evident concern to him is the fact that U.S. high schoolers are allowed to graduate without at least one course in nutrition. "If you eat poorly now, it may not show, but it will later," he warned.

The County's dairy princess, spoke briefly on her intentions and plans

during her reign. She said she is aiming to carry her message to all people — young and old alike, and is currently preparing for the

State dairy princess pageant.

Aside from numerous door prizes, there was one more prize awarded which

possibly exceeded the combined value of all others.

Twelve-year old Ivan Yost, Jr. was the lucky young man who received a calf donated

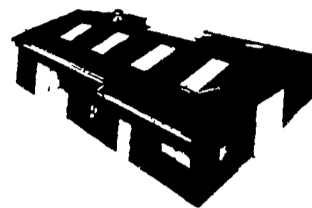
by Lancaster area dairyman, Jim High. A requirement is that young Yost will show the animal in upcoming 4-H or FFA shows.



VERNON E. MYER

STEEL BUILDINGS AND GRAIN STORAGE

RD4, LEBANON, PA 17042
PHONE: (717) 867-4139



For Further Information On Our
STEEL BUILDINGS And GRAIN STORAGE
... Feel Free To Mail Attached Coupon
Or Call Today! No Obligation.

COMMERCIAL and AGRICULTURAL BUILDINGS
WE OFFER COMPLETE ERECTION ON ANY SIZE OR STYLE BUILDING

Mail Coupon Today!

- SEND STEEL BUILDINGS LITERATURE
- SEND GRAIN STORAGE LITERATURE

NAME:
ADDRESS:
CITY: STATE: ZIP:
TELEPHONE:

See You at the
South Lebanon Fair
August 9-13



Twelve-year-old Ivan Yost won this calf donated by Jim High, right.



ATTENTION
FARMERS!!

WHY

IM-PRUV-ALL

SILAGE
COMPOUND?

TAKE ONE MINUTE TO READ THIS

IM-PRUV-ALL PRODUCTS are feed balances for the lactic acid making bacteria.

When added to the silage, it starts the ferment immediately, and in three days the total ferment is usually over. This means it made the total 1½% lactic acid in three days instead of the normal three weeks. The shorter and lower heat levels save your energy, vitamin A and digestible protein.

RECENT RESULTS FROM THE UNIVERSITY OF KENTUCKY SILAGE TEST showed that the IM-PRUV-ALL treated silage had 90 times more bacteria on the second day than the untreated.

Other studies have shown that the IM-PRUV-ALL silages many times have averaged 6-8% higher in T.D.N. It's just like feeding 6-8 pds. more grain, or you can feed 6-8 pds. less grain to achieve similar production.

WHY USE PRESERVATIVES WHEN YOU
CAN GIVE NATURE A HELPING HAND WITH **IM-PRUV-ALL** ?

FOR MORE INFORMATION CONTACT:

Melvin R. Weaver

RD1, Box 529
Manheim, PA 17545
717-569-6576

QUALITY
CONKLIN
PRODUCTS

ALFALFA
SPRAYS

GLICK'S

Distributor for

**ROOFING & SPOUTING
BAKED ENAMEL TIN ROOFS**

Colors: Turquoise, Red, White (only)

FULL SERVICE DEALER
SALES & INSTALLATION

SAMUEL B. GLICK

R.D.1, Kinzer, PA Ph. (717) 442-4921
Please call before 7 A.M.
or after 6 P.M.
No Sunday Calls