

Poultry Market Reports

Weekly New York Egg Market

	Mon.	Tues.	Wed.	Thurs.	Fri.
WHITE					
Ex. Large	72	73	73	73	73
Large	69	71	71	71	71
Mediums	61	61	61	61	61
Pullets	44	44	44	44	44
Peewees	31	31	31	31	31
BROWN					
Large	69	70	70	70	70
Mediums	Unquoted				
Pullets	Unquoted				
Peewees	Unquoted				
Off Grade					
Large	62	64	64	64	64
Checks	41	42	42	43	43

Tone — Large sizes well cleared, balance adequate.
Copyright 1976 Urner Barry Publications

New England Weekly Shell Egg Report

Tuesday, July 27, 1976
Prices paid per dozen Grade "A" brown eggs in cartons, delivered to retail stores:

	EX LARGE	LARGE	MEDIUM	SMALL
MASS. +	77-82	71-76	64-71	44-52
Mostly	78-79	72-73	65-66	45-46
NEW HAMP.	72-79	66-73	59-66	39-46
Mostly	75-76	69-70	62-63	42-43
R. I.	81-82	75-76	68-69	48-49
VERMONT	79-85	73-81	66-73	-
Mostly	79-80	73-78	66-70	-
MAINE	79-81	73-75	66-68	46-48

+ Includes Central and Western Sections Only.

NEST RUN EGGS

Prices are from Egg Clearinghouse, Inc., (ECI) Durham, N.H. and reflect trading prices for gradeable nest run eggs (GNR) on ECI, a nationwide trading center for producers, packers and marketers. GNR eggs are classified by weight in 30-dozen cases, and traded in lots of either 300 or 750 cases. Prices are FOB buyers dock, and are computed Tuesday and Thursday of each week. This week's prices for each classification were:

Classification	New Weight Per Case	Tuesday	Thursday
Extra Large	51 lbs.		
Class 1 - Large	48 lbs.	62	62
Class 2 - Large	45 lbs.	58	58
Class 3 - Medium	42 lbs.	51	51
Class 4 - Small	39 lbs.	37	37
Breaking Stock	48 lbs.	50	51
Checks	48 lbs.	43	44

Philadelphia Eggs

Prices unchanged to higher on large sizes. Unchanged on mediums. Carton demand fairly good. Offerings of large sizes short, adequate on mediums and smalls. Undertone fully steady.

Prices to retailers: Sales to volume buyers, consumer grades white eggs in cartons, delivered: Store Door A Extra Large 71-75½; A Large 69½-74½; A Medium 62½-64.

Lancaster Farming

P.O. Box 266 - Lititz, PA 17543
Office: 22 E. Main St., Lititz, PA 17543
Record-Express Office Building
Phone: Lancaster 717-394-3047
or Lititz 717-626-1164
Dieter Krieg, Editor
Joanne Spahr, Associate Editor
Judy Mitchell, Berks Correspondent

Subscription Price \$4 per year
Established November 4, 1955
Published every Saturday by Lancaster Farming
Lititz, PA
Second Class Postage paid at Lititz, PA 17543

For Address Change form or new subscription see Classified Section.

Members of Newspaper Farm Editors Assn., Pa Newspaper Publishers Association, and National Newspaper Association

Delmarva Poultry

Wednesday, July 28, 1976
RTC movement only fair at best. Slaughter schedules about steady. Today's LTL asking prices held unchanged on both Plant & US Grade A. Advance T-L interest starting to develop at 42 cents for next week on Plant Grade. Live supplies fully adequate but continue lighter than desired. Undertone firm.

Negotiated trucklot prices 2-3 lb. ready to cook broiler-fryers for delivery next week: Plant Grade 42.

Current broiler - fryer negotiated prices for immediate shipment includes mostly multiple-drop shipments to New York City from Delmarva.

Range: US Grade A 42-43; Plant Grade 41-42; Premium X US Grade A 44-48; Premium X Plant Grade 43-46.

Wtd. Avg.: US Grade A 42.48; Plant Grade 41.37; Premium X US Grade A 46.26; Premium X Plant Grade 45.82.

Eastern Pa. & N.J. Poultry

Wednesday, July 28
Prices unch to higher on light type hens. Offerings fully adequate for a fairly good demand with plants running near capacity. Offerings of heavy type adequate at fair call.

Prices paid at farm: Light type hens 12-15, mostly 14½ in Pa., mostly 14-14½ in NJ.

Heavy type hens TFEWR.

Fogelsville Poultry

Prices paid dock weights, cent per pound, except where noted.

Sale of July 27, 1976.
Hens, heavy type 25½-32; Pullets 30-43, mostly 41-42; Roasters 27-31; Ducks 25-95; Drakes 46; Turkeys-Toms 44; Turkeys-Hens 44; Rabbits 25-48, mostly 40-45; Guinea 1.50-1.80; Pigeons (per pr.) 65-3.05.

Total Coops Sold 143.
Auction Day - Tuesday each week at 11:30 a.m.
Poultry Received - Mon. 7 p.m. to 10:30 p.m., Tues. 7 a.m. to 12 noon.

Directions - Take Rt. 22 thruway. Exit at Fogelsville Exit, North to stop light in Fogelsville, turn left, proceed one block, turn left, again at Cracker Barrel Restaurant. Auction right side 100 feet from your last left turn.

Baltimore Eggs

Wednesday, July 28, 1976
Prices mostly 2 cents higher on large, unchanged on mediums. Demand fair. Supplies fully adequate.

Cartoned eggs: Prices to retailers, state graded (min one case sale) white Grade A Large 75-78, Grade A Medium 65-68.

Hay Markets

New Holland

New Holland Sales Stables, Inc.
Hay, Straw and Grain Sale
Monday, July 26, 1976
11:00 a.m.

65 Loads of Hay, Straw and Ear Corn sold as follows: Alfalfa 80-88 per ton; Mixed Hay 52-81 per ton; Timothy 52-75 per ton; 1 Fancy load of Clover 92 per ton; Straw 50-60 per ton with few loads up to 65 per ton; Ear Corn, 22 loads 90-96 and Oats \$1.75 per bu.

New Holland Dairy

Reported receipts of 126 cows, and 31 heifers. Market steady with last week's market.

Load of Pennsylvania fresh cows 600-800, springers 575-830; Load of Franklin County fresh cows 600-710; Load of Pennsylvania fresh cows 500-550; two loads of Wisconsin fresh cows 450-900.

Herd dispersal, 31 head, all stages of lactation 310-790.

Locally consigned cows 350-680; Springing heifers 475-710; Open Heifers 140-275.

Green Dragon

July 23, 1976
23 loads hay & 13 loads straw.
Alfalfa, few loads 63.00-79.00; Timothy 41.00-51.00; Mixed hay 45.00-57.00, one 83.00; Straw 49.00-55.00; Corn, 17 loads 49.00-55.00.

Regional Hay

Hay Prices for Southeastern & So. Central Pennsylvania
(All hay No. 2 and better, prices paid by dealers at the farm, price per ton.)
Hay & Straw steady.
Alfalfa 60.00-70.00; Mixed hay 40.00-50.00; Timothy hay 40.00-50.00; Straw 35.00-45.00; Mulch 20.00-25.00.

Harvey Z. Martin

Hay, Straw and Ear Corn Sale
Leola, Pa.
Wednesday, July 28, 1976
55 Loads
Alfalfa 57 to 70, top load 95; Timothy 41 to 65; Mixed Hay 36 to 76; Clover 40 to 70; Straw 50 to 57; Corn 83 to 94.50.

Try A Classified Ad It Pays!

SEE CFH'S "SAVINGS TIME" SPECIAL-TAGS AD
FARM EQUIPMENT SECTION CLASSIFIED PAGE

GREEN DRAGON LIVESTOCK SALES

1 mile North of Ephrata, PA

SALE EVERY FRIDAY

Bulls, Steers, Slaughter Cows, Lambs and veal calves

11:00 A.M. - Beef Sale Stockers & Feeders
12:30 P.M. - Dairy Cows
7:00 P.M. - Small Animal Sale

We will have consignments from Alfred Albright, Bob Kennedy, Ray Keiper and Kelly Bowser

Bring a Load and Buy a Load
For Special Sales and Herd Dispersals on the farm or at our barn or other market information call: Office 717-733-2444. Res. 717-838-4318

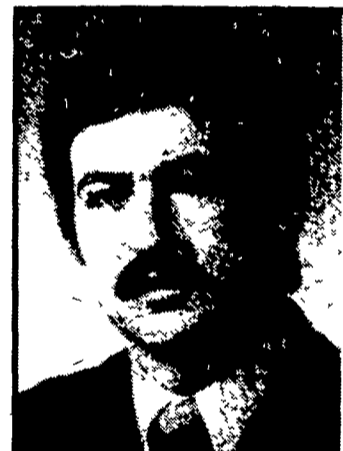
Walter H. Risser, Proprietor

MY BIRDS OUT OF WATER? NEVER!

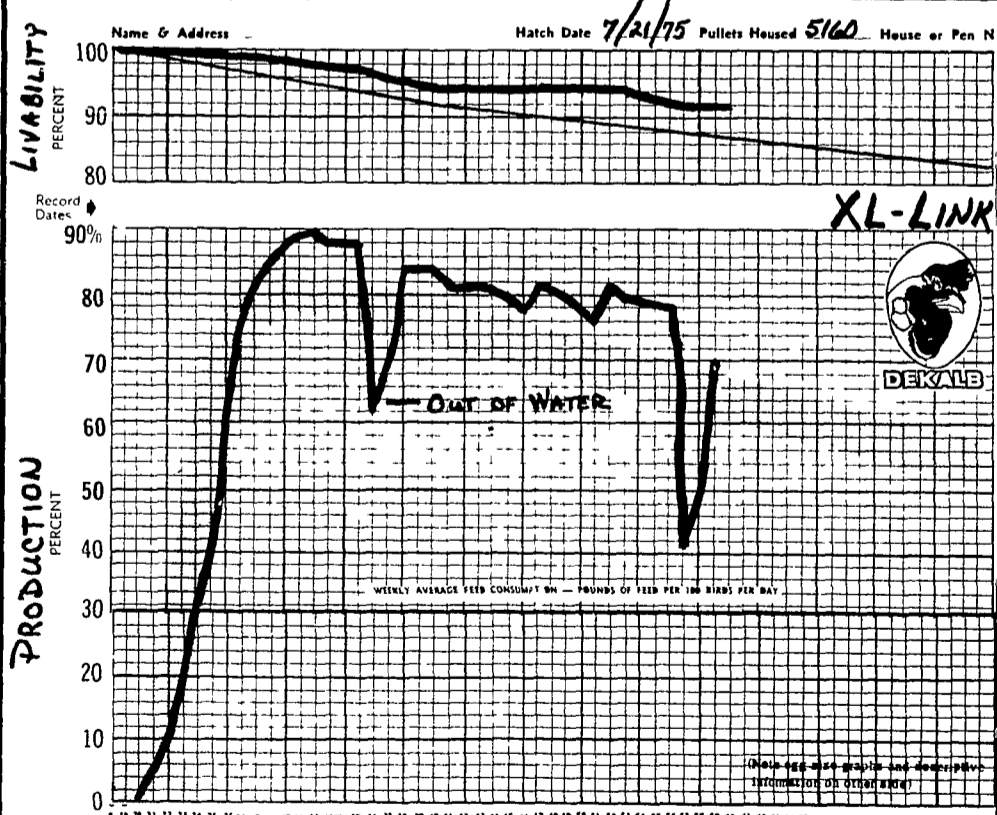
"I hope this never does happen on your farm. But there are many stress conditions which can cause a severe drop in egg production — hot weather, power failure, disease breaks, out of feed or water. When this happens, do your hens demonstrate a FORGIVENESS quality?"

THE DEKALB XL-LINKS DO!

Here's an actual production record to demonstrate



LEON MOYER
Sales Mgr.



Moyer's CHICKS, INC.

DEKALB
BROWN & WHITE
EGG LAYERS

Quakertown, PA 18951
(215) 536-3155

HUBBARD
WHITE MT.
BROILERS