

Livestock market and auction news

Leesport

CATTLE 270. Supply included 62 percent head feeder cattle. Compared with last Wednesday's market, slaughter steers steady to 75 cents higher. Slaughter cows \$1 to \$2 lower. Few High Choice and Prime No. 3-4, 1100-1200 lbs. slaughter steers 38.00-39.00, Choice No. 2-4, 950-1300 lbs.

36.75-38.00, Good 34.00-37.10, Standard 32.75-35.00, few Utility 28.75-31.85. Choice and Prime No. 2-4, 800-1245 lbs. slaughter heifers 34.00-36.50, few Standard and Good 30.00-33.00. Utility and High Dressing Cutter slaughter cows 27.85-28.85, few Commercial 24.85-28.75, Cutters 25.10-27.75, Canners 23.00-25.25, Shells down to 18.00. Choice slaughter bullocks

35.00-37.35, few Good 33.75-35.00, few Standard 31.10-33.85, few Utility 25.00-28.00. Few Yield Grade No. 1, 1245-1710 lbs. slaughter bulls 34.00-39.10, individual Yield Grade No. 2 at 33.00. Choice 320-465 lbs. feeder steers 40.00-42.00, individual Prime at 45.50, Good 350-850 lbs. 32.50-37.50, few Medium 400-700 lbs. 27.00-32.00. Good 315-525 lbs. feeder bulls 31.50-35.00.

CALVES 153. Vealers mostly \$6 to \$7 lower. Few Choice vealers 48.00-54.00, Good 38.00-45.00, Standard 32.00-37.00, Utility 90-110 lbs. 29.00-33.00, 70-85 lbs. 22.00-28.00. Farm Calves: Holstein Bulls 95-110 lbs. 32.00-39.50; Few Beef cross bulls and heifers 75-110 lbs. 30.00-42.00.

HOGS 263. Barrows and gilts \$2 to 2.50 lower. Few US No. 1-2 210-215 lbs. barrows and gilts 48.25-48.85, No. 1-3 195-245 lbs. 47.60-48.35, No. 2-3 190-245 lbs. 47.00-48.10. US No. 1-3 260-475 lbs. sows 34.00-38.75, individual's 41.00 and 44.25, No. 2-3 295-580 lbs. 30.25-35.00, individual at 25.00 and 28.00. Few Boars 29.00-32.00, light weights 32.75-39.00.

FEEDER PIGS 130. US No. 1-3 25-30 lbs. feeder pigs 22.00-28.00 per head, No. 1-3 35-45 lbs. 30.00-36.50, No. 1-3 50-65 lbs. 30.00-35.50 per head, few Utility 30-45 lbs. 20.00-24.00 per head.

SHEEP 21. Individual Choice 60 lbs. spring slaughter lambs 44.00 and 50.00, Utility and Good 45-60 lbs. 36.00-42.00. Slaughter ewes 12.50-15.00.

Omaha Cattle

July 22

Weekly 51 — Cattle — compared with the previous week's close, slaughter steers and heifers closed steady to 25 cents higher, losing most of an early price advance. Cows 2.50-3.00 lower, bulls 3.00-4.00 lower. Four day receipts this week 14,900 compared 14,100 previous week and 14,600 a year ago.

STEERS: At the close, Choice 2-4 1050-1300 lbs. 37.00-38.25 with three loads mainly 3 1075-1200 lbs. 38.50-38.75. Choice, some with end of Prime, 3 with large percentage 4 1200-1375 lbs. 35.25-36.50, some 4-5 33.00-34.00. Fore part of week Choice 2-4 1050-1300 lbs. 37.50-39.00, bulk 38.00-39.00 with few loads Choice 3 1075-1225 lbs. 39.15-39.50. At the close, Mixed Good and Choice 2-3 975-1200 lbs. 36.00-37.00. Good 2-3 33.00-36.00. Standard and Good 2-3 31.00-32.00.

Average of LS 214 detailed quotations, for Choice 900-1100 lb. steers this week 38.22, Choice 1100-1300 lbs. 37.72. Average weight steers this week 1133 lbs. as compared 1124 lbs. previous week. Average weight heifers this week 981 lbs. as compared 953 lbs. previous week.

HEIFERS: At the close, Choice 2-4 875-1075 lbs. 36.00-37.50, largely 36.50-37.25, package 950 lbs. 38.00 at week's best time, Choice 2-4 875-1075 lbs. 37.00-38.25, three

loads Choice 3 900-1000 lbs. 38.50-38.75. Mixed Good and Choice 2-3 800-1000 lbs. closed 34.00-36.00. Good 2-3 32.50-35.00. Few Standard and Good 30.50-32.00.

COWS: Utility and Commercial closed 23.50-24.00, occasionally 24.50. Canner and Cutter 20.00-23.00.

BULLS: Yield grade 1&2 1300-1800 lbs. closed 30.00-33.00, few yield grade 1 33.50-34.00.

FEEDERS: Mostly Choice fleshy steers 900-1050 lbs. ranged 37.00-38.50, closed 37.00-37.50. Feeders, including around 1500 at the auction. Feeder steers and heifers firm to mostly 1.00 higher, instances 2.00 higher, except some partly finished fleshy steers over 800 lbs. weak to 1.00 lower. Supply mainly Good and Choice 400-800 lb. steers and 350-650 lb. heifers.

FEEDER STEERS: Choice 475-600 lbs. 37.00-40.50, 600-800 lbs. 36.75-39.00, few lots fleshy 775-875 lbs. 35.75-37.25. Mixed Good and Choice 35.50-37.00. Good 375-500 lbs. 33.25-35.00. Few lots Standard 500-775 lb. Holsteins 27.00-28.25.

FEEDER HEIFERS: Choice 400-625 lbs. 32.25-35.00. Mixed Good and Choice 450-650 lbs. 30.00-32.75. Good 350-500 lbs. 27.00-30.00.

Carlisle

Carlisle, Pa.
July 20, 1976

CATTLE 248. Compared with last Tuesday's market, slaughter steers grading Choice \$2.25 higher, Standard & Good about steady. Slaughter cows 50 cents to \$1 lower, spots \$2 lower. Few Choice No. 2-4 1095-1225 lbs. slaughter steers 38.00-39.25, Good 33.00-35.85, one Standard at 32.35, few Utility 21.50-27.50. One Choice slaughter heifer at 37.10, Good 31.00-35.00, few Standard 27.10-29.35, few Utility 22.50-26.00. Utility & High Dressing Cutter slaughter cows 28.75-29.75, Commercial 24.00-27.10, Cutters 26.10-28.50, Canners 23.10-25.75, Shells down to 19.85. Couple Standard slaughter bullocks 29.50 and 30.10, couple Utility 23.60 and 26.75. Few Yield Grade No. 2 1220-1725 lbs. slaughter bulls 33.10-34.50. Good 300-715 lbs. feeder steers 30.75-38.00, Good 425-715 lbs. feeder heifers 29.00-33.75. Medium 300-765 lbs. 23.00-28.50, Medium & Good 305-785 lbs. feeder bulls 23.75-32.50.

CALVES 194. Vealers grading Standard & Good steady to 50 cents lower, Utility \$1 to \$1.50 lower. One Choice vealer at 55.50, Good 46.00-50.00, Standard 40.00-45.50, Utility 90-120 lbs. 32.50-39.50, 70-85 lbs. 27.00-34.00, few 50-65 lbs. 11.00-24.50.

HOGS 233. Barrows & Gilts \$1.50 to \$2 lower. US No. 1-3 205-225 lbs. barrows & gilts 48.85-49.10, No. 2-3 190-240 lbs. 47.60-48.50, few No. 2-4 240-290 lbs. 41.10-45.00, No. 1-3 175-180 lbs. 44.75-46.00. US No. 1-3 320-465 lbs. sows 38.00-40.00, No. 2-3 400-605 lbs. 32.75-37.25. Boars 32.00-33.75.

FEEDER PIGS 135. US No. 1-3 10-15 lbs. feeder pigs 12.00-17.50 per head, No. 1-3 25-35 lbs. 23.50-34.00, No. 1-3 40-50 lbs. 38.00-43.00, one lot 60 lbs. 49.50 per head.

SHEEP 12. Few Good 55-60 lbs. spring slaughter lambs 34.00-36.50, 90-100 lbs. 35.00-40.00. Few Slaughter ewes 12.00-13.50.

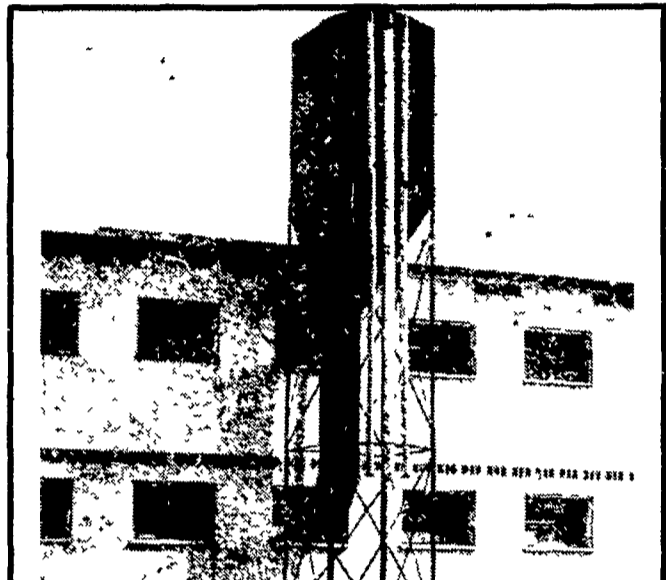
Joliet Cattle

Joliet, Ill.
July 21, 1976
Fed. State

51 and close. **CATTLE:** 4100. Trading moderate on steers, slow on heifers. Slaughter steers under 1250 lbs. steady to 25 lower, over 1250 lbs. steady early late sales steady to 50 lower. Heifers early steady to 25 lower, some late sales 25 to 75 lower. Supply mostly Choice steers and heifers. Clearance fairly complete.

SLAUGHTER STEERS: High Choice and Prime 3-5 1250-1425 lbs. 36.50-37.50, few late 36.00-37.00. Choice 2-4 1050-1250 lbs. 37.50-38.25, 4 loads at 38.50. Mixed Good and Choice 2-3 900-1200 lbs. 35.50-37.50. Few Good 2-3 1100-1300 lbs. Holsteins 32.00-33.00.

SLAUGHTER HEIFERS: Choice, few Prime 2-4 900-1050 lbs. 36.00-37.50, closing mostly 36.00-37.00. Mixed Good and Choice 2-3 750-950 lbs. 34.50-36.00. Good 2-3 700-850 lbs. 32.50-34.50.



CUSTOM MADE FEED BINS

- Made of 14 Gauge Steel
- Longer Taper for Easier Flow
- All welded seams which make it water proof and rodent proof
- Can be installed inside or outside building
- Most installations can be made without auger.

WILL DELIVER AND INSTALL ANYWHERE

FOR FREE ESTIMATE CALL
STOLTZFUS WELDING

717-345-4854

Also see us for all your grain handling needs.

NEW HOLLAND SALES STABLES INC.

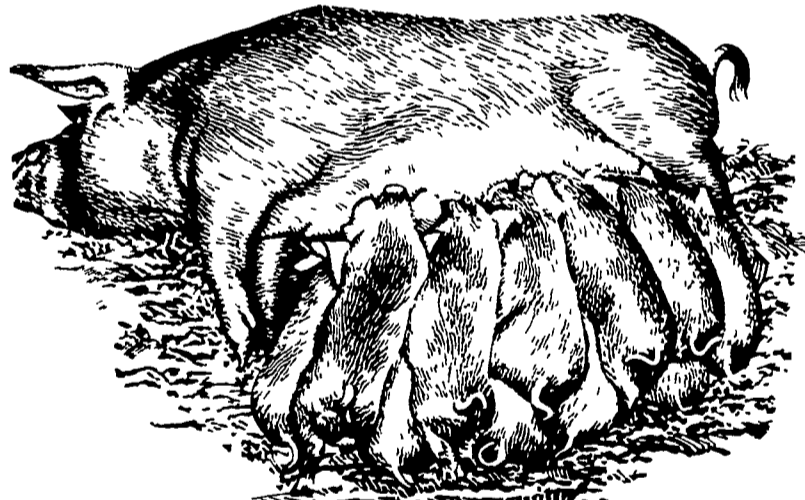
12 miles east of Lancaster on Route 23, New Holland, PA.

1ST FEEDER PIG

SALE IN AIR

CONDITIONED

SALES PAVILION



WEDNESDAY, JULY 28, 1976

SALE TO START PROMPTLY AT 1:00 P.M.

WE WILL RECEIVE YOUR PIGS ANYTIME FROM 7 A.M. WED. MORNING

State Graded. All pigs inspected by State Approved Veterinarian.

Commission Charge \$1.25 per head. 25¢ additional charge for tagging.

State tags available at our office for you to tag pigs at home to save 25¢ tagging charge.

Tags delivered if you call 717-354-4341 our office in advance.

CALF SALE TO BE HELD IN NEW SALES PAVILION
JULY 29, 6:30 P.M.

NORMAN KOLB
717-397-5538

ABE DIFFENBACH
717-393-4464

