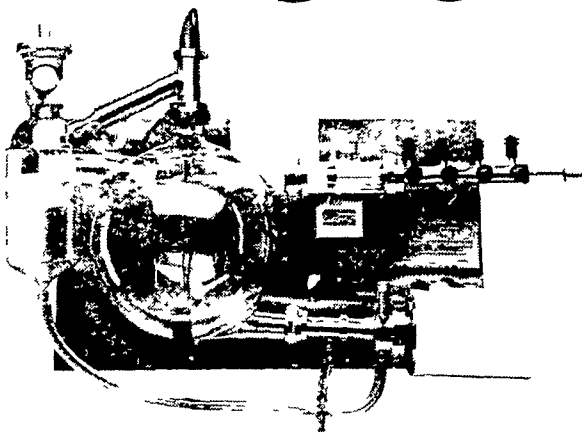


AGWAY

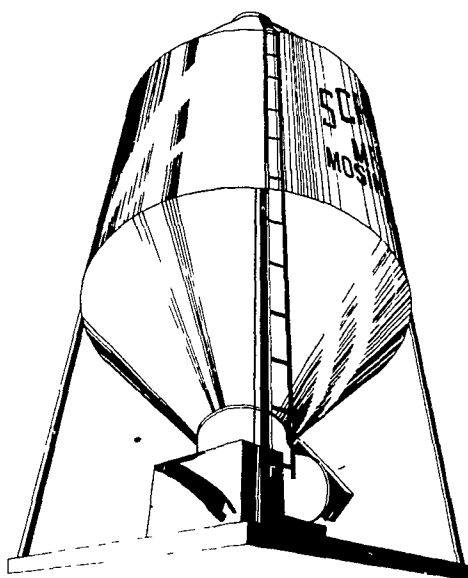


PIPELINE SYSTEM



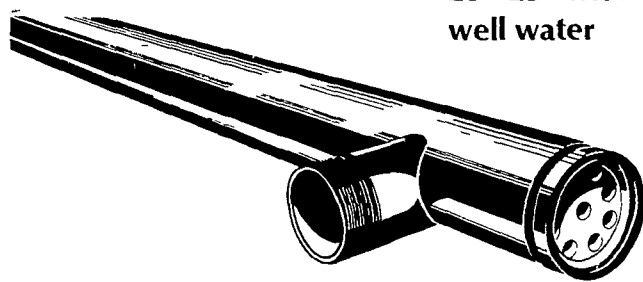
fast...
efficient...
milk handling!

There's a STA-RITE pipeline system to fit any stanchion barn or milking parlor... and to fit any budget, too. The heart of this system is the STA-RITE Full-Control milkhouse panel. It's compact, efficient, low-cost, and convenient. Handles up to 8 milkers, yet can be switched from milk to wash in seconds for fast, thorough cleaning. Factory assembled and tested for easiest installation, most dependable operation... Ready to use... simply connect pipeline and plug in!



The right feed bin for you **Schuld bulk feed bin**

- Capacities from 3 to 125 tons
- Unique free-flow design
- Free erection (all but largest)
- Heavy galvanized steel



Cool milk from 20°-25° with well water

PRE-COOLING SYSTEM by Top Line

The pre-cooler from Top Line uses well water to cool milk from 20-25° in line before it hits the tank. This in-line pre-cooler can cut compressor time in half, reduce power costs by taking the strain off your condensing unit and relieves the refrigeration load on your bulk tank. Easy to clean in place and easy to install. Sized to fit your system.

Predicting animal hunger objective of scientists

LOGAN - The words "I'm full" have never been uttered by cows, but scientists at The Pennsylvania State University are seeking equations to feed just the right proportion of forage and grain to livestock.

The studies could become a "breakthrough" in determining how much an animal will eat of a given feed, before the feed is formulated, according to Dr. Paul J. Wangness of the Agricultural Experiment Station at Penn State. Dr. Wangness addressed scientists and representatives of industry and government from 23 nations attending an international feed symposium held in Logan last week.

Dr. Wangness indicated "prediction equations" will eventually determine an animal's feed intake from easily measured laboratory tests and from animal characteristics such as body weight and level of milk production.

He said a Penn State research team is finding that fibrousness, ease of digestion, and bulkiness or weight per volume are highly related to how much of a proposed diet an animal will eat. Using the above three factors, the team has explained 80 per cent of the variations in intake among 33 different types of diets.

In addition to Wangness, the Penn State research team includes Drs. B. R. Baumgardt, L. F. Krabill, and J. L. Gobble - all with the Department of Dairy and Animal Science. They are analyzing many characteristics of an animal's diet relative to "predictive powers."

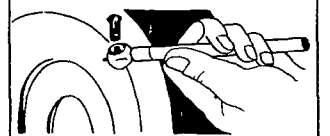
"Our goal is to predict at what level of forage or grain intake an animal will be full. Ability to predict the point of full feeding should enable farmers to provide adequate, well balanced rations for each individual animal. Dairy and livestock farmers will be able to capitalize on the unique ability of cud-chewing animals such as cows and sheep to consume large quantities of forages such as hay and silage," Dr. Wangness affirmed.

He pointed out that profitable meat and milk production depends on maximum use of forages - not usable directly by man - and minimal use of grain.

TRY A CLASSIFIED AD!

CONSUMER GUIDELINES

Tire experts recommend that air pressure be checked at least once a month. Underinflation of your car's tires causes heat build-up which can cause rapid deterioration. Proper inflation pressures are listed in the car's operating manual and are usually posted on a sticker on the door of the glove compartment or on one of the car's door pillars.



tion pressures are listed in the car's operating manual and are usually posted on a sticker on the door of the glove compartment or on one of the car's door pillars.

NEED A FARM-URBAN-COMMERCIAL BUILDING?

HUSKEE-BILT STRUCTURES Call Your **THRIVE CENTERS** SYSTEMS BY HUSKEE-BILT

Call Your HUSKEE-BILT MAN!

Huskee Gives You More!

- Full 6 x 6" Poles
- American made steel or aluminum
- Spacious Doors
- Factory Assembled Trusses
- Top grade lumber throughout
- Eave heights to 19'



Also Ask About Our . . .

CONTROLLED ENVIRONMENT BUILDING

A Thrive Center controlled environment building means heavier healthier animals, reduced labor and feed costs and almost no manure handling or odor. They pay for themselves in no time!



YOUR HUSKEE-BILT MAN

MERVIN MILLER

Lititz, PA
Phone (717) 626-5204



AVONDALE SUPPLY CENTER

Junction US 1 & 41
Avondale, PA
215 268-8238

LANCASTER SUPPLY

1027 Dillerville Rd
Lancaster, PA
717 397-4761

CHAPMAN STORE

RD2, Wescosville, PA
215-395 3381

TEMPLE SUPPLY

N 5th St Highway
Temple, PA
215 929 5264

YORK WEST STORE

26 W Market St
York, PA
717-792 2674