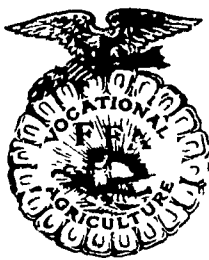


From Local Ag Teachers:



Thoughts in Passing



FARMLAND PRESERVATION & RURAL DEVELOPMENT: KEYS TO THE LAND USE PUZZLE

By D.M. Robinson
Garden Spot High School
The Pennsylvania State Office of Planning and Development has recently developed an interim report with recommendations for a Land Policy Program for Pennsylvania to help preserve farm land and assist rural development. These are just recommendations at this stage and need to be aired at public meetings. The purpose of this interim report is to familiarize you with the recommendations so you can give thought to them and make comments to your legislators if you feel they are unfair.

Pennsylvania's rural regions face many different

problems. For some, development pressures are the major concern. Other areas suffer from inadequate rural service, poor transportation facilities, or a lagging agricultural economy. Farm areas near metropolitan regions usually face the most serious challenge to the protection of productive farmland, and the preservation of rural lifestyles.

There is no single solution to the problems of farmland disappearance and rural decline, but two needs are clear:

1. Farming, as an economic venture, must be sufficiently profitable and attractive to keep farmers in business;
2. Rural regions must offer reasonable opportunities for employment and advancement, and provide satisfactory public services. (or so the state feels).

To help bring these about, the following recommendations are proposed by the interim report:

I. Establish a state-wide system of Agri-Zones as a basis for identifying and assisting viable agricultural areas. The Zones would be organized upon petition of a group of farmers and landowners, working with the Pennsylvania Department of Agriculture. They would be eligible to receive a range of assistance and benefits depending upon their needs and the location of the Agri-Zone.

II. Improve farm efficiency and quality of rural life by:

- a. Strengthening technical and financial assistance presently available to farmers and farm operators;
- b. Improving rural transportation services as suggested by results of the pilot program operated by

the Pennsylvania Department of Agriculture:

c. Targeting state investments to help improve the quality and level of community services;

d. Seeking to increase and diversify rural employment activities.

Three basic actions are needed to install the program recommended:

1. Establish Agri-Zones by appropriate legislation;
2. Develop county land use plans as a basis for identifying productive agricultural lands and determining compatible development;
3. Intensify programs to aid farmers and rural communities.

Now these are the program recommendations as I have heard them explained. I got the impression that they feel something should be done even though they are not sure just what the best thing to do is. So your input into the public hearings of these recommendations are important. You may not feel that improving rural transportation and employment opportunities will do anything but bring more urbanites to the country and further decay the rural atmosphere rather than improve the quality of rural life. It will be

Business terminated

TOWSON, Md. - A Baltimore man charged with acting as a pest control consultant and performing pest control application without a license or permit was put out of the termite treating business recently on orders of District Court Judge Edward D. Hardesty in Towson.

The defendant, Thomas Lennert, was charged on information supplied by the Baltimore County State's Attorney office by David Shriver, Supervisor of Pesticide Regulations,

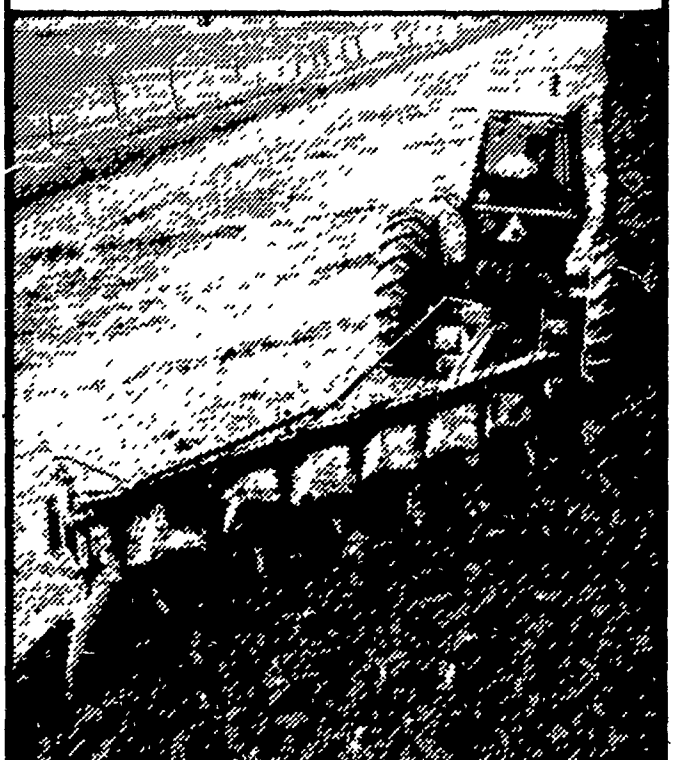
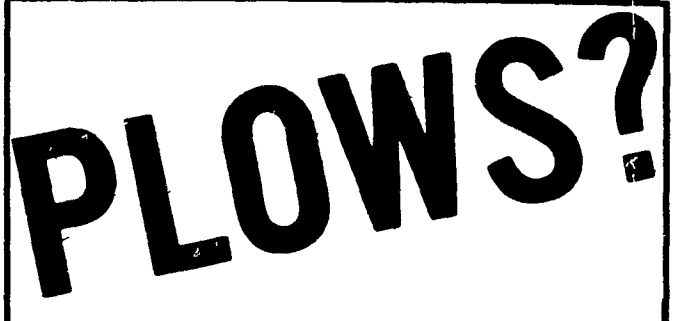
Maryland Department of Agriculture.

According to evidence presented by prosecutor George E. Barrett, Lennert performed termite control work for a Lutherville couple in 1975. Soon afterwards, the customer noticed swarming termites and despite calls to Lennert, he refused to come back to the couple's house to do further work.

Young farmers

The Elizabethtown Young Farmers will hold their summer picnic July 11 at 12:30 p.m. at the home of Ruth and Clair Hoover, Bainbridge. Those attending should bring a favorite covered dish. Barbecue, ice cream, and drinks will be served. Hay rides, games and swimming are planned, weather permitting.

up to you to make your feelings known. Remember, in this Bicentennial year, that we are supposed to be a government "Of the people, BY THE PEOPLE, and for the people." This is not possible if you the people do not say what you want.



Allis-Chalmers Will Make a Believer Out of You.

A firm believer, that is, in Allis-Chalmers' complete tillage systems aimed at suiting your fields . . . and your plans.

Monoframe plows that grow with you. Tough chisel plows that adapt to a variety of tillage plans, from minimum tillage to full field preparation. Two-way plows that excel in strength, speed and flexibility.

Look at our full line of plows and tillage equipment . . . We'll help you choose a tillage system you can believe in.

C. J. Wonsidler Bros.

RD1, Quakertown, PA 18951
Phone 215 536-1935
215-536-7523

Roy H. Buch, Inc.

Ephrata, RD2
717 859 2441

BHM Farm Equipment, Inc.

Annville, RD1, PA
717-867-2211

Grumelli Farm Service

Quarryville, PA
717-786 7318

A. J. Noss & Son, Inc.

RD2, Oley, PA
215 987-6257

L. H. Brubaker, Inc.

Lancaster, PA
717-397-5179

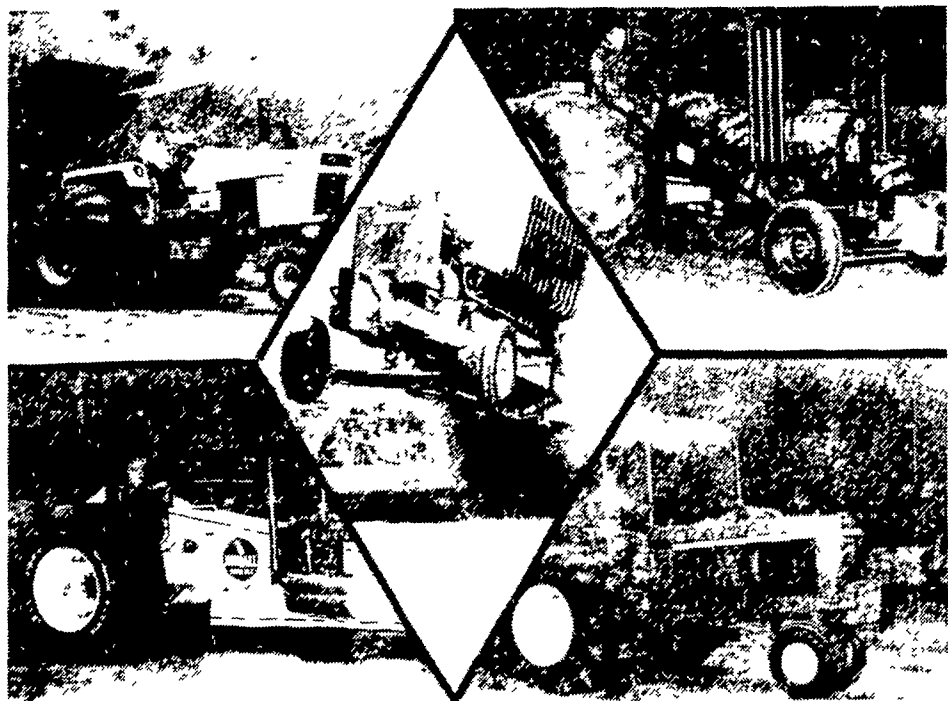
Shartlesville Farm Equipment

Shartlesville, PA
215 488-1326
H. Daniel Wenger, Prop

Ag.-Industrial Equipment

R2, Rising Sun, MD
301-658-5568

NEW JERSEY SUMMER NATIONALS TRACTOR PULL



**NTPA CLASS C SANCTION
8,000.00 PURSE**

JULY 14TH - 15TH 8:00 P.M.

**BIGGEST PULL EVER HELD IN NEW JERSEY
SEE THE TOP TRACTORS IN THE NATION**

JULY 14TH 8:00 P.M.

- 5000 Modified
- 7000 Super Stock
- 12000 Super Stock
- 9000 Modified



JULY 15TH 8:00 P.M.

- 9000 Super Stock
- 7000 Modified
- 5000 Super Stock
- 12000 Open

Reserved Seats Available

FLEMINGTON FAIR GROUNDS

Rt 31 Flemington, NJ 08822
201-782-5696