

"YOU THE FARMER THAT HAD SOME CATTLE RUSTLED?"

Commercial applicators

Pesticide applicator test given

HARRISBURG - Pennsylvania Department of Examinations for commercial pesticide applicators will be given in July in York, Adams and Franklin Counties, it was announced today by the

Pennsylvania Department of Agriculture. The examinations are scheduled for July 20 at the Adams County Extension Office, R3, Lincolnway West, Gettysburg; July 21 at the

Franklin County Extension Office, 191 Franklin Farm Lane, Chambersburg; and July 22 at the Farm Credit Building, 3301 West Market St., York. All sessions begin at 1:00 p.m. and will be strictly for the administration of exams; no instructional or educational program will be presented.

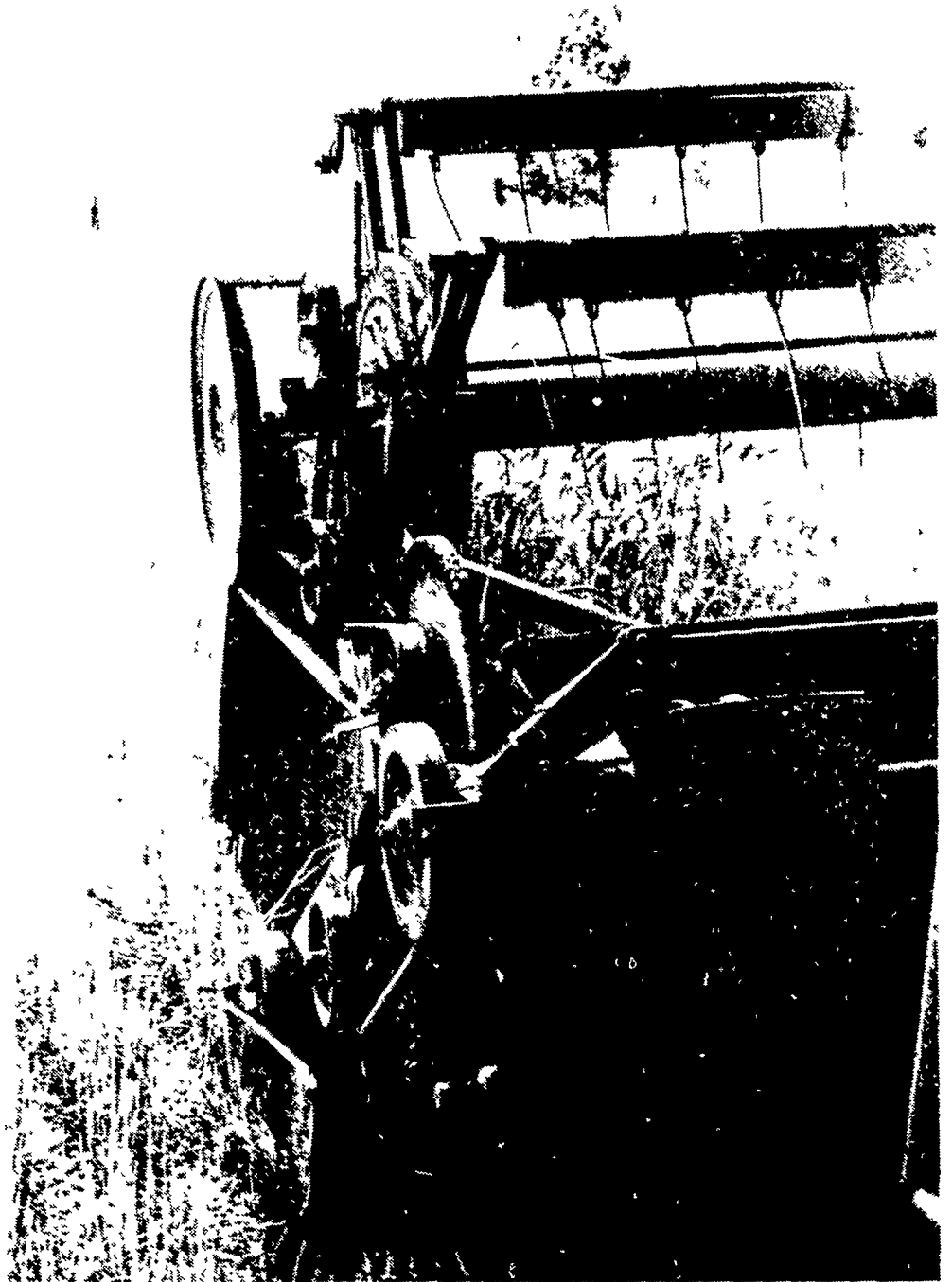
Examinations will be offered in all commercial categories. Individuals may be tested in as many areas as they desire.

Study materials are available and may be purchased from the Penn State University as an aid in preparing persons for these examinations.

These examination sessions are being coordinated by Donald Lott, pesticide inspector for the Department of Agriculture. Anyone requesting additional information or who plans to attend any of the sessions is advised to contact Lott at the Region VI Office, Box 419, Summerdale, Pa. 17093, or their local county agent's office.

Registration in advance is necessary so that proper preparations can be made.

TRY A CLASSIFIED AD!



Summer on the farm is represented by hay and grain fields and the pleasant aromas released by those crops. Warm weather, clear blue skies, and the hypnotic rumble of machinery are part of the season too. It's the height of summer.

WHY RE-TIE ANOTHER BALE?

THE TWINE WITH THE EXTRA HIGH KNOT STRENGTH



EXTRA HOLLAND BALER TWINE

- the ball with the wooden plug
- 9,000' and 10,000'

MADE FROM NO. 1 EAST AFRICAN FIBER THE FINEST AVAILABLE

P. L. ROHRER & BRO., INC.

SMOKETOWN, PA Phone Lanc. 717-299-2571

Vegetables up at PSU show

UNIVERSITY PARK — Extensive vegetable variety trials and weed control studies are underway at the Horticultural Research Farm of The Pennsylvania State University, nine miles west of the campus on Route 45. Of interest to home gardeners and commercial vegetable growers, the field experiments will be featured during the annual Ag Progress Days August 25 and 26.

All America selections are included in the trials, one aspect of experiments at the Rock Springs Agricultural Research Center, site of Ag Progress Days. The variety trials will feature sweet corn, tomatoes, snap beans, muskmelons, cucumbers, and watermelons. Other crops in the trials are cabbage, pumpkins, peppers, and winter squash.

Weed control studies are in progress on snap beans, lima beans, kidney beans, tomatoes, cabbage, beets, carrots, onions, sweet corn, cucumbers, and asparagus. Herbicides are applied in several ways — preplant incorporation, delayed preemergence, and postemergence

Ag Progress Days will also feature plots of a Penn State experimental high sugar sweet corn hybrid. Sugar is retained in the kernels of this experimental hybrid for longer periods of time after harvest than for standard sweet corn types. Ears can be harvested over a seven to eight day period as a result of the higher sugar content.

Elsewhere August 25 and 26, the effects of fumigants and plastic types on vigor and weed control will be shown for tomatoes, peppers, eggplants, and

watermelons. Plantings will be compared through both clear and black plastic in untreated areas and areas fumigated with either chloropicrin or a mixture of methyl bromide and chloropicrin.

A direct-seeded cabbage variety trial will feature over three dozen varieties and unnamed selections from numerous seed companies. These plots will be seeded late in the season to rate varieties for damage by black speck (pepper spot) in addition to table qualities.

Gehl dealer named

LITITZ — Binkley & Hurst Bros., 133 Rothsville Station Road, Lititz, has been named the franchised dealer for Gehl farm machinery in this area. The announcement was made jointly by Gehl Company officials at West Bend, Wisconsin, and their representative in this area, Don E. Powell, 253 S. Jackson Street, Strasburg. The Gehl Company specializes in forage harvesting, handling and feedmaking farm machinery

According to Powell, Binkley & Hurst Bros. was chosen as Gehl dealer for this area because "it is best qualified with personnel and facilities to handle the sales and service opportunities of the established and expanding Gehl farm machinery line."

Spokesmen at the dealership express their confidence in the Gehl Company, and invite all to stop by and see the complete machinery line now on display.

COME! and SEE!

KUBOTA L225

A versatile tractor with a powerful 24HP water-cooled diesel engine

KUBOTA

COME IN AND FIND OUT ALL ABOUT SAVINGS

KUBOTA B6000

A complete, 12.5HP, 2-cylinder diesel tractor

KUBOTA

Big Savings!

KUBOTA L175

A new breed of tractor with a powerful 17HP water cooled diesel engine

KUBOTA

PARTS — SALES — SERVICE

KELLER BROS. TRACTOR CO.

949-6502 BUFFALO SPRINGS 949-6502
BETWEEN SCHAEFFERSTOWN & CORNWALL ON RT. 419 LEBANON CO.