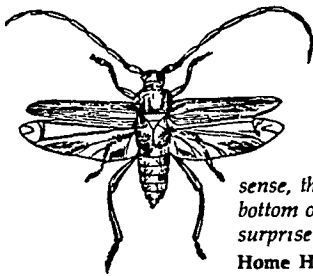




JULY 5 — 11, 1976

Now shepherds drive their flocks into the shade.

Gather herbs you wish to preserve through the winter US Marine Corps created by Congress July 11, 1798 Full moon July 11 Dog days begin Average length of days for the week, 15 hours, 10 minutes Salvation Army founded July 9, 1865 Declaration of Independence read in Philadelphia July 8, 1776 It was 120 degrees in South Dakota July 5, 1936 Success is a journey, not a destination



Ask the Old Farmer: Can you tell me why many early American tankards had glass bottoms? E.R., Newark, NJ

Places where liquor was sold in ancient times were frequented by devious characters. It was good sense, therefore, if a man could see through the bottom of his mug as he drank, and thus avoid surprise

Home Hints: To clean a vinegar cruet that has become cloudy, fill with water, add a little ammonia, let stand for several hours or overnight then rinse and clean with hot water

OLD FARMER'S WEATHER FORECASTS

New England: Week begins hot, then rain, latter part clearing inland and cooler

Greater New York-New Jersey: Clear and hot at first, then thundershowers, week ends cloudy and warm

Middle Atlantic Coastal: Sunny and hot to start, then scattered showers, rain latter part, then cooler over weekend

(All Rights Reserved Yankee Inc. Dublin, NH 03444)

Omaha Cattle

July 1, 1976

Weekly 51 - Cattle - compared with the previous week's close:

Closing prices on slaughter steers were steady with late the previous week and heifer prices were firm to 50 cents higher, although late demand narrow. Cows were steady and bulls weak to 1.00 lower.

FOUR DAY RECEIPTS 17,800, previous week 18,500 and 13,200 a year ago. The fed cattle trade followed a relatively stable course with day-to-day price variations usually mild. Marketings were little changed from the previous week and were well distributed over the trading period. Buyers were again selective for desirable cutability and consignments carrying few if any yield Grade 4 animals in best demand, they were also quite number - conscious on the late rounds in view of approaching non-slaughter Fourth of July weekend and a severely depressed carcass trade. The steer run was attractive with a liberal percentage Choice, but still a moderate volume 4-5 1225-1425 lbs. included. Much of the heifer supply was good to average choice. Steers made up approximately 55 pct., heifers 30 pct. and cows 12 pct.

STEERS: Several loads Choice 2-3 1022-1217 lbs. 40.25-40.50. Moderate volume Choice and Prime 3-4 1114-1281 lbs. 39.00-40.00, load 1325 lbs. 38.50 late. Choice 2-4 predominantly 3 1000-1225 lbs. 39.00-40.00, Choice 3-4 1200-1300 lbs. 37.00-39.00, moderate volume 4-5 1250-1420 lbs. 34.25-36.50. Mixed Good and Choice 2-4 975-1250 lbs. 38.25-39.25. Good 2-3 35.00-38.00, holsteins 35.00-36.50. Standard and Good 2-3 34.00-35.00.

Average - of LS-214, detailed quotations, for Choice 900-1100 lbs. steers this week 39.75, Choice 1100-1300 lbs. 38.75. Average weight of steers this week 1140 lbs. as compared 1137 lbs. previous week. Average weight of heifers this week 971 lbs. as compared 987 lbs. previous week.

HEIFERS: Load Choice and Prime 3-4 993 lbs. 40.40. Choice 2-4 875-1050 lbs. 38.25-39.75, few consignments to 40.00. Mixed Good and Choice 2-3 800-1000 lbs. 37.25-38.50. Good 2-3 35.00-37.50. Small lots standard and Good 2-3 32.50-35.00.

COWS: Utility and Commercial 2-4 25.00-28.00, few 28.50. Canner and Cutter 22.00-25.00. Mixed Cutter and Utility 25.25-25.50.

BULLS: 1-2 1400-2000 lbs. 31.00-35.50, few 1 36.00-36.50. MGI.

Sale reports

James M. Eshelman Sale Mount Joy, Pa. June 29, 1976

Top Cow - Daughter by Northmoor Leader Hector - \$1410.00.

2nd Top Cow - \$1350.00. 2 full sisters brought \$1300.00 each; 10 animals sold for \$1000.00-\$1410.00; Average price was \$785.

Herd consisted of 50 Certified & Accredited. 500 gal. milk tank \$1520. Auctioneers were Carl

Diller, John Diller & Everett Kreider.

TRY A CLASSIFIED AD!

Joliet

June 30

CATTLE: 3200. Trading slow. Early sales slaughter steers steady to 25, instances 50 higher. Heifers fully 25 to 50 higher. Receipts include about 17 percent high Choice and Prime steers; about 15 percent heifers.

SLAUGHTER STEERS: Early sales high Choice and Prime 3-4, few 5 1225-1425 lbs. 36.75-39.00, mostly 38.50 down. Choice 2-4 1050-1250 lbs. 38.75-39.50, 2 loads 3 1100-1150 lbs. at 39.75.

SLAUGHTER HEIFERS: Choice, few Prime 2-4 900-1050 lbs. 38.25-39.50. Load 3 about 1000 lbs. at 39.75.

July 1

Weekly Cattle

CATTLE: Friday through Wednesday's salable receipts 9500, 5 days last week 9690, last year 5389. High Choice and Prime steers 50 to 1.00 lower than last Friday. Choice steers steady. Slaughter heifers 25 to 50 higher than last Friday.

SLAUGHTER STEERS: High Choice and Prime 3-4, few 5, 1250-1425 lbs. 38.50-39.00, mostly 38.50 down. Choice 2-4 1000-1250 lbs. 38.75-39.50, 2 loads 3 1100-1150 lbs. 39.75 Wednesday, load 3 1031 lbs. 40.00 Monday. Choice 4 1200-1400 lb. 37.00-38.50. Mixed Good and Choice 2-3 975-1250 lb. 37.00-38.50. Good 2-3 900-1300 lbs. 34.00-37.00.

SLAUGHTER HEIFERS: Choice, few Prime, gwar 900-105 lbs. 38.25-39.00 Monday, up to 39.50 Wednesday, load 3 about 1000 lbs. 39.75 Wednesday. Mixed Good and Choice 2-3 700-1000 lb. 36.50-38.25 Wednesday. Good 2-3 750-950 lbs. 34.00-36.50.

Thomasville

Thomasville, PA June 30, 1976

CATTLE 103. Compared with last Wednesday's market, slaughter steers steady to 25 cents lower. Slaughter cows steady, 25 cents to 50 cents lower. Choice slaughter steers 36.85-38.00, Good 34.25-36.35, few Utility 29.75-31.25. Few Good slaughter heifers 30.60-34.85, few Utility 23.75-26.25. Utility & High Dressing Cutter slaughter cows 29.00-30.85, Cutters 27.00-28.50, Canners 23.50-26.00, Shells down to 19.00. Couple Standard slaughter bullocks 30.75 and 31.75. Few Yield Grade No. 2 1150-1295 lbs. slaughter bulls 34.00-35.60. Medium & Good 350-800 lbs. feeder steers 28.85-35.25; Medium 350-635 lbs. feeder heifer 22.35-36.00; few Medium & Good 350-580 lbs. feeder bulls 24.00-34.75.

CALVES 90. Few Good vealers 45.00-47.50, few Standard 42.00-44.50, Utility 90-115 lbs. 28.00-32.00, 65-85 lbs. 22.00-28.50. Farm calves, few holstein bulls 90-110 lbs. 32.50-35.50.

HOGS 49. US No. 2-4 250-300 lbs. barrows & gilts 43.25-49.00. Couple US No. 1-3 310 and 460 lbs. sows 38.60-40.25, few No. 2-3 300-350 lbs. 33.25-35.50. Boars 32.50-36.50.

FEEDER PIGS 75. US No. 1-3 25-35 lbs. feeder pigs 26.00-33.50 per head, few No. 1-3 40-50 lbs. 34.50-40.00 per head.

SHEEP 11. Couple lots Good 85 and 90 lbs. spring slaughter lambs at 45.00, one 50 lbs. at 39.50. One Slaughter ewe at 9.00.

Greencastle Cattle

Greencastle, Pa. June 28, 1976

CATTLE 139. Compared with last Monday's market, slaughter cows 50 cents to \$1 higher. Few Good slaughter steers 34.75-35.50, few Standard 29.60-33.25. Standard slaughter heifers 28.75-31.60, few Utility 25.85-28.10. Utility & High Dressing Cutter slaughter cows 29.25-31.10, Cutters 26.10-28.85, Canners 21.00-25.85, Shells down to 19.50. Yield Grade No. 2 1010-1550 lbs. slaughter bulls 30.50-36.10. Few Good 400-750 lbs. feeder steers 32.00-36.00; Medium & Good 400-850 lbs. feeder heifers 21.50-28.00;

Medium 300-700 lbs. bulls 22.10-28.75.

CALVES 172. Vealers 53.50 and Good 45.00-47.00. Standard 37.00-39.00-120 lbs. 27.50-33.00 lbs. 23.00-28.00.

HOGS 26. US No. 245 lbs. barrows & one lot No. 1-3 49.85.

FEEDER PIGS 100. US No. 1-3 25 lbs. feeder steers 28.00 per head, one 115 lbs. at 26.00 per head.

SHEEP 11. Few spring lambs 30.00-38.00. Slaughter ewe at 9.00.



Only Bravo controls all three potato fungus diseases.

Bravo 6F fungicide can help you grow yields. It's the only fungicide that controls three major potato diseases - early blight and Botrytis vine rot. Spray Bravo right from the start. And spray it early. You'll like the convenient flowable form. For complete information, we're your local Dealer. Shamrock dealer.

- AGWAY INC.
- USS AGRI-CHEMICAL
- HELENA CHEMICAL CO.
- CENTRAL CHEMICAL CORP.
- MILLER CHEMICAL CO.
- OR SEE YOUR LOCAL AG CHEMICAL SUPPLIER

NOTICE: PENNSYLVANIA STATE LABEL 3/4 PINT ON 7 DAY SCHEDULE FOR LATE BLIGHT ON POTATO. SEE YOUR DEALER FOR DETAILS.

STOLTZFUS MEAT MARKET

ATTENTION FARMERS
CUSTOM BUTCHERING
OUR SPECIALITY

—FRESH BEEF AND PORK—

OUR OWN HOME MADE
SCRAPPLE & FRESH SAUSAGE

Bacon and Country Cured Hams
Orders taken for freezer Meats

PH. 768-3941

Directions: 1 block east of Intercourse on Rt. 772 - Newport Road

STORE HOURS THURS. FRI. SAT.
9-5 9-8 9-5

VERNON E. MYER

STEEL BUILDINGS AND GRAIN STORAGE

RD4, LEBANON, PA 17042
PHONE: (717) 867-4139

For Further Information On Our STEEL BUILDINGS And GRAIN STORAGE . . . Feel Free To Mail Attached Coupon Or Call Today! No Obligation.

COMMERCIAL and AGRICULTURAL BUILDINGS WE OFFER COMPLETE ERECTION ON ANY SIZE OR STYLE BUILDING

Mail Coupon Today!

SEND STEEL BUILDINGS LITERATURE
 SEND GRAIN STORAGE LITERATURE

NAME.....
ADDRESS.....
CITY.....STATE.....ZIP.....
TELEPHONE.....

SPECIAL 21% discount ON ALL BINS ORDERED IN JUNE & JULY