

Livestock market and auction news

Lancaster Market

Monday, June 7

Cattle	Calves	Hogs	Sheep
Today	1543	134	1012 148
Last Monday	Holiday		
Last Year	1613	102	608 135
Monday's Auction	1470	137	970 173
Last Monday's Auction	Holiday		

CATTLE: Compared to last Wednesday slaughter steers mostly 1.00 lower, some sales high Choice and Prime 2.00 lower; cows steady; bullocks steady; bulls fully steady.

SLAUGHTER STEERS: High Choice and Prime 3-4 1075-1325 lb. 39.75-41.35, 1350-1490 lb. 37.75-39.00, few 4-5 1175-1275 lb. 35.60-39.10; Choice mainly 2 1000-1275 lb. 40.75-41.75; Choice 2-4 1000-1400 lb. 38.75-40.75; Choice 4-5 1100-1400 lb. 36.75-39.00; high Good and low Choice 2-3 1000-1275 lb. 37.50-39.25; Good 2-3 37.00-38.25; Standard and low Good 35.50-37.60.

SLAUGHTER HEIFERS: Good 2-3 850-950 lb. 34.75-38.75.

COWS: Utility and high dressing Cutter 1-3 31.00-33.00, couple 33.00-33.50; Cutter 1-2 29.00-31.25; 700-800 lb. beef breed 24.00-25.50, couple lots 500-700 lb. 22.00-24.00.

BULLOCKS: Choice 1050-1250 lb. 39.75-41.50; Good 1000-1200 lb. 35.00-39.00.

BULLS: Yield grade 1 1100-1800 lb. 39.00-40.85, couple 41.25-41.60; yield grade 2 1000-1300 lb. 34.75-39.10.

VEAL CALVES: Vealers uneven, Good to Prime 4.00-6.00 lower, Standard and Good 85-110 lb. mostly steady.

VEALERS: Prime 68.00-72.00; Choice 60.00-68.00; high Good and low Choice 48.00-60.00; Good 40.00-48.00; Standard and Good 85-110 lb. 32.00-40.00.

SHEEP: Spring lambs fully steady, few sales 40-55

Vintage Auction

Tuesday, June 8

Cattle	Calves	Sheep
Today	975	439 64
Last Tuesday	1365 520 76	
Last Year	954 390 43	

CATTLE: Compared to last Tuesday slaughter steers 1.00-2.00 lower, most decline on early sales; cows mostly steady; bulls fully steady.

SLAUGHTER STEERS: High Choice and Prime 3-4 1075-1325 lb. 39.00-40.50, few 4-5 38.00-39.00; Choice mainly 2 1000-1325 lb. 39.75-41.00, seven head 41.00-41.75; Choice 2-4 1000-1325 lb. 38.50-40.00, 4-5 1175-1450 lb. 36.00-38.50; high Good and low Choice 2-3 1000-1400 lb. 37.00-38.50; Good 2-3 36.50-37.75; few Standard 35.00-36.50.

SLAUGHTER HEIFERS: Choice 2-4 885-1000 lb. 36.75-37.75, couple 39.75-41.25.

COWS: Utility and high dressing Cutter 1-3 30.50-33.00, few 33.00-33.50; Cutter 1-2 29.00-31.00; Canner and low Cutter 27.00-29.00.

BULLS: Yield grade 1 1100-1800 lb. 37.50-39.35, couple 40.00-40.85; yield grade 2 1000-1300 lb. 34.75-37.50.

VEAL CALVES: Vealers 5.00-10.00 lower. Supply included 271 in graded sale of which 32 per cent returned to farm.

VEALERS: Few Choice 48.00-52.00; high Good and low Choice 44.00-48.00; Good 40.00-44.00; Standard and Good 100-115 lb. 37.00-41.00, 85-100 lb. 28.00-37.00, 65-85 lb. 22.00-28.00; few Utility 65-80 lb. 12.00-20.00.

RETURNED TO FARM: 24 head 90-105 lb. Holstein lb. 3.00 higher; slaughter ewes 2.00-3.00 higher.

SPRING LAMBS: Choice and Prime 60-90 lb. 53.00-55.50, 40-55 lb. 55.00-60.50; Good 50-80 lb. 45.00-50.00.

SLAUGHTER EWES: Utility and Good 14.00-22.00.

Lancaster Auction

Wednesday, June 9

Cattle	Calves	Hogs	Sheep
Today	832	78	563 13
Last Wednesday	1565	138	1039 39
Last Year	1134	116	746 27

WEDNESDAY'S AUCTION
902 91 463 13
1615 132 1352 69

CATTLE: Compared to Monday slaughter steers steady to 50 higher with Choice and Prime 4-5 mostly 50 higher; cows steady to weak; bulls 50-1.00 higher.

SLAUGHTER STEERS: High Choice and Prime 3-4 1075-1250 lb. 40.00-40.75, few 1325-1400 lb. 38.85-39.75; couple lots 4-5 1200-1250 lb. 38.10-39.00; Choice mainly 2 1100-1300 lb. 39.75-40.75; Choice 2-4 1000-1325 lb. 38.60-40.25, Choice 4-5 1100-1400 lb. 37.50-38.60; high Good and low Choice 2-3 950-1250 lb. 38.00-39.25; Good 2-3 1000-1400 lb. 37.00-38.75; Standard and low Good 1-2 35.25-36.50.

SLAUGHTER HEIFERS: Choice 2-4 850-1000 lb. 38.60-39.35.

COWS: Utility and high dressing Cutter 1-3 30.75-32.50, couple 32.50-33.00; Cutter 1-2 29.85-31.50; Canner and low Cutter 25.50-27.00.

BULLS: Yield grade 1-2 1100-1800 lb. 39.50-41.50, couple 41.50-42.00 with two head 43.00.

VEAL CALVES: Vealers uneven, Choice and Prime 4.00-6.00 higher, Standard and Good mostly steady.

VEALERS: Prime 72.00-80.00; Choice 62.00-72.00; Good to low Choice 52.00-60.00; Good 42.00-52.00; Standard and Good 85-110 lb. 32.00-40.00.

SHEEP: Few Good and Choice 40-65 lb. spring lambs steady at 45.00-52.00.

heifers 41.00, 64 head 100-115 lb. Holstein bulls 49.50-52.00.
SHEEP: Spring lambs 5.00-8.00 lower.

New Holland

Thursday, June 10, 1976

Cattle	Calves	Sheep
Today	1438	413 62
Last Thursday	1635	438 29
Last Year	1818	348 8

CATTLE: Compared to last Thursday slaughter steers steady to 50 lower, instances 1.00 lower on high Choice and Prime; cows uneven, Utility 50-1.00 lower, Cutter mostly steady; bullocks fully steady; bulls steady to 1.00 lower with the decline on yield grade 1.

SLAUGHTER STEERS: High Choice and Prime 3-4 1100-1375 lb. 39.75-40.85, few 4-5 1400-1500 lb. 37.85-38.60, one lot 5 1460 lb. 34.35; Choice mainly 2 975-1325 lbs. 40.50-40.85, few 41.00-41.25; Choice 2-4 1000-1325 lb. 39.50-40.75, few 925-1000 lb. 38.75-39.50; high Good and low Choice 2-4 950-1275 lb. 38.00-39.50; Good 2-3 1000-1200 lb. 36.75-38.50; Standard and low Good 1-3 35.50-37.50.

SLAUGHTER HEIFERS: Couple lots Choice 2-3 800-880 lb. 36.85-37.50.

COWS: Utility and high dressing Cutter 1-3 30.50-33.00, few 33.00-34.00; Cutter 1-2 29.00-31.25; Canner and low Cutter 25.50-29.00.

BULLOCKS: Choice 1000-1250 lb. 39.00-40.75, few 42.00-42.60; Good 975-1250 lb. 35.50-38.85.

BULLS: Yield grade 1 1100-1800 lb. 39.00-41.00, few 41.00-41.75, couple 1975-2060 lb. 40.50-40.85; yield grade 2 1000-1350 lb. 36.25-39.00.

FEEDER STEERS: Around 50 head Choice and Prime 950-1025 lb. with Good to low Choice slaughter finish 37.75-39.50.

VEAL CALVES: Vealers 2.00-4.00 lower.

VEALERS: Prime 67.00-72.00; Choice 53.00-64.00; high Good and low Choice 44.00-54.00; Good 38.00-46.00; Standard and Good 90-105 lb. 30.00-38.00, 70-85 lbs. 22.00-30.00; few Utility 60-65 lbs. 12.00-15.00.

RETURNED TO FARM: Bulk 90-110 lb. Holstein bulls

Lancaster Weekly

Friday, June 11, 1976

Cattle	Calves
This Week	5100 1100
Last Week	5054 1099
Last Year	6693 965

CATTLE: Slaughter steers 50-1.00 lower, some early sales High Choice and Prime 2.00 lower; Utility cows 50-1.00 lower, Cutter steady to weak; bullocks fully steady; bulls steady to 1.00 lower than last week's high close. Supply included 74 percent slaughter steers, 10 percent cows, 7 percent bulls, 3 percent heifers with the balance feeder steers.

SLAUGHTER STEERS: High Choice and Prime 3-4 1075-1325 lb. 39.75-41.00; few 41.00-41.35, 1350-1490 lb. 37.75-39.00, few 4-5 1100-1400 lb. 35.50-39.00, one lot 5 1460 lb. 34.35; Choice mainly 2 1000-1275 lb. 40.50-41.50, few 41.50-41.75; Choice 2-4 1000-1325 lb. 38.75-40.75; Choice 4-5 1100-1400 lb. 36.75-39.00; high Good and low Choice 2-3 950-1250 lb. 37.50-39.50; Good 2-3 1000-1200 lb. 36.75-38.50; Standard and low Good 1-3 35.00-37.50.

SLAUGHTER HEIFERS: Choice 2-3 850-1000 lb. 36.75-38.75, few 39.00-41.25.

COWS: Utility and high dressing Cutter 1-3 30.50-33.00, few 33.00-34.00; Cutter 1-2 29.00-31.50, 700-800 lb. beef breed 24.00-25.50; Canner and low Cutter 25.50-29.00, couple lots 500-700 lb. beef breed 22.00-24.00.

BULLOCKS: Choice 1000-1250 lb. 39.00-41.50, few 42.00-42.60; Good 975-1250 lb. 35.00-39.00.

and heifers 38.00-48.00, few 52.00-57.00.

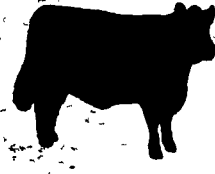
SHEEP: Spring lambs 3.00-5.00 lower.

SPRING LAMBS: Choice and Prime 55-80 lb. 51.00-58.00; few Good 60-85 lbs. 37.00-45.00.

New Holland Dairy

Reported receipts of cows, 12 heifers and 4 calves. Market lower than last week. Load of Maine fresh cows 600-630; Springers 510-545; Load of Pa. fresh cows 670-805; Load of Franklin County springers 600-1100; Load of Canadian fresh cows 630-900-910.

Locally consigned cows 475-720; springing heifers 475-550; bulls 150-480.



BULLS: Yield grade 1 1100-1800 lb. 38.50-41.00, few 41.00-42.00 with a couple 43.00; yield grade 2 1000-1300 lb. 34.75-39.00.

VEAL CALVES: Vealers 4.00-6.00 lower.

VEALERS: Prime 67.00-72.00, few 72.00-80.00; Choice 54.00-64.00; Good to low Choice 48.00-54.00; Good 38.00-46.00; Standard and low Good 90-110 lb. 30.00-40.00, 85 lb. 22.00-30.00; few Utility 60-80 lb. 12.00-20.00.

RETURNED TO FARM: Bulk 90-110 lb. Holstein bulls and heifers 38.00-52.00 with few 52.00-57.00.

EVERY FRIDAY FEEDER CATTLE
12 NOON
Lancaster
Stockyards, Inc.

LEBANON VALLEY LIVESTOCK MARKET, INC.

1 mile East of Fredericksburg along Route 222
PHONE JONESTOWN 865-2881

Sale every Tuesday at 1:30 P.M. starting with feeder cattle and pigs.

COMPLETE LIVESTOCK BUYING SERVICE
Specializing in order buying of Stockers & Feeders
FRANK DUSSINGER
LIVESTOCK ORDER BUYER
PHONE [717] 397-7539
MARTIN LIVESTOCK
Washington Boro, PA 17582
Office Phone [717]-872-5491
John Bowman
Phone: [717] 653-5728
Ron Ranck
Phone: [717] 656-9849

NEW HOLLAND The Action Auction AUCTIONS make the difference in marketing livestock!
NEW HOLLAND makes the difference in auctions!

MONDAY'S ACTION:
8:00 A.M. - Fat Hogs
10:00 A.M. - Horse Sale
11:00 A.M. - Hay, Straw & Ear Corn
2:30 P.M. - Fat Steers, Bulls, Cows & Veal

WEDNESDAY'S ACTION:
12:00 Noon - Hay, Straw & Ear Corn
12:30 P.M. - Dairy Sale

THURSDAY'S ACTION:
11:00 A.M. - Beef Sale
Order of Sale: Bulls, Fat Steers, Cows, Veal

NEW HOLLAND SALES STABLES INC.
New Holland, PA
Abram W. Diffenbach, Manager Phone: 717-354-4341

HAY, STRAW AND EAR CORN SALE
Every Wednesday at 12 Noon
HARVEY Z. MARTIN
North Maple Ave., Leola, PA
Home Phone 215-445-5303
We Buy On Orders.
NEW LOCATION - David H. Good's Farm Equipment, Leola, PA. 717-656-7270. 1/2 mile North of Rt. 23 in Leola on Maple Ave. or off Rt. 222 at Rt. 772 at the Brownstown Exit, south 2 miles to Peace Road, turn left, 1st road right on Maple Ave.

FORTY-TWO YEARS OF SERVICE . . .
to the farmer, to the dealer and to the packer.
May we serve you?
S. K. SHOTZBERGER, INC.
LIVESTOCK TRANSPORTATION
Gene Zwally, President
Marvin Johns, Secy.-Treasurer
P.O. Box 925, Lancaster, PA 17604
Phone: 393-4641 (day or night)

ATTENTION FARMERS!!
SPRAY MATERIALS AND INSECTICIDES
Chordane Liquid & Granular Available Now.
Quality Conklin Products
Liquid Nitrogen Trailer Load Lots.
Coker 16 Seed Corn
(Check Our Prices)
MELVIN R. WEAVER
RD1 Box 529 Manheim, PA
PH: 717-569-6576

VINTAGE SALES STABLES, INC.
BULLS, STEERS, BUTCHER COWS, LAMBS AND VEAL CALVES SOLD ON COMMISSION
SALE EVERY TUESDAY 11 A.M.
HOG SALES WEEKLY - WED. & SAT. 9 A.M.
Get calves in early for grading & weighing. No weight loss.
FOR MARKETING INFORMATION
PHONE AREA CODE 717-442-4181
Home Phone 215-458-5060
L. Robert Frame, Manager
Box 100 Paradise, PA
10 miles East of Lancaster on Rt. 30