

Make every month Dairy Month — use Atlantic Genetic Power Profit-Maker sires

(production summaries are USDA May/76; type data is latest from breed associations)



15H123 Whittier-Farms Apollo **ROCKET** — GP [84] & PQ
294 Daus. in 196 Herds Ave. 16,484M 3.51% 579F
Pred. Dif. (94% rpt) +2,128M +\$151 +42F
56 Classified Daus. Ave. 78.1 (act.) 78.7 (age-adj.)



15H120 Harrisburg **GAY** Ideal — EX [92] & GM
1,230 Daus. in 582 Herds Ave. 15,711M 3.65% 574F
Pred. Dif. (98% rpt.) +988M +\$74 +24F
190 Classified Daus. Ave. 79.6 (act.) 81.6 (age-adj.)



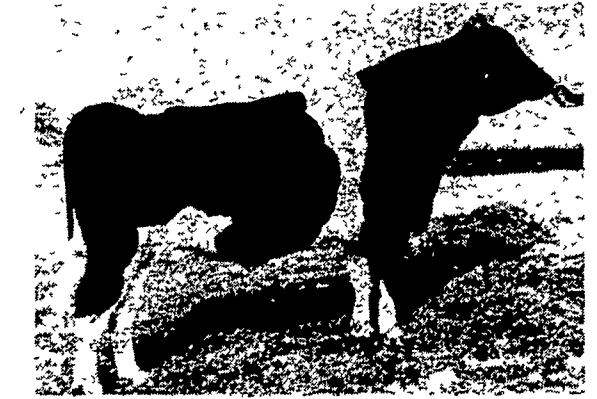
15H157 Diamond-S Pietje **STANDOUT** — GP
49 Daus. in 37 Herds Ave. 16,113M 3.46% 557F
Pred. Dif. (67% rpt.) +1,329M +\$83 +14F
(no official type summary to date)



15H151 Cumva **PROUD** Performer — VG & PQ
118 Daus. in 79 Herds Ave. 14,899M 3.63% 541F
Pred. Dif. (83% rpt) +825M +\$61 +19F
(no official type summary to date)



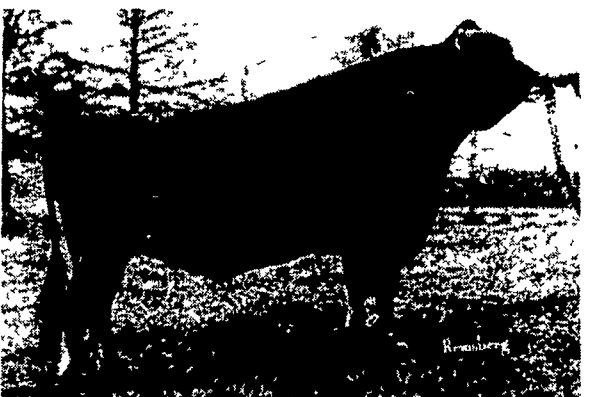
15G117 Foremost **TOP** JOLLY
29 Daus. in 7 Herds Ave 10,787M 4.27% 461F
Pred. Dif. (43% rpt.) +925M +\$77 +31F
25 Classified Daus. Ave. 85.2



15H103 Penstate **IVANHOE** STAR — VG [89] & GM
13,191 Daus. in 2,747 Herds Ave. 15,875M 3.75% 596F
Pred. Dif. (99% rpt) +975M +\$89 +41F
3,805 Classified Daus. Ave. 79.7 (act.) 81.0 (age-adj.)



15H136 Paclamar **TRIUNE** Complete — VG [89] & GM
1,697 Daus. in 746 Herds Ave 16,018M 3.45% 552F
Pred. Dif. (98% rpt.) +886M +\$39 +8F
444 Classified Daus. Ave. 79.2 (act.) 81.3 (age-adj.)



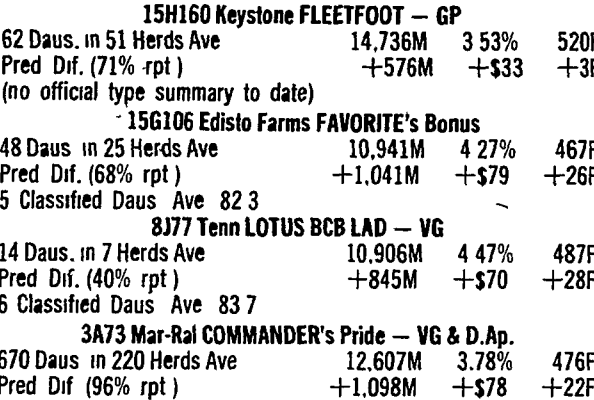
15J48 BS Noble **SUPERB**
73 Daus. in 15 Herds Ave 10,155M 4.76% 483F
Pred. Dif. (63% rpt) +934M +\$79 +32F
19 Classified Daus. Ave 83.5



15H143 Simpson's Burkgov **SNOWMAN** — EX & PQ
114 Daus. in 86 Herds Ave 14,328M 3.62% 518F
Pred. Dif. (84% rpt.) +633M +\$40 +7F
(no official type summary to date)



15H138 Thonyma **KEYNOTER** — GP & PQ —
73 Daus. in 56 Herds Ave. 14,819M 3.62% 537F
Pred. Dif. (76% rpt) +457M +\$28 +4F
(no official type summary to date)



15H160 Keystone **FLEETFOOT** — GP
62 Daus. in 51 Herds Ave 14,736M 3.53% 520F
Pred. Dif. (71% rpt) +576M +\$33 +3F
(no official type summary to date)
15G106 Edisto Farms **FAVORITE's** Bonus
48 Daus. in 25 Herds Ave 10,941M 4.27% 467F
Pred. Dif. (68% rpt) +1,041M +\$79 +26F
5 Classified Daus. Ave 82.3
8J77 Tenn **LOTUS** BCB LAD — VG
14 Daus. in 7 Herds Ave 10,906M 4.47% 487F
Pred. Dif. (40% rpt) +845M +\$70 +28F
6 Classified Daus. Ave 83.7
3A73 Mar-Ral **COMMANDER's** Pride — VG & D.Ap.
670 Daus. in 220 Herds Ave 12,607M 3.78% 476F
Pred. Dif. (96% rpt) +1,098M +\$78 +22F
126 Classified Daus. Ave 85.0
1B62 Alphal Elaim **LAIRD** — EX
44 Daus. in 9 Herds Ave 11,767M 4.23% 498F
Pred. Dif. (48% rpt.) +692M +\$56 +21F
29 Classified Daus. Ave. 83.7



15H165 Producer's Skylark **COMET** — GP & PQ
139 Daus. in 13 Herds Ave. 17,602M 3.58% 630F
Pred. Dif. (54% rpt.) +874M +\$73 +29F
(no official type summary to date)

These sires, and dozens more, are now available daily through our Professional Technician Service.
We are also the distributor for Carnation/Genetics and several other AI organizations in this area.

DIRECT HERD BREEDERS: check with us on semen availability and price before you place another order!

Atlantic

LIVESTOCK SERVICES BREEDERS COOPERATIVE

Member — NAL Affiliated Breeders.

24-Hour Toll-Free Phone Service:

Lancaster area 569-0411
throughout Pennsylvania 800-732-0391
Delaware & Maryland 800-233-0216

