

Hog Markets

Lancaster Market

Monday, May 24
 HOGS: Barrows and gilts steady to 50 higher.
 BARROWS AND GILTS:
 US 1 200-235 lb. 52.50-53.00;
 US 1-2 200-240 lb. 52.00-52.50;
 US 1-3 200-255 lb. 50.85-51.75.

Lancaster Auction

Wednesday, May 26
 HOGS: Barrows and gilts 50-75 higher.
 BARROWS AND GILTS:
 US 1 200-235 lb. 53.00-53.50;
 US 1-2 200-240 lb. 52.50-52.85;
 US 1-3 200-240 lb. 51.50-52.50;
 US 2-3 240-260 lb. 49.00-51.25.

Indianapolis

Thursday, May 27
 HOGS: 1500.
 Barrows and gilts active, strong to 50 higher, mostly 25 up.
 US 1-2 200-230 lb. 51.50-51.75; near 20 head 5200; US 1-3 200-240 lb. 51.00-51.50; US 2-3 240-260 lb. 50.00-51.00; Few lots US 2-4 260-275 lb. 49.00-50.00; Very uneven lot 285 lb. 48.50.

New Holland

Monday, May 24
 Hogs: 1643.
 Retail 53-52;
 Heavyweights 48-51;
 lightweights 48-51; wholesale 51-52; sows 38-42.75 and boars 37-42.50.

Lancaster Feeder Pigs

Tuesday, May 25
 Today 3099
 Two Weeks Ago 2478
 TREND: Compared to two weeks ago feeder pigs 10.00-20.00 lower, extremes on US 2-3 30.00 lower. All prices on a per hundred weight basis.
 US 1-2 43-48 lb. 103.00-105.50; 55-60 lb. 90.00-95.50; 70-95 lb. 71.00-88.00.
 US 2 40-60 lb. 90.00-103.00.
 US 2-3 One lot 22 lb. 142.00; 33 Head 25-26 lb. 122.50-123.00; 30-36 lb. 95.00-111.00; 40-60 lb. 78.00-100.00.
 US 3 One lot 26 lb. 109.00; 42-56 lb. 72.00-90.00.

FOR SALE
 DRY WOOD
 SHAVINGS
 AND
 SAW DUST

PH: 717-859-1595
 717-872-5656

Vintage

Wed., May 26, 1976

HOGS 593 No. 1 195-235 lbs. 52-52.60, No. 2 200-240 lbs. 51.10-51.85, No. 3 200-240 lbs. 50.35-51, Heavy Hogs 260-280 lbs. 42-48.75, Light Hogs 175-185 lbs. 48.75-49.25, Sows 39.50-42.50, Boars 215-325 lbs. 38.75-44.50.

St. Louis

Thursday, May 27
 HOGS: 5000.
 Barrows and gilts active, steady to 25, instances 50 higher.
 US 1-2 200-240 lb. 51.00-51.25; 40 head 51.50; US 1-3 200-250 lb. 50.50-51.00; US 2-3 230-250 lb. 50.00-50.75.

Peoria Auction

Thursday, May 27
 HOGS: 3500.
 Barrows & gilts moderately active, opening steady.
 US 1-2 200-230 lb. 50.50-51.00; 165 head 51.25; US 1-3 200-240 lb. 50.00-50.50.

Harrisonburg, VA.

Special Slaughter Cattle Sale
 May 20, 1976
 HARRISONBURG, Va. - There were 210 head sold. All steers and heifers were graded by Representatives of the VDAC's Division of Markets, Livestock Section on USDA standards and sold by the hundredweight.
 STEERS: Prime 1178-1228 lbs. 39.40-40.40, 930-1215 lbs. 37.50-39.50, Singles 1000-1365 lbs. 38.50-40.25, Choice & Prime 1030-1087 lbs. 38.50-40.10, Good 980-1274 lbs 37.50-38.85.
 HEIFERS: Choice 817-989 lbs. 35.50-38.30.



Dublin, VA.

Special Tol-O-Auction Slaughter Cattle Sale
 DUBLIN, Va. - There were 154 head sold. All cattle were sold on USDA carcass grade and weight basis f.o.b. feed lot and sold by the hundredweight.
 Choice steers weighing 900-1250 lbs. brought 64.70-65.70. Good grade 63.70-64.70. Choice heifers sold for 63.70. Good grade 62.70. Holstein cows utility and cutter grade averaging 1350 lbs. brought 60.90. Beef cows utility and cutter grade averaging 975 lbs. sold for 56.70-58.90.

Dewart Auction

Dewart, Pennsylvania
 May 24, 1976
 CATTLE 204. Compared with last Monday's market, slaughter steers grading Good & Choice steady to 50 cents higher. Slaughter cows 25 cents to \$1 lower. Choice No. 2-3 1100-1300 lbs. slaughter steers 39.10-41.85, Good 36.75-39.00, few Standard 35.00-37.25. Few Good slaughter heifers 34.75-36.00, few Standard 33.75-34.75, few Utility 32.75-34.00. Utility & High Dressing Cutter slaughter cows 31.60-33.60, Cutters 28.85-31.25, Canners 25.25-29.25, Shells down to 21.00. Good slaughter bullocks 37.85-42.25, few Utility 31.50-34.50. Few Good & Choice 350-550 lbs. feeder heifers 28.75-32.25.
 CALVES 211. Vealers grading Choice steady; Utility to Good steady to \$4 lower. Few Prime vealers 74.00-75.50, Choice 60.00-70.50, Good 55.00-60.00, Standard 52.00-57.00, Utility 90-110 lbs. 46.00-52.50; 80-85 lbs. 45.00-47.00.
 HOGS 216. Barrows & Gilts \$1 to \$1.50 higher. US No. 1-3 200-230 lbs. barrows & gilts 52.50-53.50, No. 1-3 210-235 lbs. 51.80-52.30, No. 2-3 240-260 lbs. 50.30-51.40. US No. 1-3 300-550 lbs. sows 41.00-46.00, few No. 2-3 500-600 lbs. 38.00-40.80. Few Boars 25.00-42.75.
 FEEDER PIGS 100. US No. 1-3 25-45 lbs. feeder pigs 34.50-46.00 per head, one lot 50 lbs. (No. 1-3) 48.00 per head.
 SHEEP 39. Good & Choice 75-95 lbs. spring slaughter lambs 51.50-57.50. Slaughter ewes 15.00-20.50.

EVERY FRIDAY
FEEDER CATTLE
 12 NOON
 Lancaster
 Stockyards, Inc.

Futures Trading

(Closing bids as of Thursday, May 27)

| | Chicago Cattle | Chicago Hogs | New York Maine Potatoes | New York Fresh Eggs |
|-----------|----------------|--------------|-------------------------|---------------------|
| June | 45.00 | 51.05 | | 47.50 |
| July | | 50.45 | | 49.50 |
| August | 46.80 | 46.50 | | |
| September | | | | 53.20 |
| October | 46.05 | 43.15 | | |
| Nov. | | | 5.32 | 53.25 |
| Dec. | 46.15 | 42.55 | | 58.10 |
| Jan. '77 | | | | |

Trend — Cattle are Lower, Hogs are Mixed, Potatoes are Stronger, and Eggs are Higher.

Markets Provided by Commodity Department
 Reynolds Securities, Inc.

CHICAGO GRAIN FUTURES

(Closing bids as of Thursday, May 27)

| | Corn | Wheat | Soybeans | Soybean Meal |
|-----------|----------|----------|----------|--------------|
| June | | | | |
| July | 2.93 3/4 | 2.57 3/4 | 5.76 | 172.30 |
| August | | | 5.78 1/2 | 171.80 |
| September | 2.82 3/4 | 3.55 | | 172.30 |
| October | | | | 171.50 |
| Nov. | | | 5.91 1/2 | |
| Dec. | 2.74 3/4 | 3.76 3/4 | | 171.30 |
| Jan. '77 | | | 5.93 3/4 | |
| Feb. '77 | | | | |

Trend — Corn is Stronger, Wheat is Stronger, Soybeans are Mixed, and Soybean Meal is Lower.

Markets Provided by Commodity Department
 Reynolds Securities, Inc.

U. S. Inspected Livestock Slaughter

Estimated Dairy Livestock Slaughter Under Federal Inspection

| | CATTLE | HOGS | SHEEP |
|-----------------------|---------|-----------|--------|
| Week to date | 584,000 | 1,017,000 | 85,000 |
| Same period last week | 584,000 | 926,000 | 83,000 |
| Same period last year | 417,000 | 810,000 | 92,000 |

Know Where the Activities Will Be?
 Read the Farm Women Calendar.

J. M. HOOBER INC.

For Over 80 Years
 A Company You Can Trust
 & Have Faith In

Now is the time to send your slaughter cows & bulls. Prices are up for beef cows & bulls. Consult with us on some fine replacements for your herd.

TELL YOUR TRUCKER
 Consign to J. M. Hooper Inc.
 Your Steers, Calves & Hogs;
 We Stand For Sound Livestock Business.

NEXT FEEDER PIG SALE JUNE 8, 1976

You can save yourself 25c per head by tagging at home. We supply free State tags at our office.

PLEASE CALL US SOON
 Phone (717) 397-6191,
 569-2084, 626-5659.

Member Lancaster Stockyard Exchange.



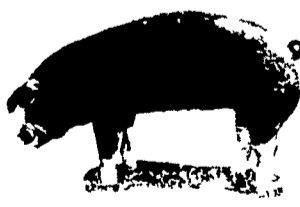
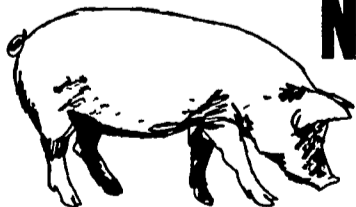
National Reputation - Local Service

STUART HARNISH
 Pottstown, PA
 (215) 469-6396

JOHN CAMPBELL
 Atglen, PA
 (215) 593-5529

GARY MCGEE
 Spring Run, PA
 (717) 349-2340

NEXT FEEDER PIG SALE TUESDAY, JUNE 8 1 P.M.



Consign all your feeder pigs to Walter M. Dunlap & Sons where they will be handled by a capable and experienced staff.

WALTER M. DUNLAP & SONS LANCASTER STOCK YARDS

Consignors can get state tags at our office, thereby saving 25c marketing expense.

For Further Information, Call 717-397-5136