

# Baler twine prices drop

[Continued from Page 1] twine but this year it is about half that amount and the farmers will be feeling better about that price."

"People just learned to get along with less twine last season," noted Max Smith, Lancaster County Agent.

"The manufacturers just priced themselves out of the market last year and farmers found that with the bigger bales they could do without buying excess twine."

"The manufacturers tried to hold back supplies for the almighty dollar and the supply finally surpassed the demand," Smith added.

Although prices are ranging from \$8.05 for a 500 foot package of binder twine to \$13.25 for 9000 feet of plastic twine, the average costs for twine will be much lower for at least the beginning of the season.

Most of the area stores

reported that the twine will be in adequate to good supply with only the Lancaster Agway outlet reporting that their shipment had not yet arrived. Retail salesmen however are asking haymakers to predict their needs before the season gets into full swing so that stores will be adequately stocked with the twine necessary to accommodate all area farmers.

Although no area stores were quoting the price variance on baler tires and spare parts, all the outlets reported that an adequate supply of the equipment is ordered and ready for the haymaking season.

While new tires will not be difficult to find, buying used baler tires will no doubt be a scavenger hunt. Few farm equipment stores noted an abundant supply of used tires and encouraged farmers to check carefully their

needs before the season begins. In buying used tires, farmers should check carefully the size and number to insure the correct fit.

As for equipment and supplies, the future of this season's haymaking seems to have a rosy glow but while prices are decreasing or at least planing off, the individual planning at home can be the most profitable when looking toward supplies. Farmers should be planning ahead for the needs in terms of equipment and supplies. A check of tire conditions will expedite haymaking instead of having a breakdown in the field. If a tire looks "slumpy" on Thursday don't wait until Saturday evening to search for replacements as it usually only causes more irritation and loss of time. Try to approximate the amount of twine you will

need and either buy the supply now or tell your local dealers the quantities you will be needing. In this way he can order more supplies in time for the bulk of haymaking without running short.

Salesmen have also noted the importance of knowing exactly what part you require when calling in an order. The size, model and serial numbers make their jobs easier and insure that the correct piece will be returning to you in good time.

A mutual planning system on both sides (farmers and retailers) can greatly aid in making sure that adequate quantities of haymaking supplies are available all summer. Cooperation and planning on the farm are the keywords to making the season flow smoothly without costly delays.

**TRY A CLASSIFIED**



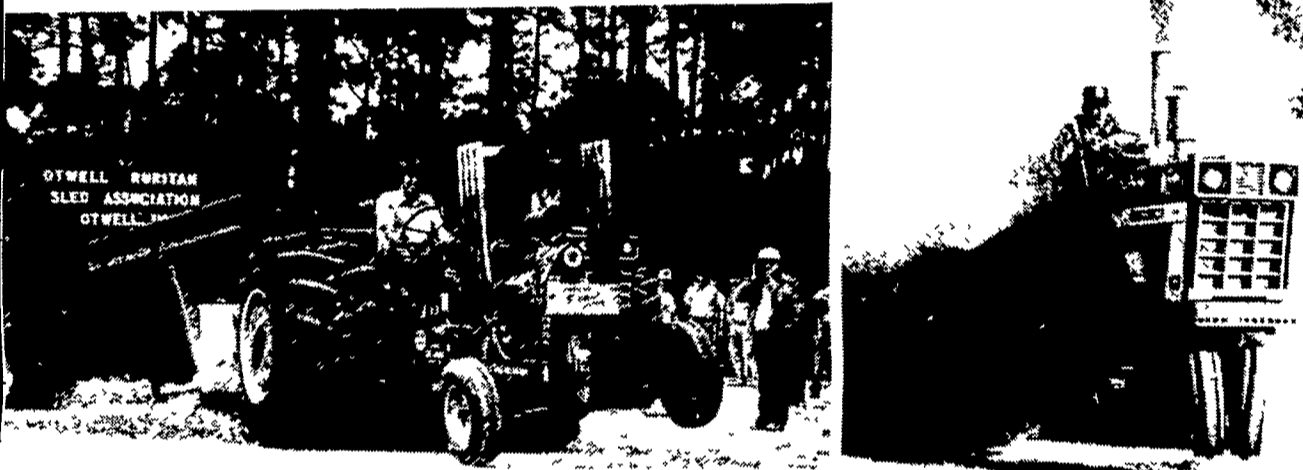
**AT**

- |  |   |
|--|---|
| <p><b>BERKS CO.</b><br/>N. H. FLICKER &amp; SONS INC.<br/>Maxatawny<br/>Ph 215-683-7252</p> <p>STANLEY A. KLOPP INC.<br/>Bernville<br/>Ph. 215-488-1500</p> <p>MILLER EQUIPMENT<br/>Bechtelsville<br/>Ph. 215-845-2911</p> <p>SHARTLESVILLE FARM EQUIPMENT<br/>Shartlesville, PA<br/>215-488-1326<br/>H. Daniel Wenger, Prop.</p> <p>ZIMMERMAN'S FARM SERVICE<br/>Bethel<br/>Ph. 717-933-4114</p> <p><b>BRADFORD CO.</b><br/>WYNNE'S GARAGE<br/>Canton, PA<br/>717-673-8456</p> <p><b>BUCKS CO.</b><br/>KELLER FARM MACHINERY, INC.<br/>116 Richlandtown Pike<br/>Quakertown, PA<br/>215-536-4046</p> <p>PAUL HISTAND CO., INC.<br/>397 North Main Street<br/>Doylestown, PA<br/>215-348-9041</p> <p><b>CHESTER CO.</b><br/>CHAS. J. MCCOMSEY &amp; SONS<br/>Hickory Hill PA<br/>215-932-2615</p> <p>STOLTZFUS FARM SERVICE<br/>Cochranville, PA<br/>215-593-5280</p> <p>M. S. YEARSLEY &amp; SONS<br/>West Chester<br/>215-696-2990</p> <p><b>COLUMBIA CO.</b><br/>ORANGEVILLE FARM EQUIPMENT<br/>Orangeville, PA<br/>Phone 717-683-5311</p> <p>WILLIAM F. WELLIVER<br/>Jerseytown Pa<br/>717-437-2430</p> <p><b>DAUPHIN CO.</b><br/>SWEIGARD BROS.<br/>RD3, Halifax PA<br/>Ph. 717-896-3414</p> <p><b>HARFORD CO.</b><br/>ROBINSON BROTHERS<br/>Cardiff, Md<br/>Ph. 717-456-5215</p> <p><b>LEBANON CO.</b><br/>A. C. HEISEY FARM EQUIPT. INC.<br/>RD1, Jonestown<br/>Ph. 717-865-4526</p> <p>UMBERGERS MILL<br/>RD4, Lebanon (Fontana)<br/>Ph 717-867-5161</p> | <p><b>LANCASTER CO</b><br/>ROY H. BUCH, INC.<br/>Ephrata, RD2<br/>717-859-2441</p> <p>A. B. C. GROFF, INC.<br/>New Holland<br/>717-354-4191</p> <p>A. L. HERR &amp; BRO.<br/>Quarryville<br/>717-786-3521</p> <p>LANDIS BROS. INC.<br/>Lancaster<br/>717-393-3906</p> <p>LONGENECKER FARM SUPPLY<br/>Rheems<br/>717-367-3590</p> <p>N. G. HERSHEY &amp; SON<br/>Manheim<br/>717-665-2271</p> <p><b>LYCOMING CO.</b><br/>RICE FARM SUPPLY, INC.<br/>Jersey Shore, Pa<br/>717-398-1391</p> <p><b>MONTGOMERY CO.</b><br/>WENTZ FARM SUPPLIES<br/>Route 29<br/>Palm, PA<br/>215-679-7164</p> <p><b>NORTHAMPTON CO.</b><br/>GEORGE V. SEIPLE &amp; SON<br/>Easton, PA<br/>215-258-7146</p> <p><b>NORTHUMBERLAND CO.</b><br/>MECKLEY'S LIMESTONE<br/>PRODUCTS, INC.<br/>Herdon, Pa<br/>717-758-3915</p> <p><b>SCHUYLKILL CO.</b><br/>L. L. ECKROTH FARM EQUIP., INC.<br/>New Ringgold<br/>Ph. 717-943-2367</p> <p>STANLEY'S FARM SERVICE<br/>RD. Klingertown<br/>Ph. 717-648-2088</p> <p><b>SNYDER CO.</b><br/>ROYER'S FARM SERVICE<br/>RD1, Winfield<br/>New Berlin Middleburg Hwy<br/>Phone 717-837-3201</p> <p><b>TIOGA CO.</b><br/>CANYON IMPLEMENT, INC.<br/>Mansfield, Pa<br/>717-724-2731</p> <p><b>WYOMING CO.</b><br/>ACE-JURISTA, INC.<br/>Tunkhannock, PA<br/>Ph. 717-836-2610</p> <p><b>YORK CO.</b><br/>AIRVILLE FARM SERVICE<br/>Airville, PA<br/>717-862-3358</p> <p>ANDERSON BROTHERS<br/>New Park, PA<br/>717-382-4272</p> <p>GEORGE N. GROSS, INC.<br/>RD2 Dover, PA<br/>717-292-1673</p> |
|--|---|

\$2400.00  
Purse

# TRACTOR PULL

FLEMINGTON FAIRGROUNDS Flemington, N.J.



**Friday, June 4 7:30 P.M.**

Flemington Fairgrounds Rt. 31, North of Flemington



## CLASS A PTPA

(Penna. Tractor Pullers Assoc.)

### Sanction Pull

All NTPA & PTPA rules will be enforced. Contestants must be PTPA Competing member.

#### Classes

- 5,000 Super Stock
- 9,000 Super Stock
- 7,000 Modified
- 7,000 Super Stock
- 5,000 Modified
- 9,000 Open Class

#### WRITE: MORE INFORMATION

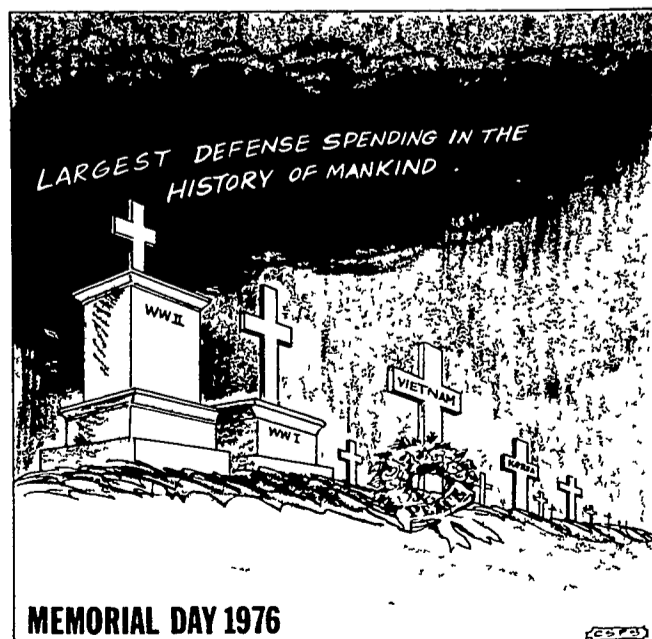
Flemington Fairgrounds  
Rt. 31  
Flemington, N.J. 08822  
201-782-5696  
717-354-8600



\$6000.00 Purse **Coming July 14-15** \$6000.00 Purse

## NTPA National Sanction

Flemington Fairgrounds - Top Tractors in Nation - Don't miss the  
Biggest Pull Ever Held in New Jersey.



MEMORIAL DAY 1976