

Agriculture is largest industry

American farmers vital to world economy

Agriculture is this country's largest industry. Assets, totalling \$531 billion, amount to about 60 per cent of the capital assets of all manufacturing corporations in the United States.

The nation's largest employer, agriculture claims between 14 and 17 million people are engaged in the chain between

growing food and fiber and selling it at the supermarket. There are more than 4 million workers in farming itself, as many as the combined payrolls of transportation, the steel industry and the automobile industry.

One of every eight farm jobs depends on exports. Nearly 500,000 workers produced the farm commodities exported in 1975.

America's farm exports contribute significantly to the country's economy. According to the U.S. Department of Agriculture, every dollar returned to the farm sector from exports creates an additional \$1.33 of output in the rest of the economy - in transportation, financing and warehousing, or in supplying farmers with fertilizer, machinery or other goods.

As an example, the \$21 billion in farm exports in 1974 generated about \$47 billion in income, following the above "multiplier effect". Benefits accrued not only to the farming sector but also to food processing which gained nearly \$8 billion that year from exports; transportation and warehousing, which earned about \$3 billion and the wholesaling and retailing sectors, which recorded gains of about \$3 billion.

Farm exports now represent about 23 per cent of all U.S. farm output, making jobs all the way from field to port of exit.

Currently, about one dollar in every five of gross farm income derives from agricultural exports.

In 1975, agricultural exports took the production of 96 million acres of cropland, up-substantially from 91 million acres in 1972, as export sales climbed to record levels for most commodities.

Today, exports account for about 60 per cent of U.S. wheat production, 50 per cent of the country's soybeans and 25 per cent of American feed grains.

In the period from 1960-1975, the United States exported more agricultural products than in the entire 40-year period immediately preceding: \$92.8 billion versus \$87.4 billion.

Total farm exports in 1976 are expected to top \$22 billion, up from \$21.6 billion in 1975 and almost four times the value of farm exports in 1969.

The fact that the United States is the world's leading supplier of a wide range of farm commodities needed elsewhere gives this nation a powerful hand in foreign affairs.

Food, most of it produced by American farmers, helped the free world recover from the devastation of World War II by feeding hundreds of millions of people, first under the

Marshall Plan and later under Public Law 480 (the Food for Peace law). The result: governments were stabilized and economies were rebuilt.

Since the "Food for Peace" program was established in 1954 by the passage of Public Law 480, the United States has shipped 245 million tons of agricultural commodities valued at \$24 billion throughout the world.

The P.L. 480 program was originally the principal means of disposal for agricultural surpluses. As the United States achieved its early objectives, part of the program was restructured as a concessional sales program to give government loans to friendly, less-developed nations at low interest rates over an extended repayment period.

Many countries, formerly recipients of U.S. food aid have become full-fledged trading partners. Long-term trade with these nations has helped to cement relationships, complementing efforts for a more peaceful world.

American agriculture and its dependability as a supplier of food and feed has played a major role in the easing of tensions in more recent times between the United States and the nations of eastern Europe and Red China. The bulk of trade in recent years between the U.S. and the Soviet Union has been agricultural.

Farm exports have been making a much bigger contribution to the U.S. balance of trade in recent years. Imports of nonagricultural goods have been expanding faster than our exports of such goods, creating deeper and deeper deficits in nonfarm trade. But U.S. farm exports have been increasing much faster than imports, creating a favorable balance in agricultural trade.

The U.S. agricultural trade balance for 1976 is expected to be about \$12 billion, the largest surplus ever. Imports are projected at around \$9.8 billion, up slightly from \$9.6 billion a year ago. In 1975, farm exports of nearly \$22 billion offset a non-agricultural deficit of \$10 billion producing an overall favorable balance of trade of over \$1 billion.

Increased farm exports have brought a sharp reduction in the cost of government farm programs. Case in point: government storage costs for surplus farm commodities have dropped from \$476 million in 1960 to \$69 million in 1973 and, in 1975, to \$17 million. This means lower costs to the taxpayer.

According to Senator Herman E. Talmadge, chairman, U.S. Senate Committee on Agriculture and Forestry, the worldwide demand for U.S. agriculture is greater today than ever before.

"We have in agriculture," he said, "the best of all possible worlds. The American farmer produces enough to feed not only this country's millions, but enough to fill freighters to the brim with wheat and corn, feed grains and soybeans to help nourish untold millions throughout the rest of the world."

Witmers given eighth

Gold Star Breeder Award

PETERBOROUGH, N.H. - The American Guernsey Cattle Club announces that

Raymond F. and Louise A. Witmer - Willow Street, Pennsylvania, have qualified for the 1975 Gold Star Breeder Award. This is the eighth award for this herd.

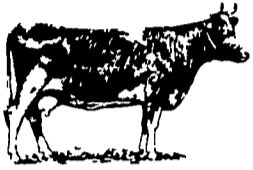
To qualify for the award, it is necessary to meet high requirements and the applicant must be an active member of both a State Guernsey Association and The American Guernsey Cattle Club.

The lactation average of the Witmer herd showed 53 cows with 53 records averaging 13316 pounds of milk and 639 pounds of butterfat, 305-2x M.E., with an average classification for 49 cows of 85.5 points.

Raymond F. and Louise A. Witmer have received a special certificate from The American Guernsey Cattle Club.

READ
LANCASTER
FARMING
FOR FULL
MARKET
REPORTS

FRESH COWS EVERY WEDNESDAY IS SPRINGERS



DAIRY DAY

AT NEW HOLLAND SALES STABLES, INC.
New Holland, PA

If you need 1 cow or a truck load, we have from 100 to 200 cows to sell every week at your price. Mostly fresh and close springing Holsteins.

Cows from local farmers and our regular shippers including Marvin Eshleman, Glenn Fite, Gordon Fritz, Blaine Hoffer, Dale Hostetter, H. D. Matz, and Jerry Miller.

SALE STARTS 12:30 SHARP

Also Every Wednesday, Hay, Straw & Ear Corn Sale 12.00 Noon

All Dairy Cows & Heifers must be eligible for Pennsylvania Health Charts.

For arrangements for special sales or herd dispersals at our barn or on your farm contact

Abram Diffenbach, Mgr.

717-354-4341

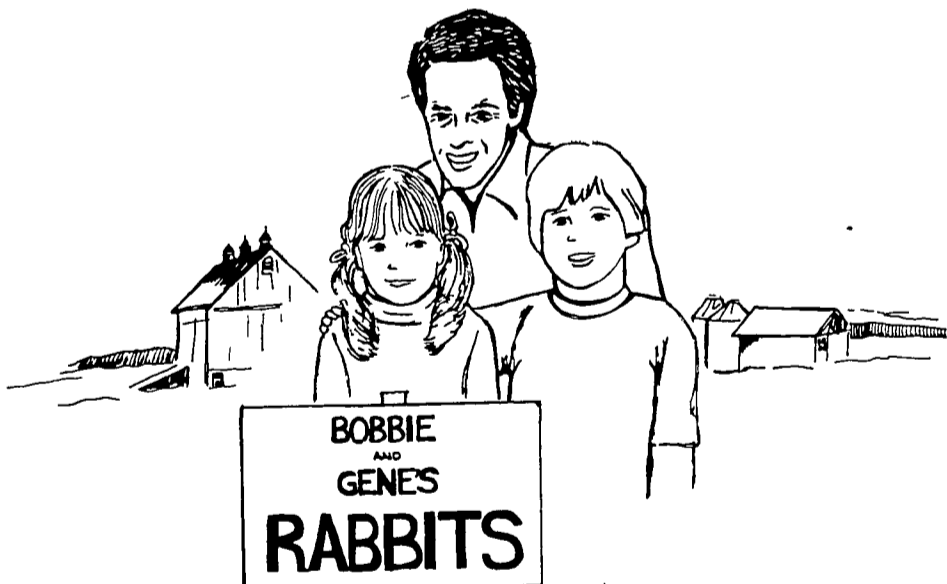
OR

Norman Kolb

717-397-5538

HEIFERS

STOCK BULLS



Raising rabbits can be a family affair!

Begin a new hobby that's inexpensive, educational and fun for the entire family. From pampering your first litter to showing prized stock at the local fair, you'll discover new worlds of personal satisfaction in raising rabbits. You'll learn small-animal management firsthand. Feed, handle, care for your growing herd. Maybe even specialize in Angoras or Chekered Giants.

And now it's easy to set up your own rabbitry with the new Favorite Beginner's Rabbit

Management Kit. You get all the equipment you need: two science-engineered 24" x 30" x 18" high all-metal Lifestyle hutches—designed to install in minimum space, performance-tested accessories like two 9 1/2" Conservall feeders, two 32 ounce ball-valve waterers and a protective nest box for little ones. And to start you off right—a copy of the authoritative new guidebook, *Raising Rabbits the Modern Way* by Bob Bennett. In all over seven items for the special price of just \$55.00.

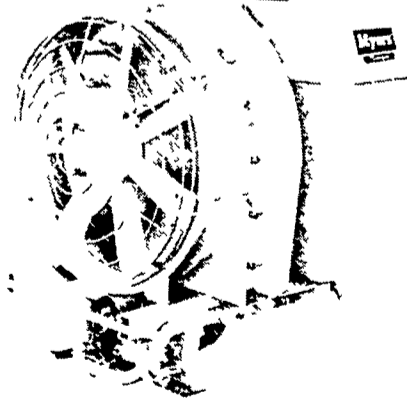
Start your family affair today! Send check or money order for your Beginner's Rabbit Management Kit to Favorite Manufacturing, Inc., RD 1, Box 176, New Holland, PA 17557 (PA residents add 6% sales tax). And if not completely satisfied, simply return the equipment within ten days for full refund of purchase price.

FAVORITE
LIFESTYLE EQUIPMENT

Soybean meal prices are expected to offset much of the change in soybean oil prices, thereby maintaining soybean prices to U.S. producers in the \$4.30 to \$4.85 per bushel range for 1976-77 thru 1979-80.

Myers' A32TMG

ORCHARDS • ROW CROPS
TURF • VINEYARDS
... with Lightweight, Rust Free Molded Tank



- Compact, 3 point Hitch PTO Air Sprayer
- Multi-purpose chemical applicator for Parks, Golf Courses, General Farming, Orchards and Vineyards
- Multi-use Design Cuts Cost in Half
- Big Piston Pump offers Full Range from 20 to 500 P.S.I. and 12 GPM

LESTER A. SINGER
RONKS, PA Phone 687-6712

Lancaster County's Only
Dealer Specializing in
Sprayer Sales & Service