

Farm surveys begin soon

Reflective pet collars reduce night fatalities

Traffic and pets, like oil and water, don't mix well.

In fact they mix so poorly that an estimated 3,000,000 dogs and cats will have fatal meetings with vehicles this year.

Most of those fatal meetings will occur at night—drivers simply can't see the animals until it's too late to avoid them.

But light has been cast upon the problem and indeed light, literally, is the answer; light in the form of highly reflective fabric applied to pet collars. When observed in a vehicle's headlights, these reflectorized collars return the light directly to the source, providing a bright visual warning.

Reflectorized pet collars have the potential to sharply reduce the ugly statistics of animal roadway slaughter. Some pet industry spokesmen think they are making conventional pet collars obsolete. Manufacturers report an ever increasing volume in orders for the protective devices.

Before reflectorized collars were introduced, the only way to keep dogs and cats away from the dangers

of moving vehicles was to keep them confined or restrained. This, of course, is still the best way to protect them.

However, there are occasions, either through owner carelessness, or the natural penchant animals seem to have for getting loose, when they will roam the streets and highways at night. If they wear reflectorized collars, the odds in favor of them getting home safely are much higher.

While most people think in terms of dogs when collars are mentioned, the value of reflectorized collars for cats should not be ignored. Indeed, because it is the nature of cats to roam at night and people are prone to let them out then, cat owners should give reflectorized collars serious consideration.

The person who walks his dog at night hasn't been forgotten either. Reflectorized leashes to go with the collars are now available. The combination of the two makes both dog and owner readily visible to motorists as they cross dark streets.

Reflectorization isn't just a recent discovery. It's been seen on highway and commercial signs for years.

More recently it's been widely evident on clothing, bicycle tires and other objects. The use of reflective trim for increasing nighttime visibility has been recommended by the U.S. Public Health Service, the AAA, the National Highway Traffic Safety Administration and the National Safety Council.

Now Humane Societies and Societies for the Prevention of Cruelty to Animals have added the prestige of their endorsements to the use of reflectorized pet collars. Typical of this support is that from the Massachusetts Society for the Prevention of Cruelty to Animals. It says:

"Dog and cat owners should make every effort to keep animals off roadways—that is, on a leash, fenced, or tied in their yards. But for the unfortunate pet that wanders onto the highway at night, the increased visibility provided by a reflectorized collar might well save its life."

ANNAPOLIS - Estimates of 1976 planted acreages and livestock numbers will be developed from a major nationwide survey to be launched in late May and early June by the U.S. Department of Agriculture.

The program will be directed in Maryland by the Maryland Crop Reporting Service, a USDA agency cooperating with the Maryland Department of Agriculture.

In Maryland some 1,500 farmers and farm operators are scheduled for interviews by a team of 28 men and women who will visit on the farm to gather the information.

"The goal of the survey," Y.D. Hance, secretary of Maryland Department of Agriculture, said, "is to provide farmers with current reliable and impartial information to assist them with production and marketing plans. Present farm prices and production costs, the economy, and export situation have created more than the usual number of uncertainties in agriculture," Hance pointed out. "Producers are especially vulnerable at times like these without the market stabilizing influence provided by official crop and livestock estimates. Rumors

and trade guesses can upset delicate marketing situations," Hance said.

The survey, using a representative sample of agriculture, will include personal interviews with some 70,000 producers, and several thousand livestock operators, and mail responses from thousands of other farmers.

The survey will be the basis for a report to be issued by USDA June 30, estimating spring planted

acreages and acreages for harvest for major crops both nationally and by states.

This information will serve as the foundation for a series of yield and production estimates starting July 12 and available monthly during the growing season. The mid-year number of hogs and pigs in the country will be published in late June and for cattle a month later to provide indications of marketings in the second half of 1976 and early 1977.

Youth Grangers conduct program

A recent meeting of the Fulton Grange was conducted by the youth members of the group. Acting as (main) officers were Clifford Holloway, III - master; David Marks - overseer; James Huber - steward; Peggy Galbreath - lecturer;

David Wissler - chaplain; Edith Ambler - secretary and Clifford Holloway as treasurer.

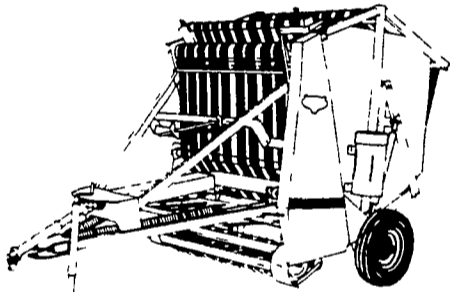
Several skits and songs were led by the youths. Members also modeled their sewing contest entries.

- FURADAN for Alfalfa Weevils
- CHLORDANE for Cut Worms
- TILLAM for Weeds in Tobacco

JONAS S. EBERSOL

1 1/2 miles North of Bird In Hand on Stumplown Road

VERMEER "HAY DAY" DEMONSTRATION



504C and 605D

THURSDAY, MAY 27th

2:00 and 7:00 P.M.

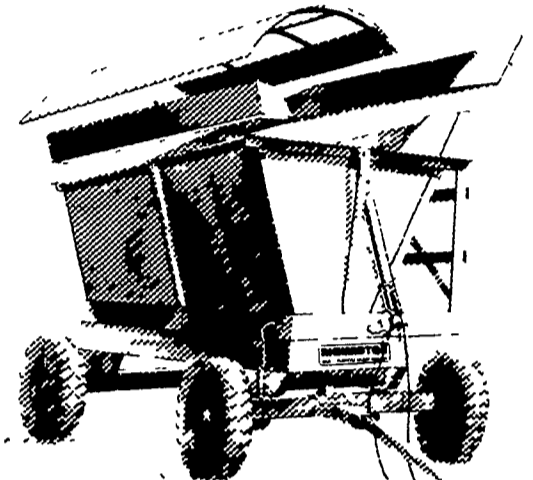
Rain Date - Friday, May 28th

PLACE: **TRIPLE H FARMS**
CLIFFORD HOLLOWAY
PEACH BOTTOM, PA.

1 mile south of Wakefield along Route 222. 3 miles North of Md. State line.
PHONE: 717-548-2640

RICHARDTON

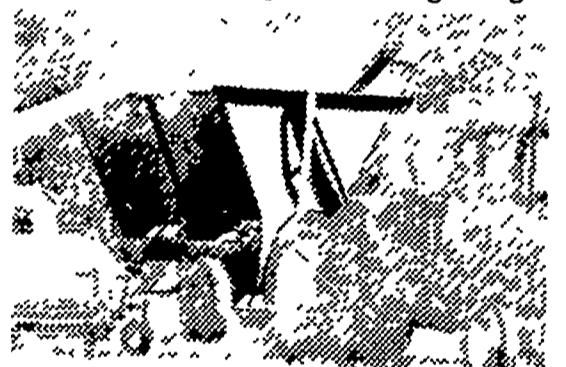
MORE USES THAN EVER.



- Saves time, labor, forage boxes and trucks



- new lower auger loading height



- 12 ft. & 14 ft. sizes



Easily Converts For Use As A
Forage Wagon
Grain Box
Ear Corn Box
Beet Wagon
Chaff Saver

See The Big Orange One At:

- | | |
|---|--|
| Buck & Montgomery Co.
I.G.'s Ag Sales
Silverdale, PA | Franklin Co.
Clugston Implement
Chambersburg, PA |
| Lancaster Co.
Grumelli Farm &
Industrial Equipment
Quarryville, PA | York Co.
Straley Farm Supply
Dover, PA |
| Berks & Lebanon Co.
Zimmerman Farm Service
Bethel, PA | |

For Additional Information
Suncook Valley Equipment Company, Inc.
P. O. Box 220
Suncook, NH 03275
(603) 485-5355
Dealer Inquiry Invited

NOW... TWO NEW REASONS TO FINANCE YOUR CAR WITH The Friendly First

1. NEW RATES 2. NEW TERMS
MAY and JUNE ONLY



FIRST NATIONAL BANK OF STRASBURG

STRASBURG 687-8611 LANCASTER 397-4732 WILLOW STREET 464-3421 BUCK 284-4175 MILLERSVILLE 872-4686

MEMBER F D I C