



James Hess, Plain and Fancy Production Manager, reviews the weekly egg laying records with Ed and Marilyn Moshier in their temperature and humidity controlled holding room at their Litzitz egg farm.



Reed Kellner, General Manager of Plain and Fancy AG Ent., Tamaqua Division, and Maurice Cunfer, Assistant Manager, reviewing feed price sheet.



Edith Hess, Assistant Office Manager, and Richard Neidermyer, Controller, discuss weekly egg and butter inventory and accounts payable records.



Jay Habecker, Plain and Fancy AG General Manager, reviews flock production and feed conversion records with Bill and Betty Swingle.

Paul Hess, Sr., Plain and Fancy President, and his secretary, Doris Stoner, plan the many future diversified involvements for increased commercial egg production expansion.

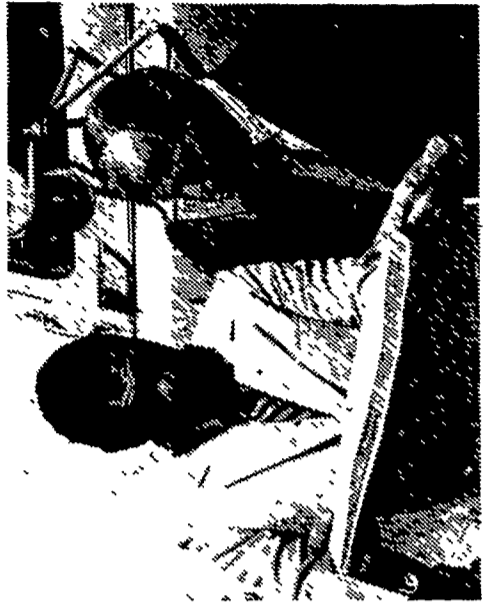


Plain and Fancy takes pride in their Management Training Program. Bruce Long and Robin Hess are two new members of the growing management team.

Regis Puhl, Marketing Manager; Paul Hess, Jr., Marketing Director; and Jim Westwood, Pennsylvania Sales Representative; are members of the Plain and Fancy sales team who regularly deal with institutions, restaurants, and retail outlets.



Walter Zimmerman, Route Foreman, and Richard Gordon, Senior Driver, review some of the truck routes used to supply the seven state area of Pennsylvania, Maryland, New Jersey, Delaware, Virginia, West Virginia, and New York with fresh Plain and Fancy eggs.



Leon Martin, Operations Manager; Robert Gebhart, Processing Manager; and Donald High, plant Superintendent, review Plant production and egg packing schedules.



Paul Hess, Jr., Plain and Fancy Egg Ranch Secretary, and Rose Marie Geib, Sales Clerk, review daily retail orders.

