

What's New

Alarm System
 Revere Chemical Corporation recently introduced "Burg-Alarm," a unique security system designed to protect a tear drop shape area up to 300 square feet with silent and harmless, high-frequency sound waves. When an intruder's motion

is detected by the unit, a 90 decibel alarm horn is triggered. It sounds for a full minute even after all motion has ceased. The "Burg-Alarm" system shuts off automatically and resets itself. It features a 15 second delay which permits you to

leave the area without sounding the alarm.

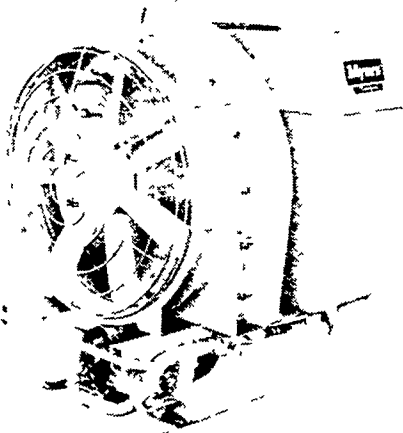
A lamp or radio can be plugged into the unit as a pre-alarm device. It activates seconds before the alarm goes off.

This burglary prevention system is compact, portable and housed in a distinctive walnut cabinet measuring 6 1/4 inches x 5 1/4 inches x 3 inches. Weighs just three pounds. Plugs into any 110 volt outlet. Instructions explaining how to adjust unit, determine proper location and test for effectiveness are included with the system.



A room complete with antique dolls and toys occupies one area of the Plantation House.

Myers' A32TMG
ORCHARDS • ROW CROPS
TURF • VINEYARDS
 ... with Lightweight, Rust Free Molded Tank



- Compact, 3 point Hitch PTO Air Sprayer
- Multi-purpose chemical applicator for Parks, Golf Courses, General Farming, Orchards and Vineyards
- Multi-use Design Cuts Cost in Half
- Big Piston Pump offers Full Range from 20 to 500 P.S.I. and 12 GPM

LESTER A. SINGER
 RONKS, PA Phone 687-6712

Lancaster County's Only
 Dealer Specializing in
 Sprayer Sales & Service



To remove grease and grime from your hands, mix a few grains of sugar with soap lather

TRY A CLASSIFIED

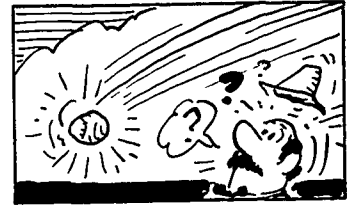
Donegal Mills

[Continued from Page 60]

Donegal Mills Plantation was given to Brown's daughter, Joanne Zink in 1967. Joanne and her husband have been busy remodeling the plantation house and grounds since that time and have added many of their private collection antiques to the historical sight.

Along with viewing the gracious homes and mill, tourists can visit the gift shop, bake house and petting zoo. The Plantation is open six days a week on Tuesday through Saturday 10 a.m. - 4:30 p.m. and on Sundays from 1 p.m. - 5 p.m.

The Plantation is located south of Mt. Joy on Rt. 141 off Musser Road.



Most lifetime homers by a professional baseball player? Not Babe Ruth or Hank Aaron, but Josh Gibson holds the record. He hit 800 lifetime homers playing for the Homestead Greys!

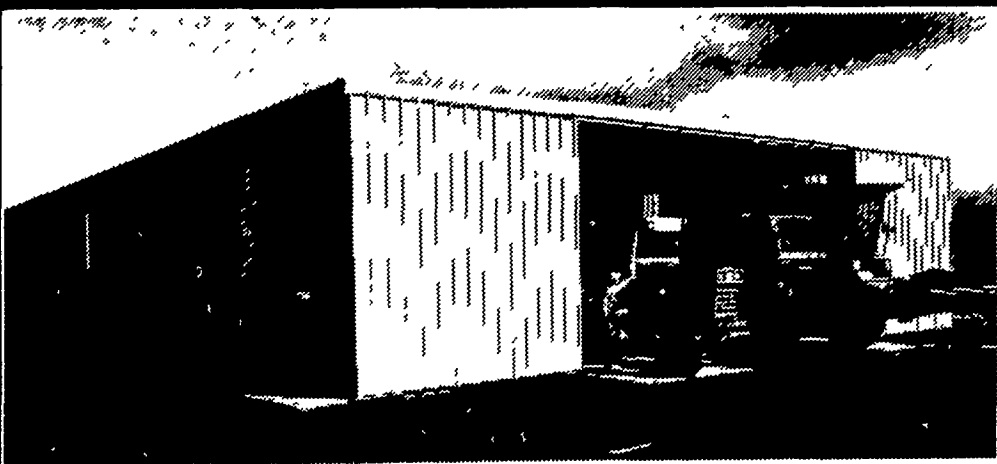
"Hitch your silo blower to a star"

WEAVER STAR SILO INC.

"Honey Pak" "Topper" "Energy Pak"

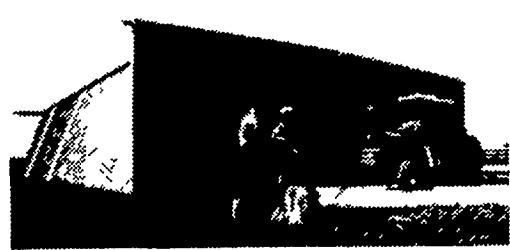
R.D. 4 MYERSTOWN, PA 17067
 CALL COLLECT 717-866-5708

Butler Gives You a Choice!



FARMSTED II—Straight Wall

LOOK,
INTRODUCTORY CASH
BUILDING SALE
OF BUTLER'S NEW
STRAIGHT SIDE BLDG.



FARMSTED I—Slope Wall

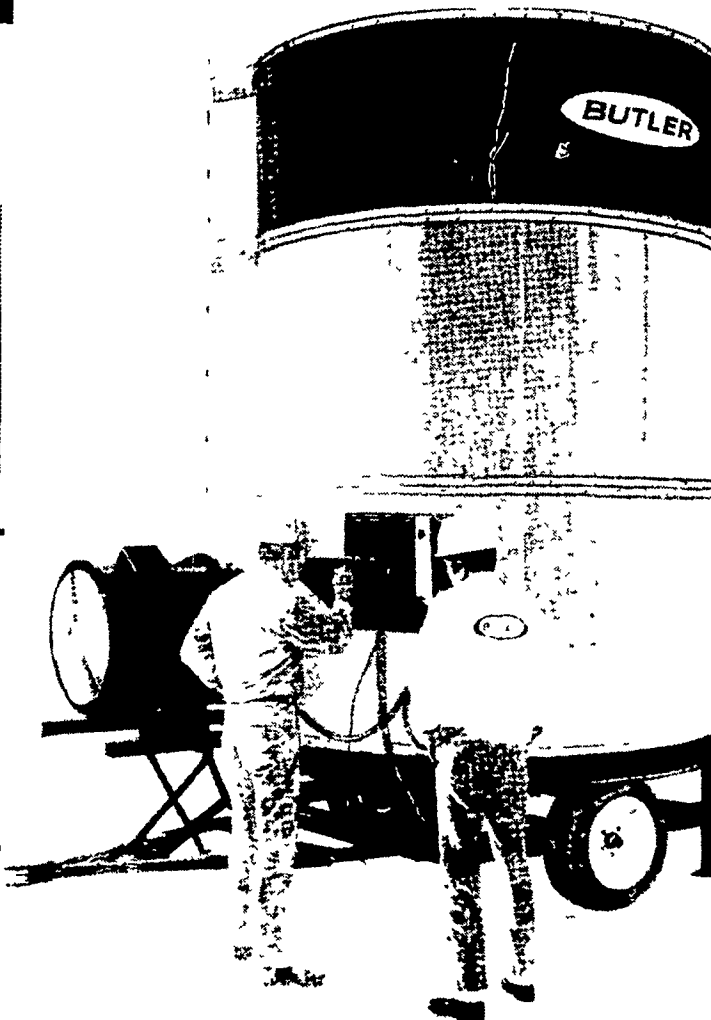
PUT DOORS WHERE YOU WANT THEM.

Order now, take delivery now or later. Limited Time Only Still All Steel 26 gal. metal under \$2.00 sq. ft.

	Sq. Ft.	List Price	Cash Price
60' x 100' x 16' including a Huge 30'W x 15'H door in endwall	6000	\$16,816	CALL
48' x 75' x 16' including a Huge 24' W x 15'H door in endwall	3600	\$10,157	CALL
36' x 75' x 14' including a Huge 18' W x 13'H door in endwall	2700	\$7,563	CALL
24' x 50' x 10' including 2 10 x 10 OH door openings	1200	\$3,200	CALL

Prices Listed Are Galv. Bldgs. F.O.B. Factory
 Accessories & Taxes additional

BUTLER KAN-SUN BATCH DRYER



The Kan Sun Batch Dryer is especially designed for

- the farmer whose daily harvest rate is under 2 100 bushels
- the farmer who is drying grain for the first time and wants to make a minimum dryer investment
- the feeder who raises limited amounts of grain and doesn't want to haul his grain to town for drying and haul it back for feed
- the farmer with separate field and storage locations, the portable Kan Sun Batch Dryer can be moved to the grain and to the storage
- the farmer who owns an in-bin system such as Butler Stor N Dry® and wants to increase his daily drying rate he will use the Kan Sun for drying and the bins as cooling and storage tanks (dryeration)

The Butler Kan Sun Batch Dryer can remove 10 points of moisture from 90 bushels of corn an hour. In a 24 hour drying day the total dried and cooled will be 2 100 bushels. Using dryeration can increase drying capacity to 2 700 bushels.

TWO IN STOCK AT COST



AGRI-BUILDER

FARMILL CONSTRUCTION and REPAIR

Soudersburg, PA

Phone (717) 687-7659