

Hog Markets

Lancaster Market

Monday, May 3

HOGS: Barrows and gilts steady to weak.
BARROWS AND GILTS:
 US 1-2 200-240 lb. 49.10-49.60;
 US 1-3 200-240 lb. 48.50-49.25;
 US 2-3 240-260 lb. 47.50-48.50;
 US 1-3 185-195 lb. 47.50-48.50.

Lancaster Auction

Wednesday, May 5

HOGS: Barrows and gilts 1.00-2.00 higher.
BARROWS AND GILTS:
 US 1 200-235 lb. 51.75-52.00;
 US 1-2 200-240 lb. 51.35-51.50;
 US 2-3 200-240 lb. 51.00-51.25,
 240-270 lb. 49.00-50.50; US 1-2
 185-195 lb. 50.00-50.50.

Vintage Auction

Paradise, PA
 Saturday, May 1

HOGS: 691 Head.
 No. 1 195-235 lb. 50.00-50.75;
 No. 2 195-235 lb. 49.50-49.85;
 No. 3 200-240 lb. 49.00-49.35;
 Heavy Hogs 250-290 lb. 45.00-
 46.00; Light Hogs 120-175 lb.
 42.25-44.75; Sows 280-420 lb.
 42.00-43.25; Sows 500-600
 40.00-41.75; Heavy Boars 450-
 650 35.75-38.00; Light Boars
 200-250 42.00-47.50.
 Wednesday, May 5
HOGS: 579 Head.
 No. 1 200-240 lb. 50.85-51.10;
 No. 2 220-240 lb. 50.00-50.75;
 No. 3 245 lb. 48.50-49.50;
 Heavy Hogs 250-300 lb. 45.00-
 47.75; Light Hogs 140-175 lb.
 40.25-41.75; Sows 300-475 lb.
 41.00-42.50; Heavy Boars 450-
 600 39.25-39.50; Light Boars
 200-220 lb. 42.50-44.00.

New Holland

HOGS 1715.
 Retail - 49.50-51.00;
 heavyweight 45.75-48.50;
 lightweight 45.00-48.50;
 wholesale 48.50-49.50.
SOWS: 37.00-41.00.
BOARS: 36.00-41.00.

Indianapolis

HOGS: 1500
 Barrows and gilts very
 active, 50-1.00 higher.
 US 1-2 200-235 lb. 50.50-
 50.75, 70 head 50.75; US 1-3
 200-240 lb. 50.00-50.50; Few
 Uneven Lots 49.75.

Peoria Auction

HOGS: 3000
 Barrows and gilts active,
 opening 50 higher than
 Wednesday's best time.
 US 1-2 200-220 lb. 50.50-
 50.75; 150 head 51.00; US 1-3
 200-230 lb. 50.00-50.50.

St. Louis

HOGS: 4500
 Barrows and gilts active,
 50-1.00 higher with full ad-
 vance noted on weights
 under 240 lb.
 US 1-2 200-235 lb. 50.50-
 50.75; US 1-3 200-250 lb. 50.00-
 50.50.

Lebanon Valley

Fredericksburg, Pa.

May 4, 1976
HOGS 441. US No. 1-2 200-
 240 lbs. barrows & gilts 50.35-
 50.75, No. 1-3 200-250 lbs.
 49.50-50.35, No. 2-3 190-260
 lbs. 47.50-49.50.
FEEDER PIGS 39.

New Holland Horse

Monday, May 3, 1976
 Reported receipts of 344
 horses, mules, and ponies.
 Market stronger than last
 week.
 Local work horses 500-650;
 mules 200-410; better horses
 315-610; driving horses 150-
 460; riding horses 150-275;
 lightweight killers 20-26;
 heavyweight killers 28-30;
 mares 10-40; colts 5-25;
 geldings 10-35; larger ponies
 65-125.

Lancaster Feeder Cattle

Friday April 30,
 Feeder Cattle

Today 667
 Last Friday 1245
TREND: Compared to last
 Friday steers 1.00-2.00 lower,
 some sales 3.00 lower.
 Quality not as attractive as
 last week's graded sale. Bulk
 of receipts Good and Choice
 550-850 lb. steers.

FEEDER STEERS:
 Choice 495-500 lb. 41.00-43.50,
 640-800 lb. 39.25-41.85, 800-
 1060 lb. 39.00-41.00, two lots
 806-853 lb. 41.85-42.00; mixed
 Good and Choice 500-650 lb.
 37.25-41.00, 650-950 lb. 36.25-
 39.50; Good 400-600 lb. 33.00-
 37.00, 600-850 lb. 32.00-35.50,
 690-925 lb. Holsteins 34.25-
 35.25; Standard and Good
 435-650 lb. 25.00-31.50.

FEEDER BULLS: Choice
 325-500 lb. 33.00-36.00, 500-785
 lb. 31.50-36.00; Good 430-600
 lb. 29.00-32.00, 600-750 lb.
 28.75-29.50.

FEEDER HEIFERS: Few
 Choice 660-920 lb. 32.75-34.25;
 Good and Choice 395-550 lb.
 30.00-33.00; Good 500-675 lb.
 26.75-29.50.

Baltimore USDA

May 3, 1976

CATTLE 675. Slaughter
 steers steady to 50 cents
 higher; Heifers fully \$1
 higher; Cows strong to in-
 stances 50 cents higher;
 bulls and few feeder cattle
 steady. Supply 35 percent
 slaughter steers & heifers, 40
 percent cows, 25 percent
 feeders, balance bulls.

STEERS: Couple lots High
 Choice & Prime No. 3-4 1200-
 1295 lbs. 43.75, Choice No. 2-4
 1000-1400 lbs. 40.50-42.85,
 Good & Choice No. 2-4 900-
 1200 lbs. 39.50-40.50, Good
 37.00-39.00, Standard & Low
 Good mostly holsteins No. 2-3
 1030-1200 lbs. 33.85-37.50.

HEIFERS: Choice No. 2-4
 900-1035 lbs. 39.00-40.00, Good
 to Low Choice No. 2-4 860-
 1000 lbs. 34.85-38.00. **COWS:**
 Utility 30.75-34.00, one at
 34.75, Cutters 27.50-31.00, few
 31.35-31.50, Canner & Low
 Cutters 23.00-27.50. **BULLS:**
 Yield Grade No. 1 1050-1740
 lbs. 35.00-39.00, one 975 lbs. at
 34.60. **FEEDER CATTLE:**
 Several lots Choice steers
 780-900 lbs. 40.00, lot 455 lbs.
 at 46.00, package 606 lbs. at
 42.00.

HOGS 900. Barrows & Gilts
 190-250 lbs. 50 cents to \$1
 lower; 250 lbs. up \$1 to \$2.50
 lower. US No. 1-2 190-240 lbs.
 48.00-48.50, No. 2-3 230-250
 lbs. 47.00-48.00, No. 2-4 250-
 280 lbs. 44.50-47.00. Sows
 steady to weak. US No. 1-3
 300-600 lbs. 38.50-39.50, few to
 40.00.

Futures Trading

(Closing bids as of Thursday, May 6)

	Chicago Cattle	Chicago Hogs	New York Maine Potatoes	New York Fresh Eggs
May			9.70	51.00
June	45.65	51.00		49.35
July		50.35		50.50
August	46.20	46.40		
September				52.40
October	45.75	42.85		

Trend - Cattle are Stronger, Hogs are Stronger, Potatoes are Stronger, and Eggs are Lower.

Markets Provided by Commodity Department
 Reynolds Securities, Inc.

CHICAGO GRAIN FUTURES

(Closing bids as of Thursday, May 6)

	Corn	Wheat	Soybeans	Soybean Meal
May	2.75	3.32	4.90	139.90
June				
July	2.76½	3.39¾	4.97¾	141.90
August			5.02	142.80
September	2.70	3.38½	5.05½	143.70
October				144.00

Trend - Corn is Higher, Wheat is Stronger, Soybeans are Stronger, Soybean Meal is Stronger.

Markets Provided by Commodity Department
 Reynolds Securities, Inc.

U. S. Inspected Livestock Slaughter

Estimated Daily Livestock Slaughter
 Under Federal Inspection

	CATTLE	HOGS	SHEEP
Week to Date	523,000	1,018,000	86,000
Same Period Last Week	501,000	1,045,000	85,000
Same Period Last Year	510,000	1,048,000	112,000

READ LANCASTER FARMING FOR FULL MARKET REPORTS

J. M. HOOBER INC.

For Over 80 Years
 A Company You Can Trust
 & Have Faith In

We have experience and capable men to handle all livestock; slaughter cattle, bulls, cows, heifers, feeder cattle, veal calves, hogs, sheep, feeder pigs. We also buy on customer orders.

YOUR ALL AROUND LIVESTOCK COMMISSION FIRM.

J. M. HOOBER, INC.

Tell Your Trucker -

Consign your livestock to J.M. Hooper, Inc.
 Consign all your pigs to J.M. Hooper, Inc.

NEXT FEEDER PIG SALE MAY 11, 1976

You can save yourself 25c per head by tagging at home. We supply free State tags at our office.

PLEASE CALL US SOON
 Phone (717) 397-6191,
 569-2084, 626-5659.

Member Lancaster Stockyard Exchange.



OUR GOAL IS GETTING
 TOP DOLLAR FOR YOU

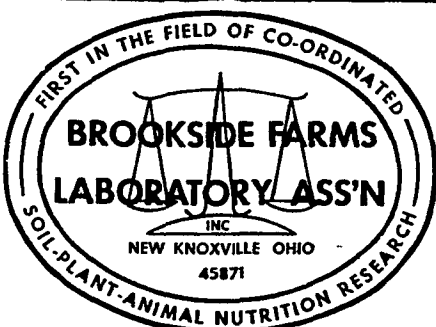
SHIP TO THE
**DANVILLE LIVESTOCK
 MARKET**

Old Rt. 11 Danville, Pa.
 Phone (717) 275-2880

SALE EVERY MONDAY 2 P.M.

Horse Sale 2nd Sat. Every Month 10:30 A.M.

OWNER: **MELVIN M. LEHMAN**
 717-964-3621 Res.
 717-275-2880 Bus.

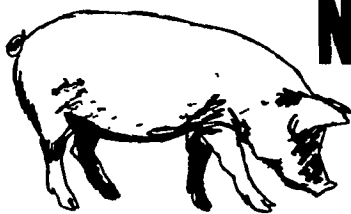


National Reputation - Local Service

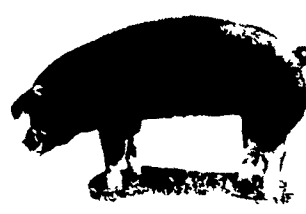
STUART HARNISH
 Pottstown, PA
 (215) 469-6396

JOHN CAMPBELL
 Atglen, PA
 (215) 593-5529

GARY McGEE
 Spring Run, PA
 (717) 349-2340



NEXT FEEDER PIG SALE
TUESDAY, MAY 11
1 P.M.



Consign all your feeder pigs to Walter M. Dunlap & Sons
 where they will be handled by a capable and experienced staff.

WALTER M. DUNLAP & SONS
LANCASTER STOCK YARDS

Consignors can get state tags at our office, thereby saving 25c marketing expense.

For Further Information, Call 717-397-5136