

# Dole sees grain inspection bill as rise in federal bureaucracy



WASHINGTON, D.C. — Senator Bob Dole said Tuesday that Senate sponsors of the grain inspection bill are seeking a political issue — not an answer to the problems in the grain inspection system. The Senate approved the grain inspection bill Monday.

"It should be clear that the sponsors' real intent is to expand the federal bureaucracy and increase federal red-tape in a manner that will not substantially

improve the inspection of grain," said the leading Republican on the Senate Agriculture Committee.

Dole said he has received indications that Senate sponsors of the bill will seek, in the Joint Conference with the House, to trade off federal inspection at the ports and major inland terminals for establishment of a separate inspection agency. "The President will probably veto any legislation that simply increases the

size of the federal bureaucracy for no good reason, and the Senate bill certainly falls into that category. Knowing this, Senate sponsors are simply trying to provoke a political confrontation with the White House—a confrontation that will in no way benefit farmers."

"Farmers have no desire to have the federal government completely take over the inspection system and they see no reason for the creation of a new federal agency. They want an answer to our present grain inspection problems — not to provide a political forum," Dole continued. He said this is indicated by the narrow defeat of his amendments to strike federal inspection at inland terminals and to strike the creation of a separate federal agency. "If the entire Senate had been present and voting," Dole said, "my amendments would have been adopted." Twenty-six Senators were absent, most of whom Dole considered supporters of the amendments.

xxx

Here's a good old-fashioned cooking trick. Mix bread with ground beef or a combination of ground beef and leftover ham to make a tasty meat loaf . . . and help s-t-r-e-t-c-h your meat budget.

xxx

How about a waffle sundae? After making waffles, top them with scoops of ice cream and warm fudge sauce. Garnish each with whipped cream and a maraschino cherry. (Also nuts, if you like.)

## NELSON WEAVER & SON

Box 152-R2

Lititz, PA

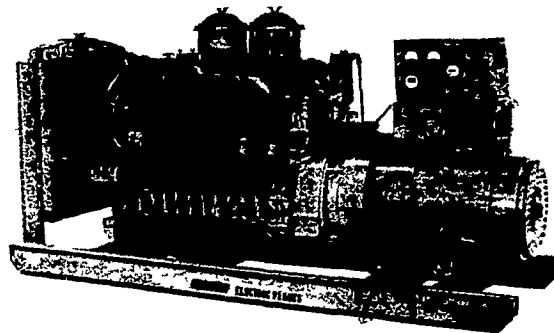
### 49% SOYBEAN MEAL

BULK or BAGGED  
PHONE 717-626-8538

## Electric Generating Systems

Built to Your Specifications  
Manual or Automatic

L. P. Gas — Diesel — Gasoline —



Sales - Service

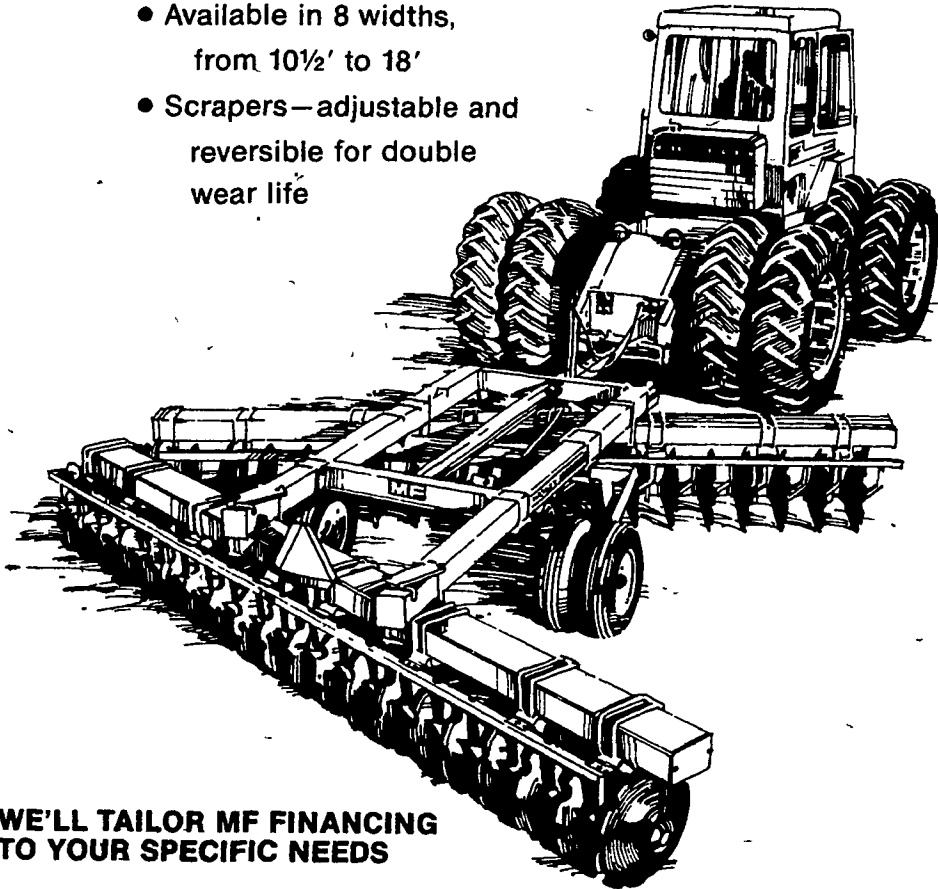
## Martin Electric Plants

Isaac W. Martin, Owner  
Pleasant Valley Rd., RD2  
Ephrata, PA (717) 733-7968

## NEW NEW NEW MF40 OFFSET DISC HARROW

speeds stubble mulching, seedbed preparation.

- Heavy-duty wheeled type, designed for open field work
- Leaves fields smooth and level, without furrows
- Sealed 6" x 10" box-steel gang frames which can be filled for extra weight
- Dual wheels and hubs, 10½" or 9" blade spacings
- Adjustable, self-leveling linkage
- Hydraulic lift raises disc for easy transport
- Available in 8 widths, from 10½' to 18'
- Scrapers—adjustable and reversible for double wear life



WE'LL TAILOR MF FINANCING TO YOUR SPECIFIC NEEDS

# Powerful

## NEW MF 1805 or MF 1505



puts you acres ahead with big tractor muscle.

**NEW** Cat 3208 diesels—150 to 180 drawbar hp range

**NEW** comfort air system in high, roomy, quiet cab

**NEW** fully independent PTO option

**NEW** 3-point hitch versatility

**NEW** productivity results from MF 4-wheel drive traction, 12-speed transmission, maneuverability of articulated steering.

YOU CAN BUY, LEASE OR RENT

A NEW MF TRACTOR



### KELLER BROS.

Ridge Road  
Perkasie, PA  
Ph: 215-257-5698  
or 257-5864

### HEITZMAN

### EQUIPMENT, INC.

Rts 100 & 401  
Glenmoore, PA  
Phone [215] 458-5777  
or [215] 458-8525

### M. M. WEAVER & SONS

North Grofftown Road  
Leola, PA 17540  
Phone: [717] 656-2321

### S. G. LEWIS AND SON

West Grove, PA  
[215] 869-9440  
869-2214

### MARLIN W. SCHREFFLER

Pitman, PA  
[717] 648-1120

### LEBANON VALLEY IMPLEMENT CO.

700 E. Linden St.,  
Richland, PA  
Phone: [717] 866-2544

### N. H. FLICKER & SONS INC.

Maxatawny  
Phone [215] 683-7252

### A. L. HERR & BRO.

312 Park Ave  
Quarryville, PA  
Phone [717] 786-3521

### NISSLEY FARM SERVICE

Charlestown Rd -  
Prospect Rd  
Washington Boro, PA  
Phone [717] 285-4844

### PAUL J. EICHERT & SON

RD1, Orwigsburg, PA  
Ph: [717] 943-2304