

# Public Sales Register

**SAT. MAY 1 - 1:30 p.m.**  
Public Sale of Real Estate.  
Location - off Route 222 at  
Robert Fulton Tea House,  
take Cedar Hill Road 1/2 mile  
to sale. 5 miles south of  
Quarryville. Little Britian  
Township. Terms by Henry  
Erwin, Clair DeLong &  
Elizabeth Bonholtzer. J.  
Everett Kreider & Carl  
Diller, Aucnts.

**SAT. MAY 1 - 11:00 a.m.**  
Public Auction of Household  
& Antiques, Farm  
Machinery, Real Estate.  
Located 5 miles E. of  
Dimock or Springville, on  
the macadam road leading  
to Nicholson. Herbert &  
Irwin Wilkins, owner. M. L.  
Bunnell, Auctioneer.

**SAT. MAY 1 - 10:00 a.m.**  
Auction of Furniture, An-  
tiques & Tools. Items from 3  
different Estates. Located in  
Coudersport, Pa. - Rt. 6 West  
at rear of Jerry Wright  
Truck Stop near Coudersport  
Fireman's Bldg. Auctioneer  
- Si Pepperman, R2,  
Coudersport, Pa.

**SAT. MAY 1 - 8:30 A.M.**  
Public Sale of Personal  
Property Antiques at 731  
Freemont St., Lancaster, by  
John J. Gilles, Executor for  
Harold W. Gilles Estate.  
Chet Long and Dave  
Thomas, Auctioneers.

**SAT. MAY 1 - 9:30 a.m.**  
Public Sale of Farm  
Equipment, Antiques &  
Tools. Located: Between  
Strinestown and Zions View  
on old Route No. 111. Come  
west from Exit 12 off Ex-  
pressway. Terms by Mr. and  
Mrs. Charles E. Fink. Sale  
conducted by: Rentzel's  
Auction Service.

**SAT. MAY 1 - 9:00 a.m.**  
Sharp. Large Outstanding  
Antique Sale of Furniture,  
Lumber, Bric-A-Bric, Brass  
Hardware, Shop Tools,  
Farm Items & Car. Located  
along Rt. No. 94 at North end  
of York Springs in Adams  
Co., Pa. Alice Lory, owner.  
Clair R. Slaybaugh, Auc-  
tioneer.

**SAT. MAY 1 - 9:30 A.M.**  
Annual Tel Hai Benefit Sale  
will be held at the Twin Slope  
Farmers Market,  
Morgantown, Pa. Donations  
of household goods, baked  
goods, hardware, plants,  
quilts, antiques, livestock,  
hay, straw and corn will be  
on sale. Horning, Zook and  
Kurtz, Auctioneers.

**SAT. MAY 1 - 12 Noon.**  
Public Sale of Valuable Real  
Estate. Directions - Go north  
of Annville on Rt. 934 to  
Bellegrove, at North side of  
Bellegrove bear west at the  
Y, go 2 miles & cross Blacks

Bridge, after crossing bridge  
turn right 2nd road which is  
Crooked Lane. See signs.  
Conditions by - Leon & Jo  
Anna Zimmerman. Auc-  
tioneers - Harry W. Fisher &  
Nelson L. Ebersole.

**SAT. MAY 1 - 10:00 a.m.**  
Public Sale of Real Estate,  
Farm Equip., Tools, Auto,  
Antiques & Household  
Goods. Located along  
Camargo Road, R3,  
Quarryville, Providence  
Twp., Lanc. Co., Pa. (Be-  
tween New Providence &  
Quarryville; about 1/4 mi.  
east of Rt. 222; near new  
PP&L service center.) Sale  
by Michael H. Kneisley.  
Howard Shaub, Auctioneer.

**SAT. MAY 1 - 10 A.M.** Public  
Sale of Real Estate, An-  
tiques, and Household Goods  
located at 37 North Main St.  
in the Boro of Jacobus, Pa.  
Next to Smith Village Super  
Market. Real Estate will be  
sold at 2 P.M. Sale by Mrs. S.  
P. Shearer, owner; Robert  
L. Sechrist, Auctioneer.

**SAT. MAY 1 - 12:00 Noon**  
Real Estate at 2 P.M. Public  
Sale of Real Estate,  
Household Goods, Antiques  
and 100 lots of coins located  
at 535 W. Main St. in the  
borough of New Holland.  
Terms by New Holland  
Farmers National Bank,  
executors of the Shelley  
Musser Estate. Robert E.  
Martin and Frank L. Steller,  
Auctioneers.

**MON. EVE. MAY 3 - 6:00**  
p.m. Public Sale of Farm  
Equipment & Antiques.  
Located 1 mile east of  
Maytown, Pa. along Rock  
Point Rd. Sale by Mrs. Carl  
Guthridge. H. (Abe) Shaf-  
ner & C. H. Wolgemuth,  
Auctioneers.

**MON. MAY 3 - 11 a.m.**  
Auction Sale of Restaurant &  
Roadstand related Equip-  
ment, for former "Big Bee  
Broasted Chicken & Seafood  
Take-out Restaurant, Route  
47 (Delsea Drive, Glassboro,  
N.J.) (Sickler & Scott,  
Auctioneers.

**WED. MAY 5 - 7:00 p.m.**  
Special Feeder Sale. Sale by  
Four States', Hagerstown,  
MD

**WED. MAY 5 - 10:00 a.m.**  
Auction of Baking & Food  
Processing Equipment.  
Located at 17th & Chestnut  
Streets, Ashland, Pa. Sale  
ordered By Raudenbush  
Foods, Inc. George N.  
Deibert, Auctioneer.

**WED. MAY 5 - 12:30 p.m.**  
Ayrshire Auction. Carroll  
Fry.

**Decker Spring Sale.**  
Location: Onemile East of  
the traffic light on Rt. 6 in  
Factoryville. Tom Whit-  
taker, Sale Mgr. Merton  
Bunnell, Auctioneer.

**WED., MAY 5 - 9:30 A.M.**  
David Good's Consignment  
Sale. Location - 1/2 mile  
North of Route 23 on North  
Maple Avenue in Leola,  
Lanc. to PA. Watch for Sale  
sign. By David H. Good.  
Auct. - F. Snyder, R. Martin,  
C. Wolgemuth, C. Diller, J.  
Fry.

## BROAD ACRES COMPLETE DISPERSAL

Located just off Rt. 6 one mile east of  
Wellsboro, PA. Watch for auction arrows off Rt.  
6. Having decided to discontinue our farming  
operation we will sell the following on

**SATURDAY, MAY 1, 1976**  
At 12:00 Sharp

### 72 - REGISTERED HOLSTEINS - 72

Herd consists of 42 milking cows, 4 bred hfrs., 8 hfrs.  
running with hill now, 9 open hfrs., 7 started calves & 2  
herd sires. 10 of these cows fresh or close by sale time,  
22 due Aug. thru Dec. balance in all stages of lactation.  
Pregnancy examined, interstate tested, charts day of  
sale. Rolling herd average 12,719M 480-F with a 3.8 test  
on a relatively young herd. (oldest cow 7 yrs. old). Sale  
features this nice daughter of Simpson Farm Tidy  
Gent:

Hillcreek Gent Gold Dora - Projected to make  
17,372M - 763F. Her dam is VG-85 and her next dam is  
VG-88 (E4-MAM) with 189,025M and 7,146F - lifetime.

Also another nice daughter of Don Augur True Type  
Model with one record of 17,106M and projected over  
17,000M again. Her dam with a lifetime of 149,019M  
5,525F and next dam with a record of 21,99M - 756 F.  
This herd is almost totally AI and is currently using the  
G & M program.

Sires represented: Don Augur Mothermartha Pride,  
Don Augur Mothermartha Promis, Don Augur True  
Type Model, Simpson Farm Tidy Gent, Paclamar  
Bootmaker, Citation R Maple, Mowry Ivanhoe Prince,  
Don Augur Carnation Royal Ja. Jo.

### MACHINERY

M.F. 1085 diesel tractor w-cab only 623 hrs. (like  
new); I.H.C. 450 gas tractor w-wide front end; 1969  
Chevy pickup; N.H. 717 chopper w-direct cut & 1 row  
cornhead; N.H. 276 baler w-thrower (real nice); N.H.  
No. 469 haybine; New Idea 1 row corn picker only  
picked 20 acres; Gehl 16 ft. self unloading box w-8 ton  
running gear & flotation tires (new last year); Gehl 14  
ft. self unloading box w-I.H.C. running gear & flotation  
tires; 2 hay wagons w-kicker racks; I.H.C. No. 45 Vibra  
shank 12 1/2 ft. cultivator w-mulcher attachment; Gehl  
hi-throw blower; N.H. 46 ft. elevator w-motor & grain  
discharge; New Idea No. 217 spreader; M.F. No. 880  
semi-mounted 4 bottom 16" plow; I.H.C. No. 535 three  
bottom 16" semi-mounted plows; N.H. side rake; J.D.  
2 row 3 pt. hitch corn planter; New Idea P.T.O. 6 ft.  
snow blower; Yellow-Devil 200 gal. transport weed  
sprayer; New Idea No. 109 three pt. hitch sower; I.H.C.  
2 pt. hitch mower; 3 pt. hitch cultivator; 3 pt. hitch  
weeder; 3 pt. hitch blade; dump trailer; truck cab; hay  
dryer (new last yr.); 1000 bu. metal corn crib; 3 feed  
bunks; 250 gal. L.P.S. tank; I.H.C. ensilage cutter; 40  
ft. endless belt; space heater; rototiller; buzz saw; self  
unloading unit; metal pens & gates; 8 chicken crates; 4  
feed carts; lime cart; 2 wheelbarrows; XR16 semen  
tank (new in Nov.); cow clippers; cords; 11 cow mats;  
milk cans; wire; Lincoln 225 amp. welder; breeding  
wheel and a few other small items.

### PRODUCE - SEED - FERTILIZER

Approx. 2,000 bales hay to be sold in 3 lots; approx.  
15 ft. of treated corn silage in 14 ft. silo; quantity of  
grass silage in trench; quantity of 10-20-20; 10-15-30; 0-  
25-25; and 46-0-0 Urea fertilizer in bags; 6 bu. of 640 R 14  
seed corn; 5 gal. pre murge.

### MILK HOUSE & PASTEURIZING EQUIP.

Fulton series E gas boiler; plate cooler;  
homogenizer; pasteurizer; 2 holding tanks; ice maker;  
4 DeLaval milker units; dump station w-washer, dryer  
& plastic hose; milk house heater; S.S. pails &  
strainers.

### Sales Mgr. Note:

You will find a young herd with good udders carrying  
a 3.8 test. A good line of like new & well cared for  
machinery. Selling order machinery at 12:00 sharp,  
cattle approx. 1:30. Don't miss this high quality sale!  
Catalogs upon request.

Terms: Cash or Good Check  
Sale under cover Lunch available

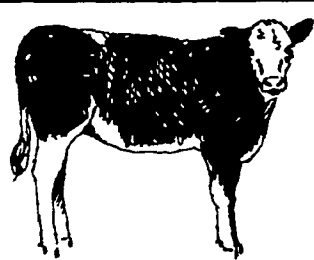
### TIOGA COUNTY FARM

Owners  
Represented by County Commissioners:  
Kermit Moore - Wm. Hall - Oliver R. Bartlett

Auctioneer - Arlow Kiehl  
Sales Manager **GORDON WOOD**

Mansfield, PA  
Phone 717-549-4901

For the most in advertising coverage & preparing  
your sale call Wood's Auction Service.



## 1976 FEEDER CATTLE AND CALF SALES

**SOUTHBRANCH STOCKYARDS, INC.**  
Moorefield, W. Va. — Phone 538-6050  
257-7231

**2nd SALE - FRIDAY, APRIL 30, 7:30 p.m.**

Two Year Olds, Yearlings and Calves.

(All long haired West Virginia cattle)  
Consign Your Cattle to One Sale or Buy a  
Load.

—All Sales Sponsored By—  
**THE SOUTH BRANCH STOCKYARDS &  
THE W. VA. DEPT. OF AGRICULTURE**



## 700 HEIFERS 200 REGISTERED 500 GRADES

**New Holland Sales Stables**

**Annual Heifer Special**

10:00 A.M.

**Saturday, May 22, 1976**

Registered Heifers Will Sell  
At 12 Noon

This sale will feature some of the top A.I. sires  
of the Holstein breed. Many registered heifers  
with full pedigrees. Some early consignments  
having over 20,000 lb dams

Popular sires represented are: Arlinda Chief,  
ivanhoe Star, Astronaut, Round Oak Elevation,  
several Ivanhoe sons, etc.

Don't miss this sale if you need heifers. We will  
have all sizes from calves to freshening age.  
Many are calfhood vaccinated & several with sire  
identification.

Catalogues Day of Sale  
For More Information Contact:

**ABE DIFFENBACH**

717-354-4341 or

**NORMAN KOLB**

717-397-5538

## HAT & GAVEL AUCTION CO.

1 MILE NORTH OF LITITZ  
ON ROUTE 501

**THURSDAY EVENING,**

**APRIL 29, 1976 5:30 P.M.**

**HAND TOOLS, COLLECTABLES,**

**HOUSEHOLD, COINS**

Large lot of an assortment of hand tools,  
glassware, furniture, etc., etc.

WE SPECIALIZE IN PUBLIC AUCTIONS,  
ESTATES AND ANTIQUES.

**WILBUR H. HOSLER**

306 Owl Hill Road, Lititz

**Harold K. Galebach, Partner**

HAT & GAVEL AUCTION CO. SELLS  
ON COMMISSION — CALL 626-0254

Receiving Hours: Monday, Noon to 9 P.M.;  
Wednesday, 9 A.M. to 5 P.M.; Tuesday, Pickup Day.

### SHORT NOTICE

## PUBLIC SALE

**MON., APRIL 26, 1976**

At 12:30 P.M.

Located in York County 1/2 mile south of Route  
462 better known as old U.S. 30. Turn south at  
Broad St. in Hellam, PA. First farm on right.  
Watch for signs.

**DAIRY HERD, BULK MILK TANK,**

**DUMPING STATION, FARM MACHINERY**

29 Holstein Milk cows; 10 registered and the balance  
grades; all stages of lactations, tested within 30 days,  
health charts. 1 dau. of Penn Gate Fond Reflection; 1  
dau. of Paclamar Astronaut; 2 dau. of Kingstead  
Ivanhoe; 1 dau. of Adohr Victor London; 1 dau. of  
Thonyma Royal Prince; 1 dau. of Fultonway Prince  
Joan; other popular sires.

1000 gal. Mueller Hi perform bulk milk tank. 1 1/2 yrs.  
old, like new dumping station, (farm machinery) (2  
Perfection milking units) (milk tank will be sold 2:00  
P.M.) 60 John Deere Tractor, tank manure spreader, 2  
row corn planter, 3 bottom John Deere plow.

**MARC A. LEHMAN**

RD12

Hellam, PA

Preston E. Chronister Auct. 755-4317  
Auctioneer, Clerk

Not responsible for accidents day of sale.  
Terms: Cash or approved check.